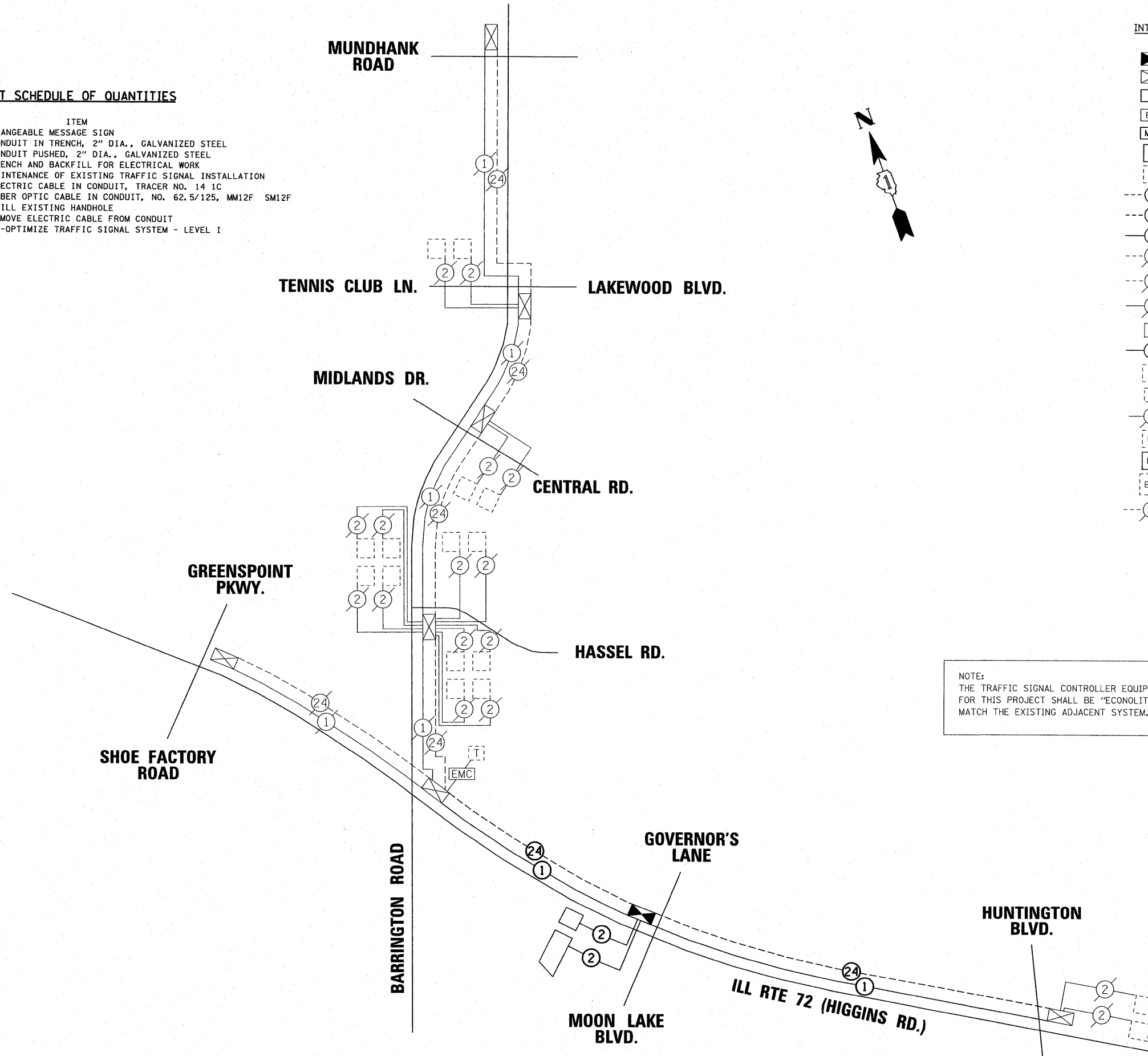


INTERCONNECT SCHEDULE OF QUANTITIES

QUANTITY	UNIT	ITEM
1	CAL MO	CHANGEABLE MESSAGE SIGN
923	FOOT	CONDUIT IN TRENCH, 2" DIA., GALVANIZED STEEL
126	FOOT	CONDUIT PUSHED, 2" DIA., GALVANIZED STEEL
923	FOOT	TRENCH AND BACKFILL FOR ELECTRICAL WORK
2	EACH	MAINTENANCE OF EXISTING TRAFFIC SIGNAL INSTALLATION
7360	FOOT	ELECTRIC CABLE IN CONDUIT, TRACER NO. 14 1C
7360	FOOT	FIBER OPTIC CABLE IN CONDUIT, NO. 62.5/125, MM12F SM12F
2	EACH	DRILL EXISTING HANDHOLE
14720	FOOT	REMOVE ELECTRIC CABLE FROM CONDUIT
1	L SUM	RE-OPTIMIZE TRAFFIC SIGNAL SYSTEM - LEVEL I

INTERCONNECT SCHEMATIC LEGEND

	INTERSECTION CONTROLLER
	EXISTING INTERSECTION CONTROLLER
	MASTER CONTROLLER
	EXISTING MASTER CONTROLLER
	MASTER MASTER CONTROLLER
	PROPOSED INTERSECTION & SAMPLING (SYSTEM) DETECTORS
	EXISTING INTERSECTION & SAMPLING (SYSTEM) DETECTORS
	PROPOSED FIBER OPTIC CABLE- NO.62.5/125 2-MM12F & SM12F
	EXISTING FIBER OPTIC CABLE-NO. 62.5/125 2-MM12F & SM12F
	PROPOSED INTERCONNECT CABLE-NO.18 3 PAIR TWISTED, SHIELDED
	EXISTING INTERCONNECT CABLE-NO.18 3 PAIR TWISTED, SHIELDED
	PROPOSED LOOP DETECTOR CABLE-2/C TWISTED, SHIELDED
	EXISTING LOOP DETECTOR CABLE-2/C TWISTED, SHIELDED
	TELEPHONE CONNECTION
	PROPOSED TRACER CABLE NO. 14 1C
	EXISTING INTERSECTION LOOP DETECTORS AND PROPOSED SAMPLING (SYSTEM) DETECTORS
	EXISTING TELEPHONE CONNECTION
	EXISTING TRACER CABLE 1/C (AS SPECIFIED)
	EXISTING SAMPLING (SYSTEM) DETECTORS
	PROPOSED SAMPLING (SYSTEM) DETECTORS
	EXISTING SAMPLING (SYSTEM) DETECTORS, PROPOSED INTERSECTION AND SAMPLING (SYSTEM) DETECTORS.
	EXISTING INTERCONNECT CABLE-NO. 62.5/125 12F FIBER OPTIC CABLE



NOTE:
THE TRAFFIC SIGNAL CONTROLLER EQUIPMENT FOR THIS PROJECT SHALL BE "ECONOLITE" TO MATCH THE EXISTING ADJACENT SYSTEM.

FILE NAME =	USER NAME = \$USER\$	DESIGNED - NB/TCM	REVISED -
P:\NP-07-1600-5\Design\Design\SH1016.dgn		DRAWN - NB/TCM	REVISED -
		CHECKED - NB/TCM	REVISED -
		DATE - 03/18/2009	REVISED -

**STATE OF ILLINOIS
DEPARTMENT OF TRANSPORTATION**

**INTERCONNECT SCHEMATIC
ILL RTE 72 (HIGGINS RD.) AND BARRINGTON ROAD**

SCALE: N.T.S. SHEET NO. OF SHEETS STA. TO STA.

F.A.RTE.	SECTION	COUNTY	TOTAL SHEETS	SHEET NO.
341	32-2-R-N	COOK	53	31

CONTRACT NO. 60E64
FED. ROAD DIST. NO. ILLINOIS FED. AID PROJECT

APEX
CONSULTING ENGINEERS, LLC
111 E. Wacker Drive Suite 520
Chicago, IL 60601