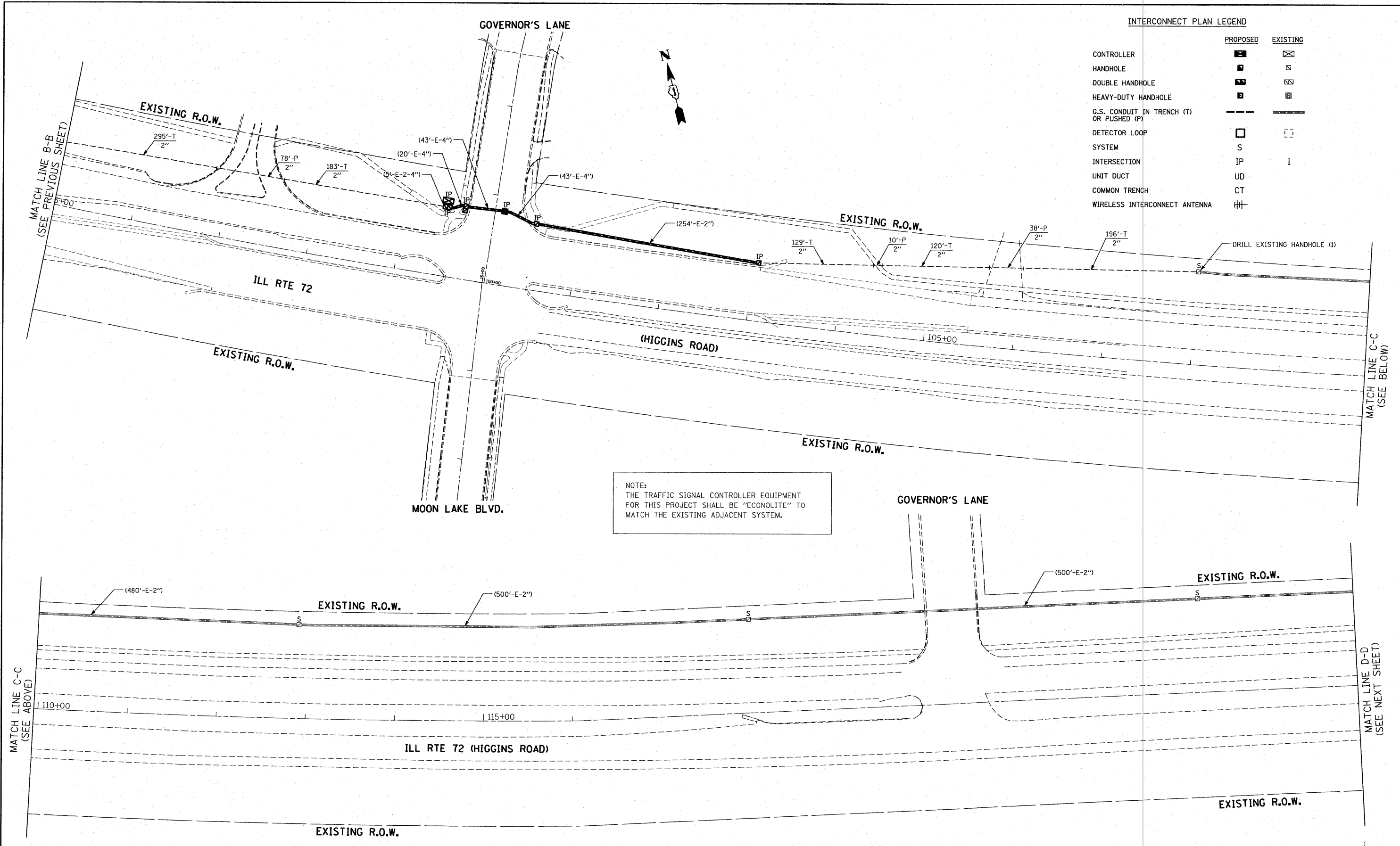


INTERCONNECT PLAN LEGEND

	PROPOSED	EXISTING
CONTROLLER		
HANDHOLE		
DOUBLE HANDHOLE		
HEAVY-DUTY HANDHOLE		
G.S. CONDUIT IN TRENCH (T) OR PUSHED (P)		
DETECTOR LOOP		
SYSTEM	S	I
INTERSECTION	IP	I
UNIT DUCT	UD	
COMMON TRENCH	CT	
WIRELESS INTERCONNECT ANTENNA		



NOTE:
THE TRAFFIC SIGNAL CONTROLLER EQUIPMENT FOR THIS PROJECT SHALL BE "ECONOLITE" TO MATCH THE EXISTING ADJACENT SYSTEM.

FILE NAME =
P:\VP-07-1600-5\Design\Design\SH1014.dgn

USER NAME = \$USER\$	DESIGNED - NB/TCM	REVISED -
PLOT SCALE = 50.0000' / IN.	DRAWN - NB/TCM	REVISED -
PLOT DATE = 3/17/2009	CHECKED - NB/TCM	REVISED -
	DATE - 03/18/2009	REVISED -

**STATE OF ILLINOIS
DEPARTMENT OF TRANSPORTATION**

**INTERCONNECT PLAN (SHEET 2 OF 3)
ILL RTE 72 (HIGGINS RD.)
FROM BARRINGTON ROAD TO HUNTINGTON BLVD.**

SCALE: 1"=50' SHEET NO. OF SHEETS STA. TO STA.

F.A.P. RTE.	SECTION	COUNTY	TOTAL SHEETS	SHEET NO.
341	32-2-R-N	COOK	53	29
FED. ROAD DIST. NO.		ILLINOIS FED. AID PROJECT		

APEX
CONSULTING ENGINEERS, LLC
111 E. Wacker Drive Suite 520
Chicago, IL 60601

CONTRACT NO. 60E64