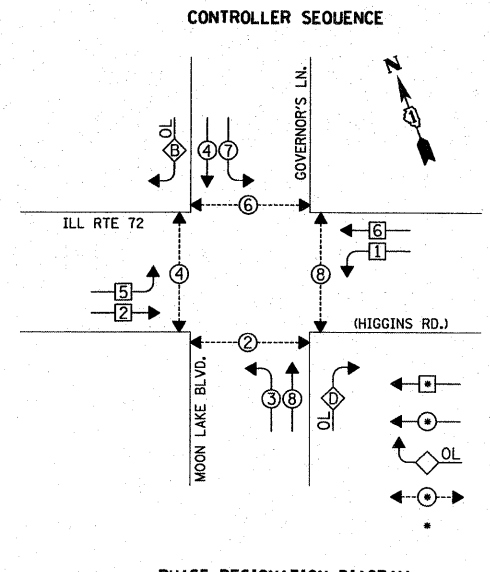


**CABLE PLAN LEGEND**

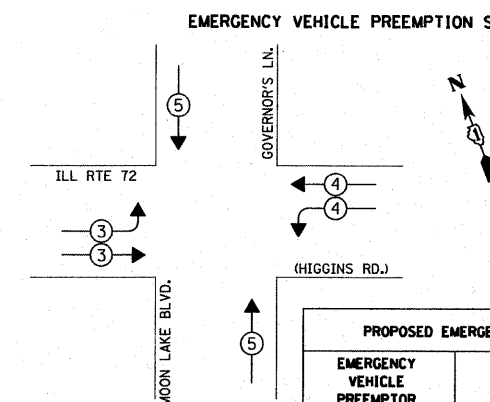
- |                 |                 |   |
|-----------------|-----------------|---|
| <b>PROPOSED</b> | <b>EXISTING</b> |   |
| (G)             | (G)             | 8" (200mm) TRAFFIC SIGNAL SECTION   |
| (R)             | (R)             | 12" (300mm) TRAFFIC SIGNAL SECTION  |
| (W)             | (W)             | 12" (300mm) PEDESTRIAN SIGNAL SECTION   |
| (A)             | (A)             | 12" (300mm) PEDESTRIAN SIGNAL SECTION   |
| (C)             | (C)             | CONTROLLER CABINET SERVICE INSTALLATION   |
| (T)             | (T)             | TELEPHONE CONNECTION  |
| (M)             | (M)             | MAGNETIC DETECTOR   |
| (P)             | (P)             | PUSHBUTTON DETECTOR   |
| (V)             | (V)             | VEHICLE DETECTOR, INDUCTION LOOP  |
| (2)             | (2)             | DENOTES NUMBER OF CONDUCTORS, ALL CABLE NO. 14 EXCEPT AS INDICATED. ALL LOOP DETECTOR CABLE TO BE SHIELDED. |
| (P)             | (P)             | SIGNAL FACE WITH BACKPLATE. "P" INDICATES PROGRAMMED HEAD   |
| (E)             | (E)             | RAILROAD CONTROL CABINET  |
| (E)             | (E)             | ILLUMINATED SIGN, FIBER OPTIC "NO LEFT TURN"  |
| (E)             | (E)             | ILLUMINATE SIGN, FIBER OPTIC "NO RIGHT TURN"  |
| (H/C)           | (H/C)           | GROUND ROD AT HANDHOLE, DOUBLE HANDHOLE, OR CONTROLLER  |
| (P)             | (P)             | GROUND ROD AT POST OR MAST ARM POLE   |
| (S)             | (S)             | GROUND ROD AT ELECTRIC SERVICE INSTALLATION   |
| (1)             | (1)             | GROUND CABLE IN CONDUIT NO. 6 SOLID COPPER (GREEN)  |
| (-24-)          | (-24-)          | FIBER OPTIC CABLE IN CONDUIT NO.62.5/125 2-MM12F & SM12F  |
| (I)             | (I)             | MICROWAVE VEHICLE SENSOR  |
| (V)             | (V)             | VIDEO DETECTOR  |
| (C)             | (C)             | CLOSED CIRCUIT TV   |
| (A)             | (A)             | EMERGENCY VEHICLE LIGHT DETECTOR  |
| (B)             | (B)             | CONFIRMATION BEACON   |
| (B)             | (B)             | UNINTERRUPTIBLE POWER SUPPLY  |
| (C/D)           | (C/D)           | PEDESTRIAN SIGNAL HEAD WITH COUNTDOWN TIMER   |

NOTE:  
THE TRAFFIC SIGNAL CONTROLLER EQUIPMENT FOR THIS PROJECT SHALL BE "ECONOLITE" TO MATCH THE EXISTING ADJACENT SYSTEM.

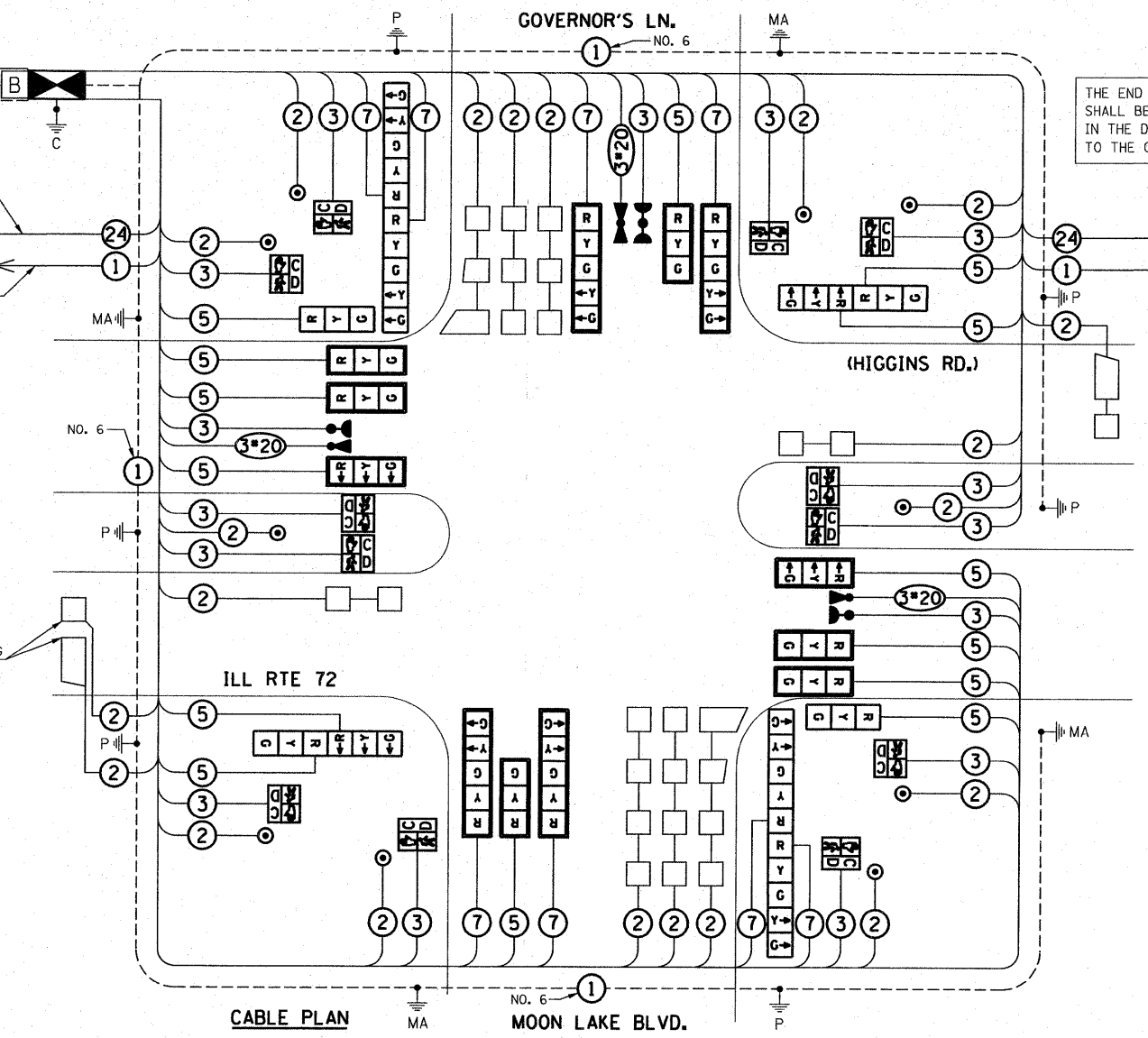


- LEGEND**
- SINGLE ENTRY PHASE
  - DUAL ENTRY PHASE
  - OVERLAP
  - PEDESTRIAN PHASE
  - NUMBER REFERS TO ASSOCIATED PHASE

**PHASE DESIGNATION DIAGRAM**



PROPOSED EMERGENCY VEHICLE PREEMPTOR				
EMERGENCY VEHICLE PREEMPTOR	3	4	5	
MOVEMENT	→	←	↕	



**SCHEDULE OF INTERSECTION QUANTITIES**

QUANTITY	UNIT	ITEM	QUANTITY	UNIT	ITEM
40	SQ FT	PORTLAND CEMENT CONCRETE SIDEWALK 5 INCH	647	FOOT	ELECTRIC CABLE IN CONDUIT, GROUNDING, NO. 6 1C
18	SQ FT	SIGN PANEL - TYPE 1	* 697	FOOT	ELECTRIC CABLE IN CONDUIT, NO. 20 3/C, TWISTED, SHIELDED
50	SQ FT	SIGN PANEL - TYPE 2	2	EACH	TRAFFIC SIGNAL POST, GALVANIZED STEEL 10 FT.
543	FOOT	CONDUIT IN TRENCH, 2" DIA., GALVANIZED STEEL	2	EACH	TRAFFIC SIGNAL POST, GALVANIZED STEEL 14 FT.
168	FOOT	CONDUIT IN TRENCH, 2 1/2" DIA., GALVANIZED STEEL	2	EACH	TRAFFIC SIGNAL POST, GALVANIZED STEEL 16 FT.
30	FOOT	CONDUIT IN TRENCH, 4" DIA., GALVANIZED STEEL	2	EACH	STEEL MAST ARM ASSEMBLY AND POLE, 36 FT.
30	FOOT	CONDUIT IN TRENCH, 5" DIA., GALVANIZED STEEL	1	EACH	STEEL MAST ARM ASSEMBLY AND POLE, 38 FT.
79	FOOT	CONDUIT PUSHED, 2" DIA., GALVANIZED STEEL	1	EACH	STEEL MAST ARM ASSEMBLY AND POLE, 46 FT.
164	FOOT	CONDUIT PUSHED, 4" DIA., GALVANIZED STEEL	24	FOOT	CONCRETE FOUNDATION, TYPE A
131	FOOT	CONDUIT PUSHED, 5" DIA., GALVANIZED STEEL	4	FOOT	CONCRETE FOUNDATION, TYPE C
5	EACH	HANDHOLE	44	FOOT	CONCRETE FOUNDATION, TYPE E 36" DIAMETER
	EACH	HEAVY-DUTY HANDHOLE	8	EACH	SIGNAL HEAD, L.E.D., 1-FACE, 3-SECTION, MAST ARM MOUNTED
4	EACH	DOUBLE HANDHOLE	2	EACH	SIGNAL HEAD, L.E.D., 1-FACE, 3-SECTION, BRACKET MOUNTED
900	FOOT	TRENCH AND BACKFILL FOR ELECTRICAL WORK	4	EACH	SIGNAL HEAD, L.E.D., 1-FACE, 5-SECTION, MAST ARM MOUNTED
1	EACH	FULL-ACTUATED CONTROLLER AND TYPE IV CABINET, SPECIAL	2	EACH	SIGNAL HEAD, L.E.D., 2-FACE, 3-SECTION, BRACKET MOUNTED
1	EACH	UNINTERRUPTIBLE POWER SUPPLY	2	EACH	SIGNAL HEAD, L.E.D., 2-FACE, 5-SECTION, BRACKET MOUNTED
1	EACH	TRANSCEIVER - FIBER OPTIC	8	EACH	PEDESTRIAN SIGNAL HEAD, L.E.D., 1-FACE, BRACKET MOUNTED WITH COUNTDOWN TIMER
1953	FOOT	ELECTRIC CABLE IN CONDUIT, SIGNAL NO. 14 2C		EACH	PEDESTRIAN SIGNAL HEAD, L.E.D., 2-FACE, BRACKET MOUNTED WITH COUNTDOWN TIMER
3181	FOOT	ELECTRIC CABLE IN CONDUIT, SIGNAL NO. 14 3C	2	EACH	TRAFFIC SIGNAL BACKPLATE, LOUVERED, ALUMINUM
3133	FOOT	ELECTRIC CABLE IN CONDUIT, SIGNAL NO. 14 5C	11	EACH	INDUCTIVE LOOP DETECTOR
1675	FOOT	ELECTRIC CABLE IN CONDUIT, SIGNAL NO. 14 7C	1094	FOOT	DETECTOR LOOP, TYPE I
2750	FOOT	ELECTRIC CABLE IN CONDUIT, LEAD-IN, NO. 14 1-PAIR	* 3	EACH	LIGHT DETECTOR
50	FOOT	ELECTRIC CABLE IN CONDUIT, SERVICE, NO. 6 2C	* 1	EACH	LIGHT DETECTOR AMPLIFIER
647	FOOT	ELECTRIC CABLE IN CONDUIT, GROUNDING, NO. 6 1C	10	EACH	PEDESTRIAN PUSH-BUTTON

I.D.O.T. TRAFFIC SIGNAL INSTALLATION ELECTRICAL SERVICE REQUIREMENTS

TYPE	NO. LAMPS	WATTAGE INCAND.	LED	% OPERATION	TOTAL WATTAGE
SIGNAL (RED)	22	17		0.50	187.00
(YELLOW)	22	25		0.25	137.50
(GREEN)	22	15		0.25	82.50
ARROW	16	12		0.10	19.20
PED. SIGNAL	12	25		1.00	300.00
CONTROLLER	1	100		1.00	100.00
ILLUM. SIGN				0.05	-
FLASHER				0.05	-

ENERGY COSTS TO: VILLAGE OF HOFFMAN ESTATES, 1900 HASSELL ROAD, HOFFMAN ESTATES, IL 60169. TOTAL = 826.20

ENERGY SUPPLY CONTACT: MARK GLOECKLE, (630) 691-4529, COMPANY: COMMONWEALTH EDISON

FOUNDATION (DEPTH)	FT. (m)	CABLE SLACK	FT. (m)	VERTICAL	FT. (m)
TYPE A - POST	4 (1.2)	HANDHOLE	6.5 (2.0)	ALL FOUNDATIONS	3.5 (1.0)
D - CONTROLLER	4 (1.2)	DOUBLE HANDHOLE	13 (4.0)	MAST ARM (L) POLE	20'+L-2'
E - M. ARM POLE		SIGNAL POST	2 (1.0)		(6m+L-0.6m)±
		24" (600mm)	10 (3.0)	BRACKET MOUNTED	13 (4.0)
		30" (750mm)	15 (4.6)	PED. PUSHBUTTON	4 (1.2)
		FIBER OPTIC	13 (4.0)	ELECTRIC SERVICE	13.5 (4.1)
		ELECTRIC SERVICE	1 (0.5)	SERVICE TO GROUND	13.5 (4.1)
		GROUND CABLE	1 (0.5)	POST MOUNTED	6 (1.8)