

F.A.P. RTE.	SECTION	COUNTY	TOTAL SHEETS	SHEET NO.
VARIOUS	2006-005 I	COOK	31	1
FED. ROAD DIST. NO. 1	ILLINOIS	CONTRACT NO. 60B22		

FOR INDEX OF SHEETS, SEE SHEET NO. 2

STATE OF ILLINOIS
DEPARTMENT OF TRANSPORTATION
DIVISION OF HIGHWAYS

**PROPOSED
HIGHWAY PLANS**

VARIOUS ROUTES
SECTION 2006-005 I
VARIOUS LOCATIONS
SCOUR COUNTERMEASURES
COOK COUNTY
C-91-311-06

IMPROVEMENT LOCATED IN THE
VILLAGE OF FOREST PARK
VILLAGE OF MAYWOOD
CITY OF DES PLAINES
COOK COUNTY FOREST PRESERVES
VILLAGE OF MAYWOOD
CITY OF CHICAGO
VILLAGE OF RIVERDALE

D-91-311-06



STATE OF ILLINOIS
DEPARTMENT OF TRANSPORTATION
DIVISION OF HIGHWAYS

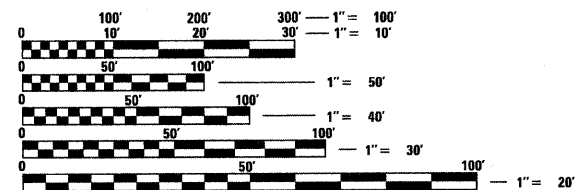
SUBMITTED January 21, 2009

Diana M. O'Keefe as
DEPUTY DIRECTOR OF HIGHWAYS, REGION ONE ENGINEER
May 8, 2009

Charles G. Ingersoll
ENGINEER OF DESIGN AND ENVIRONMENT
May 8, 2009

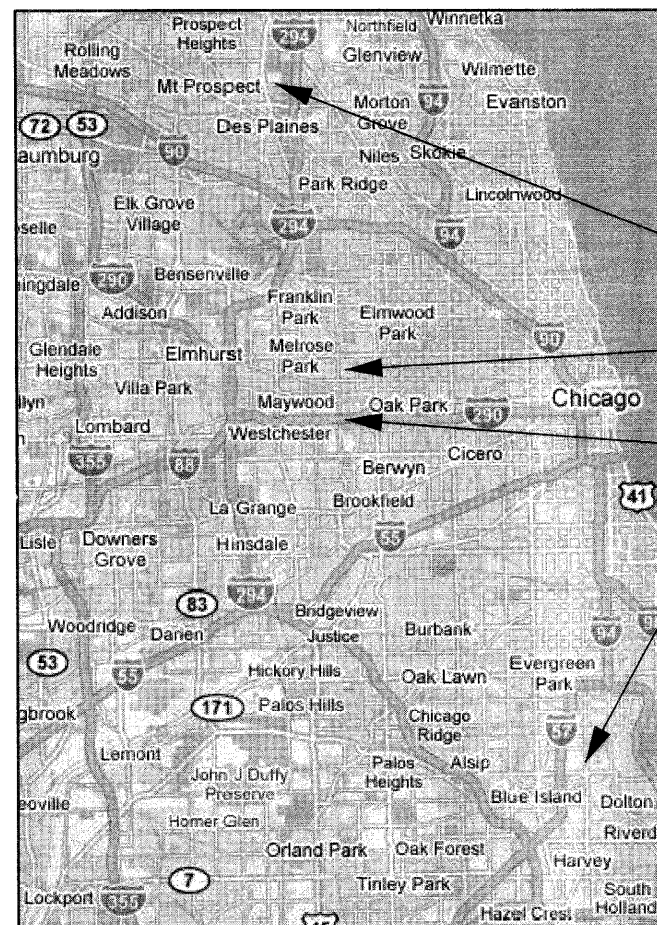
Christine M. Reed
DIRECTOR OF HIGHWAYS, CHIEF ENGINEER

DISTRICT ONE - PLAN PREP ENGINEER: KEN ENG (847) 705-4247



FULL SIZE PLANS HAVE BEEN PREPARED USING STANDARD ENGINEERING SCALES. REDUCED SIZED PLANS WILL NOT CONFORM TO STANDARD SCALES. IN MAKING MEASUREMENTS ON REDUCED PLANS, THE ABOVE SCALES MAY BE USED.

J.U.L.I.E.
JOINT UTILITY LOCATING INFORMATION FOR EXCAVATORS
1-800-892-0123
OR 811



- LOCATION 2: S.N. 016-0551, CENTRAL ROAD OVER DES PLAINES RIVER
- LOCATION 3: S.N. 016-0863, CHICAGO AVENUE OVER DES PLAINES RIVER
- LOCATION 1: S.N. 016-0090, I-290 OVER DES PLAINES RIVER
- LOCATION 4: S.N. 016-0193, HALSTED STREET OVER LITTLE CALUMET RIVER

CONTRACT NO. 60B22



CHRISTIAN-ROGE & ASSOCIATES, INC.
ENGINEERS - PLANNERS - SURVEYORS
211 W. WACKER DRIVE CHICAGO, IL. 60606
TELEPHONE: 312-372-2023



Birinder S. Sachdeva January 20, 2009
BIRINDER S. SACHDEVA, P.E. DATE
EXPIRES: 11-30-2009



Bhadrish N. Shah January 20, 2009
BHADRISH N. SHAH, S.E., P.E. DATE
EXPIRES: 11-30-2010

**PRINTED BY THE AUTHORITY
OF THE STATE OF ILLINOIS**