

STATE OF ILLINOIS  
DEPARTMENT OF TRANSPORTATION

F.A. RTE.	SECTION	COUNTY	TOTAL SHEETS	SHEET NO.
	PRK O&C 2021	ST. CLAIR	15	1
		ILLINOIS	CONTRACT NO. 46920	

FOR INDEX OF SHEETS, SEE SHEET NO. 02

**PROPOSED  
HIGHWAY PLANS**

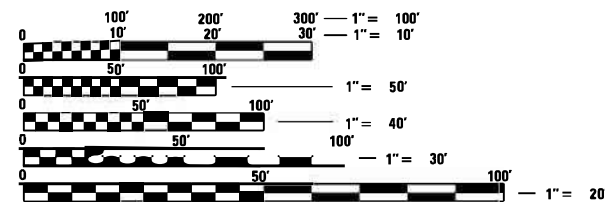
STATE PARK ROADS  
PEABODY RIVER KING STATE PARK  
SECTION PRK O&C 2021

OIL AND CHIP  
ST. CLAIR COUNTY

C-30-005-20



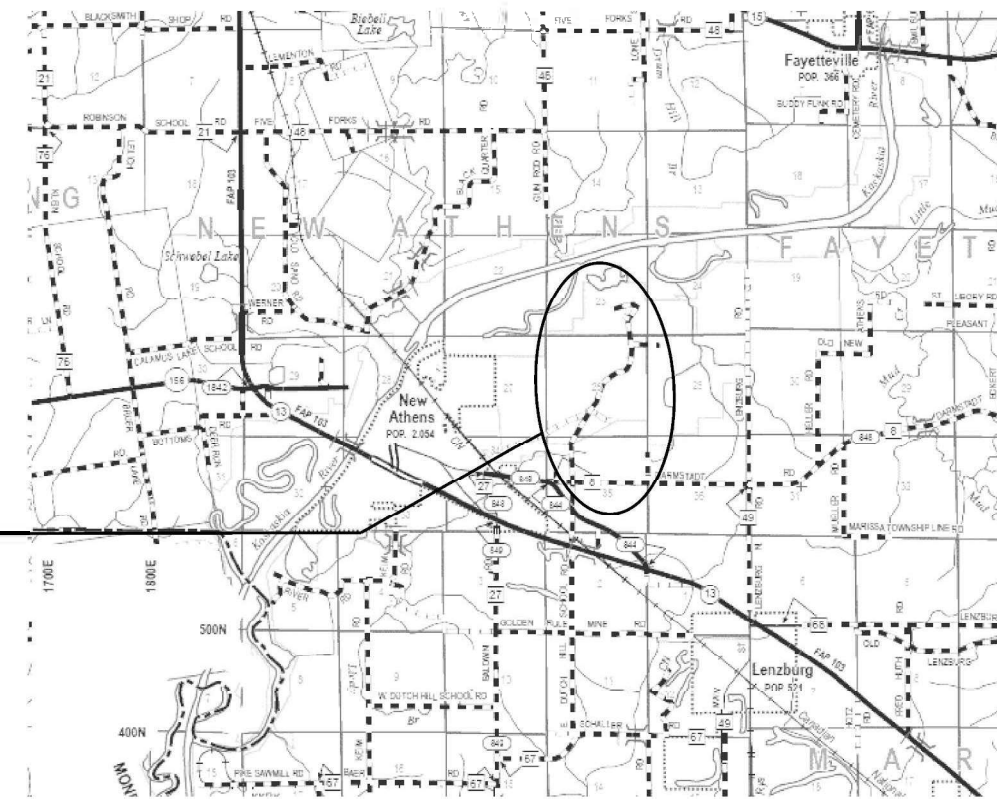
**IDNR FILE # 4-20-025**



FULL SIZE PLANS HAVE BEEN PREPARED USING STANDARD ENGINEERING SCALES. REDUCED SIZED PLANS WILL NOT CONFORM TO STANDARD SCALES. IN MAKING MEASUREMENTS ON REDUCED PLANS, THE ABOVE SCALES MAY BE USED.

J.U.I.E.  
JOINT UTILITY LOCATION INFORMATION FOR EXCAVATION  
1-800-892-0123  
OR 811

PROJECT LOCATION



GROSS AND NET LENGTH = 4.11 MILES INTERNAL PARK ROADS

CONTRACT NO. 46920

STATE OF ILLINOIS  
DEPARTMENT OF TRANSPORTATION

SUBMITTED MAY 7, 2021

*[Signature]*  
REGIONAL ENGINEER

May 7, 2021  
*[Signature]*  
ENGINEER OF DESIGN AND ENVIRONMENT

May 7, 2021  
*[Signature]*  
DIRECTOR OF HIGHWAYS PROJECT IMPLEMENTATION 13

**PRINTED BY THE AUTHORITY  
OF THE STATE OF ILLINOIS**

GENERAL NOTES:

1. ANY REFERENCE TO A STANDARD IN THESE PLANS SHALL BE INTERPRETED TO MEAN THE EDITION AS INDICATED BY THE SUB NUMBER LISTED IN THE INDEX OF SHEETS OR THE COPY OF THE STANDARD INCLUDED IN THESE PLANS.
2. IN ADDITION TO FIELD SURVEYS, PLAN DIMENSIONS AND DETAILS RELATIVE TO THE EXISTING FACILITIES HAVE BEEN TAKEN FROM EXISTING PLANS AND ARE SUBJECT TO CONSTRUCTION VARIATIONS. IT SHALL BE THE CONTRACTOR'S RESPONSIBILITY TO VERIFY SUCH DIMENSIONS AND DETAILS IN THE FIELD. SUCH VARIATIONS SHALL NOT BE A CAUSE FOR ADDITIONAL COMPENSATION DUE TO A CHANGE IN THE SCOPE OF WORK; HOWEVER, THE CONTRACTOR WILL BE PAID FOR THE QUANTITY ACTUALLY FURNISHED AT THE UNIT PRICE BID FOR THE WORK.
3. THE CONTRACTOR SHALL BE RESPONSIBLE FOR PROTECTING UTILITY PROPERTY FROM CONSTRUCTION OPERATIONS, AS OUTLINED IN ARTICLE 107.31 OF THE STANDARD SPECIFICATIONS. THE J.U.L.I.E. NUMBER IS 1-800-892-0123. A MINIMUM OF 48 HOURS ADVANCE NOTICE IS REQUIRED.

HIGHWAY STANDARDS

000001-08  
 701901-08  
 BLR 17-4

INDEX OF SHEETS

- |       |                                  |
|-------|----------------------------------|
| 1     | COVER SHEET                      |
| 2     | STANDARDS AND GENERAL NOTES      |
| 3     | SUMMARY OF QUANTITIES            |
| 4     | SCHEDULES                        |
| 5-13  | PEABODY RIVER KING LOCATION MAPS |
| 14-15 | KASKASKIA LOCATION MAPS          |

REV. - MS

FILE NAME = D:\CDD\ENV\GEN\WPDDCS\ - Environment Section\Proj Development Unit\Park Roads\Current\Drawings\Peabody River King\CAD\46920\REVISED Shtdgn	USER NAME = medonievj	DESIGNED -	REVISED -	<b>STATE OF ILLINOIS DEPARTMENT OF TRANSPORTATION</b>	<b>STANDARDS AND GENERAL NOTES</b>			F.A. RTE.	SECTION	COUNTY	TOTAL SHEETS	SHEET NO.
	PLOT SCALE = 100.0000' / in.	CHECKED -	REVISED -					PRK O&C 2021	ST. CLAIR	15	2	
Default	PLOT DATE = 4/21/2021	DATE -	REVISED -	SCALE:	SHEET 1	OF 1	SHEETS	STA.	TO STA.	ILLINOIS FED. AID PROJECT		
											<b>CONTRACT NO. 46920</b>	

CODE NO.	ITEM	UNIT	TOTAL QUANTITY	PARK ROADS 100% STATE ROADWAY
				0005 RURAL
35800100	PREPARATION OF BASE	SQ YD	58,364	58,364
35800200	AGGREGATE BASE REPAIR	TON	3,324	3,324
40200100	AGGREGATE SURFACE COURSE, TYPE A	TON	273	273.0
40300200	BITUMINOUS MATERIALS (PRIME COAT)	TON	99.2	99.2
40300400	BITUMINOUS MATERIALS (COVER AND SEAL COATS)	TON	236	236
40300500	COVER COAT AGGREGATE	TON	1,459.0	1,459
40300600	SEAL COAT AGGREGATE	TON	730.0	730
67100100	MOBILIZATION	LSUM	1	1
X4401198	HMA SURFACE REMOVAL, VARIABLE DEPTH	SQ YD	9,044.0	9,044.0

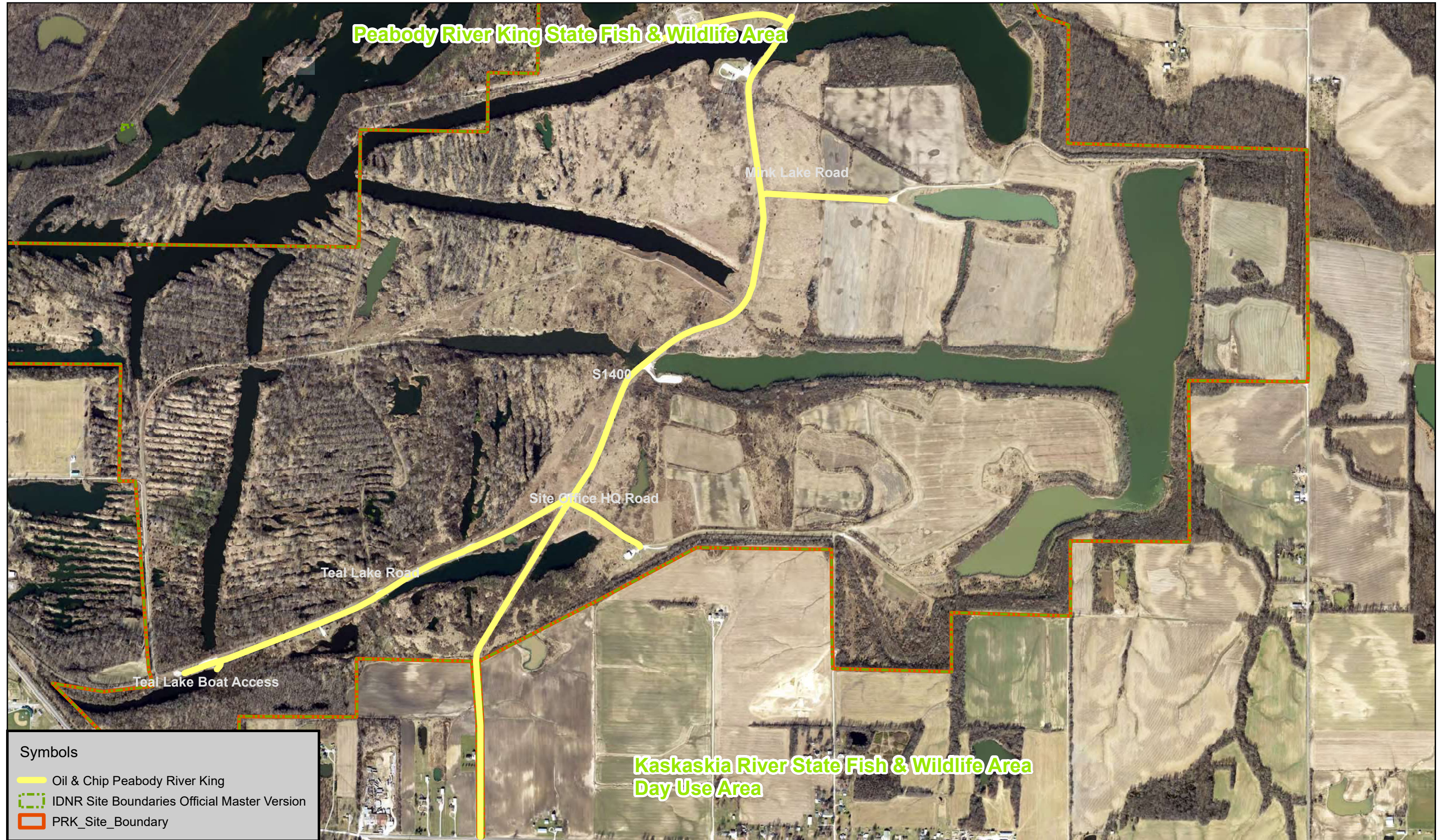
REV. - MS

FILE NAME =	USER NAME = medonievj	DESIGNED -	REVISED -	<b>STATE OF ILLINOIS DEPARTMENT OF TRANSPORTATION</b>	<b>SUMMARY OF QUANTITIES</b>				F.A. RTE.	SECTION	COUNTY	TOTAL SHEETS	SHEET NO.
D:\CODEENV\GEN\WPDDCS\ - Environment Section\Proj Development Unit\Park Roads\Current\Drawings\Peabody River King\CAD\46920		DRAWN -	CHECKED -		PRK O&C 2021	ST. CLAIR	15	3					
Default	PLOT SCALE = 100.0000' / in.	CHECKED -	REVISED -		SCALE:	SHEET 1	OF 1	SHEETS	STA.	TO STA.	ILLINOIS FED. AID PROJECT		
	PLOT DATE = 4/21/2021	DATE -	REVISED -										

Application Rates:	Prime Coat	0.40	gal/SY	Prime Density	8.5	lb/gal
	Bit Cover Coat 1	0.35	gal/SY	Cov. Coat Density	8.5	lb/gal
	Agg Cover Coat 1	25	lb/SY	Bit Seal Coat Den.	8.5	lb/gal
	Bit Cover Coat 2	0.30	gal/SY	Agg Surf Course	2.05	Tons/CUYD
	Agg Cover Coat 2	25	lb/SY			
	Bit Seal Coat	0.30	gal/SY			
	Bit Seal Coat Agg	25	lb/SY			

Location	Length (Feet)	Width (Feet)	Area (SQFT)	Area (SQYD)	Existing Surface	Treatment	Prime Coat (Tons)	Bit Cover Coat 1 (Tons)	Agg Cover Coat 1 (Tons)	Bit Cover Coat 2 (Tons)	Agg Cover Coat 2 (Tons)	Bit Seal Coat (Tons)	Bit Seal Coat Agg (Tons)	Prep Of Base (SQYD)	Aggregate Base Repair (Tons)	Agg Surf Cse T-A (Tons)	Bit Surf Rem (Var Dep) (SQYD)
<b>Main Entrance Road</b>																	
Roadway	3,700.0	22.0	81,400.0	9,044.44	O&C	A-3	15.38	13.45	113.06	11.53	113.06	11.53	113.06	9,044.44	515.03	--	9,044.44
Roadway	6,850.0	22.0	150,700.0	16,744.44	Agg	A-3	28.47	24.91	209.31	21.35	209.31	21.35	209.31	16,744.44	953.50	--	--
Eagle Lake Boat Access (ELBA)			31,285.0	3,476.11	Agg	A-3	5.91	5.17	43.45	4.43	43.45	4.43	43.45	3,476.11	197.95	--	--
Parking Area #7 (PA#7)			11,300.0	1,255.56	Agg	A-3	2.13	1.87	15.69	1.60	15.69	1.60	15.69	1,255.56	71.50	--	--
Beaver Lake Boat Access (BLBA)			44,200.0	4,911.11	Agg	A-3	8.35	7.31	61.39	6.26	61.39	6.26	61.39	4,911.11	279.66	--	--
<b>Teal Lake Road</b>																	
Teal Lake Road	4,740.0	18.0	85,320.0	9,480.00	Agg	A-3	16.12	14.10	118.50	12.09	118.50	12.09	118.50	9,480.00	539.83	--	--
Teal Boat Access	100.0	20.0	2,000.0	222.22	Agg	A-3	0.38	0.33	2.78	0.28	2.78	0.28	2.78	222.22	12.65	--	--
CLA			5,920.0	657.78	Agg	A-3	1.12	0.98	8.22	0.84	8.22	0.84	8.22	657.78	37.46	--	--
Parking Area #1 (PA#1)			10,260.0	1,140.00	Agg	A-3	1.94	1.70	14.25	1.45	14.25	1.45	14.25	1,140.00	64.92	--	--
Parking Area #2 (PA#2)			1,760.0	195.56	Agg	A-3	0.33	0.29	2.44	0.25	2.44	0.25	2.44	195.56	11.14	--	--
Parking Area #3 (PA#3)			3,320.0	368.89	Agg	A-3	0.63	0.55	4.61	0.47	4.61	0.47	4.61	368.89	21.01	--	--
Parking Area #4 (PA#4)			4,000.0	444.44	Agg	A-3	0.76	0.66	5.56	0.57	5.56	0.57	5.56	444.44	25.31	--	--
Parking Area #5 (PA#5)			2,000.0	222.22	Agg	A-3	0.38	0.33	2.78	0.28	2.78	0.28	2.78	222.22	12.65	--	--
Parking Area #6 (PA#6)			1,000.0	111.11	Agg	A-3	0.19	0.17	1.39	0.14	1.39	0.14	1.39	111.11	6.33	--	--
<b>Site Office HQ Road</b>																	
Roadway	950.0	16.0	15,200.0	1,688.89	Agg	A-3	2.87	2.51	21.11	2.15	21.11	2.15	21.11	1,688.89	96.17	--	--
HQ Parking			10,800.0	1,200.00	Agg	A-3	2.04	1.79	15.00	1.53	15.00	1.53	15.00	1,200.00	68.33	--	--
<b>Mink Lake Road</b>																	
Mink Lake Road	1,400.0	15.0	21,000.0	2,333.33	Agg	A-3	3.97	3.47	29.17	2.98	29.17	2.98	29.17	2,333.33	132.87	--	--
Parking Area #8 (PA#8)			1,000.0	111.11	Agg	A-3	0.19	0.17	1.39	0.14	1.39	0.14	1.39	111.11	6.33	--	--
Mink Lake Access (MLA)			7,130.0	792.22	Agg	A-3	1.35	1.18	9.90	1.01	9.90	1.01	9.90	792.22	45.11	--	--
<b>Beaver Lake Road</b>																	
Beaver Lake Road	1,460.0	18.0	26,280.0	2,920.00	Agg	A-3	4.96	4.34	36.50	3.72	36.50	3.72	36.50	2,920.00	166.28	--	--
Parking Area #9 (PA#9)			5,400.0	600.00	Agg	A-3	1.02	0.89	7.50	0.77	7.50	0.77	7.50	600.00	34.17	--	--
Parking Area #10 (PA#10)			4,000.0	444.44	Agg	A-3	0.76	0.66	5.56	0.57	5.56	0.57	5.56	444.44	25.31	--	--
<b>Kaskaskia River SF&amp;WL Area</b>																	
Roadway (3" agg surface)	1200	12	14,400.0	1,600.00	AGG	3" agg surf	--	--	--	--	--	--	--	--	--	273.33	--
Totals			59,963.89				99.22	86.82	729.55	74.41	729.55	74.41	729.55	58,363.89	3,323.50	273.33	9,044.44





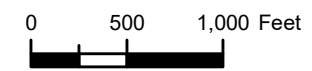
**Symbols**

- Oil & Chip Peabody River King
- IDNR Site Boundaries Official Master Version
- PRK\_Site\_Boundary



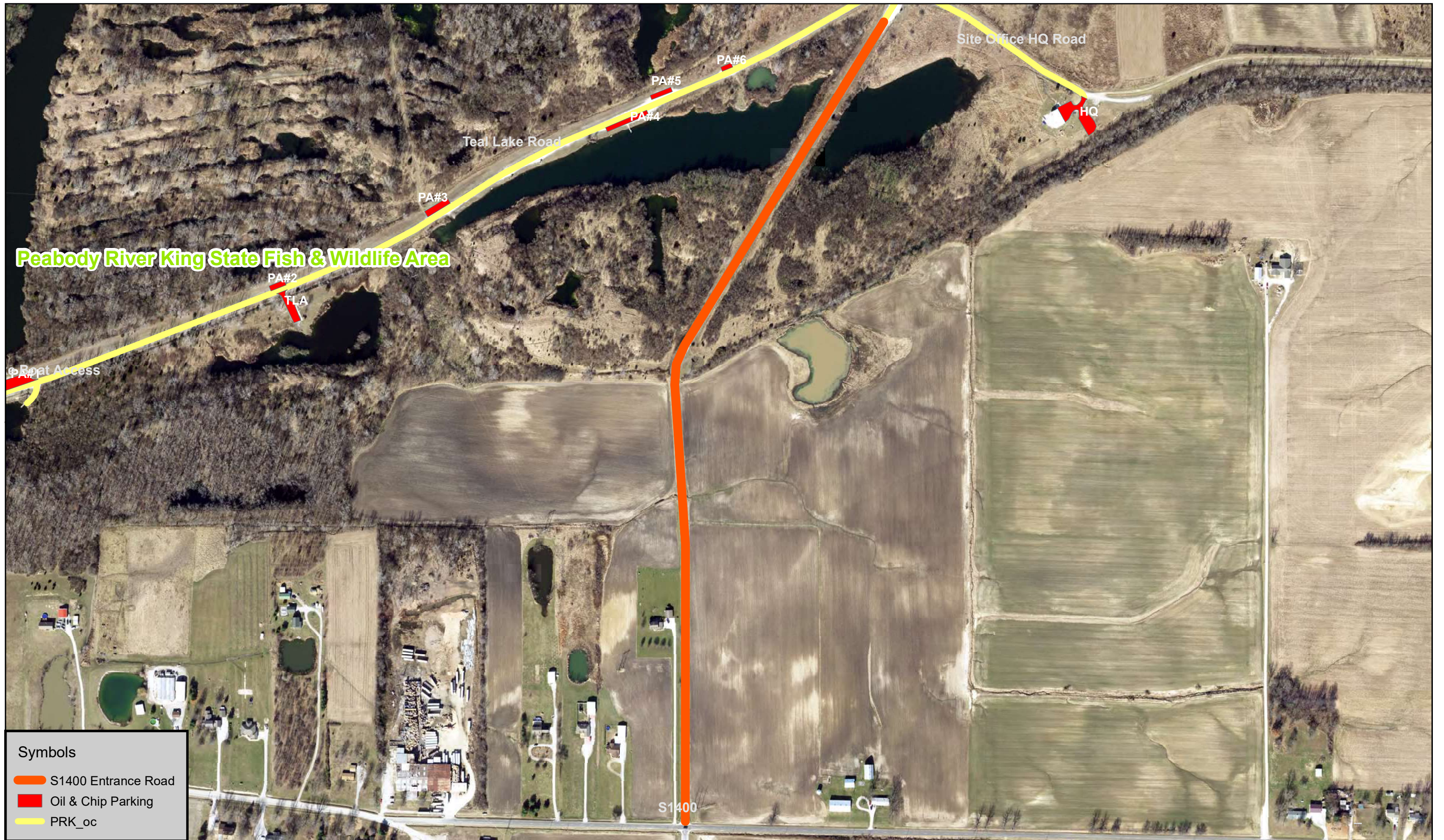
Regional CERP Code: PRK-20-00  
**Peabody River King SFWA - Oil & Chip Roads**  
 St. Clair County/New Athens E Quad (38089C7) T 2 S, R 7 W, Sec 23

**LOCATION MAP**




Section	County	Total Sheets	Sheet No.
Overall	St. Clair	15	5
PRC O&C 2020		Contract No. 46920	



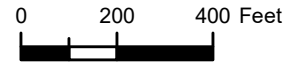


**Symbols**

- S1400 Entrance Road
- Oil & Chip Parking
- PRK\_oc

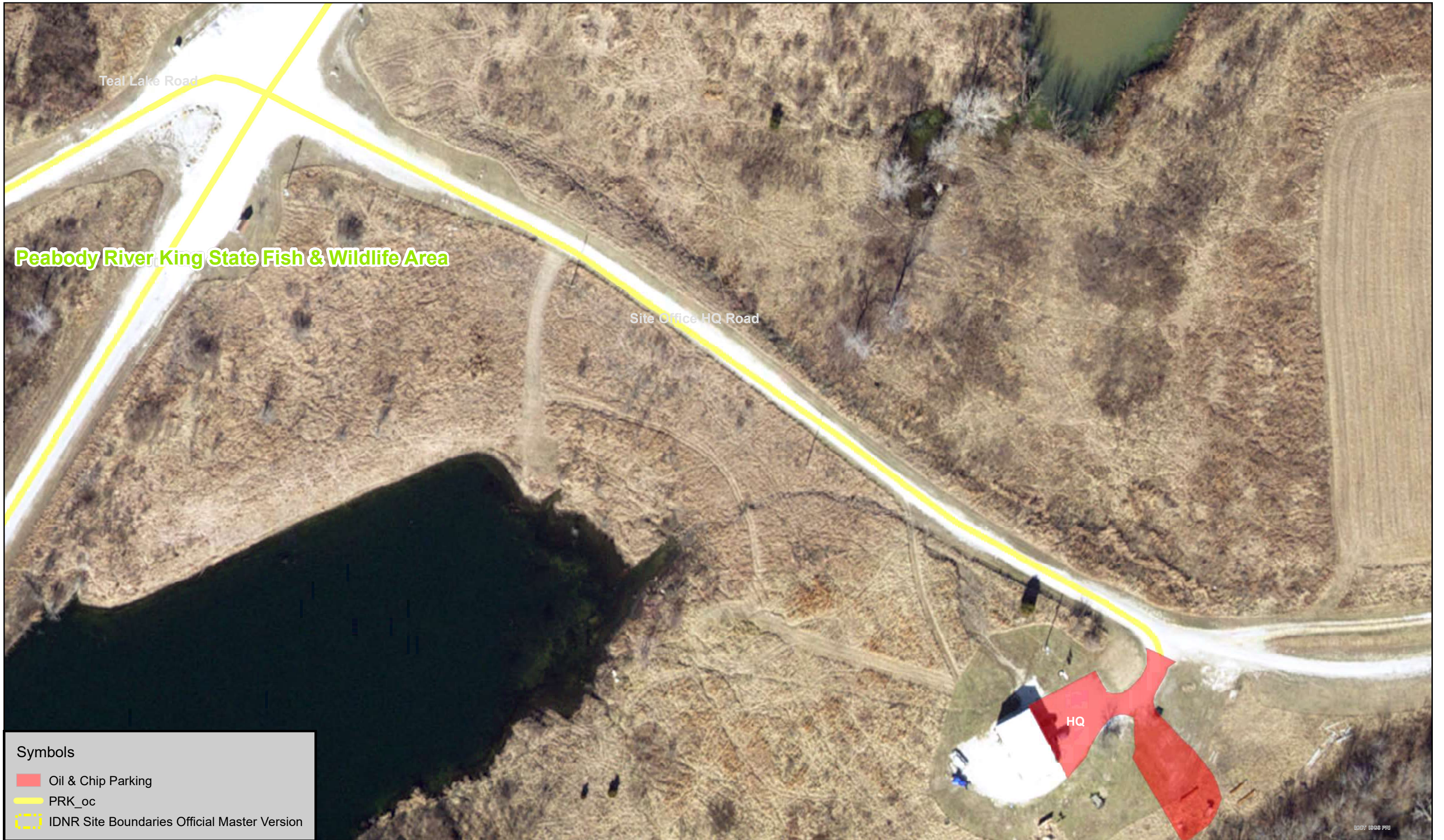

 Regional CERP Code: PRK-20-00  
**Peabody River King SFWA - Oil & Chip Roads - Entrance Road**  
 St. Clair County/New Athens E Quad (38089C7) T 2 S, R 7 W, Sec 23

**LOCATION MAP**



Section	County	Total Sheets	Sheet No.
Overall	St. Clair	15	6
PRC O&C 2020		Contract No. 46920	





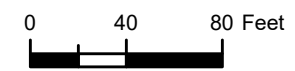
**Symbols**

- Oil & Chip Parking
- PRK\_oc
- IDNR Site Boundaries Official Master Version



Regional CERP Code: PRK-20-00  
**Peabody River King SFWA - Oil & Chip Roads**  
 St. Clair County/New Athens E Quad (38089C7) T 2 S, R 7 W, Sec 23

**SCHEMATIC SITE PLAN**



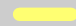


Section	County	Total Sheets	Sheet No.
HQ Road	St. Clair	15	7
PRC O&C 2020		Contract No. 46920	



Peabody River King State Fish & Wildlife Area



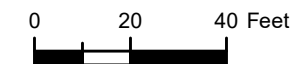
Symbols

-  PRK\_oc
-  Oil & Chip Parking
-  IDNR Site Boundaries Official Master Version



Regional CERP Code: PRK-20-00  
**Peabody River King SFWA - Oil & Chip Roads**  
 St. Clair County/New Athens E Quad (38089C7) T 2 S, R 7 W, Sec 23

**SCHEMATIC SITE PLAN**



IDOT ISGS PRI

Section	County	Total Sheets	Sheet No.
HQ	St. Clair	15	8
PRC O&C 2020		Contract No. 46920	





**Symbols**

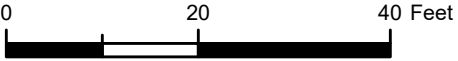
- PRK\_oc
- Oil & Chip Parking
- IDNR Site Boundaries Official Master Version

Source: Esri, Maxar, GeoEye, Earthstar



Regional CERP Code: PRK-20-00  
**Peabody River King SFWA - Oil & Chip Roads**  
 St. Clair County/New Athens E Quad (38089C7) T 2 S, R 7 W, Sec 23

**SCHEMATIC SITE PLAN**



Section	County	Total Sheets	Sheet No.
Eagle Lk PK	St. Clair	15	9
PRC O&C 2020		Contract No. 46920	



**Peabody River King State Fish & Wildlife Area**



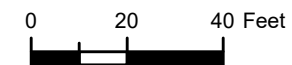
**Symbols**

- Oil & Chip Parking
- PRK\_oc
- IDNR Site Boundaries Official Master Version



Regional CERP Code: PRK-20-00  
**Peabody River King SFWA - Oil & Chip Roads**  
 St. Clair County/New Athens E Quad (38089C7) T 2 S, R 7 W, Sec 23

**SCHEMATIC SITE PLAN**



IDOT ISGS PRI

Section	County	Total Sheets	Sheet No.
BLBA	St. Clair	15	10
PRC O&C 2020		Contract No. 46920	



Peabody River King State Fish & Wildlife Area

PA#8

Mink Lake Road

MLA

S1400

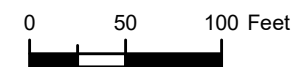
Symbols

- Oil & Chip Parking
- PRK\_oc
- IDNR Site Boundaries Official Master Version



Regional CERP Code: PRK-20-00  
**Peabody River King SFWA - Oil & Chip Roads**  
 St. Clair County/New Athens E Quad (38089C7) T 2 S, R 7 W, Sec 23

**SCHEMATIC SITE PLAN**



Section	County	Total Sheets	Sheet No.
Mink Lk Rd	St. Clair	15	11
PRC O&C 2020		Contract No. 46920	

DOT SGS PRI



**Peabody River King State Fish & Wildlife Area**



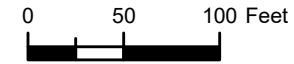
**Symbols**

- Oil & Chip Parking
- PRK\_oc
- IDNR Site Boundaries Official Master Version



Regional CERP Code: PRK-20-00  
**Peabody River King SFWA - Oil & Chip Roads**  
 St. Clair County/New Athens E Quad (38089C7) T 2 S, R 7 W, Sec 23

**SCHEMATIC SITE PLAN**



Section	County	Total Sheets	Sheet No.
Beaver Lk	St. Clair	15	12
PRC O&C 2020		Contract No. 46920	

IDOT 1808 PRJ





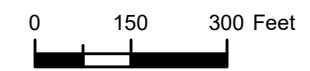
**Symbols**

- Oil & Chip Parking
- PRK\_oc
- IDNR Site Boundaries Official Master Version



Regional CERP Code: PRK-20-00  
**Peabody River King SFWA - Oil & Chip Roads**  
 St. Clair County/New Athens E Quad (38089C7) T 2 S, R 7 W, Sec 23

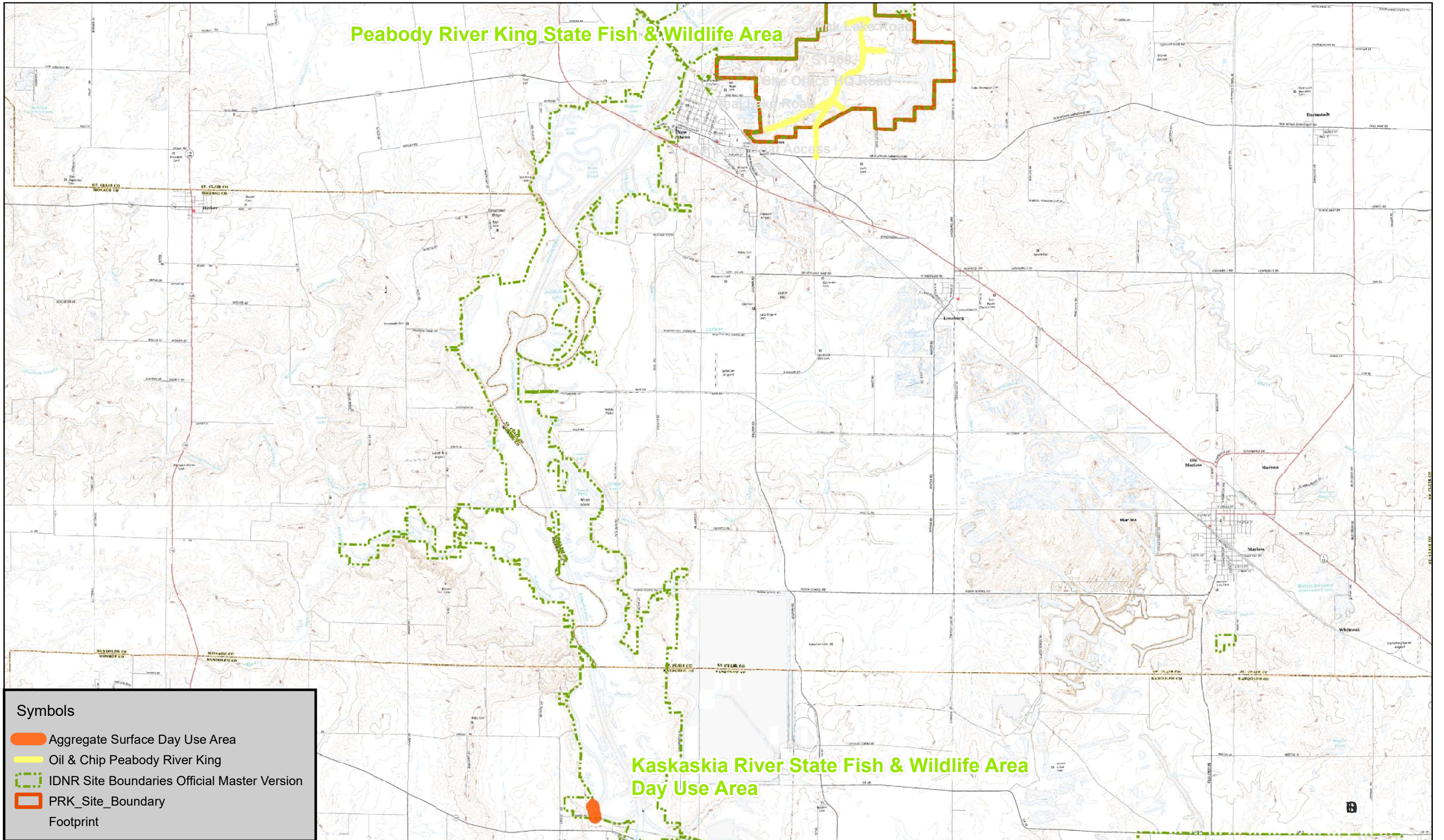
**SCHEMATIC SITE PLAN**



Section	County	Total Sheets	Sheet No.
Teal Lk Rd	St. Clair	15	13
PRC O&C 2020		Contract No. 46920	



**Peabody River King State Fish & Wildlife Area**



**Kaskaskia River State Fish & Wildlife Area Day Use Area**

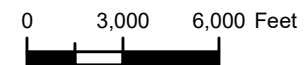
**Symbols**

- Aggregate Surface Day Use Area
- Oil & Chip Peabody River King
- IDNR Site Boundaries Official Master Version
- PRK\_Site\_Boundary
- Footprint



Regional CERP Code: PRK-20-00  
**Peabody River King SFWA - Oil & Chip Roads**  
 St. Clair County/New Athens E Quad (38089C7) T 2 S, R 7 W, Sec 23

**LOCATION MAP**






Section	County	Total Sheets	Sheet No.
Overall	St. Clair	15	14
PRC O&C 2020		Contract No. 46920	



Peabody River King State Fish & Wildlife Area

Kaskaskia River State Fish & Wildlife Area  
Day Use Area

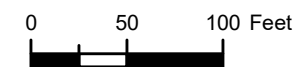
**Symbols**

-  Aggregate Surface Day Use Area
-  IDNR Site Boundaries Official Master Version
-  PRK\_Site\_Boundary



Regional CERP Code: PRK-20-00  
**Peabody River King SFWA - Oil & Chip Roads**  
St. Clair County/New Athens E Quad (38089C7) T 2 S, R 7 W, Sec 23

**LOCATION MAP**



Section	County	Total Sheets	Sheet No.
Overall	St. Clair	15	15
PRC O&C 2020		Contract No. 46920	