

INDEX OF SHEETS

- 1 . COVER SHEET
- 2 . GENERAL NOTES
- 3 - 4 . SUMMARY OF QUANTITIES
- 5 - 6 . TYPICAL SECTIONS
- 7 - 10 . SCHEDULES - EASTBOUND LANES
- 11 - 14 . SCHEDULES - WESTBOUND LANES
- 15 . TRAFFIC CONTROL AND PROTECTION, STANDARD 701400
- 16 - 17 . CLASS A PATCHING DETAILS
- 18 - 19 . CLASS B PATCHING DETAILS
- 20 . PAVEMENT MARKING

STANDARDS

- 000001-08 STANDARD SYMBOLS, ABBREVIATIONS AND PATTERNS
- 001001-02 AREAS OF REINFORCEMENT BARS
- 001006 DECIMAL OF AN INCH AND OF A FOOT
- 701101-05 OFF-ROAD OPERATIONS, MULTILANE, 15' (4.5 m) TO 24" (600 mm) FROM PAVEMENT EDGE
- 701106-02 OFF-ROAD OPERATIONS, MULTILANE, MORE THAN 15' (4.5 m) AWAY
- 701401-12 LANE CLOSURE, FREEWAY/EXPRESSWAY
- 701411-09 LANE CLOSURE, MULTILANE, AT ENTRANCE OR EXIT RAMP FOR SPEEDS ≥ 45 MPH
- 701426-09 LANE CLOSURE, MULTILANE INTERMITTENT OR MOVING OPERATION, FOR SPEEDS ≥ 45 MPH
- 420001-09 PAVEMENT JOINTS
- 442001-04 CLASS A PATCHES
- 780001-05 TYPICAL PAVEMENT MARKINGS

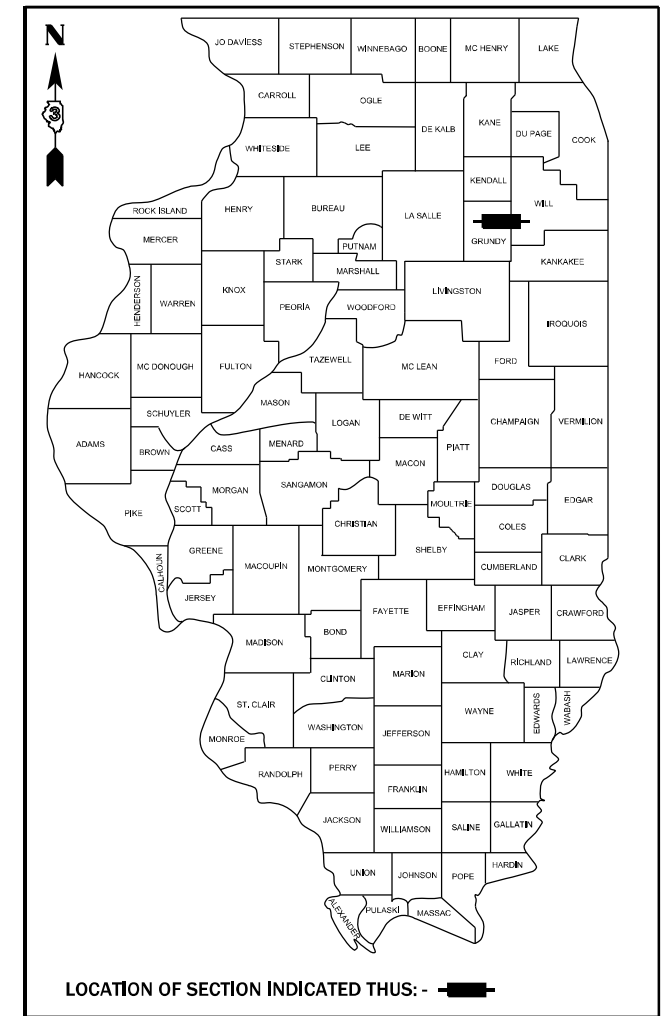
STATE OF ILLINOIS
DEPARTMENT OF TRANSPORTATION

PROPOSED
HIGHWAY PLANS

F.A.I. ROUTE 80 (I-80)
SECTION 32(1-4)PP
PAVEMENT PATCHING
GRUNDY COUNTY
C-93-076-21

F.A.I. RTE.	SECTION	COUNTY	TOTAL SHEETS	SHEET NO.
80	32(1-4)PP	GRUNDY	20	1
		ILLINOIS	CONTRACT NO. 66L77	

D-93-041-21



FUNCTIONAL CLASSIFICATION
URBAN/RURAL
INTERSTATE
F.A.I.P. ROUTE 80 (I-80)
2019 ADT = 53900
P.V. 69.3% S.U. 4.2% M.U. 26.4%

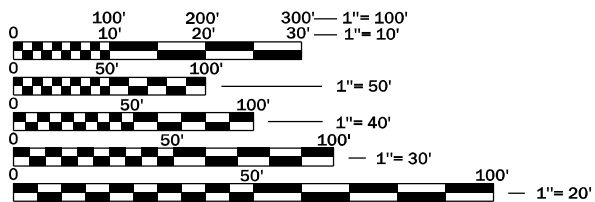
STATE OF ILLINOIS
DEPARTMENT OF TRANSPORTATION

SUBMITTED 3/23 21
Masood Ahmad [Signature] REGIONAL ENGINEER

May 7, 2021 [Signature] ENGINEER OF DESIGN AND ENVIRONMENT

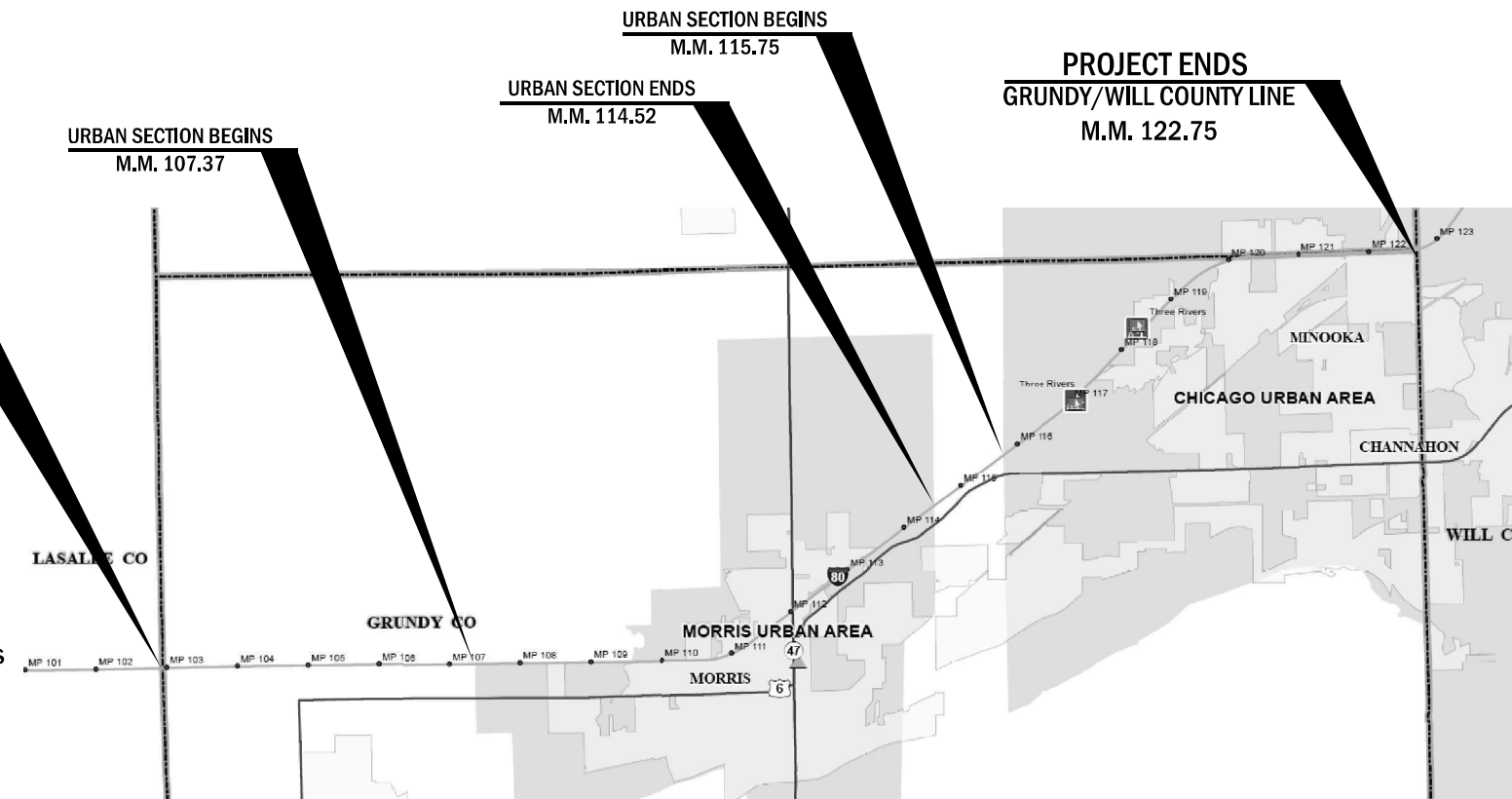
May 7, 2021 [Signature] DIRECTOR OF HIGHWAYS PROJECT IMPLEMENTATION

PROJECT BEGIN
LASALLE/GRUNDY LINE
M.M. 102.99



FULL SIZE PLANS HAVE BEEN PREPARED USING STANDARD ENGINEERING SCALES. REDUCED SIZED PLANS WILL NOT CONFORM TO STANDARD SCALES. IN MAKING MEASUREMENTS ON REDUCED PLANS, THE ABOVE SCALES MAY BE USED.

J.U.L.I.E.
JOINT UTILITY LOCATION INFORMATION FOR EXCAVATION
1-800-892-0123
OR 811



PROJECT ENGINEER: JOE KANNEL P.E.
UNIT CHIEF: RON WOODSHANK
DISTRICT 3 NO. (815) 434-6131
CONTRACT NO. 66L77

PRINTED BY THE AUTHORITY
OF THE STATE OF ILLINOIS

GENERAL NOTES

PLAN DIMENSIONS AND DETAILS RELATIVE TO EXISTING PLANS ARE SUBJECT TO NOMINAL CONSTRUCTION VARIATIONS. THE CONTRACTOR SHALL FIELD VERIFY EXISTING DIMENSIONS AND DETAILS AFFECTING NEW CONSTRUCTION AND MAKE NECESSARY APPROVED ADJUSTMENTS PRIOR TO CONSTRUCTION OR ORDERING OF MATERIALS. SUCH VARIATIONS SHALL NOT BE CAUSE FOR ADDITIONAL COMPENSATION FOR A CHANGE IN SCOPE OF WORK; HOWEVER, THE CONTRACTOR WILL BE PAID FOR THE QUANTITY ACTUALLY FURNISHED AT THE UNIT PRICE BID FOR THE WORK.

FOR STABILIZATION, ALL TYPE III BARRICADES WILL REQUIRE A MINIMUM OF FOUR SAND BAGS PER BARRICADE.

ALL EXCAVATED MATERIAL, WHICH INCLUDES DIGGING OR GRADING OF ANY SOIL OR FILL MATERIAL, WITH THE EXCEPTION OF AGGREGATE FILLS, MUST BE INCORPORATED WITHIN THE IDOT RIGHT OF WAY DUE TO ENVIRONMENTAL DOCUMENTATION REQUIREMENTS.

ANY REFERENCE TO A STANDARD IN THESE PLANS SHALL BE INTERPRETED TO MEAN THE EDITION AS INDICATED BY THE SUBNUMBER SHOWN IN THE LIST OF STANDARDS OR THE COPY INCLUDED IN THESE PLANS.

THE CONTRACTOR SHALL CONTACT JULIE AT LEAST 48 HOURS PRIOR TO EXCAVATION TO DETERMINE WHICH UTILITIES ARE IN THE AREA.

COMMITMENTS

STATE OF ILLINOIS
DEPARTMENT OF TRANSPORTATION
DISTRICT THREE
AS BUILT INFORMATION

SUPERVISING CONSTRUCTION FIELD ENGINEER

RESIDENT ENGINEER / TECHNICIAN

START & END DATES
OF CONSTRUCTION:

INSPECTORS:

STATE OF ILLINOIS
DEPARTMENT OF TRANSPORTATION
DISTRICT THREE

PREPARED BY: _____
DISTRICT STUDIES & PLANS ENGINEER

DATE: _____

EXAMINED BY: _____
DISTRICT CONSTRUCTION ENGINEER

DISTRICT MATERIALS ENGINEER

DISTRICT OPERATIONS ENGINEER

MODEL: Default
FILE NAME: p:\pub\harrington.edu\illinois.gov\PIWDOT\Documents\IDOT_Offices\District 3\Projects\ID366L77\CADD\DATA\ID366L77_PLANS.dwg

USER NAME = woodshank1	DESIGNED -	REVISED -
	DRAWN -	REVISED -
PLOT SCALE = 100,0000 ' / in.	CHECKED -	REVISED -
PLOT DATE = 2/28/2021	DATE -	REVISED -

**STATE OF ILLINOIS
DEPARTMENT OF TRANSPORTATION**

GENERAL NOTES

SCALE: SHEET 1 OF 1 SHEETS STA. TO STA.

F.A.I. RTE.	SECTION	COUNTY	TOTAL SHEETS	SHEET NO.
80	32(1-4)PP	GRUNDY	20	2
			CONTRACT NO. 66L77	
		ILLINOIS	FED. AID PROJECT	

CODE NO.	ITEM	UNIT	TOTAL QUANTITY	CONSTRUCTION CODE	
				CONTRACT MAINTENANCE 100% STATE	
				ROADWAY 0006	ROADWAY 0006
				URBAN	RURAL
* 20201200	REMOVAL AND DISPOSAL OF UNSUITABLE MATERIAL	CU YD	370	217	153
21001000	GEOTECHNICAL FABRIC FOR GROUND STABILIZATION	SQ YD	793	466	327
31200500	STABILIZED SUBBASE - HOT-MIX ASPHALT, 4"	SQ YD	793	466	327
44200577	CLASS A PATCHES, TYPE II, 12 INCH	SQ YD	437	267	170
44200581	CLASS A PATCHES, TYPE III, 12 INCH	SQ YD	156	80	76
44200583	CLASS A PATCHES, TYPE IV, 12 INCH	SQ YD	208	127	81
44200620	CLASS A PATCHES, TYPE II, 14 INCH	SQ YD	284	246	38
44200624	CLASS A PATCHES, TYPE III, 14 INCH	SQ YD	32	32	
44201043	CLASS B PATCHES, TYPE II, 16 INCH	SQ YD	269		269
44201299	DOWEL BARS 1 1/2"	EACH	580		580
44213000	PATCHING REINFORCEMENT	SQ YD	1117	752	365
44213200	SAW CUTS	FOOT	5400	2686	2714
44213204	TIE BARS 3/4"	EACH	4228	2890	1338
67100100	MOBILIZATION	L SUM	1	0.5	0.5

*= SPECIALTY ITEM

MODEL: Default
FILE: M:\GIS\Projects\GIS\Projects\DOT\Office\District 3\Project\03366171\CD\03366171\PLANS.dgn

USER NAME = woodshankri	DESIGNED -	REVISED -	STATE OF ILLINOIS DEPARTMENT OF TRANSPORTATION	SUMMARY OF QUANTITIES		F.A.I. RTE.	SECTION	COUNTY	TOTAL SHEETS	SHEET NO.	
PLOT SCALE = 100.0000' / in.	DRAWN -	REVISED -				80	32(1-4)PP	GRUNDY	20	3	
PLOT DATE = 2/28/2021	CHECKED -	REVISED +		SCALE:	SHEET 1 OF 2 SHEETS	STA.	TO STA.	ILLINOIS FED. AID PROJECT			
	DATE -	REVISED +									

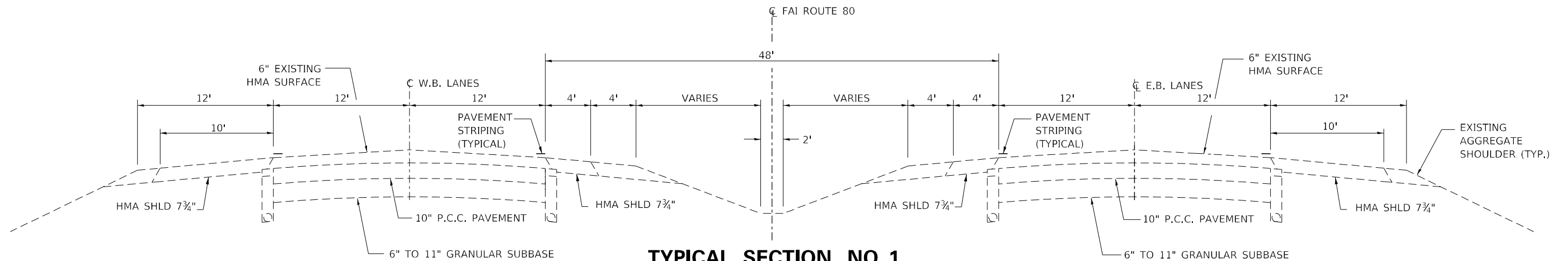
CONSTRUCTION CODE	
CONTRACT MAINTENANCE 100% STATE	
ROADWAY 0006 URBAN	ROADWAY 0006 RURAL

CODE NO.	ITEM	UNIT	TOTAL QUANTITY	ROADWAY 0006 URBAN	ROADWAY 0006 RURAL
70100420	TRAFFIC CONTROL AND PROTECTION, STANDARD 701411	EACH	4	4	
70100800	TRAFFIC CONTROL AND PROTECTION, STANDARD 701401	L SUM	1	0.5	0.5
70103815	TRAFFIC CONTROL SURVEILLANCE	CAL DA	16	11	5
70107025	CHANGEABLE MESSAGE SIGN	CAL DA	28	14	14
70200100	NIGHTTIME WORK ZONE LIGHTING	L SUM	1	0.5	0.5
* 78008210	POLYUREA PAVEMENT MARKING TYPE I - LINE 4"	FOOT	1030	555	475
* 78008230	POLYUREA PAVEMENT MARKING TYPE I - LINE 6"	FOOT	260	140	120
X2700001	TEMPORARY RUMBLE STRIPS (SPECIAL)	EACH	8	4	4
* Z0054408	ROCK FILL - SUBGRADE	CU YD	370	217	153

*= SPECIALTY ITEM

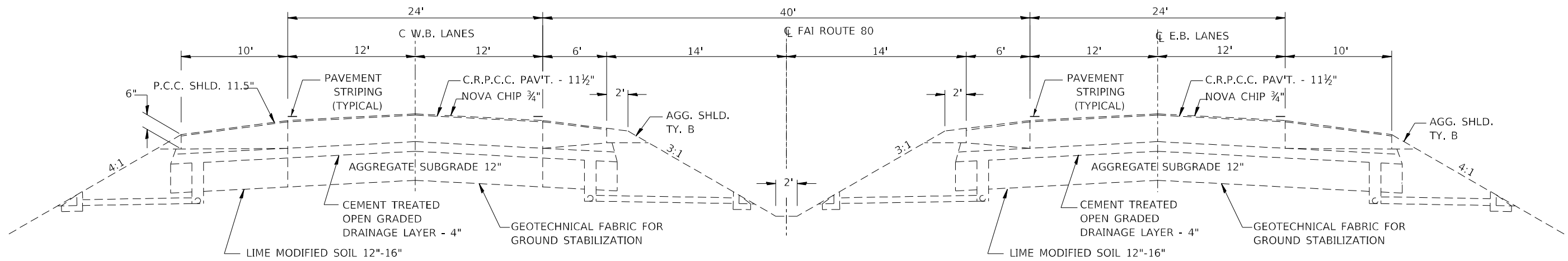
MODEL: Default
 FILE NAME: P:\p1ancom.dct\illinois.gov\PIV\DOT\Documents\DOT_Offices\District_3\project\03366171\CD\03366171\PLANS.dgn

USER NAME = woodshankri	DESIGNED -	REVISED -	STATE OF ILLINOIS DEPARTMENT OF TRANSPORTATION	SUMMARY OF QUANTITIES			F.A.I. RTE.	SECTION	COUNTY	TOTAL SHEETS	SHEET NO.
PLOT SCALE = 100.0000' / in.	DRAWN -	REVISED -					80	32(1-4)PP	GRUNDY	20	4
PLOT DATE = 2/28/2021	CHECKED -	REVISED +		SCALE: SHEET 2 OF 2 SHEETS STA. TO STA.			ILLINOIS FED. AID PROJECT CONTRACT NO. 66L77				
	DATE -	REVISED +									



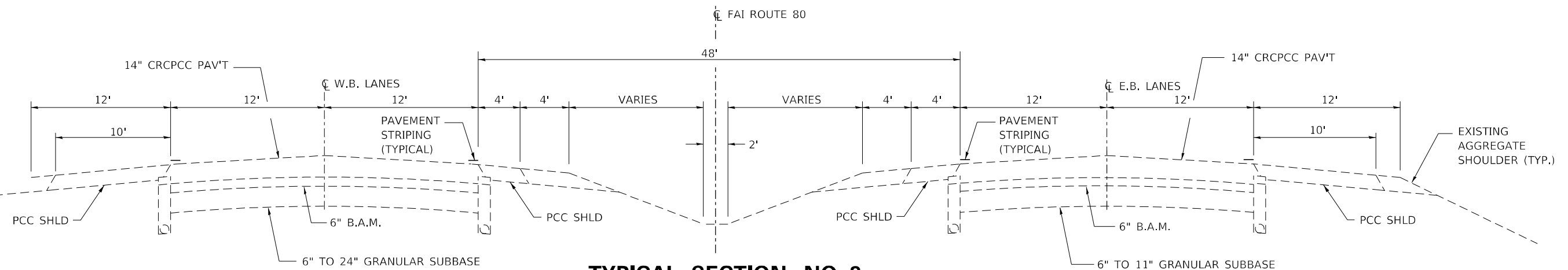
TYPICAL SECTION NO. 1

M.M. 102.99 TO M.M. 105.40
(GRUNDY COUNTY)



TYPICAL SECTION NO. 2

M.M. 105.40 TO M.M. 111.71
(GRUNDY COUNTY)



TYPICAL SECTION NO. 3

M.M. 111.71 TO M.M. 122.75
(GRUNDY COUNTY)

MODEL: Default
 FILE NAME: p:\pub\baronon.dwg
 PROJECT: ILLINOIS DOT OFFICE DISTRICT 3 PROJECT ID: 366171\CAD\DATA\10366171_P\LAHS.dwg

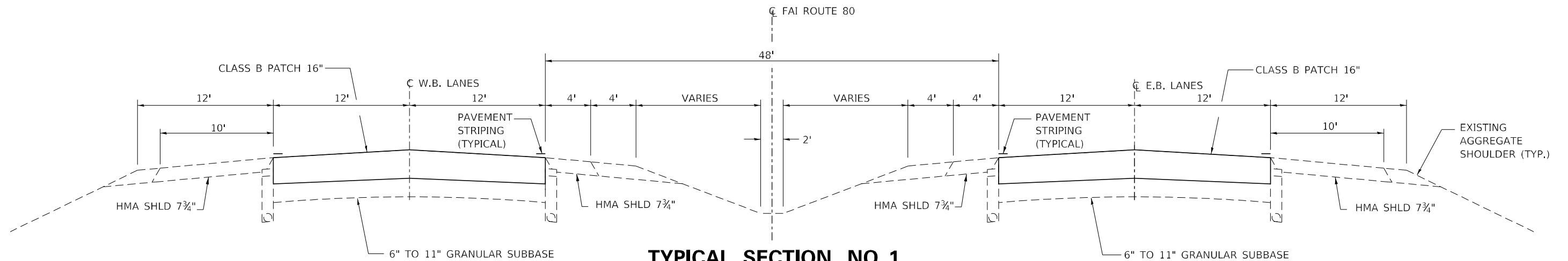
USER NAME = woodshank1	DESIGNED -	REVISED -
	DRAWN -	REVISED -
PLOT SCALE = 100,0000' / in.	CHECKED -	REVISED -
PLOT DATE = 2/28/2021	DATE -	REVISED -

**STATE OF ILLINOIS
DEPARTMENT OF TRANSPORTATION**

EXISTING TYPICAL SECTIONS

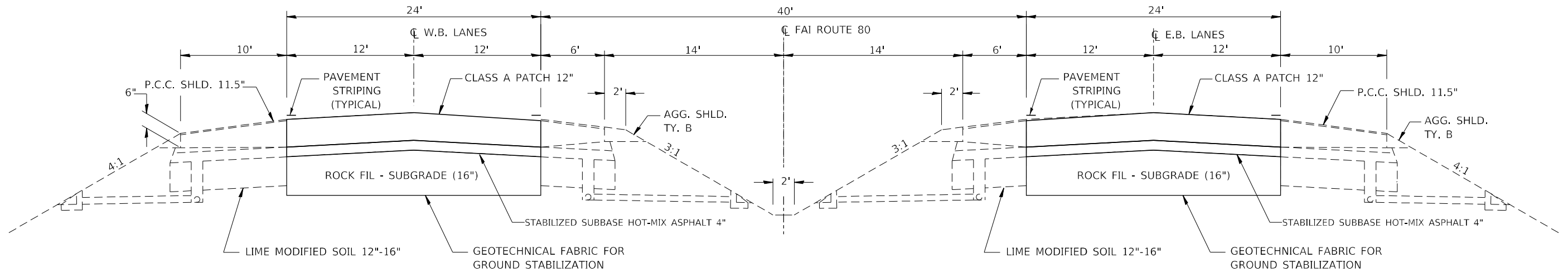
SCALE: SHEET 1 OF 2 SHEETS STA. TO STA.

F.A.I. RTE.	SECTION	COUNTY	TOTAL SHEETS	SHEET NO.
80	32(1-4)PP	GRUNDY	20	5
CONTRACT NO. 66L77				
ILLINOIS FED. AID PROJECT				



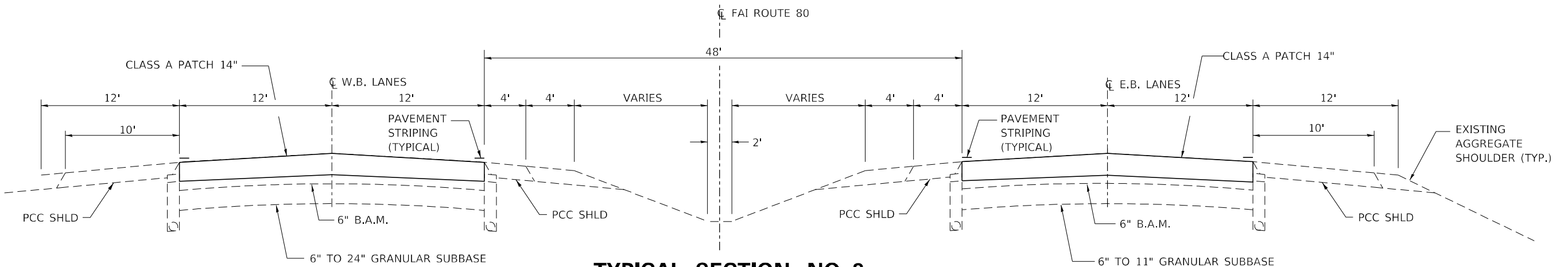
TYPICAL SECTION NO. 1

M.M. 102.99 TO M.M. 105.40
(GRUNDY COUNTY)



TYPICAL SECTION NO. 2

M.M. 105.40 TO M.M. 111.71
(GRUNDY COUNTY)



TYPICAL SECTION NO. 3

M.M. 111.71 TO M.M. 122.75
(GRUNDY COUNTY)

MODEL: Default
 FILE NAME: p:\pub\baronon.dwg
 PROJECT: ILLINOIS DOT OFFICE DISTRICT 3 PROJECT ID 366171 CADD DATA ID 366171 PLANS.dwg

USER NAME = woodshank1	DESIGNED -	REVISED -
	DRAWN -	REVISED -
PLOT SCALE = 100,0000' / in.	CHECKED -	REVISED -
PLOT DATE = 2/28/2021	DATE -	REVISED -

STATE OF ILLINOIS
DEPARTMENT OF TRANSPORTATION

PROPOSED TYPICAL SECTIONS AT PATCHING LOCATIONS

SCALE: SHEET 2 OF 2 SHEETS STA. TO STA.

F.A.I. RTE.	SECTION	COUNTY	TOTAL SHEETS	SHEET NO.
80	32(1-4)PP	GRUNDY	20	6
CONTRACT NO. 66L77				
ILLINOIS FED. AID PROJECT				

**PATCHING SCHEDULE
EASTBOUND LANES - RURAL**

LOCATION	PASSING LANE				DRIVING LANE			
	PATCH LENGTH	CLASS B PATCH TYPE II 16"	DOWEL BARS 1 1/2"	SAW CUTS	PATCH LENGTH	CLASS A PATCH TYPE II 16"	DOWEL BARS 1 1/2"	SAW CUTS
MILE MARKER	FEET	SQ YD	EACH	FOOT	FEET	SQ YD	EACH	FOOT
103.3					6	8	20	48
103.8					6	8	20	48
103.8					6	8	20	48
104.0	6	8	20	48				
104.3	6	8	20	48				
104.7					6	8	20	48
104.7					10	13	20	56
104.8					10	13	20	56
104.8					8	11	20	52
104.8					6	8	20	48
104.8					6	8	20	48
105.4					10	13	20	56
105.4					6	8	20	48
SUBTOTAL	12	16	40	96	80	106	220	556
PAGE 1 TOTAL	92	122	260	652				

MODEL: Default
 FILE NAME: \\paulhammon.dot.illinois.gov\PIWDOT\Documents\DOT_Offices\District 3\Projects\0366L77\CADD\0366L77_P1415.dgn

USER NAME = woodshank1	DESIGNED -	REVISED -
	DRAWN -	REVISED -
PLOT SCALE = 100,0000' / in.	CHECKED -	REVISED -
PLOT DATE = 5/6/2021	DATE -	REVISED -

**STATE OF ILLINOIS
DEPARTMENT OF TRANSPORTATION**

**SCHEDULES
EASTBOUND LANES**

SCALE: SHEET 1 OF 4 SHEETS STA. TO STA.

F.A.I. RTE.	SECTION	COUNTY	TOTAL SHEETS	SHEET NO.
80	32(1-4)PP	GRUNDY	20	7
			CONTRACT NO. 66L77	
ILLINOIS FED. AID PROJECT				

**PATCHING SCHEDULE
EASTBOUND LANES - RURAL**

LOCATION	PASSING LANE							DRIVING LANE								
	PATCH LENGTH	CLASS	A PATCHING			PATCH REINF.	SAW CUTS	TIE BARS 3/4"	PATCH LENGTH	CLASS	A PATCHING			PATCH REINF.	SAW CUTS	TIE BARS 3/4"
		TYPE II 12"	TYPE III 12"	TYPE IV 12"	TYPE II 12"					TYPE III 12"	TYPE IV 12"					
MILE MARKER	FEET	SQ YD	SQ YD	SQ YD	SQ YD	FOOT	EACH	FEET	SQ YD	SQ YD	SQ YD	SQ YD	FOOT	EACH		
105.6								12		16			16	48	44	
105.7	6	8				8	36	44								
105.7	6	8				8	36	44								
105.8									15		20			20	54	44
105.8	6	8				8	36	44								
105.9									20			27		27	64	50
105.9	6	8				8	36	44								
105.9									6	8			8	36	44	
106.0									10	13			13	44	44	
106.2	6	8				8	36	44								
106.3									6	8			8	36	44	
106.4									6	8			8	36	44	
106.5									20			27		27	64	50
106.6									10	13			13	44	44	
106.8	6	8				8	36	44								
107.0									6	8			8	36	44	
107.2									15		20		20	54	44	
107.3	6	8				8	36	44								
SUBTOTAL	42	56				56	252	308	126	58	56	54	168	516	496	
PAGE 1 TOTAL	168	114	56	54	224	768	804									

**PATCHING SCHEDULE
EASTBOUND LANES - URBAN**

LOCATION	PASSING LANE							DRIVING LANE								
	PATCH LENGTH	CLASS	A PATCHING			PATCH REINF.	SAW CUTS	TIE BARS 3/4"	PATCH LENGTH	CLASS	A PATCHING			PATCH REINF.	SAW CUTS	TIE BARS 3/4"
		TYPE II 12"	TYPE III 12"	TYPE IV 12"	TYPE II 12"					TYPE III 12"	TYPE IV 12"					
MILE MARKER	FEET	SQ YD	SQ YD	SQ YD	SQ YD	FOOT	EACH	FEET	SQ YD	SQ YD	SQ YD	SQ YD	FOOT	EACH		
107.4								8	11				11	40	44	
107.5								6	8				8	36	44	
107.8								6	8				8	36	44	
107.9								6	8				8	36	44	
108.3								6	8				8	36	44	
108.4								15		20			20	54	44	
108.6	8	11				11	40	44								
108.7								35			47		47	94	55	
108.7	8	11				11	40	44								
109.0								6	8				8	36	44	
109.0	6	8				8	36	44								
109.5								6	8				8	36	44	
110.0								6	8				8	36	44	
110.2								6	8				8	36	44	
110.3								6	8				8	36	44	
110.4								6	8				8	36	44	
110.9	15		20			20	54	44	15		20		20	54	44	
111.2	6	8				8	36	44								
111.3								10	13				13	44	44	
111.4								6	8				8	36	44	
SUBTOTAL	43	38	20			58	206	220	149	112	40	47	199	682	715	
PAGE 2 TOTAL	192	150	60	47	257	888	935									

MODEL: Default
 FILE NAME: p:\pub\amrnon.dwg
 PROJECT: P:\DOT\Documents\DOT - Office\Drawings\3\Projects\0366L71\CADD\0366L71_PLAN.dwg

USER NAME = woodshank1	DESIGNED -	REVISED -
	DRAWN -	REVISED -
PLOT SCALE = 100,0000' / in.	CHECKED -	REVISED -
PLOT DATE = 5/6/2021	DATE -	REVISED -

**STATE OF ILLINOIS
DEPARTMENT OF TRANSPORTATION**

**SCHEDULES
EASTBOUND LANES**

SCALE: SHEET 2 OF 4 SHEETS STA. TO STA.

F.A.I. RTE.	SECTION	COUNTY	TOTAL SHEETS	SHEET NO.
80	32(1-4)PP	GRUNDY	20	8
CONTRACT NO. 66L77				
ILLINOIS FED. AID PROJECT				

**SUBBASE / SUBGRADE SCHEDULE
EASTBOUND LANES - RURAL**

LOCATION	PASSING LANE					DRIVING LANE				
	PATCH LENGTH	REMOVAL AND DISPOSAL OF UNSUITABLE MATERIAL	GEOTECHNICAL FABRIC FOR GROUND STABILIZATION	ROCK FILL - SUBGRADE	STABILIZED SUBBASE HOT - MIX ASPHALT 4"	PATCH LENGTH	REMOVAL AND DISPOSAL OF UNSUITABLE MATERIAL	GEOTECHNICAL FABRIC FOR GROUND STABILIZATION	ROCK FILL - SUBGRADE	STABILIZED SUBBASE HOT - MIX ASPHALT 4"
MILE MARKER	FEET	CU YD	SQ YD	CU YD	SQ YD	FEET	CU YD	SQ YD	CU YD	SQ YD
105.6						12	7	16	7	16
105.7	6	4	8	4	8					
105.7	6	4	8	4	8					
105.8						15	9	20	9	20
105.8	6	4	8	4	8					
105.9						20	12	27	12	27
105.9	6	4	8	4	8					
105.9						6	4	8	4	8
106.0						10	6	13	6	13
106.2	6	4	8	4	8					
106.3						6	4	8	4	8
106.4						6	4	8	4	8
106.5						20	12	27	12	27
106.6						10	6	13	6	13
106.8	6	4	8	4	8					
107.0						6	4	8	4	8
107.2						15	9	20	9	20
107.3	6	4	8	4	8					
PAGE 1 SUBTOTAL	42	28	56	28	56	126	77	168	77	168
PAGE 1 TOTAL	168	105	224	105	224					

**SUBBASE / SUBGRADE SCHEDULE
EASTBOUND LANES - URBAN**

LOCATION	PASSING LANE					DRIVING LANE				
	PATCH LENGTH	REMOVAL AND DISPOSAL OF UNSUITABLE MATERIAL	GEOTECHNICAL FABRIC FOR GROUND STABILIZATION	ROCK FILL - SUBGRADE	STABILIZED SUBBASE HOT - MIX ASPHALT 4"	PATCH LENGTH	REMOVAL AND DISPOSAL OF UNSUITABLE MATERIAL	GEOTECHNICAL FABRIC FOR GROUND STABILIZATION	ROCK FILL - SUBGRADE	STABILIZED SUBBASE HOT - MIX ASPHALT 4"
MILE MARKER	FEET	CU YD	SQ YD	CU YD	SQ YD	FEET	CU YD	SQ YD	CU YD	SQ YD
107.4						8	5	11	5	11
107.5						6	4	8	4	8
107.8						6	4	8	4	8
107.9						6	4	8	4	8
108.3						6	4	8	4	8
108.4						15	9	20	9	20
108.6	8	5	11	5	11					
108.7						35	21	47	21	47
108.7	8	5	11	5	11					
109.0						6	4	8	4	8
109.0	6	4	8	4	8					
109.5						6	4	8	4	8
110.0						6	4	8	4	8
110.2						6	4	8	4	8
110.3						6	4	8	4	8
110.4						6	4	8	4	8
110.9	15	9	20	9	20					
111.2	6	4	8	4	8					
111.3						10	6	13	6	13
111.4						6	4	8	4	8
PAGE 1 SUBTOTAL	43	27	58	27	58	149	94	199	94	199
PAGE 1 TOTAL	192	121	257	121	257					

MODEL: Default
FILE NAME: p:\pub\mbaron\dot\illinois\dot\p\p\DOT\Documents\DOT_Offices\Distric 3\Projects\0366L77\CADD\0366L77_P\4145.dgn

USER NAME = woodshank1	DESIGNED -	REVISED -
	DRAWN -	REVISED -
PLOT SCALE = 100,0000' / in.	CHECKED -	REVISED -
PLOT DATE = 5/6/2021	DATE -	REVISED -

**STATE OF ILLINOIS
DEPARTMENT OF TRANSPORTATION**

**SCHEDULES
EASTBOUND LANES**

SCALE: SHEET 3 OF 4 SHEETS STA. TO STA.

F.A.I. RTE.	SECTION	COUNTY	TOTAL SHEETS	SHEET NO.
80	32(1-4)PP	GRUNDY	20	9
CONTRACT NO. 66L77				
ILLINOIS FED. AID PROJECT				

**PATCHING SCHEDULE
EASTBOUND LANES - RURAL**

LOCATION	PASSING LANE						DRIVING LANE					
	PATCH LENGTH	CLASS A PATCHING		PATCHING REINF.	SAW CUTS	TIE BARS 3/4"	PATCH LENGTH	CLASS A PATCHING		PATCHING REINF.	SAW CUTS	TIE BARS 3/4"
		TYPE II 14"	TYPE III 14"					TYPE II 14"	TYPE III 14"			
MILE MARKER	FEET	SQ YD	SQ YD	SQ YD	FOOT	EACH	FEET	SQ YD	SQ YD	SQ YD	FOOT	EACH
115.3	6	8		8	36	44						
115.5	8	11		11	40	44						
115.6	8	11		11	40	44						
115.6	6	8		8	36	44						
SUBTOTAL	28	38		38	152	176						
PAGE 1 TOTAL	28	38		38	152	176						

**PATCHING SCHEDULE
EASTBOUND LANES - URBAN**

LOCATION	PASSING LANE						DRIVING LANE					
	PATCH LENGTH	CLASS A PATCHING		PATCHING REINF.	SAW CUTS	TIE BARS 3/4"	PATCH LENGTH	CLASS A PATCHING		PATCHING REINF.	SAW CUTS	TIE BARS 3/4"
		TYPE II 14"	TYPE III 14"					TYPE II 14"	TYPE III 14"			
MILE MARKER	FEET	SQ YD	SQ YD	SQ YD	FOOT	EACH	FEET	SQ YD	SQ YD	SQ YD	FOOT	EACH
115.9	8	11		11	40	44						
116.1	6	8		8	36	44						
116.2	6	8		8	36	44						
117.9	6	8		8	36	44						
118.0	6	8		8	36	44						
118.0	6	8		8	36	44						
118.6	8	11		11	40	44						
119.8	8	11		11	40	44						
120.0	8	11		11	40	44						
120.3	6	8		8	36	44						
121.0	6	8		8	36	44						
121.2	6	8		8	36	44						
121.2	6	8		8	36	44						
121.5	12		16	16	48	44						
PAGE 2 SUBTOTAL	98	116	16	132	532	616						
PAGE 2 TOTAL	98	116	16	132	532	616						

MODEL: Default
 FILE NAME: p:\pub\amrnon.dwg
 PROJECT: P:\DOT\Documents\DOT_Offices\District_3\Projects\0366L77\0366L77_P1415.dwg

USER NAME = woodshank1	DESIGNED -	REVISED -
	DRAWN -	REVISED -
PLOT SCALE = 100,0000' / in.	CHECKED -	REVISED -
PLOT DATE = 5/6/2021	DATE -	REVISED -

**STATE OF ILLINOIS
DEPARTMENT OF TRANSPORTATION**

**SCHEDULES
EASTBOUND LANES**

SCALE: SHEET 4 OF 4 SHEETS STA. TO STA.

F.A.I. RTE.	SECTION	COUNTY	TOTAL SHEETS	SHEET NO.
80	32(1-4)PP	GRUNDY	20	10
CONTRACT NO. 66L77				
ILLINOIS FED. AID PROJECT				

**PATCHING SCHEDULE
WESTBOUND LANES - URBAN**

LOCATION	PASSING LANE						DRIVING LANE					
	PATCH LENGTH	CLASS A PATCHING		PATCH REINF.	SAW CUTS	TIE BARS 3/4"	PATCH LENGTH	CLASS A PATCHING		PATCH REINF.	SAW CUTS	TIE BARS 3/4"
		TYPE II 14"	TYPE III 14"					TYPE II 14"	TYPE III 14"			
MILE MARKER	FEET	SQ YD	SQ YD	SQ YD	FOOT	EACH	FEET	SQ YD	SQ YD	SQ YD	FOOT	EACH
122.5							12		16	16	48	44
122.5							6	8		8	36	44
121.8							6	8		8	36	44
121.6	6	8		8	36	44						
121.6							8	11		11	40	44
120.7							6	8		8	36	44
120.3							6	8		8	36	44
118.1	8	11		11	40	44						
117.9							6	8		8	36	44
116.1	6	8		8	36	44						
116.1							6	8		8	36	44
113.8	8	11		11	40	44						
113.5							6	9		9	40	44
113.0	6	8		8	36	44						
112.5	6	8		8	36	44						
111.7	6	8		8	36	44						
SUBTOTAL	46	62		62	260	308	62	68	16	84	344	396
PAGE 1 TOTAL	108	130	16	146	604	704						

MODEL: Default
 FILE NAME: p:\pub\mroom.dwg
 PROJECT: PWIDOT\Documents\DOT_Offices\District 3\Projects\0366L77\CADD\0366L77_PLANS.dwg

USER NAME = woodshank1	DESIGNED -	REVISED -
	DRAWN -	REVISED -
PLOT SCALE = 100,0000' / in.	CHECKED -	REVISED -
PLOT DATE = 5/6/2021	DATE -	REVISED -

**STATE OF ILLINOIS
DEPARTMENT OF TRANSPORTATION**

**SCHEDULES
WESTBOUND LANES**

SCALE: SHEET 1 OF 4 SHEETS STA. TO STA.

F.A.I. RTE.	SECTION	COUNTY	TOTAL SHEETS	SHEET NO.
80	32(1-4)PP	GRUNDY	20	11
			CONTRACT NO. 66L77	
ILLINOIS FED. AID PROJECT				

**PATCHING SCHEDULE
WESTBOUND LANES - URBAN**

LOCATION	PASSING LANE							DRIVING LANE								
	PATCH LENGTH	CLASS	A PATCHING			PATCH REINF.	SAW CUTS	TIE BARS 3/4"	PATCH LENGTH	CLASS	A PATCHING			PATCH REINF.	SAW CUTS	TIE BARS 3/4"
		TYPE II 12"	TYPE III 12"	TYPE IV 12"	TYPE II 12"					TYPE III 12"	TYPE IV 12"					
MILE MARKER	FEET	SQ YD	SQ YD	SQ YD	SQ YD	FOOT	EACH	FEET	SQ YD	SQ YD	SQ YD	SQ YD	FOOT	EACH		
111.5	20			27	27	64	50									
111.4	15		20		20	54	44									
111.3								10	13			13	44	44		
111.0								6	8			8	36	44		
110.9								6	8			8	36	44		
110.0	10	13			13	44	44									
109.9								10	13			13	44	44		
109.8	10	13			13	44	44									
109.8								8	11			11	40	44		
109.7								40			53	53	104	57		
108.8	6	8			8	36	44									
108.0								8	11			11	40	44		
107.9	8	11			11	40	44									
107.9								6	8			8	36	44		
PAGE 1 SUBTOTAL	69	45	20	27	92	282	270	88	72		53	125	380	365		
PAGE 1 TOTAL	157	117	20	80	217	662	635									

**PATCHING SCHEDULE
WESTBOUND LANES - RURAL**

LOCATION	PASSING LANE							DRIVING LANE								
	PATCH LENGTH	CLASS	A PATCHING			PATCH REINF.	SAW CUTS	TIE BARS 3/4"	PATCH LENGTH	CLASS	A PATCHING			PATCH REINF.	SAW CUTS	TIE BARS 3/4"
		TYPE II 12"	TYPE III 12"	TYPE IV 12"	TYPE II 12"					TYPE III 12"	TYPE IV 12"					
MILE MARKER	FEET	SQ YD	SQ YD	SQ YD	SQ YD	FOOT	EACH	FEET	SQ YD	SQ YD	SQ YD	SQ YD	FOOT	EACH		
107.0	6	8			8	36	44									
106.8								15		20		20	54	44		
106.7								6	8			8	36	44		
106.2								20			27	27	64	50		
105.8								6	8			8	36	44		
106.5	10	13			13	44	44									
106.5								8	11			11	40	44		
106.5								6	8			8	36	44		
PAGE 2 SUBTOTAL	16	21			21	80	88	61	35	20	27	82	266	270		
PAGE 2 TOTAL	77	56	20	27	103	346	358									

MODEL: Default
 FILE NAME: p:\pub\mranon.dwg
 PROJECT: 0366L77\CAD\DATA\0366L77_PLANES.dwg
 OFFICE: DISTRICT 3 PROJECTS

**SUBBASE/SUBGRADE SCHEDULE
WESTBOUND LANES - URBAN**

LOCATION	PASSING LANE					DRIVING LANE				
	PATCH LENGTH	REMOVAL AND DISPOSAL OF UNSUITABLE MATERIAL	GEOTECHNICAL FABRIC FOR GROUND STABILIZATION	ROCK FILL - SUBGRADE	STABILIZED SUBBASE HOT - MIX ASPHALT 4"	PATCH LENGTH	REMOVAL AND DISPOSAL OF UNSUITABLE MATERIAL	GEOTECHNICAL FABRIC FOR GROUND STABILIZATION	ROCK FILL - SUBGRADE	STABILIZED SUBBASE HOT - MIX ASPHALT 4"
MILE MARKER	FEET	CU YD	SQ YD	CU YD	SQ YD	FEET	CU YD	SQ YD	CU YD	SQ YD
111.5	20	12	27	12	27					
111.4	15	9	20	9	20					
111.3						10	6	13	6	13
111.0						6	4	8	4	8
110.9						6	4	8	4	8
110.0	10	6	13	6	13					
109.9						10	6	13	6	13
109.8	10	6	13	6	13					
109.8						8	5	11	5	11
109.7						40	24	53	24	53
108.8	6	4	8	4	8					
108.0						8	5	11	5	11
107.9	8	5	11	5	11					
107.9						6	4	8	4	8
PAGE 1 SUBTOTAL	69	42	92	42	92	88	54	117	54	117
PAGE 1 TOTAL	157	96	209	96	209					

**SUBBASE/SUBGRADE SCHEDULE
WESTBOUND LANES - RURAL**

LOCATION	PASSING LANE					DRIVING LANE				
	PATCH LENGTH	REMOVAL AND DISPOSAL OF UNSUITABLE MATERIAL	GEOTECHNICAL FABRIC FOR GROUND STABILIZATION	ROCK FILL - SUBGRADE	STABILIZED SUBBASE HOT - MIX ASPHALT 4"	PATCH LENGTH	REMOVAL AND DISPOSAL OF UNSUITABLE MATERIAL	GEOTECHNICAL FABRIC FOR GROUND STABILIZATION	ROCK FILL - SUBGRADE	STABILIZED SUBBASE HOT - MIX ASPHALT 4"
MILE MARKER	FEET	CU YD	SQ YD	CU YD	SQ YD	FEET	CU YD	SQ YD	CU YD	SQ YD
107.0	6	4	8	4	8					
106.8						15	9	20	9	20
106.7						6	4	8	4	8
106.2						20	12	27	12	27
105.8						6	4	8	4	8
106.5	10	6	13	6	13					
106.5						8	5	11	5	11
106.5						6	4	8	4	8
PAGE 1 SUBTOTAL	16	10	21	10	21	61	38	82	38	82
PAGE 1 TOTAL	77	48	103	48	103					

MODEL: Default
FILE NAME: P:\pub\mbaronm.dwt\Illinois\gov\PWDOT\Documents\DOT_Office\SubDir\refc_3\Projects\0366\71\CADD\0366L77_P1485.dgn

USER NAME = woodshank1	DESIGNED -	REVISED -
	DRAWN -	REVISED -
PLOT SCALE = 100,0000' / in.	CHECKED -	REVISED -
PLOT DATE = 5/6/2021	DATE -	REVISED -

**STATE OF ILLINOIS
DEPARTMENT OF TRANSPORTATION**

SCHEDULES WESTBOUND LANES			
SCALE:	SHEET 3	OF 4 SHEETS	STA. TO STA.

F.A.I. RTE.	SECTION	COUNTY	TOTAL SHEETS	SHEET NO.
80	32(1-4)PP	GRUNDY	20	13
CONTRACT NO. 66L77				
ILLINOIS FED. AID PROJECT				

PATCHING SCHEDULE WESTBOUND LANES - RURAL

LOCATION	PASSING LANE				DRIVING LANE			
	PATCH LENGTH	CLASS B PATCH TYPE II 16"	DOWEL BARS 1 1/2"	SAW CUTS	PATCH LENGTH	CLASS A PATCH TYPE II 16"	DOWEL BARS 1 1/2"	SAW CUTS
	MILE MARKER	FEET	SQ YD	EACH	FOOT	FEET	SQ YD	EACH
104.9	6	8	20	48				
104.5	6	8	20	48				
104.5					8	11	20	52
104.4	8	11	20	52				
104.2					8	11	20	52
104.2	6	8	20	48				
104.1	6	8	20	48				
103.9	10	13	20	56				
103.9					10	13	20	56
103.8					6	8	20	48
103.8	6	8	20	48				
103.7	6	8	20	48				
103.5	6	8	20	48				
103.3	6	8	20	48				
103.1	6	8	20	48				
103.1					6	8	20	48
SUBTOTAL	72	96	220	540	38	51	100	256
PAGE 1 TOTAL	110	147	320	796				

MODEL: Default
 FILE NAME: p:\pub\lansroom.dwg
 PROJECT: P:\DOT\Documents\DOT - Office\Distric 3\Projects\0366L71\CADD\0366L71_P1415.dwg

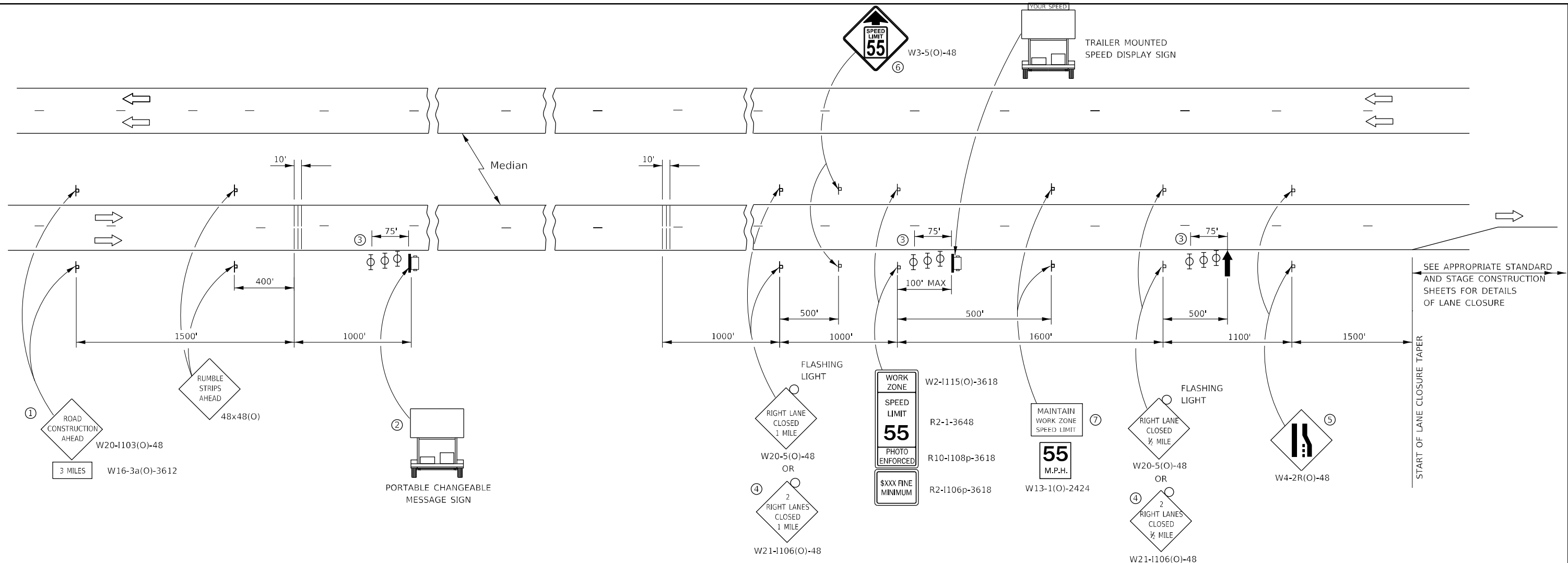
USER NAME = woodshank1	DESIGNED -	REVISED -
	DRAWN -	REVISED -
PLOT SCALE = 100,0000' / in.	CHECKED -	REVISED -
PLOT DATE = 5/6/2021	DATE -	REVISED -

**STATE OF ILLINOIS
DEPARTMENT OF TRANSPORTATION**

**SCHEDULES
WESTBOUND LANES**

SCALE: SHEET 4 OF 4 SHEETS STA. TO STA.

F.A.I. RTE.	SECTION	COUNTY	TOTAL SHEETS	SHEET NO.
80	32(1-4)PP	GRUNDY	20	14
			CONTRACT NO. 66L77	
ILLINOIS FED. AID PROJECT				



SYMBOLS

- ARROW BOARD
- PORTABLE CHANGEABLE MESSAGE SIGN
- SIGN
- TYPE II BARRICADE, DRUM, OR VERTICAL BARRICADE WITH MONODIRECTIONAL FLASHING LIGHT
- TEMPORARY RUMBLE STRIPS (SEE SPECIAL PROVISION)

- ① THE ROAD CONSTRUCTION AHEAD SIGN SHALL BE LOCATED 3 MILES IN ADVANCE OF THE PROJECT LIMITS.
- ② TO BE PLACED IN THE MEDIAN WHEN FEASIBLE. THE MESSAGE BOARD SHALL BE USED TO DISPLAY STATUS OF LANES WITHIN THE PROJECT. THE PRIMARY MESSAGES SHALL BE:
"RIGHT LANE CLOSED" / " x MILES AHEAD"
"LEFT LANE CLOSED" / " x MILES AHEAD"
"ALL LANES OPEN"
- ③ THREE, TYPE II BARRICADES, DRUMS, OR VERTICAL BARRICADES AT 25' CENTERS.
- ④ THIS SIGN SHALL BE USED WHEN 2 LANES ARE CLOSED.
- ⑤ WHEN THE LEFT LANE IS CLOSED, SWITCH THESE TWO SIGNS AND THE DIRECTION OF THE MERGE ARROW.
- ⑥ THIS SIGN SHALL ONLY BE USED IF THE EXISTING SPEED LIMIT IS GREATER THAN 65 MPH.

- ⑦ 48"x36" FLUORESCENT ORANGE SIGN WITH BLACK LETTERS.
48"
36" MAINTAIN WORK ZONE SPEED LIMIT 8" 6" 6"
COST OF THIS ADDITIONAL SIGN SHALL BE INCLUDED IN THIS STANDARD

GENERAL NOTE:

THIS STANDARD IS USED WHERE AT ANY TIME A LANE IS CLOSED ON A FREEWAY/EXPRESSWAY. WHEN THE LEFT LANE IS CLOSED, LEFT LANE CLOSED SIGNS SHALL BE SUBSTITUTED FOR THE RIGHT LAND CLOSED SIGNS.

THE FIRST TWO SIGNS, BOTH SETS OF RUMBLE STRIPS AND MESSAGE BOARD ARE STATIONARY.

THE LAST FIVE SIGNS AND ARROW BOARD SHALL BE MOVED AS NECESSARY TO MAINTAIN THE REQUIRED DISTANCE FROM THE START OF THE LANE CLOSURE TAPER(S).

MODEL: Default
FILE NAME: p:\pub\mroom.dwt\illinois.gov\PIWDOT\Documents\DOT_Offices\District_3\Projects\0366\71\CAD\Drawings\0366L77_P448.dwg

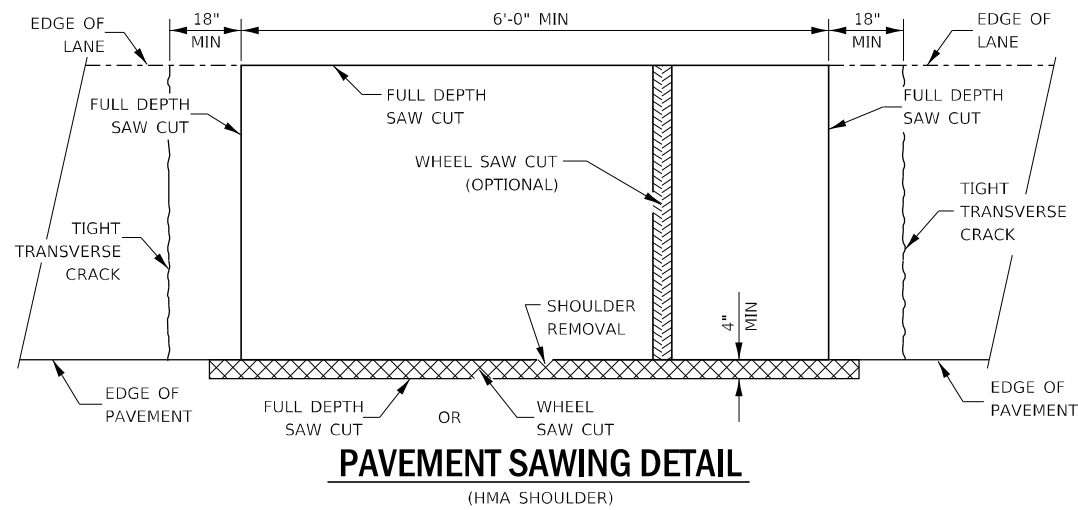
USER NAME = woodshank1	DESIGNED -	REVISED -
	DRAWN -	REVISED -
PLOT SCALE = 100,0000' / in.	CHECKED -	REVISED -
PLOT DATE = 2/28/2021	DATE -	REVISED -

**STATE OF ILLINOIS
DEPARTMENT OF TRANSPORTATION**

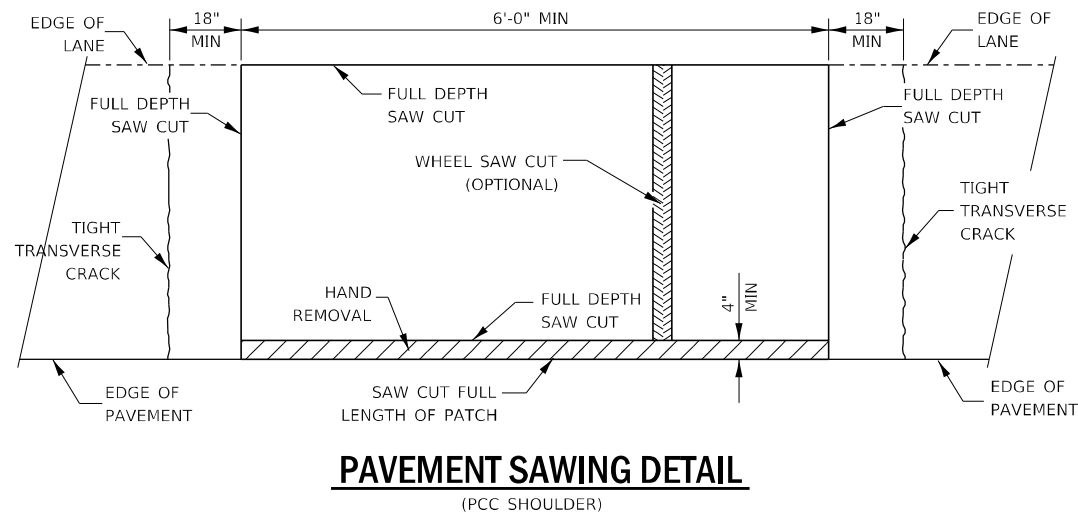
TRAFFIC CONTROL AND PROTECTION, STANDARD 701400

SCALE: SHEET 4 OF 4 SHEETS STA. TO STA.

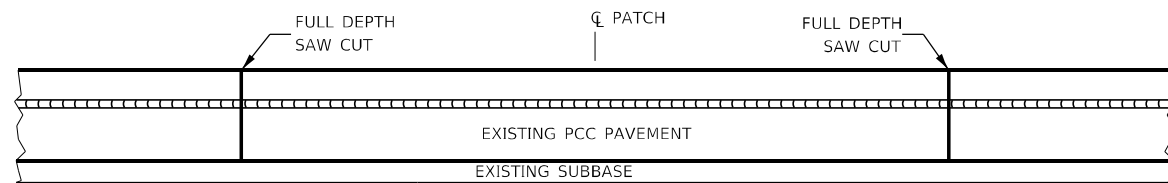
F.A.I. RTE.	SECTION	COUNTY	TOTAL SHEETS	SHEET NO.
80	32(1-4)PP	GRUNDY	20	15
CONTRACT NO. 66L77				
ILLINOIS FED. AID PROJECT				



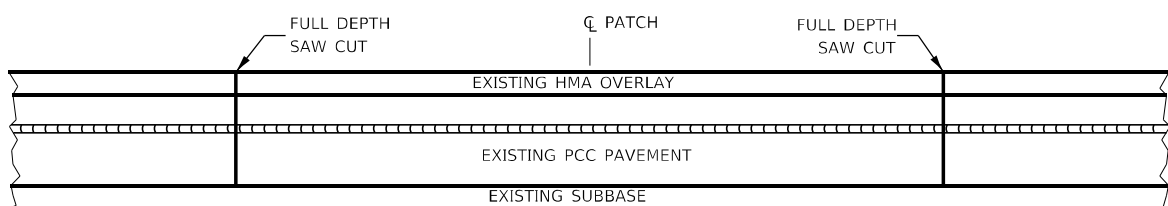
PAVEMENT SAWING DETAIL
(HMA SHOULDER)



PAVEMENT SAWING DETAIL
(PCC SHOULDER)

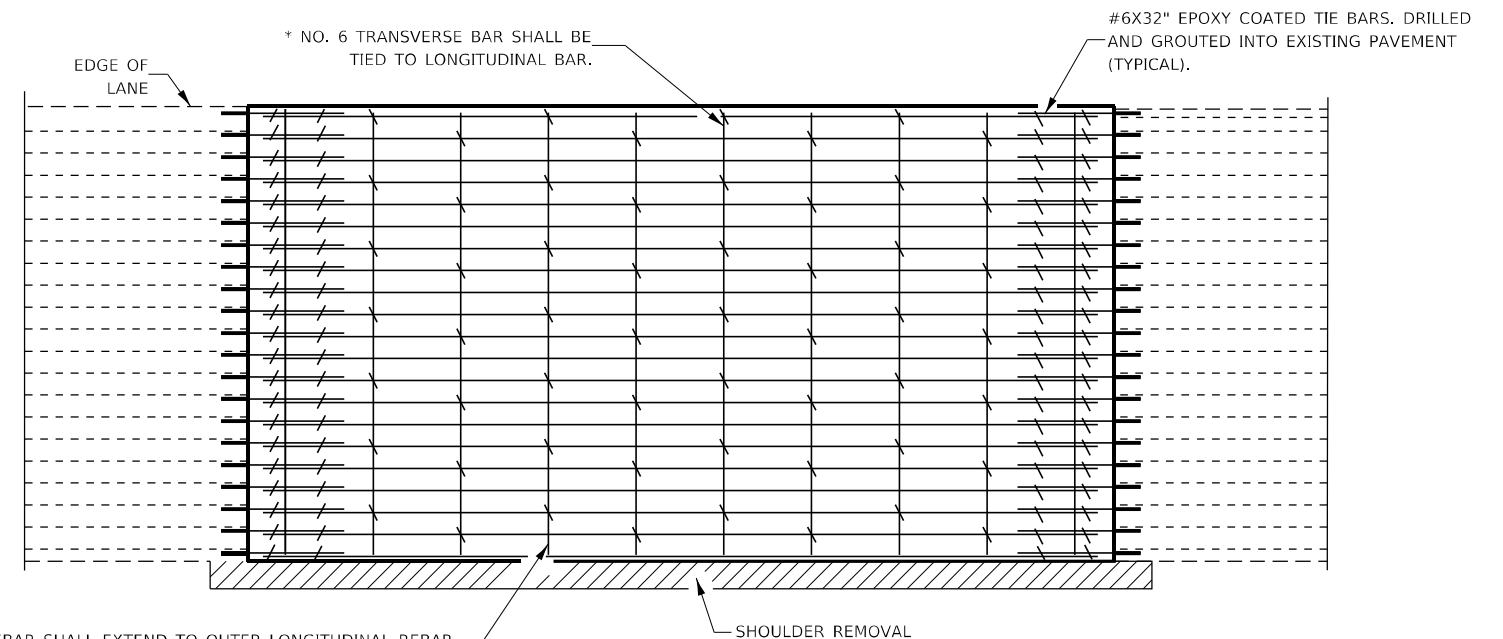


EXISTING PAVEMENT WITHOUT HMA SURFACE



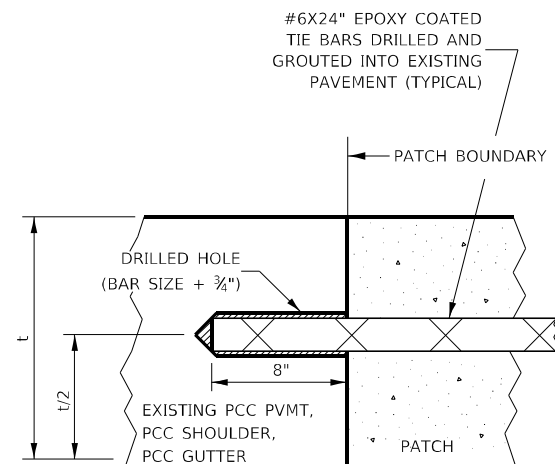
EXISTING PAVEMENT WITH HMA SURFACE

PAVEMENT SAWING DETAIL FOR CLASS A PATCHING
(CRC PAVEMENT)



PAVEMENT REINFORCEMENT DETAIL

TRANSVERSE REBAR SHALL EXTEND TO OUTER LONGITUDINAL REBAR WHILE PROVIDING A MINIMUM 3" CLEARANCE FROM EXISTING PAVEMENT EDGE



LONGITUDINAL CONSTRUCTION JOINT

PATCHES MORE THAN 20' IN LENGTH SHALL BE TIED TO ADJACENT PAVEMENT, PCC SHOULDERS OR PCC CURB AND GUTTER WITH #6X24" EPOXY COATED TIE BARS AT 36" CENTERS.

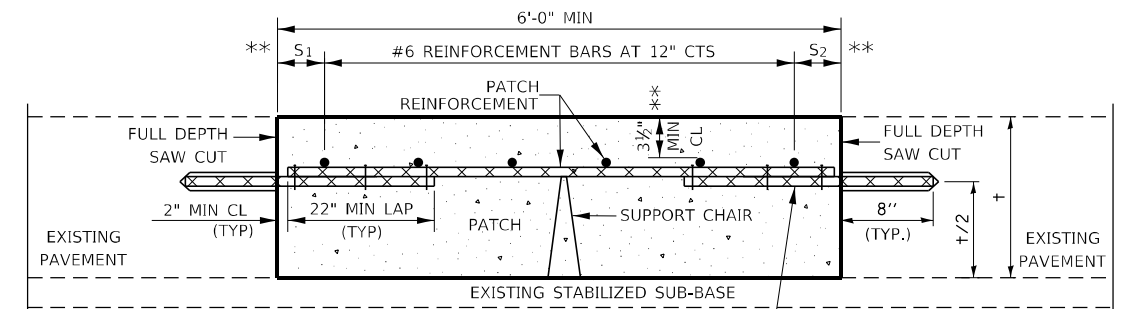
NOTES:

EXISTING LONGITUDINAL REINFORCEMENT SPACING: ±6".

SPACING OF NEW LONGITUDINAL REINFORCEMENT AND NEW LONGITUDINAL TIE BARS SHALL MATCH SPACING OF EXISTING REINFORCEMENT AND SHALL BE TIED TOGETHER WITH A MINIMUM OF TWO TIES PER BAR.

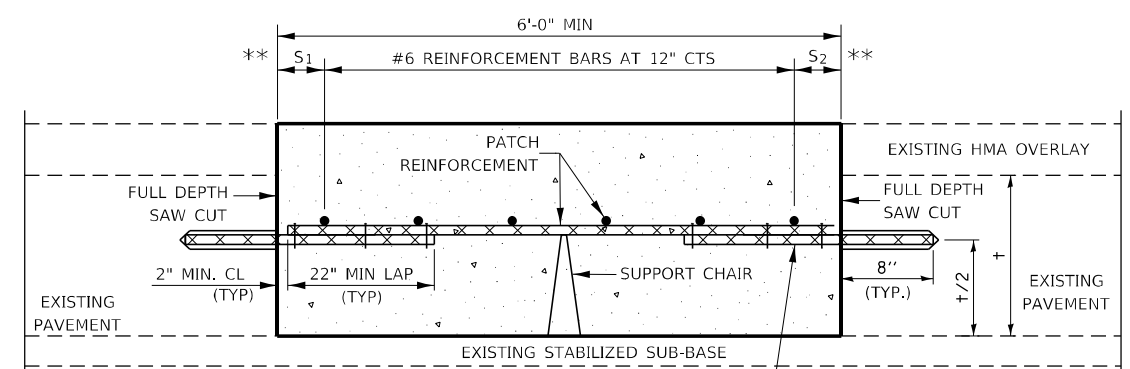
* EVERY THIRD INTERSECTION MUST BE TIED. WHEN THE MINIMUM CLEARANCE CANNOT BE OBTAINED WITH THE TRANSVERSE REBAR ON TOP, THEN THE TRANSVERSE REBAR SHALL BE TIED TO THE BOTTOM OF THE LONGITUDINAL REBAR.

** VARIABLE: WHERE S₁ AND S₂ ARE 2 1/2" MIN. AND 12" MAX.



WITHOUT HMA OVERLAY

#6X32" EPOXY COATED TIE BARS DRILLED AND GROUTED INTO EXISTING PAVEMENT (TYPICAL)



WITH HMA OVERLAY

#6X32" EPOXY COATED TIE BARS DRILLED AND GROUTED INTO EXISTING PAVEMENT (TYPICAL)

PATCHING DETAIL FOR CLASS A PATCHING
(CRC PAVEMENT)

MODEL: Default
FILE NAME: pavementsurround.dwg
PROJECT: PWDOT\Documents\DOT Office\District 3\Projects\03366171\CADD\03366171_P\LAHS.dwg

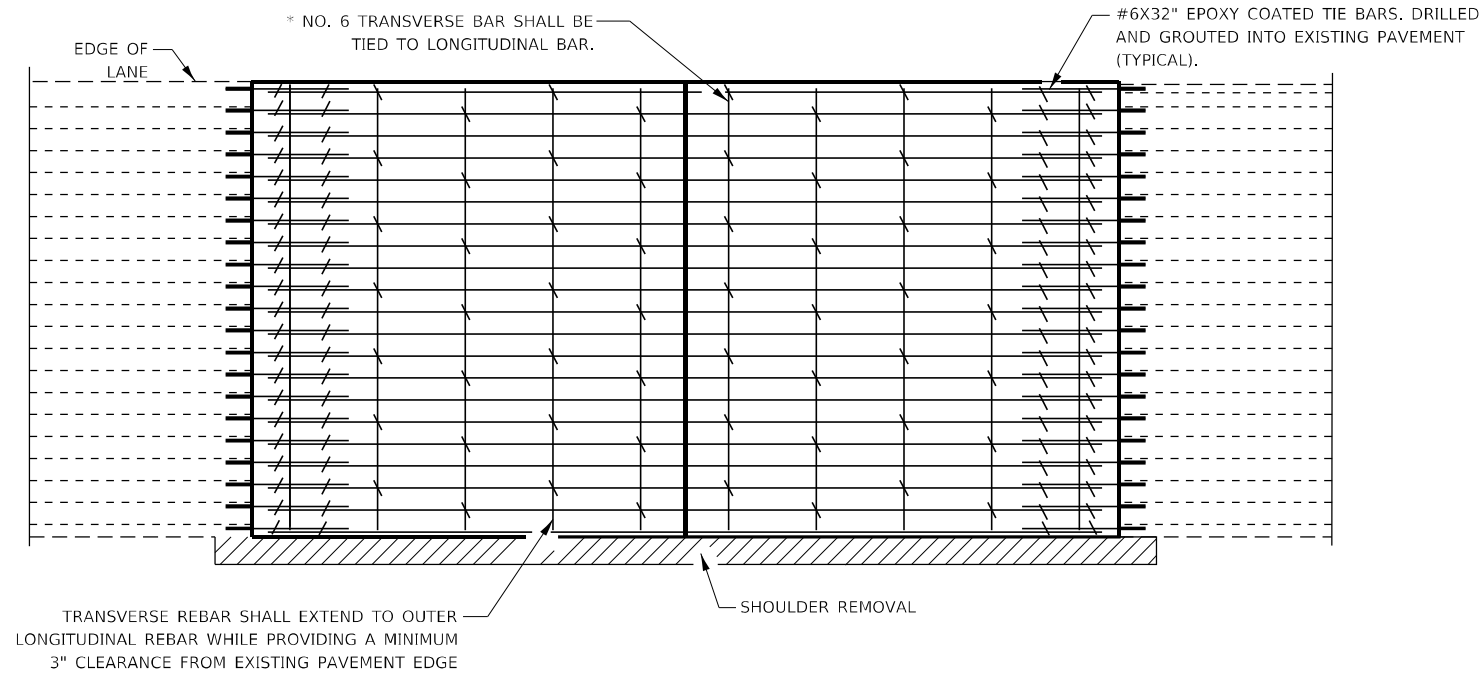
USER NAME = woodshank1	DESIGNED -	REVISED -
PLOT SCALE = 100,0000' / in.	DRAWN -	REVISED -
PLOT DATE = 2/28/2021	CHECKED -	REVISED -
	DATE -	REVISED -

STATE OF ILLINOIS
DEPARTMENT OF TRANSPORTATION

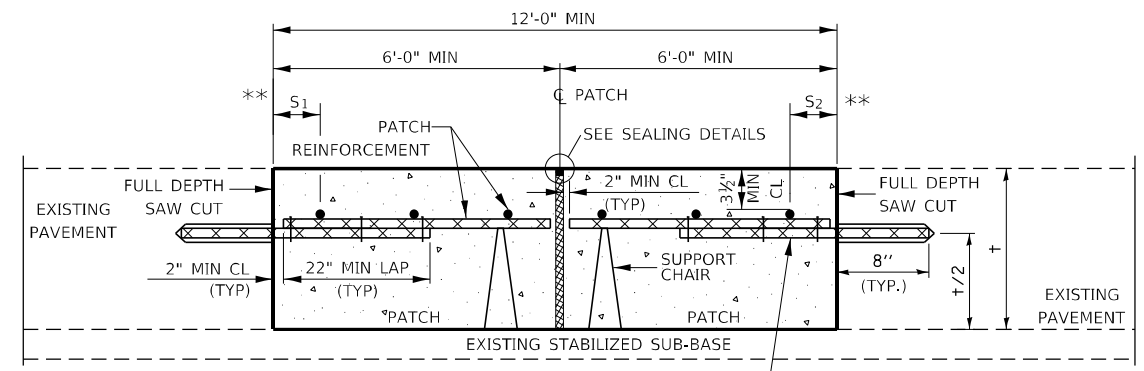
CLASS A PATCHING

SCALE: SHEET 1 OF 2 SHEETS STA. TO STA.

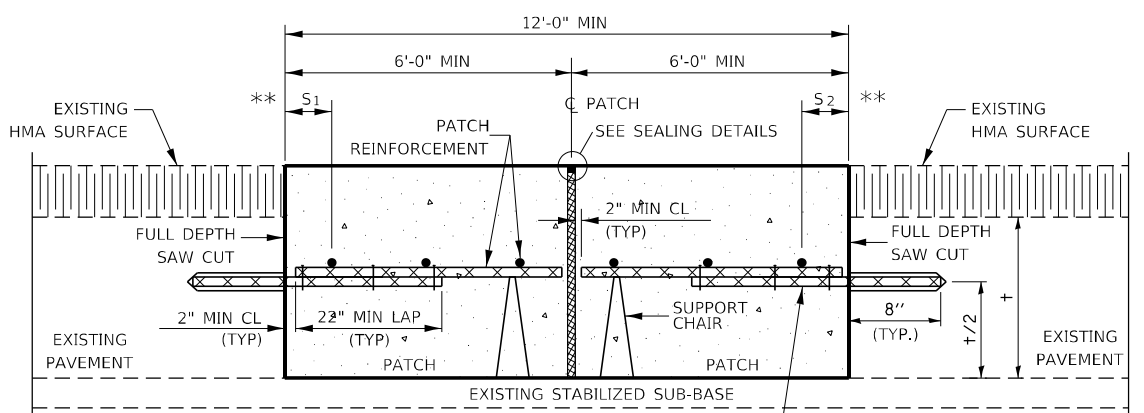
F.A.I. RTE.	SECTION	COUNTY	TOTAL SHEETS	SHEET NO.
80	32(1-4)PP	GRUNDY	20	16
CONTRACT NO. 66L77				
ILLINOIS FED. AID PROJECT				



PAVEMENT REINFORCEMENT DETAIL

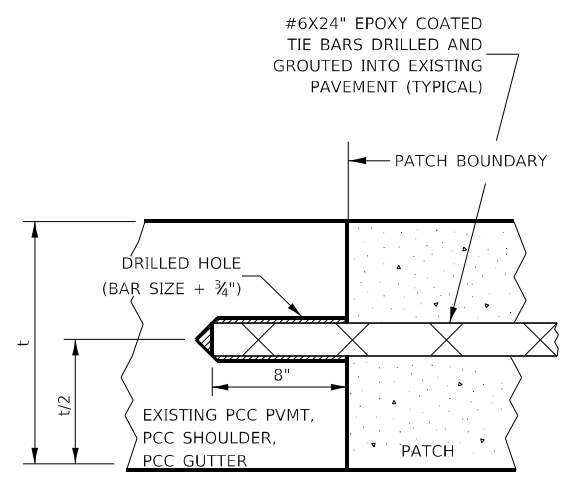


WITHOUT HMA OVERLAY



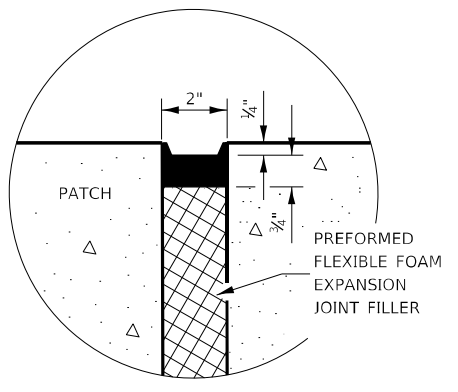
WITH HMA OVERLAY

CLASS A PATCH WITH EXPANSION JOINT

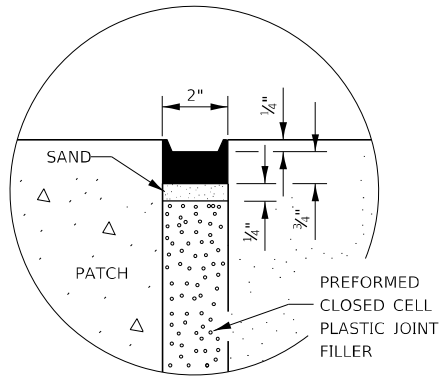


LONGITUDINAL CONSTRUCTION JOINT

PATCHES MORE THAN 20' IN LENGTH SHALL BE TIED TO ADJACENT PAVEMENT, PCC SHOULDERS OR PCC CURB AND GUTTER WITH #6x24" EPOXY COATED TIE BARS AT 36" CENTERS.



SEALING DETAIL



SEALING DETAIL

- NOTES:**
- EXISTING LONGITUDINAL REINFORCEMENT SPACING; 4".
 - SPACING OF NEW LONGITUDINAL REINFORCEMENT AND NEW LONGITUDINAL TIE BARS SHALL MATCH SPACING OF EXISTING REINFORCEMENT AND SHALL BE TIED TOGETHER WITH A MINIMUM OF TWO TIES PER BAR.
 - SUPPORT CHAIRS SHALL BE REQUIRED WHENEVER PATCH LENGTH EXCEEDS 6'-0"
 - * EVERY THIRD INTERSECTION MUST BE TIED. WHEN THE MINIMUM CLEARANCE CANNOT BE OBTAINED WITH THE TRANSVERSE REBAR ON TOP, THEN THE TRANSVERSE REBAR SHALL BE TIED TO THE BOTTOM OF THE LONGITUDINAL REBAR.
 - ** VARIABLES WHERE S₁ AND S₂ ARE 2 1/2" MIN. AND 12" MAX.

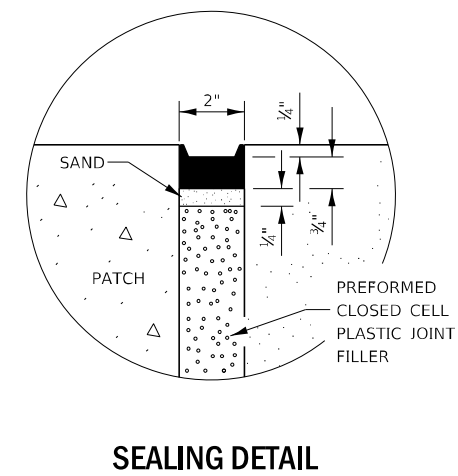
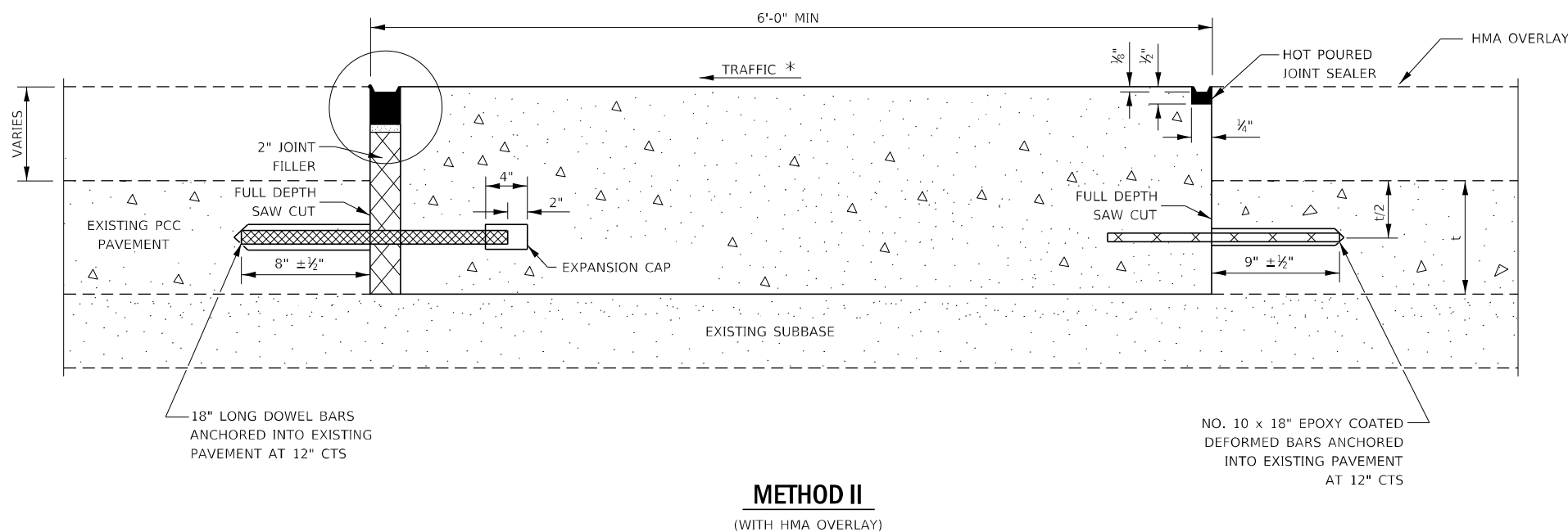
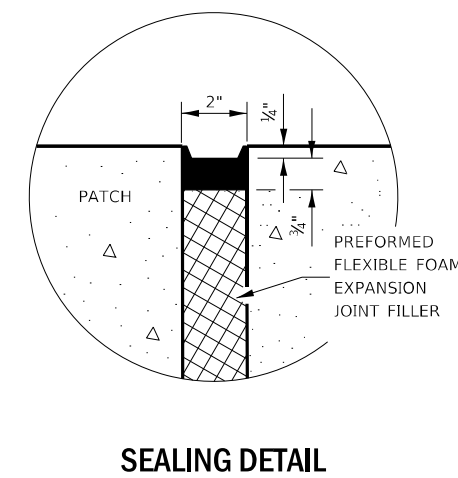
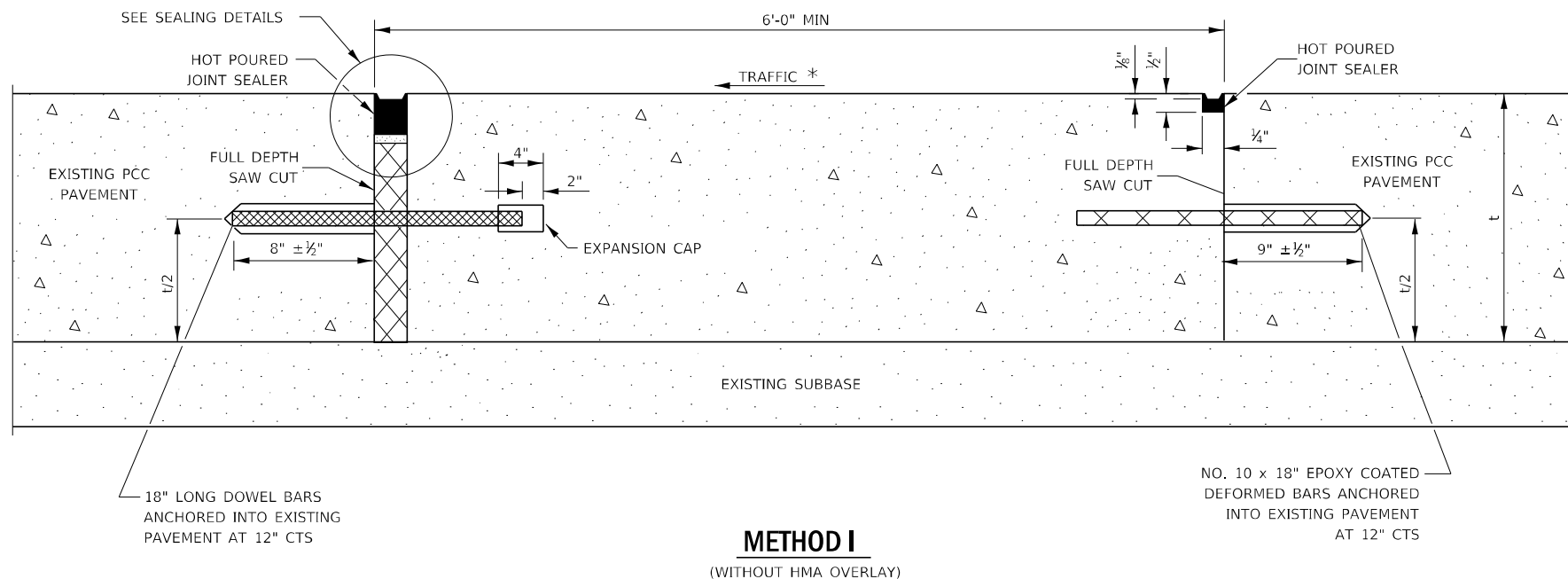
MODEL: Default FILE NAME: pavementsystem.dwg PROJECT: PWDOT/Document/31807/Office/31807/31807.dwg

USER NAME = woodshank1	DESIGNED -	REVISED -
	DRAWN -	REVISED -
PLOT SCALE = 100,0000' / in.	CHECKED -	REVISED -
PLOT DATE = 2/28/2021	DATE -	REVISED -

**STATE OF ILLINOIS
DEPARTMENT OF TRANSPORTATION**

CLASS A PATCHING	
SCALE:	SHEET 2 OF 2 SHEETS STA. TO STA.

F.A.I. RTE.	SECTION	COUNTY	TOTAL SHEETS	SHEET NO.
80	32(1-4)PP	GRUNDY	20	17
CONTRACT NO. 66L77				
ILLINOIS FED. AID PROJECT				



NOTE

* WHEN RE-ESTABLISHING A TRANSVERSE EXPANSION JOINT ON A TWO-WAY ROAD, REVERSE THE ORIENTATION OF THE DOWEL BARS WITH RESPECT TO TRAFFIC FOR ONE OF THE PATCHES SUCH THAT THE JOINT WILL BE CONTINUOUS ACROSS BOTH LANES.

MODEL: Default
 FILE NAME: public\baronson.dwt\illinois.gov\PIWDOT\Documents\DOT_Offices\Distrcfct_3\Projects\0366L77\0366L77_P\418.dgn

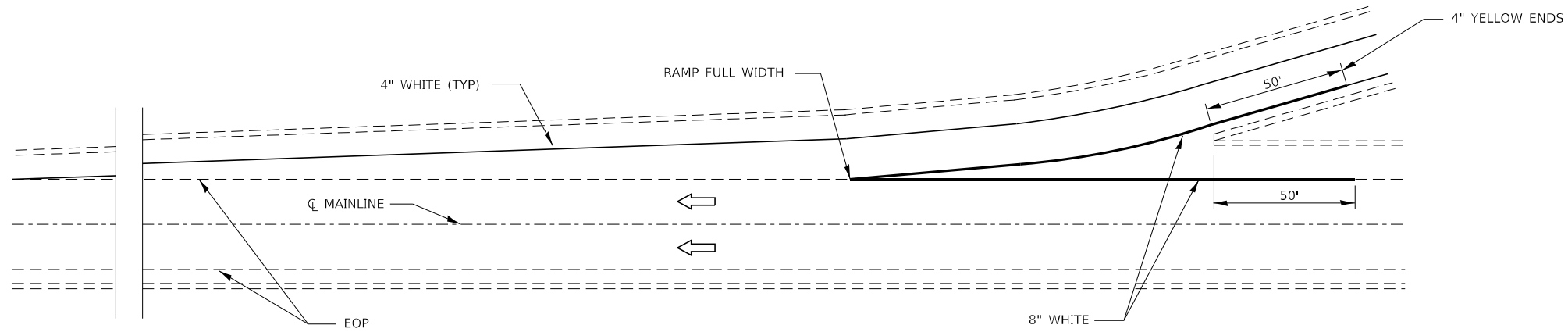
USER NAME = woodshank1	DESIGNED -	REVISED -
	DRAWN -	REVISED -
PLOT SCALE = 100,0000' / in.	CHECKED -	REVISED -
PLOT DATE = 2/28/2021	DATE -	REVISED -

STATE OF ILLINOIS
DEPARTMENT OF TRANSPORTATION

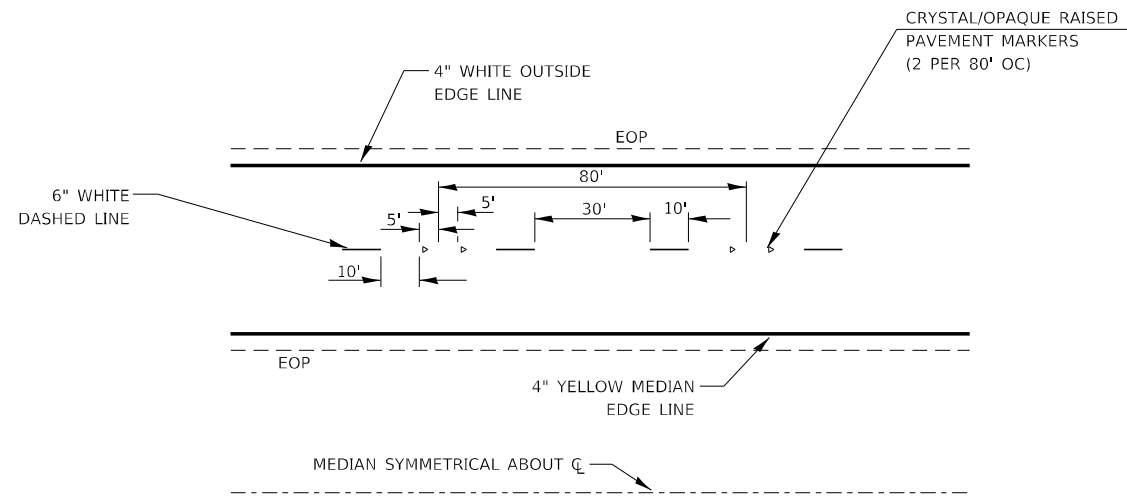
CLASS B PATCHING

SCALE: SHEET 2 OF 2 SHEETS STA. TO STA.

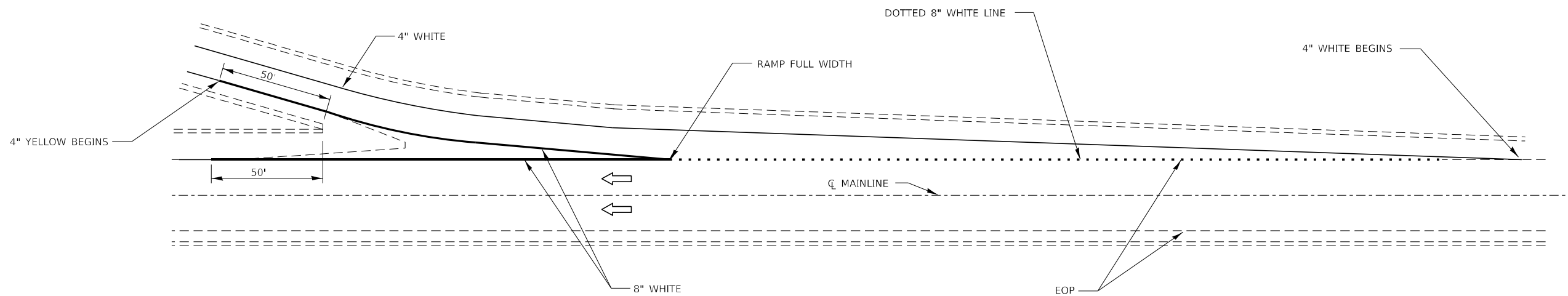
F.A.I. RTE.	SECTION	COUNTY	TOTAL SHEETS	SHEET NO.
80	32(1-4)PP	GRUNDY	20	19
			CONTRACT NO. 66L77	
ILLINOIS FED. AID PROJECT				



TYPICAL PAVEMENT MARKING FOR ENTRANCE RAMP TERMINALS



TYPICAL PAVEMENT MARKINGS



TYPICAL PAVEMENT MARKINGS FOR EXIT RAMP TERMINALS

MODEL: Default
 FILE NAME: p:\pub\harrington.dwg
 PROJECT: ILLINOIS DOT - OFFICE OF DISTRICT 3 PROJECTS
 CADD DATA: D:\366L77\PLANS.dwg

USER NAME = woodshank1	DESIGNED -	REVISED -
	DRAWN -	REVISED -
PLOT SCALE = 100,0000' / in.	CHECKED -	REVISED -
PLOT DATE = 2/28/2021	DATE -	REVISED -

**STATE OF ILLINOIS
DEPARTMENT OF TRANSPORTATION**

PAVEMENT MARKING

SCALE: SHEET 1 OF 1 SHEETS STA. TO STA.

F.A.I. RTE.	SECTION	COUNTY	TOTAL SHEETS	SHEET NO.
80	32(1-4)PP	GRUNDY	20	20
CONTRACT NO. 66L77				
ILLINOIS FED. AID PROJECT				