

STATE OF ILLINOIS
DEPARTMENT OF TRANSPORTATION

FAU RTE	SECTION	COUNTY	TOTAL SHEETS	SHEET NO.
1360	2020-085-R5	COOK	19	1
		ILLINOIS	CONTRACT NO. 62L63	

FOR INDEX OF SHEETS, SEE SHEET NO. 2

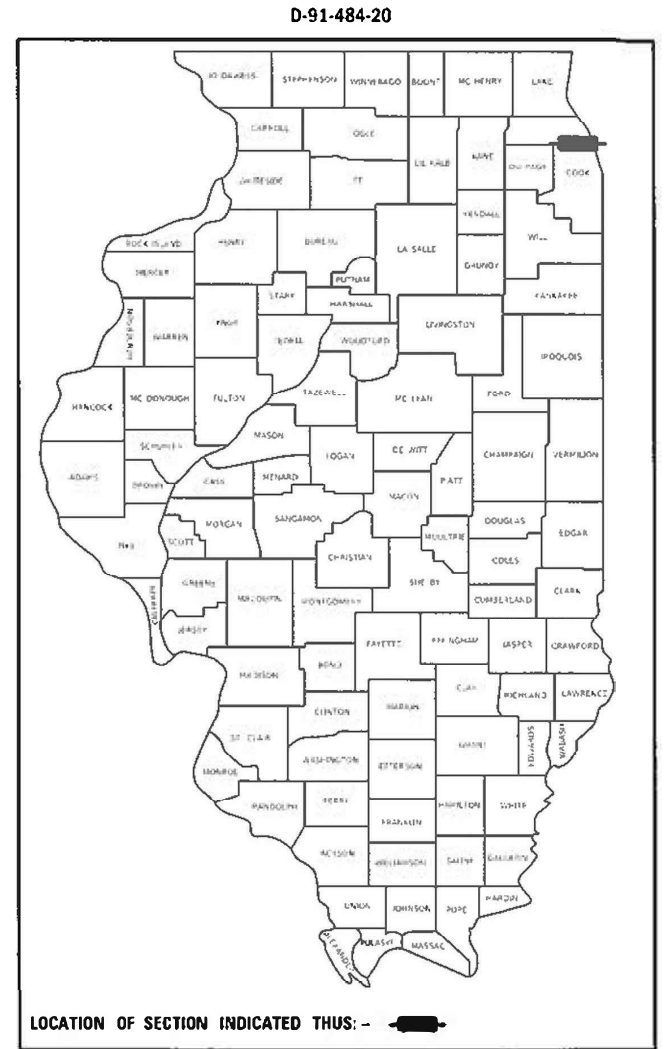
THIS PROJECT IS LOCATED
IN THE CITY OF CHICAGO

TRAFFIC DATA
EXISTING ADT = 16000 (2019)
POSTED SPEED LIMIT = 25-30 MPH

PROPOSED HIGHWAY PLANS

FAU ROUTE 1360: US 41/FOSTER AVENUE
ASHLAND AVE TO US 41 (LAKE SHORE DR)
SECTION: 2020-085-R5
PROJECT: STP-GWOA(851)
SMART OVERLAY
COOK COUNTY

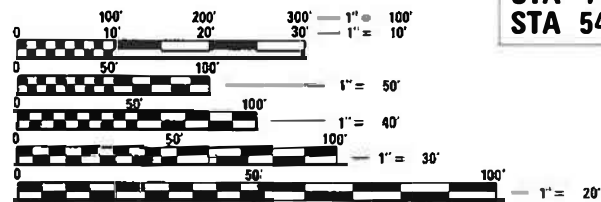
C-91-282-20



PROJECT BEGINS
STA 12+90

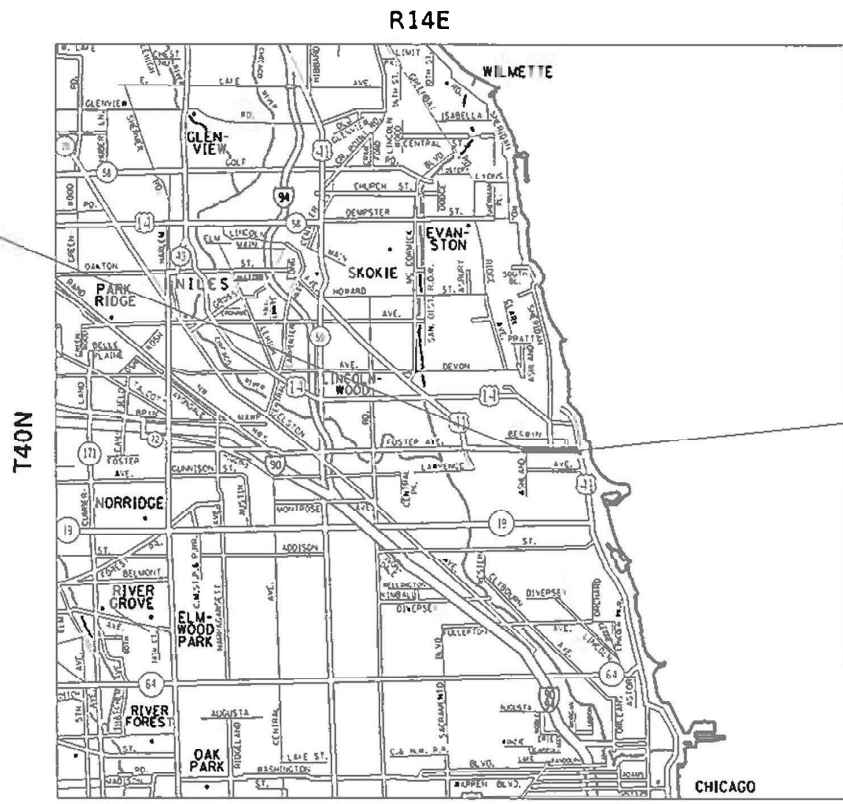
OMISSION
STA 39+85 TO STA 42+48
STA 44+50 TO STA 47+23
STA 54+47 TO STA 55+77

PROJECT ENDS
STA 69+30



FULL SIZE PLANS HAVE BEEN PREPARED USING STANDARD
ENGINEERING SCALES. REDUCED SIZED PLANS WILL NOT
CONFORM TO STANDARD SCALES. IN MAKING MEASUREMENTS
ON REDUCED PLANS, THE ABOVE SCALES MAY BE USED.

C.U.A.N. - CHICAGO UTILITY ALERT NETWORK
312-744-7000



LAKEVIEW TOWNSHIP

PROJECT MANAGER: J. ALAIN MIDY (847) 221-3056

GROSS LENGTH = 5640 FT. = 1.068 MILE
NET LENGTH = 4974 FT. = 0.94 MILE

CONTRACT NO. 62L63

STATE OF ILLINOIS
DEPARTMENT OF TRANSPORTATION

SUBMITTED March 9, 2021
Jose Pinos / CAS
REGIONAL ENGINEER

May 7, 2021
[Signature]
ENGINEER OF DESIGN AND ENVIRONMENT

May 7, 2021
[Signature]
DIRECTOR OF HIGHWAYS PROJECT IMPLEMENTATION 13

PRINTED BY THE AUTHORITY
OF THE STATE OF ILLINOIS

GENERAL NOTES

1. BEFORE STARTING ANY EXCAVATION, THE CONTRACTOR SHALL CALL "C.U.A.N." (CHICAGO UTILITY ALERT NETWORK) AT (312) 744-7000 FOR FIELD LOCATIONS OF BURIED ELECTRIC, TELEPHONE AND GAS UTILITIES. (48 HOUR NOTIFICATION IS REQUIRED).
2. THE CONTRACTOR SHALL COORDINATE CONSTRUCTION ACTIVITIES WITH UTILITY COMPANIES AND THE CITY OF CHICAGO.
3. THE CONTRACTOR WILL NOT BE ALLOWED TO SET UP A YARD OR FIELD OFFICE ON STATE PROPERTY WITHOUT WRITTEN PERMISSION FROM THE DEPARTMENT.
4. BEFORE BEGINNING ANY WORK, THE CONTRACTOR SHALL RETAIN AND RECORD FOR FUTURE REFERENCE, ALL EXISTING PAVEMENT MARKING LINES (AND RAISED REFLECTIVE PAVEMENT MARKERS) IN ORDER THAT THESE LOCATIONS CAN BE RE-ESTABLISHED FOR STRIPING. EXACT LOCATIONS OF ALL PAVEMENT MARKINGS SHALL BE AS DIRECTED BY THE ENGINEER.
5. ALL PAVEMENT PATCHING LOCATIONS, LOCATION OF COMBINATION CONCRETE CURB AND GUTTER REMOVAL AND REPLACEMENT, DRAINAGE ADJUSTMENT OR RECONSTRUCTION LOCATIONS, SIDEWALK REMOVAL AND P.C.C. SIDEWALK 5" LOCATIONS WILL BE DETERMINED IN THE FIELD BY THE ENGINEER.
6. IT SHALL BE THE CONTRACTOR'S RESPONSIBILITY TO VERIFY ALL DIMENSIONS AND CONDITIONS EXISTING IN THE FIELD PRIOR TO CONSTRUCTION AND ORDERING OF MATERIALS.
7. THE CONTRACTOR SHALL CONTACT THE DISTRICT ONE TRAFFIC CONTROL SUPERVISOR AT KALPANA.KANNAN-HOSADURGA@ILLINOIS.GOV A MINIMUM OF 72 HOURS IN ADVANCE OF BEGINNING WORK.
8. THE ENGINEER SHALL CONTACT MS. PATRICE HARRIS, AREA TRAFFIC FIELD ENGINEER, AT (708) 597-9800 A MINIMUM OF TWO WEEKS PRIOR TO THE PLACEMENT OF PERMANENT PAVEMENT MARKINGS.
9. THESE PLANS HAVE BEEN PREPARED FROM NOTES RECEIVED FROM THE BUREAU OF CONSTRUCTION.
10. THE CONTRACTOR SHALL BE REQUIRED TO PROVIDE ACCESS TO ABUTTING PROPERTY AT ALL TIMES DURING THE CONSTRUCTION OF THIS PROJECT.
11. DO NOT SCALE PLANS FOR CONSTRUCTION DIMENSIONS.
12. BUTT JOINTS WILL BE INSTALLED AT THE ENDS OF ALL RESURFACING (WHERE RESURFACING MEETS EXISTING PAVEMENT) ACCORDING TO THE "BUTT JOINT AND HOT-MIX ASPHALT TAPER DETAILS" SHEET INCLUDED IN THE PLANS, UNLESS OTHERWISE SPECIFIED.
13. CITY OF CHICAGO CASTINGS ARE THE PROPERTY OF THE CITY OF CHICAGO AND THE CONTRACTOR SHALL NOTIFY THE CITY FOR REMOVAL AND DISPOSITION OF THE CASTINGS.
14. WHEN THE MILLED PAVEMENT IS OPEN TO TRAFFIC THE MAXIMUM GRADE DIFFERENTIAL BETWEEN PASSES OF THE MILLING MACHINE SHALL NOT EXCEED 1 1/2 INCHES (40 mm) WHERE THE SPEED LIMIT IS 40 MPH (80 km/h) OR LESS AND 1 INCH (25 mm) WHERE THE SPEED LIMIT IS GREATER THAN 40 MPH (80 km/h). WITH WRITTEN APPROVAL OF THE ENGINEER, A MAXIMUM GRADE DIFFERENTIAL OF 3 INCHES (75 mm) MAY BE ALLOWED IF THE EDGE OF THE MILLING IS SLOPED A MINIMUM 1:3 (V:H) OR A NOTCHED LONGITUDINAL WEDGE IS USED.
15. PERMITS FROM THE DEPARTMENT OF WATER MANAGEMENT ARE REQUIRED FOR ALL UNDERGROUND STORM, SANITARY OR COMBINED SEWER SYSTEM CONSTRUCTION, AND FOR RESURFACING WORK INVOLVING ADJUSTMENT OF SEWER STRUCTURES. THE DEPARTMENT OF WATER MANAGEMENT' PERMIT MUST BE OBTAINED BY A LICENSED SEWER DRAIN LAYER PRIOR TO START OF CONSTRUCTION.
16. PERFORATED LIDS SHALL BE PLACED ON ALL MANHOLES AND CATCH BASINS.
17. ALL BROKEN, CRACKED, WORN OR OTHERWISE DAMAGED OR BICYCLE UNSAFE FRAMES AND LIDS ON SEWER STRUCTURES, SHALL BE REPLACED WITH NEW DEPARTMENT OF SEWERS' STANDARD FRAMES AND LIDS.
18. OPEN LID DRAINAGE STRUCTURES SHALL NOT BE CLOSED, COVERED OR OTHERWISE OBSTRUCTED DURING CONSTRUCTION OF THIS ROADWAY WITHOUT THE WRITTEN PERMISSION FROM THE CITY OF CHICAGO.

INDEX OF SHEETS

SHEET NO.	DESCRIPTION
1	COVER SHEET
2	INDEX OF SHEETS, STANDARDS, AND GENERAL NOTES
3-4	SUMMARY OF QUANTITIES
5	EXISTING & PROPOSED TYPICAL SECTIONS
6-8	ROADWAY & PAVEMENT MARKINGS PLANS
9	DETAILS FOR FRAMES AND LIDS ADJUSTMENT WITH MILLING (BD-08)
10	PAVEMENT PATCHING FOR HMA SURFACED PAVEMENT (BD-22)
11	CURB OR CURB AND GUTTER REMOVAL AND REPLACEMENT (BD-24)
12	BUTT JOINT AND HMA TAPER DETAILS (BD-32)
13	TRAFFIC CONTROL AND PROTECTION FOR SIDE ROADS, INTERSECTIONS, AND DRIVEWAYS (TC-10)
14	TRAFFIC CONTROL AND PROTECTION AT TURN BAYS (TO REMAIN OPEN TO TRAFFIC) (TC-14)
15	SHORT TERM PAVEMENT MARKING LETTERS AND SYMBOLS (TC-16)
16	ARTERIAL ROAD INFORMATION SIGN (TC-22)
17	DISTRICT 1 - DETECTOR LOOP INSTALLATION DETAILS FOR ROADWAY RESURFACING (TS-07)
18-20	CITY OF CHICAGO TYPICAL PAVEMENT MARKINGS (TC-24)

LIST OF STATE STANDARDS

STANDARD NO.	DESCRIPTION
000001-08	STANDARD SYMBOLS, ABBREVIATIONS AND PATTERNS
442201-03	CLASS C AND D PATCHES
604001-05	FRAME AND LIDS, TYPE 1
606001-07	COMBINATION CONCRETE CURB AND GUTTER
701101-05	OFF-ROAD OPERATIONS, MULTILANE, 15' TO 2' FROM PAVEMENT EDGE
701301-04	LANE CLOSURE, 2L, 2W, SHORT TIME OPERATIONS
701311-03	LANE CLOSURE 2L, 2W, MOVING OPERATIONS, DAY ONLY
701427-05	LANE CLOSURE, MULTILANE, INTERMITTENT OR MOVING OPERATION, FOR SPEED < 40 MPH
701602-10	URBAN LANE CLOSURE, MULTILANE, 2W WITH BIDIRECTIONAL LEFT TURN LANE
701611-01	URBAN LANE CLOSURE, MULTILANE, 2W WITH MOUNTABLE MEDIAN
701606-10	URBAN HALF ROAD CLOSURE, MULTILANE, 2W WITH MOUNTABLE MEDIAN
701701-10	URBAN LANE CLOSURE, MULTILANE INTERSECTION
701801-06	LANE CLOSURE, MULTILANE 1W OR 2W CROSSWALK OR SIDEWALK CLOSURE
701901-08	TRAFFIC CONTROL DEVICES

SUMMARY OF QUANTITIES			URBAN TOTAL QUANTITIES	CONSTRUCTION TYPE CODE					SUMMARY OF QUANTITIES			URBAN TOTAL QUANTITIES	CONSTRUCTION TYPE CODE				
CODE NO	ITEM	UNIT		0005 80% FED 20% STATE	0005 100% STATE					CODE NO	ITEM		UNIT	0005 80% FED 20% STATE	0005 100% STATE		
40600290	BITUMINOUS MATERIALS (TACK COAT)	POUND	11650	11650					44201771	CLASS D PATCHES, TYPE IV, 10 INCH	SO YD	80	80				
40600400	MIXTURE FOR CRACKS, JOINTS, AND FLANGEWAYS	TON	39	39					60300305	FRAMES AND LIDS TO BE ADJUSTED	EACH	60	60				
40600982	HOT-MIX ASPHALT SURFACE REMOVAL - BUTT JOINT	SO YD	480	480					67000400	ENGINEER'S FIELD OFFICE, TYPE A	CAL MO	6	6				
40601005	HOT-MIX ASPHALT REPLACEMENT OVER PATCHES	TON	37	37					67100100	MOBILIZATION	L SUM	1	1				
40604172	POLYMERIZED HOT-MIX ASPHALT SURFACE COURSE, IL-9.5, MIX "E", N70	TON	2548	2548					70102625	TRAFFIC CONTROL AND PROTECTION, STANDARD 701606	L SUM	1	1				
42001300	PROTECTIVE COAT	SO YD	135	135					70102632	TRAFFIC CONTROL AND PROTECTION, STANDARD 701602	L SUM	1	1				
42400200	PORTLAND CEMENT CONCRETE SIDEWALK 5 INCH	SO FT	600	600					70102634	TRAFFIC CONTROL AND PROTECTION, STANDARD 701611	L SUM	1	1				
44000156	HOT-MIX ASPHALT SURFACE REMOVAL, 1 3/4"	SO YD	26000	26000					70102635	TRAFFIC CONTROL AND PROTECTION, STANDARD 701701	L SUM	1	1				
44000600	SIDEWALK REMOVAL	SO FT	600	600					70102640	TRAFFIC CONTROL AND PROTECTION, STANDARD 701801	L SUM	1	1				
44002216	HOT-MIX ASPHALT REMOVAL OVER PATCHES, 4"	SO YD	165	165					70300100	SHORT TERM PAVEMENT MARKING	FOOT	3800	3800				
44201765	CLASS D PATCHES, TYPE II, 10 INCH	SO YD	20	20					70300150	SHORT TERM PAVEMENT MARKING REMOVAL	SO FT	1270	1270				
44201769	CLASS D PATCHES, TYPE III, 10 INCH	SO YD	40	40					70300210	TEMPORARY PAVEMENT MARKING LETTERS AND SYMBOLS	SO FT	246.7	246.7				
									70300220	TEMPORARY PAVEMENT MARKING - LINE 4"	FOOT	6000	6000				

FILE NAME =	USER NAME = gulliamerp	DESIGNED -	REVISED -
pw:\planroom\dtd\illinois\gov\PI\DOT\Documents\DOT	Files\District\Projects\0148420\CAD\Date\Design\0148420-3	DRAWN -	REVISED -
	PLOT SCALE = 100.0000' / 1"	CHECKED -	REVISED -
	PLOT DATE = 3/19/2021	DATE -	REVISED -

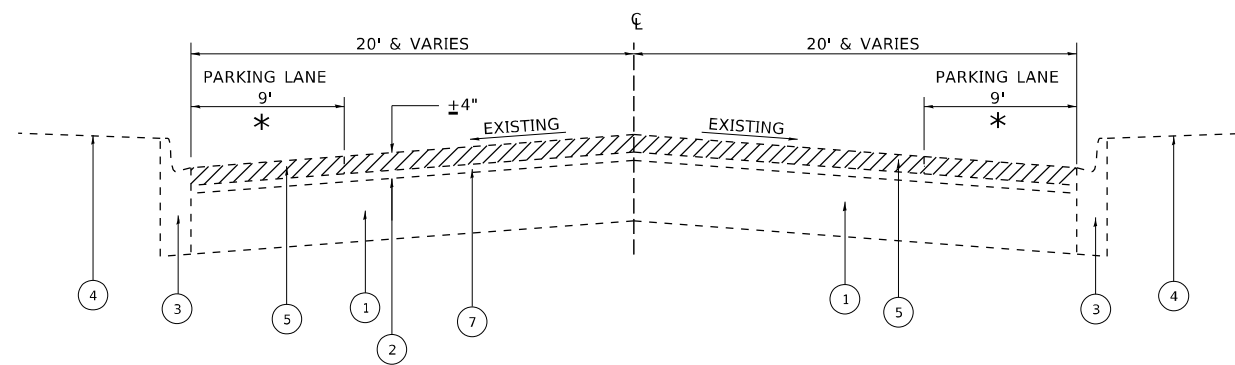
**STATE OF ILLINOIS
DEPARTMENT OF TRANSPORTATION**

**US 41/FOSTER AVE. (ASHLAND AVE. TO US 41(LAKE SHORE DR.))
SUMMARY OF QUANTITIES**

F.A.U. RTE.	SECTION	COUNTY	TOTAL SHEETS	SHEET NO.
1360	2020-085-R5	COOK	19	3
CONTRACT NO. 62L63				
SCALE: SHEET NO. OF SHEETS STA. TO STA. FED. ROAD DIST. NO. 1 ILLINOIS FED. AID PROJECT				

SUMMARY OF QUANTITIES			URBAN TOTAL QUANTITIES	CONSTRUCTION TYPE CODE					
CODE NO	ITEM	UNIT		0005 80% FED 20% STATE	0005 100% STATE				
70300240	TEMPORARY PAVEMENT MARKING - LINE 6"	FOOT	550	550					
70300260	TEMPORARY PAVEMENT MARKING - LINE 12"	FOOT	150	150					
70300280	TEMPORARY PAVEMENT MARKING - LINE 24"	FOOT	2520	2520					
70300520	PAVEMENT MARKING TAPE, TYPE III 4"	FOOT	1900	1900					
• 78000100	THERMOPLASTIC PAVEMENT MARKING - LETTERS AND SYMBOLS	SO FT	246.7	246.7					
• 78000200	THERMOPLASTIC PAVEMENT MARKING - LINE 4"	FOOT	6000	6000					
• 78000400	THERMOPLASTIC PAVEMENT MARKING - LINE 6"	FOOT	550	550					
• 78000600	THERMOPLASTIC PAVEMENT MARKING - LINE 12"	FOOT	150	150					
• 78000650	THERMOPLASTIC PAVEMENT MARKING - LINE 24"	FOOT	2520	2520					
X4400501	COMBINATION CONCRETE CURB AND GUTTER REMOVAL AND REPLACEMENT EQUAL TO OR LESS THAN 10 FEET	FOOT	80	80					
X5537800	STORM SEWERS TO BE CLEANED 12"	FOOT	150	150					
X7030005	TEMPORARY PAVEMENT MARKING REMOVAL	SO FT	8740	8740					

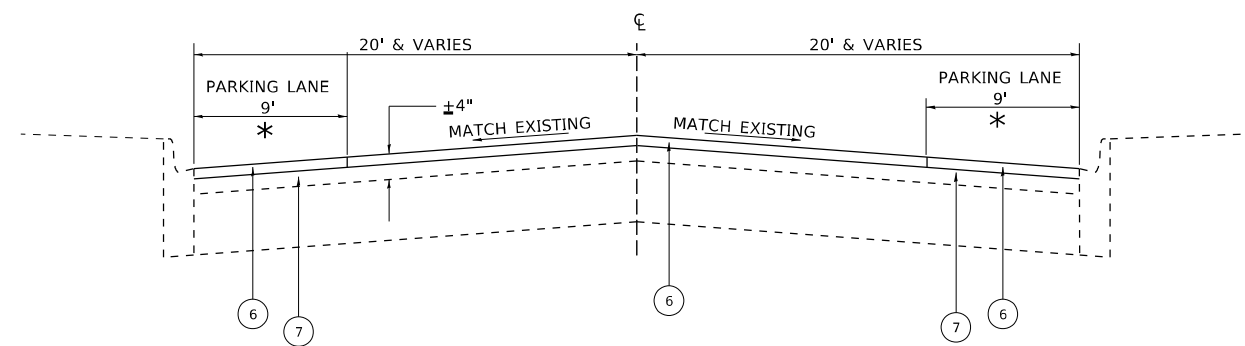
SUMMARY OF QUANTITIES			URBAN TOTAL QUANTITIES	CONSTRUCTION TYPE CODE					
CODE NO	ITEM	UNIT		0005 80% FED 20% STATE	0005 100% STATE				
Z0004562	COMBINATION CONCRETE CURB AND GUTTER REMOVAL AND REPLACEMENT	FOOT	400	400					
Z0018500	DRAINAGE STRUCTURES TO BE CLEANED	EACH	25	25					
Z0030850	TEMPORARY INFORMATION SIGNING	SO FT	102.8	102.8					
Z0033700	LONGITUDINAL JOINT SEALANT	FOOT	8294	8294					
• SPECIALTY ITEMS									



FOSTER AVE.
EXISTING TYPICAL CROSS SECTION
STA. 12+90 TO STA. 69+30

LEGEND

1. EXISTING P.C. CONCRETE PAVEMENT, ± 10"
2. EXISTING HMA SURFACE COURSE, ± 4"
3. EXISTING COMBINATION CONCRETE CURB AND GUTTER, TYPE B 6.12
4. EXISTING P.C. CONCRETE SIDEWALK
5. PROPOSED HMA SURFACE REMOVAL, 1 3/4"
6. PROPOSED POLYMERIZED HMA SURFACE COURSE, MIX "E", IL-9.5, N70, 1 3/4"
7. EXISTING HMA SURFACE OVERLAY, ± 1 1/2"



FOSTER AVE.
PROPOSED TYPICAL CROSS SECTION
STA. 12+90 TO STA. 69+30

HOT-MIX ASPHALT MIXTURE REQUIREMENTS	AIR VOIDS @ NODES	QUALITY MANAGEMENT PROGRAM (QMP)
MIXTURE TYPE		
RESURFACING		
POLYMERIZED HOT-MIX ASPHALT SURFACE COURSE, MIX "E", N70 (IL 9.5 mm)	4% @ 70 GYR	QCP
HMA PATCHING		
CLASS D PATCH (HMA BINDER IL-19mm)	4% @ 70 GYR	QC/QA
HMA REPLACEMENT OVER PATCHES (HMA BINDER IL-19mm)	4% @ 70 GYR	QC/QA
QMP DESIGNATION: QUALITY CONTROL/QUALITY ASSURANCE (QC/QA); QUALITY CONTROL FOR PERFORMANCE (QCP); PAY FOR PERFORMANCE (PFP)		

THE UNIT WEIGHT USED TO CALCULATE ALL HOT-MIX ASPHALT SURFACE MIXTURE QUANTITIES IS 112 LBS/SY/IN.

THE "AC TYPE" FOR POLYMERIZED HMA MIXES SHALL BE "SBS/SBR PG 76-22" AND FOR NON-POLYMERIZED HMA THE "AC TYPE" SHALL BE "PF 64-22" UNLESS MODIFIED BY SPECIAL PROVISIONS.

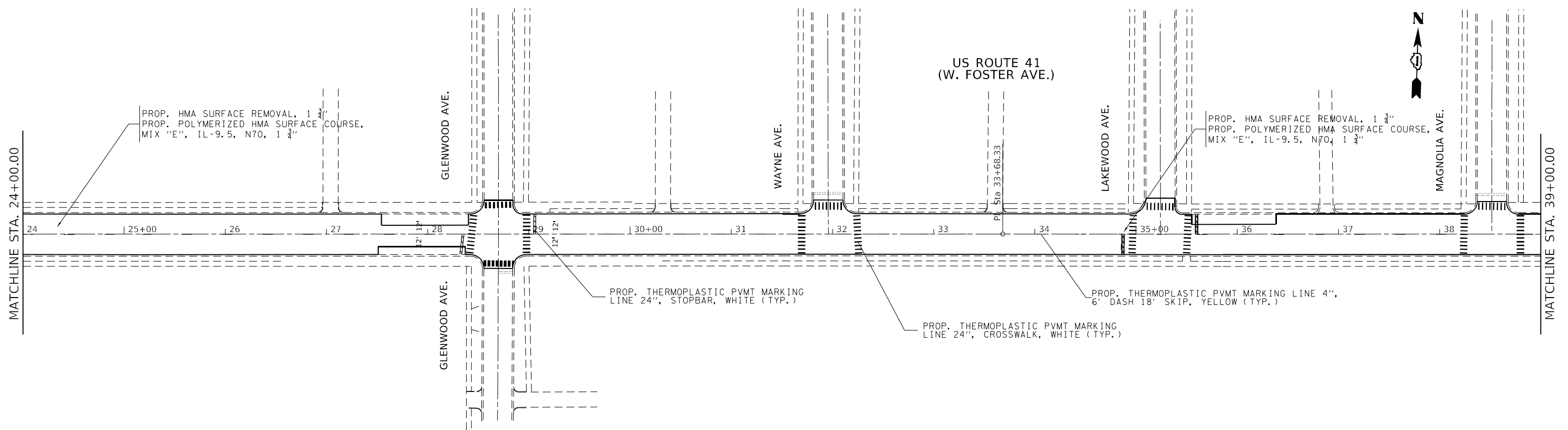
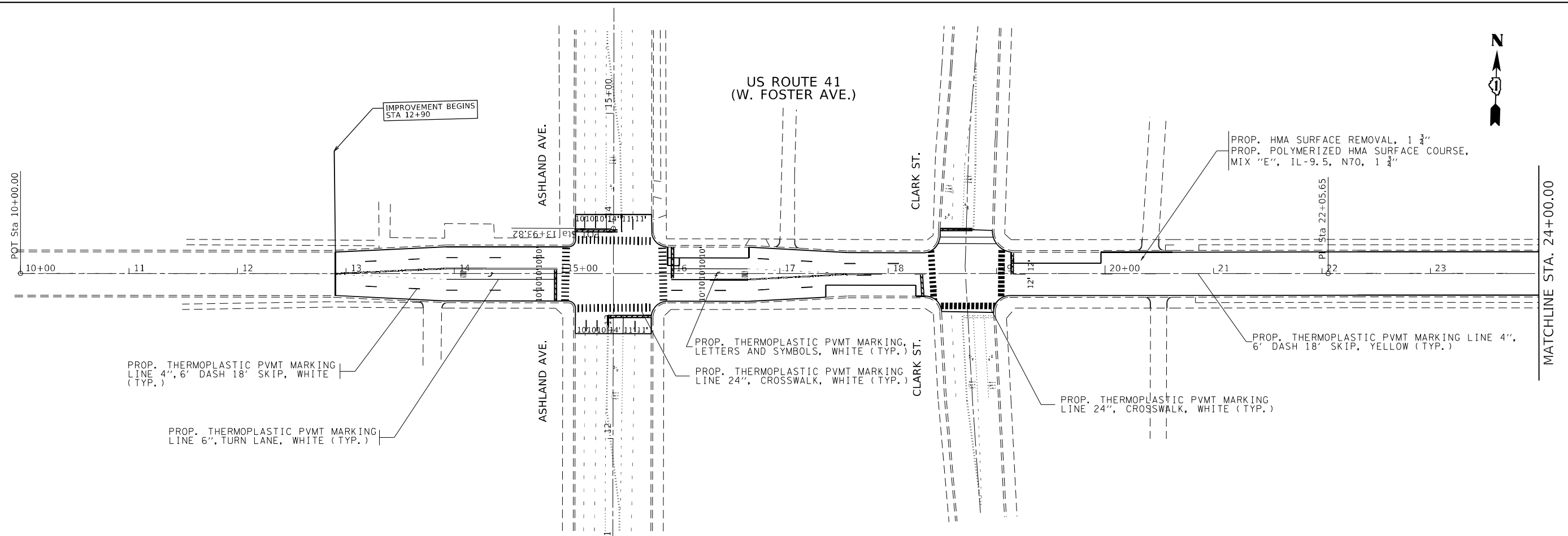
FOR USE OF RECYCLED MATERIALS SEE SPECIAL PROVISIONS

QUALITY MANAGEMENT PROGRAM (QMP) IDENTIFIES THE PARTICULAR QUALITY CONTROL SPECIFICATION THAT APPLIES TO THE HMA MIXTURE.

THE LONGITUDINAL JOINT SEALANT SHALL BE PLACED OVER THE MILLED SURFACE.

* PARKING LANE
STA. 12+60 TO STA. 53+40

CONTRACTOR SHALL PATCH FIRST BEFORE MILLING



MODEL: Default
 FILE NAME: p:\pub\lhamon\dot\illinois\dot\pww\DOT\Documents\IBOT_Office\Drawings\1\Project\14820\CADD\Drawings\14820-sh-14820.dwg
 PROJECT: 14820-CADD\Drawings\14820-sh-14820.dwg

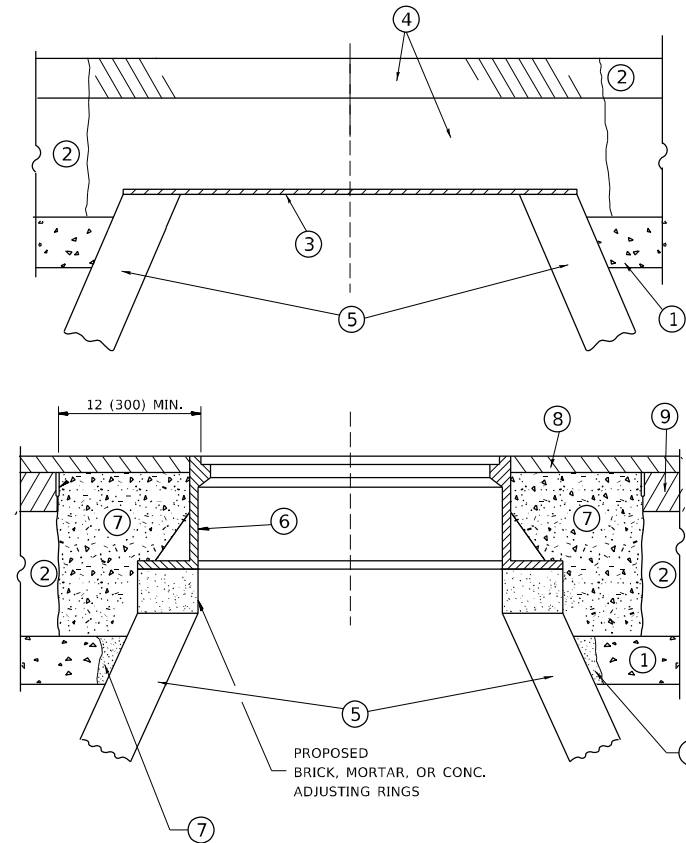
USER NAME = guillaumefp	DESIGNED -	REVISED -
	DRAWN -	REVISED -
PLOT SCALE = 100,0000' / in.	CHECKED -	REVISED -
PLOT DATE = 3/18/2021	DATE -	REVISED -

STATE OF ILLINOIS
DEPARTMENT OF TRANSPORTATION

ROADWAY PLAN
US ROUTE 41 (ASHLAND AVE TO US 41 (LAKESHORE DR.))

SCALE: SHEET OF SHEETS STA. TO STA.

F.A.U. RTE.	SECTION	COUNTY	TOTAL SHEETS	SHEET NO.
1360	2020-085-R5	COOK	19	6
ILLINOIS FED. AID PROJECT			CONTRACT NO. 62L63	



NOTES

EXISTING BROKEN FRAMES AND LIDS SHALL BE REMOVED AND DISPOSED OF BY THE CONTRACTOR AND SHALL BE REPLACED AS DIRECTED BY THE ENGINEER. REPLACEMENT FRAMES AND LIDS WILL BE PAID FOR IN ACCORDANCE WITH ARTICLE 109.04 OF THE STANDARD SPECIFICATIONS UNLESS A SEPARATE PAY ITEM HAS BEEN PROVIDED.

IF THE EXISTING LIDS ARE OPEN, THE FRAME WILL BE ADJUSTED TO THE ELEVATION OF THE MILLED PAVEMENT SURFACE PRIOR TO THE MILLING OPERATION. THE FRAME WILL NOT BE REMOVED AND COVERED BY THE METAL PLATE.

CITY OF CHICAGO CASTINGS ARE THE PROPERTY OF THE CITY AND THE CONTRACTOR SHALL NOTIFY THE CITY FOR REMOVAL AND DISPOSITION OF THE CASTINGS.

THE METAL PLATE USED TO COVER THE STRUCTURE SHALL REMAIN THE PROPERTY OF THE CONTRACTOR.

WHEN STRUCTURES ARE TO BE ADJUSTED OR RECONSTRUCTED, THE LOWERING AND RAISING OF THE FRAMES AND LIDS WILL NOT BE PAID FOR SEPARATELY BUT WILL BE INCLUDED IN THE COST OF THE CORRESPONDING PAY ITEM.

CONSTRUCTION PROCEDURES

STAGE 1 (BEFORE PAVEMENT MILLING)

- A) REMOVE A MINIMUM OF 12 (300) OF THE PAVEMENT FROM AROUND THE STRUCTURE.
- B) REMOVE THE EXISTING FRAME AND LID FROM THE STRUCTURE.
- C) COVER THE STRUCTURE OPENING WITH A 36 (900) DIAMETER METAL PLATE.
- D) BACKFILL WITH CRUSHED STONE AND A MINIMUM 1½ (40) THICK HMA SURFACE MIX APPROVED BY THE ENGINEER.

STAGE 2 (AFTER PAVEMENT MILLING)

- A) REMOVE THE HMA SURFACE MIX AND CRUSHED STONE.
- B) INSTALL THE FRAME AND LID; ADJUST THE FRAME TO ITS FINAL SURFACE ELEVATION.
- C) THE SURROUNDING SPACE SHALL BE FILLED WITH CLASS PP-1 * CONCRETE TO THE ELEVATION OF THE SURFACE OF THE EXISTING BASE COURSE OR THE BINDER COURSE.

* UNLESS OTHERWISE SPECIFIED IN THE PLANS.

THE PROCEDURE EXPLAINED ABOVE SHALL CONFORM TO THE APPLICABLE PORTIONS OF SECTIONS 353, 406, 602, AND 603 OF THE STANDARD SPECIFICATIONS EXCEPT THAT *THE CONTRACTOR SHALL ADJUST THE STRUCTURES TO THE FINISHED PAVEMENT ELEVATION NO MORE THAN 5 CALENDAR DAYS PRIOR TO PLACEMENT OF THE FINAL LIFT OF SURFACE UNLESS APPROVED BY THE ENGINEER.*

LEGEND

- ① SUB-BASE GRANULAR MATERIAL
- ② EXISTING PAVEMENT
- ③ 36 (900) DIAMETER METAL PLATE
- ④ PROPOSED CRUSHED STONE AND HMA SURFACE MIX
- ⑤ EXISTING STRUCTURE
- ⑥ FRAME AND LID (SEE NOTES)
- ⑦ CLASS PP-1 *CONCRETE
- ⑧ PROPOSED HMA SURFACE COURSE
- ⑨ PROPOSED HMA BINDER COURSE

LOCATION OF STRUCTURES

THE CONTRACTOR WILL BE REQUIRED TO KEEP A RECORD OF THE LOCATIONS OF THE BURIED STRUCTURES ACCORDING TO THE STATION AND DISTANCE LEFT OR RIGHT OF THE CENTERLINE OF PAVEMENT. UPON COMPLETION OF THE WORK, THE CONTRACTOR WILL DELIVER THE RECORD TO THE ENGINEER.

BASIS OF PAYMENT

REMOVING FRAMES AND LIDS ON DRAINAGE AND UTILITY STRUCTURES IN THE PAVEMENT PRIOR TO MILLING, AND ADJUSTING TO FINAL GRADE PRIOR TO PLACING THE SURFACE COURSE, WILL BE PAID FOR AT THE CONTRACT UNIT PRICE EACH FOR *FRAMES AND LIDS TO BE ADJUSTED (SPECIAL).*

THIS WORK WILL NOT BE PAID FOR WHEN DRAINAGE AND UTILITY STRUCTURES ARE SPECIFIED FOR PAYMENT AS STRUCTURE RECONSTRUCTION.

NEW FRAMES AND LIDS, WHEN SPECIFIED, WILL BE PAID FOR SEPARATELY.

DETAILS FOR FRAMES AND LIDS ADJUSTMENT WITH MILLING

ALL DIMENSIONS ARE IN INCHES (MILLIMETERS) UNLESS OTHERWISE SHOWN

MODEL: Default
 FILE NAME: \\paulamr.com\dwt\illinois\pwr\PIWIDOT\Documents\IBOT_Office\Drawings\1\Projects\148220\CaddData\Design\BDS\BDS.dgn

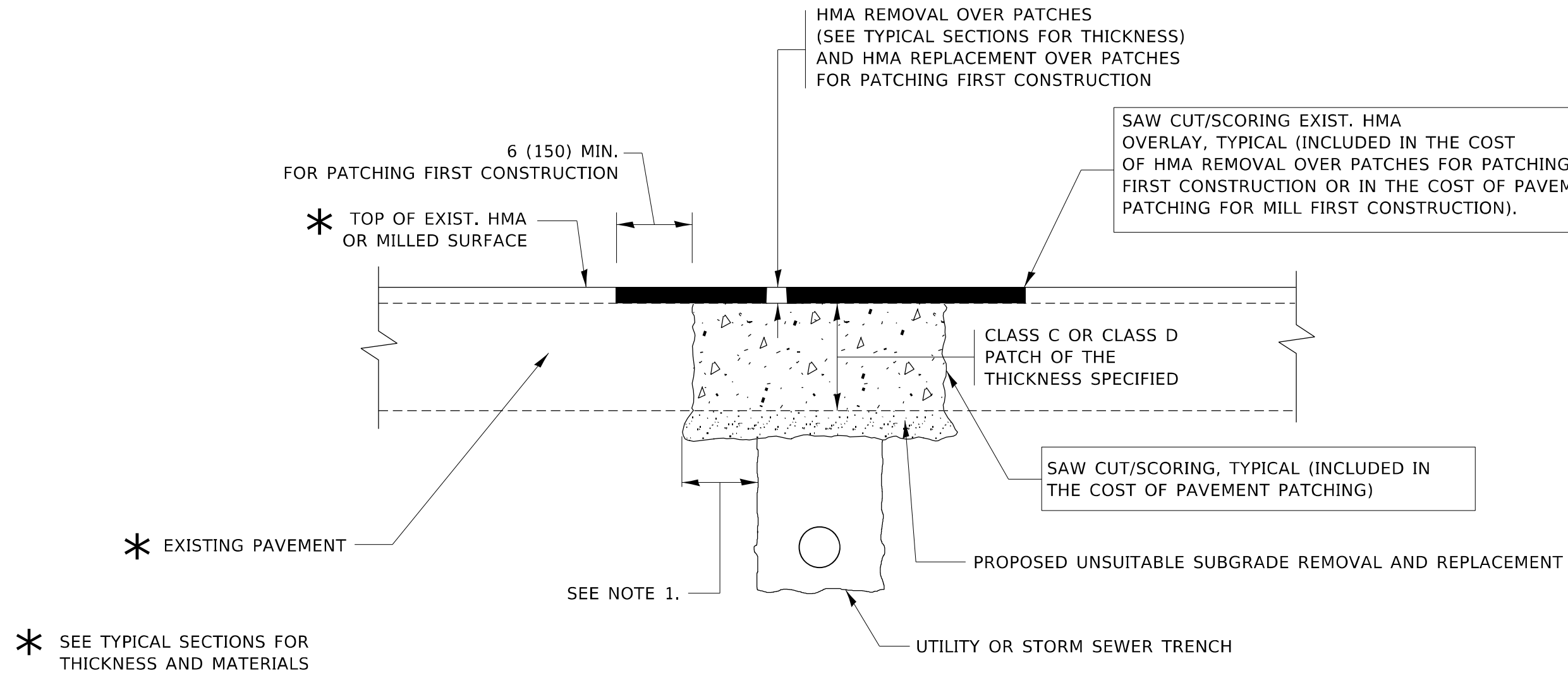
USER NAME = guillaumefp	DESIGNED - R. SHAH	REVISED - R. WEDEMAN 05-14-04
	DRAWN -	REVISED - R. BORO 01-01-07
PLOT SCALE = 100,0000' / in.	CHECKED -	REVISED - R. BORO 03-09-11
PLOT DATE = 3/18/2021	DATE - 10-25-94	REVISED - R. BORO 12-06-11

**STATE OF ILLINOIS
DEPARTMENT OF TRANSPORTATION**

**DETAILS FOR
FRAMES AND LIDS ADJUSTMENT WITH MILLING**

SCALE: NONE SHEET 1 OF 1 SHEETS STA. TO STA.

F.A.U. RTE.	SECTION	COUNTY	TOTAL SHEETS	SHEET NO.
1360	2020-085-R5	COOK	19	9
BD600-03 (BD-8)		CONTRACT NO. 62L63		
ILLINOIS		FED. AID PROJECT		



NOTES:

1. THE WIDTH OF THE FULL DEPTH PATCH OVER A TRENCH SHALL BE 12 (300) WIDER ON EACH SIDE OF THE TRENCH.
2. FOR METHOD OF MEASUREMENT AND BASIS OF PAYMENT, SEE RECURRING SPECIAL PROVISION "PATCHING WITH HOT-MIX ASPHALT OVERLAY REMOVAL".

SEQUENCE OF CONSTRUCTION (PATCHING FIRST)

1. REMOVE THE EXISTING HMA MATERIAL OVER THE AREA TO BE PATCHED.
2. REMOVE AND REPLACE WITH CLASS C OR D PATCH.
3. REPLACE HMA MATERIAL OVER THE AREA TO BE PATCHED.

SEQUENCE OF CONSTRUCTION (MILLING FIRST)

1. MILL HMA FIRST IF THERE IS AT LEAST 4½ INCHES OR MORE OF HMA MATERIAL ON TOP OF THE EXISTING PAVEMENT OR IF THE PAVEMENT IS FULL DEPTH HMA. A MINIMUM OF 2 INCHES OF HMA MATERIAL SHALL BE IN PLACE AFTER MILLING.
2. REMOVE AND REPLACE WITH FULL DEPTH CLASS D PATCHES TO TOP OF MILLED SURFACE.

ALL DIMENSIONS ARE IN INCHES (MILLIMETERS) UNLESS OTHERWISE SHOWN.

MODEL: Default
 FILE NAME: \\paulamr.com\dot\illinois\gov\pww\DOT\Documents\DOT_Offices\Bartec\1\Project\148\20\CADD\Design\Design\DESIGN.dgn

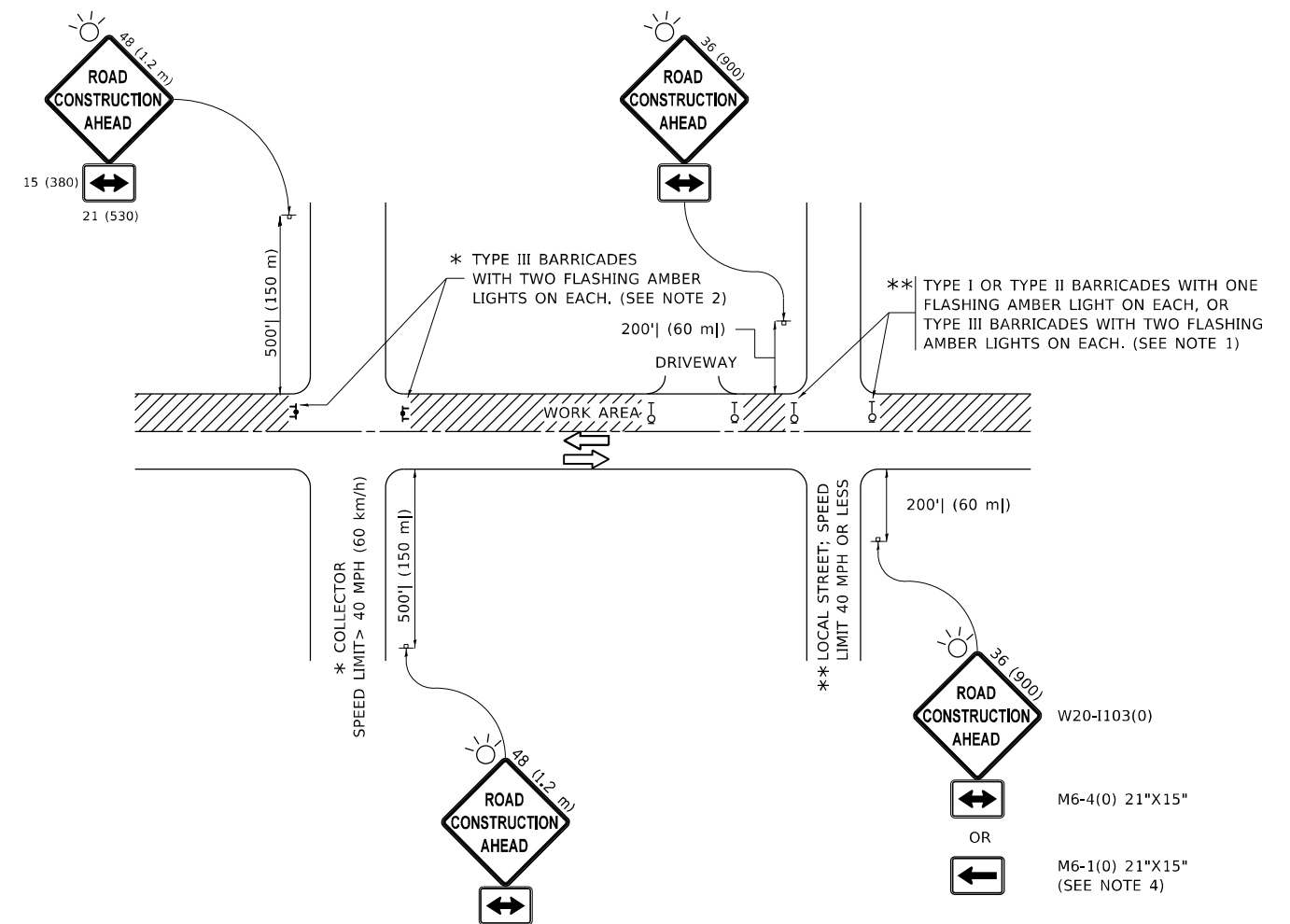
USER NAME = guillaumefp	DESIGNED - R. SHAH	REVISED - A. ABBAS 04-27-98
	DRAWN -	REVISED - R. BORO 01-01-07
PLOT SCALE = 100,0000' / in.	CHECKED -	REVISED - R. BORO 09-04-07
PLOT DATE = 3/18/2021	DATE - 10-25-94	REVISED - K. ENG 10-27-08

STATE OF ILLINOIS
DEPARTMENT OF TRANSPORTATION

PAVEMENT PATCHING FOR
HMA SURFACED PAVEMENT

SCALE: NONE SHEET 1 OF 1 SHEETS STA. TO STA.

F.A.U. RTE.	SECTION	COUNTY	TOTAL SHEETS	SHEET NO.
1360	2020-085-R5	COOK	19	10
BD400-04 (BD-22)			CONTRACT NO. 62L63	
ILLINOIS FED. AID PROJECT				



NOTES:

1. SIDE ROAD WITH A SPEED LIMIT OF 40 MPH (60 km/h) OR LESS AS SHOWN ON THE DRAWING AND AS DIRECTED BY THE ENGINEER:
 - a) ONE "ROAD CONSTRUCTION AHEAD" SIGN 36 x 36 (900x900) WITH A FLASHER MOUNTED ON IT APPROXIMATELY 200' (60 m) IN ADVANCE OF THE MAIN ROUTE.
 - b) THE CLOSED PORTION OF THE MAIN ROUTE SHALL BE PROTECTED BY BLOCKING WITH TYPE I, TYPE II OR TYPE III BARRICADES, 1/3 OF THE CROSS SECTION OF THE CLOSED PORTION.
2. SIDE ROAD WITH A SPEED LIMIT GREATER THAN 40 MPH (60 km/h) AS SHOWN ON THE DRAWING AND AS DIRECTED BY THE ENGINEER:
 - a) ONE "ROAD CONSTRUCTION AHEAD" SIGN 48 x 48 (1.2 m x 1.2 m) WITH A FLASHER MOUNTED ON IT APPROXIMATELY 500' (150 m) IN ADVANCE OF THE MAIN ROUTE.
 - b) THE CLOSED PORTION OF THE MAIN ROUTE SHALL BE PROTECTED BY BLOCKING WITH TYPE III BARRICADES, 1/2 OF THE CROSS SECTION OF THE CLOSED PORTION.
3. CONES MAY BE SUBSTITUTED FOR BARRICADES OR DRUMS AT HALF THE SPACING DURING DAY OPERATIONS. CONES SHALL BE A MINIMUM OF 28 (710) IN HEIGHT.
4. SIGNING AND THE WORK ZONE, A SINGLE HEADED ARROW (M6-1) SHALL BE USED IN LIEU OF THE DOUBLE HEADED ARROW (M6-4).
5. WHEN WORK IS BEING PERFORMED ON A SIDE ROAD OR DRIVEWAY, FOLLOW THE APPLICABLE STANDARD(S). THE DIRECTIONAL ARROW (M6-1 OR M6-4) SHALL BE COVERED OR REMOVED WHEN NO LONGER CONSISTENT WITH THE TRAFFIC CONTROL SET-UP.
6. ADVANCE WARNING SIGNS ARE TO BE OMITTED ON DRIVEWAYS UNLESS OTHERWISE SPECIFIED IN THE PLANS OR BY THE ENGINEER.
7. THE TRAFFIC CONTROL AND PROTECTION FOR SIDE ROADS, INTERSECTIONS, AND DRIVEWAYS SHALL BE INCLUDED IN THE COST OF SPECIFIED TRAFFIC CONTROL STANDARDS OR ITEMS.

All dimensions are in inches (millimeters) unless otherwise shown.

MODEL: Default
 FILE NAME: p:\m\m\room\dot\illinois\gov\p\w\dot\Documents\DOT_Offices\Distrefc_1\Project\ID1482\2\CADD\Drawings\Design\Distrefc.dgn

USER NAME = guillaumejp	DESIGNED - L.H.A.	REVISED - A. HOUSEH 10-15-96
PLOT SCALE = 100,0000' / in.	CHECKED -	REVISED - T. RAMMACHER 01-06-00
PLOT DATE = 3/18/2021	DATE - 06-89	REVISED - A. SCHUETZE 07-01-13
		REVISED - A. SCHUETZE 09-15-16

**STATE OF ILLINOIS
DEPARTMENT OF TRANSPORTATION**

**TRAFFIC CONTROL AND PROTECTION FOR
SIDE ROADS, INTERSECTIONS, AND DRIVEWAYS**

SCALE: NONE SHEET 1 OF 1 SHEETS STA. TO STA.

F.A.U. RTE.	SECTION	COUNTY	TOTAL SHEETS	SHEET NO.
1360	2020-085-R5	COOK	19	13
TC-10			CONTRACT NO. 62L63	
ILLINOIS FED. AID PROJECT				

TURN BAY ENTRANCE AT START OF LANE CLOSURE TAPER

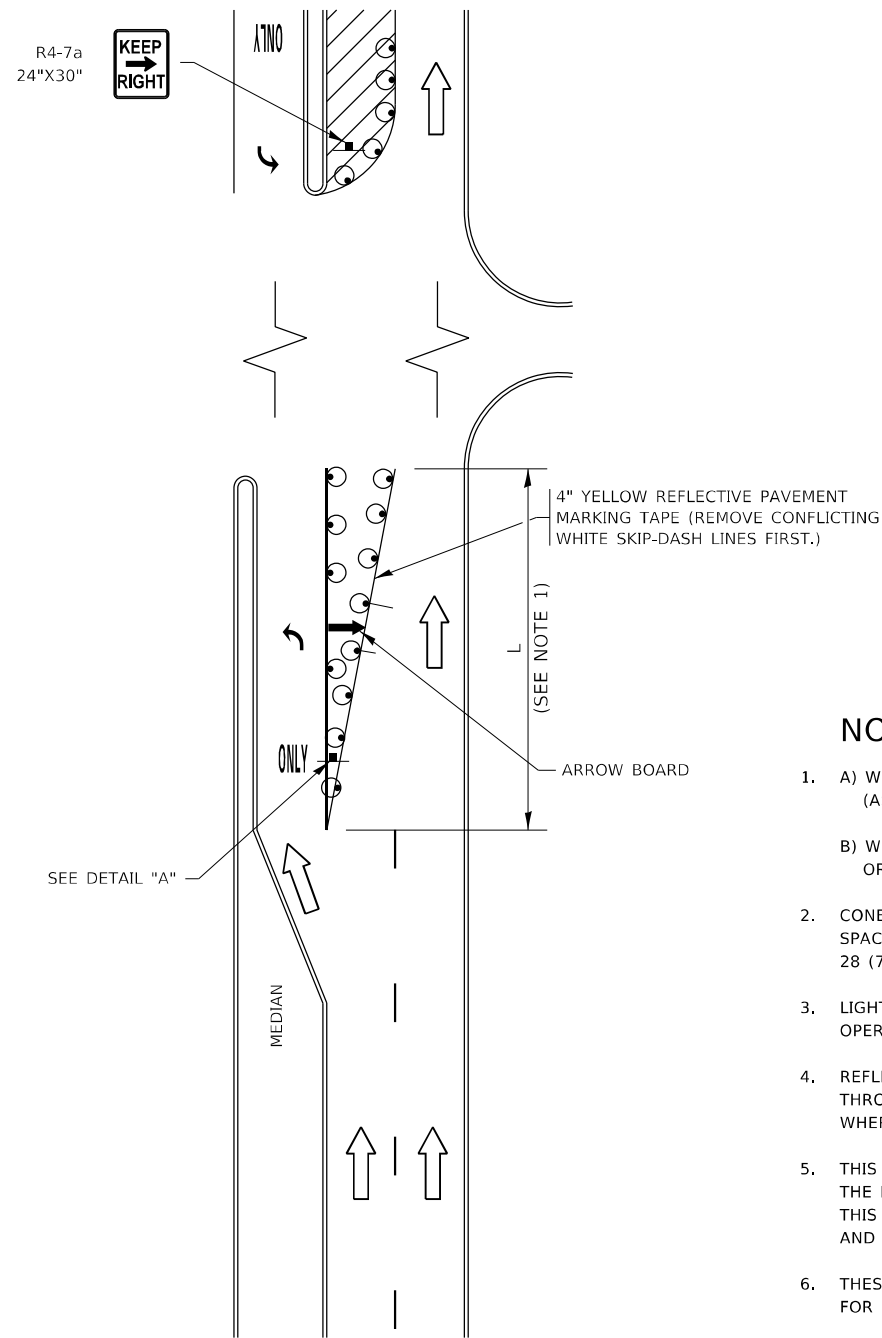


FIGURE 1

TURN BAY ENTRANCE WITHIN A LANE CLOSURE

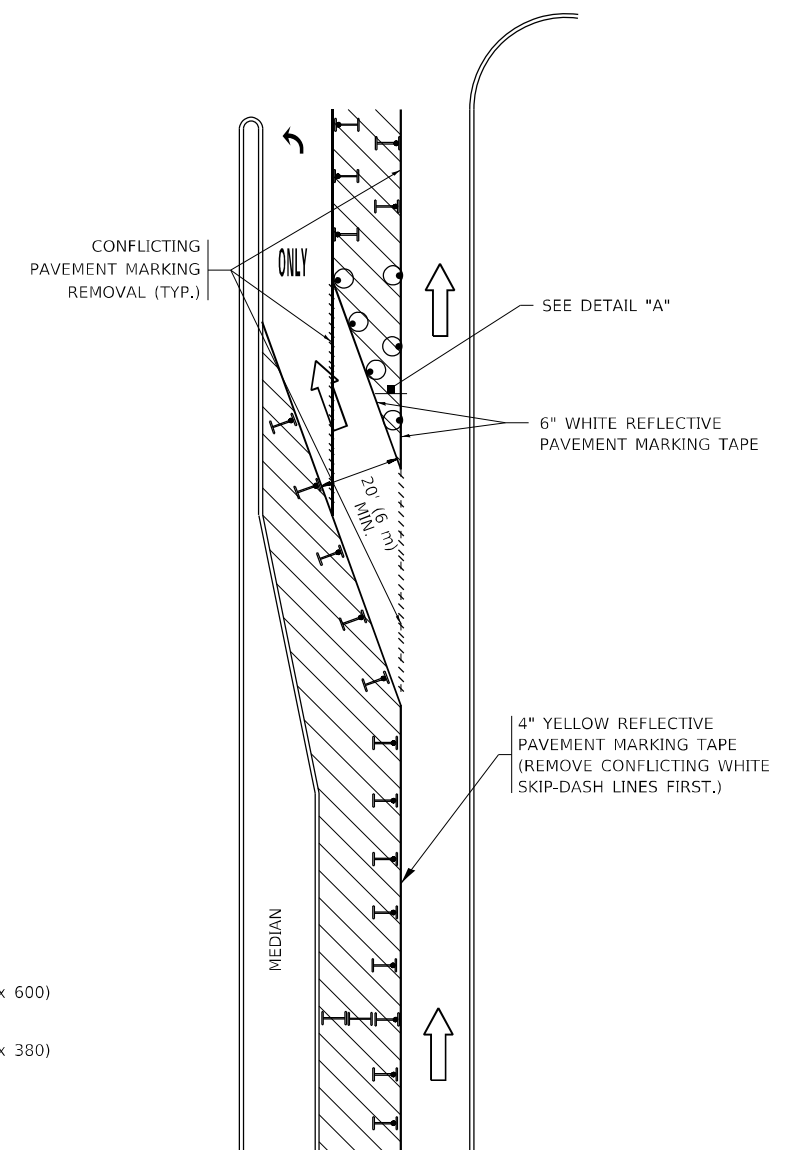
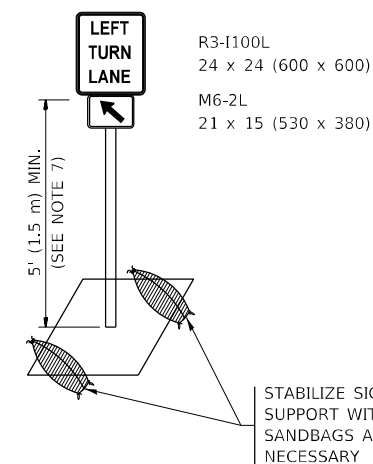


FIGURE 2

NOTES:

1. A) WHEN "L" IS \leq THE STORAGE LENGTH OF THE TURN LANE (AS SHOWN IN FIG. 1), USE FIGURE 1.
B) WHEN "L" IS $>$ THE STORAGE LENGTH OF THE TURN LANE OR THE TURN LANE IS WITHIN THE LANE CLOSURE, USE FIGURE 2.
2. CONES MAY BE SUBSTITUTED FOR BARRICADES OR DRUMS AT HALF THE SPACING DURING DAY OPERATIONS. CONES SHALL BE A MINIMUM OF 28 (710) IN HEIGHT.
3. LIGHTS WILL NOT BE REQUIRED ON BARRICADES OR DRUMS FOR DAY OPERATIONS. ALL LIGHTS SHALL BE MONODIRECTIONAL.
4. REFLECTIVE TEMPORARY PAVEMENT MARKINGS SHALL BE PLACED THROUGHOUT THE BARRICADED AREAS OF EACH TURN BAY AS SHOWN WHERE THE CLOSURE TIME IS GREATER THAN FOURTEEN (14) DAYS.
5. THIS APPLICATION ALSO APPLIES WHEN WORK IS BEING PERFORMED IN THE RIGHT LANE(S) AND THE RIGHT TURN BAY IS TO REMAIN OPEN. UNDER THIS CONDITION, "RIGHT TURN LANE" R3-1100R 24 x 24 (600 x 600) AND M6-2R 21 x 15 (530 x 380) SHALL BE USED.
6. THESE CONTROLS SHALL SUPPLEMENT MAINLINE TRAFFIC CONTROL FOR LANE CLOSURES.
7. THE SIGNS SHALL BE MOUNTED ABOVE THE BARRICADES/DRUMS ON SEPARATE SIGN SUPPORTS THAT MEET NCHRP 350 OR MASH REQUIREMENTS.
8. TRAFFIC CONTROL AND PROTECTION AT TURN BAYS (TO REMAIN OPEN TO TRAFFIC) SHALL BE INCLUDED IN THE COST OF SPECIFIED TRAFFIC CONTROL STANDARDS OR ITEMS.



DETAIL A

All dimensions are in inches (millimeters) unless otherwise shown.

MODEL: Default
FILE NAME: p:\pub\amrom.dwg
PROJECT: 14820\CADDData\Design\Dis54.dgn
PROJECT: 14820\CADDData\Design\Dis54.dgn

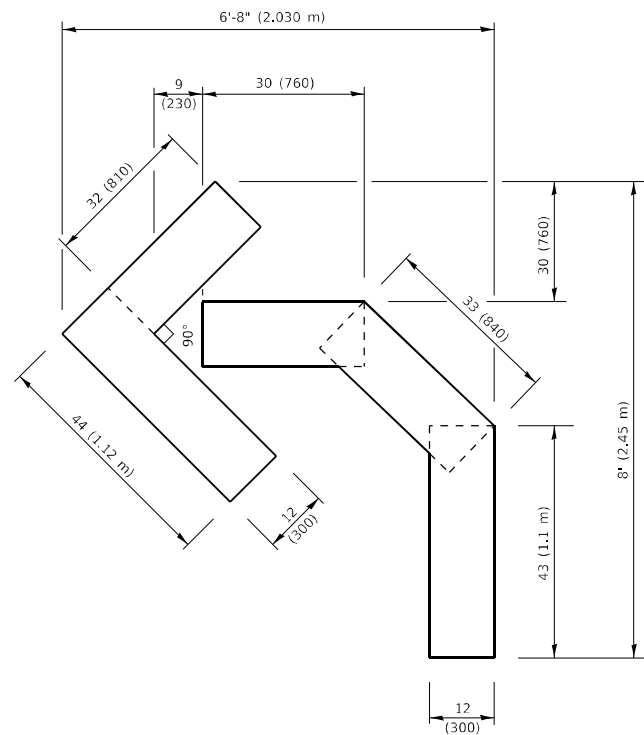
USER NAME = guillaumejp	DESIGNED - T. RAMMACHER 09-08-94	REVISED - R. BORO 09-14-09
	DRAWN - A. HOUSEH 11-07-95	REVISED - A. SCHUETZE 07-01-13
PLOT SCALE = 100,0000' / in.	CHECKED - A. HOUSEH 10-12-96	REVISED - A. SCHUETZE 09-15-16
PLOT DATE = 3/18/2021	DATE - T. RAMMACHER 01-06-00	REVISED -

**STATE OF ILLINOIS
DEPARTMENT OF TRANSPORTATION**

**TRAFFIC CONTROL AND PROTECTION AT TURN BAYS
(TO REMAIN OPEN TO TRAFFIC)**

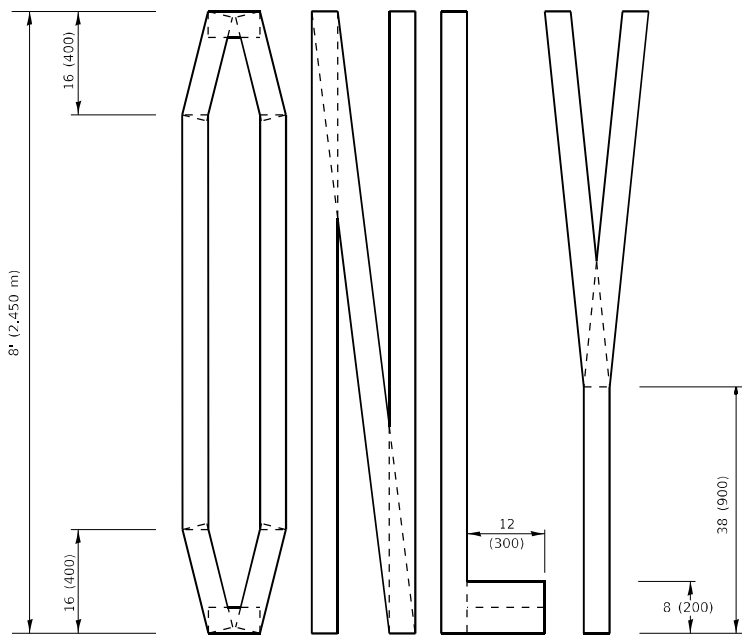
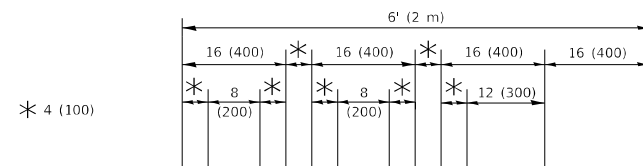
SCALE: NONE SHEET 1 OF 1 SHEETS STA. TO STA.

F.A.U. RTE.	SECTION	COUNTY	TOTAL SHEETS	SHEET NO.
1360	2020-085-R5	COOK	19	14
TC-14		CONTRACT NO. 62L63		
ILLINOIS FED. AID PROJECT				



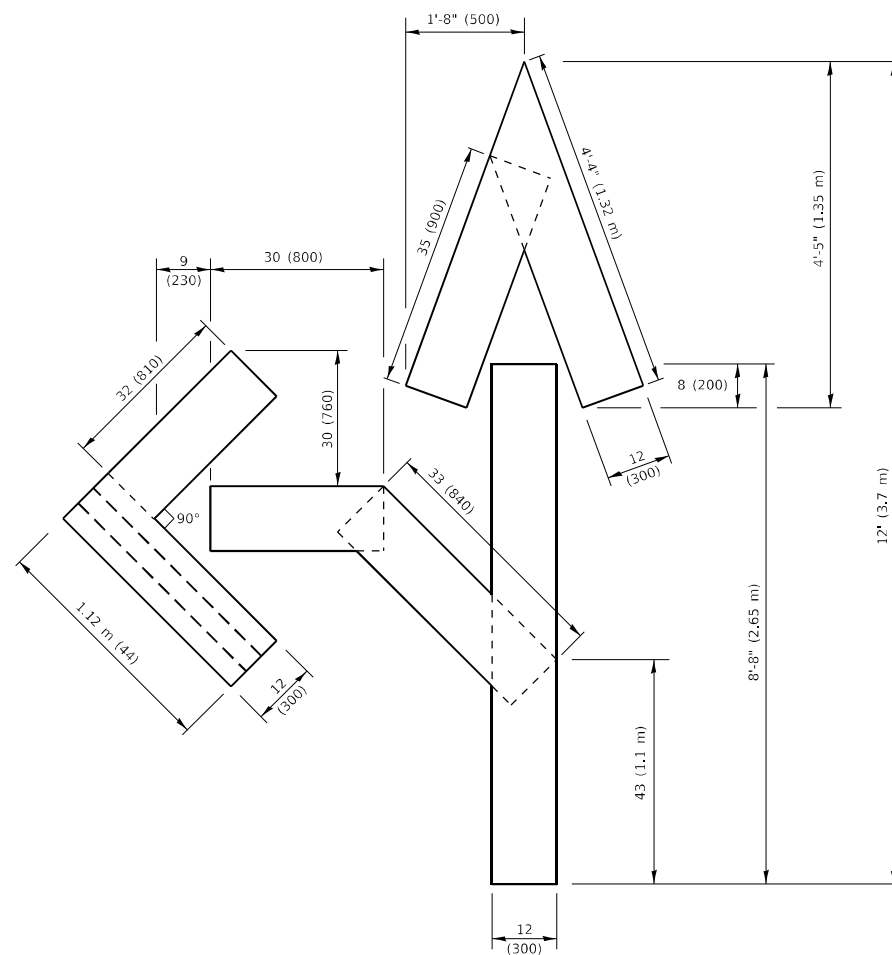
QUANTITY

4 (100) LINE = 45.5 ft. (13.9 m)
15.2 sq. ft. (1.41 sq. m)



QUANTITY

4 (100) LINE = 64.1 ft. (19.5 m)
21.4 sq. ft. (1.99 sq. m)

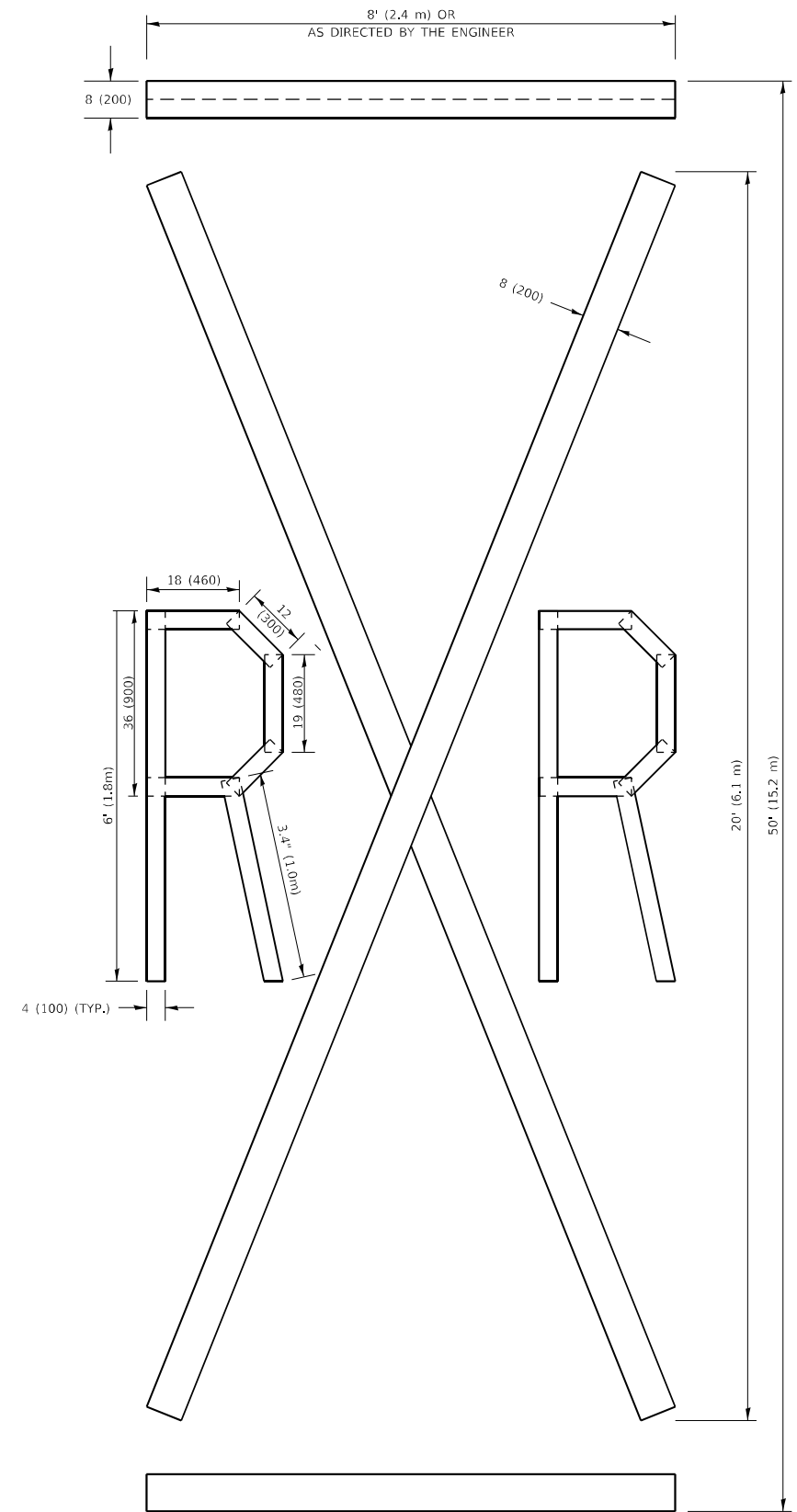


QUANTITY

4 (100) LINE = 82.5 ft. (25.1 m)
27.5 sq. ft. (2.53 sq. m)

NOTE:

ALL QUANTITIES OF PLACEMENT ARE REPRESENTED IN LINEAR FEET OF 4" LINES TO MATCH THE 4" TEMPORARY TAPE PAY ITEM AND REPRESENTS THE TOTAL QUANTITY OF 4" TAPE REQUIRED.



QUANTITY

4 (100) LINE = 225.9 ft. (68.9 m)
75.3 sq. ft. (6.99 sq. m)

All dimensions are in inches (millimeters) unless otherwise shown.

MODEL: Default
FILE: Marking_Plan.dwg
C:\Users\quillam\OneDrive\Documents\DOT_Offices\District 1\Projects\CD148420\CADD\Drawings\Design\B655.dwg

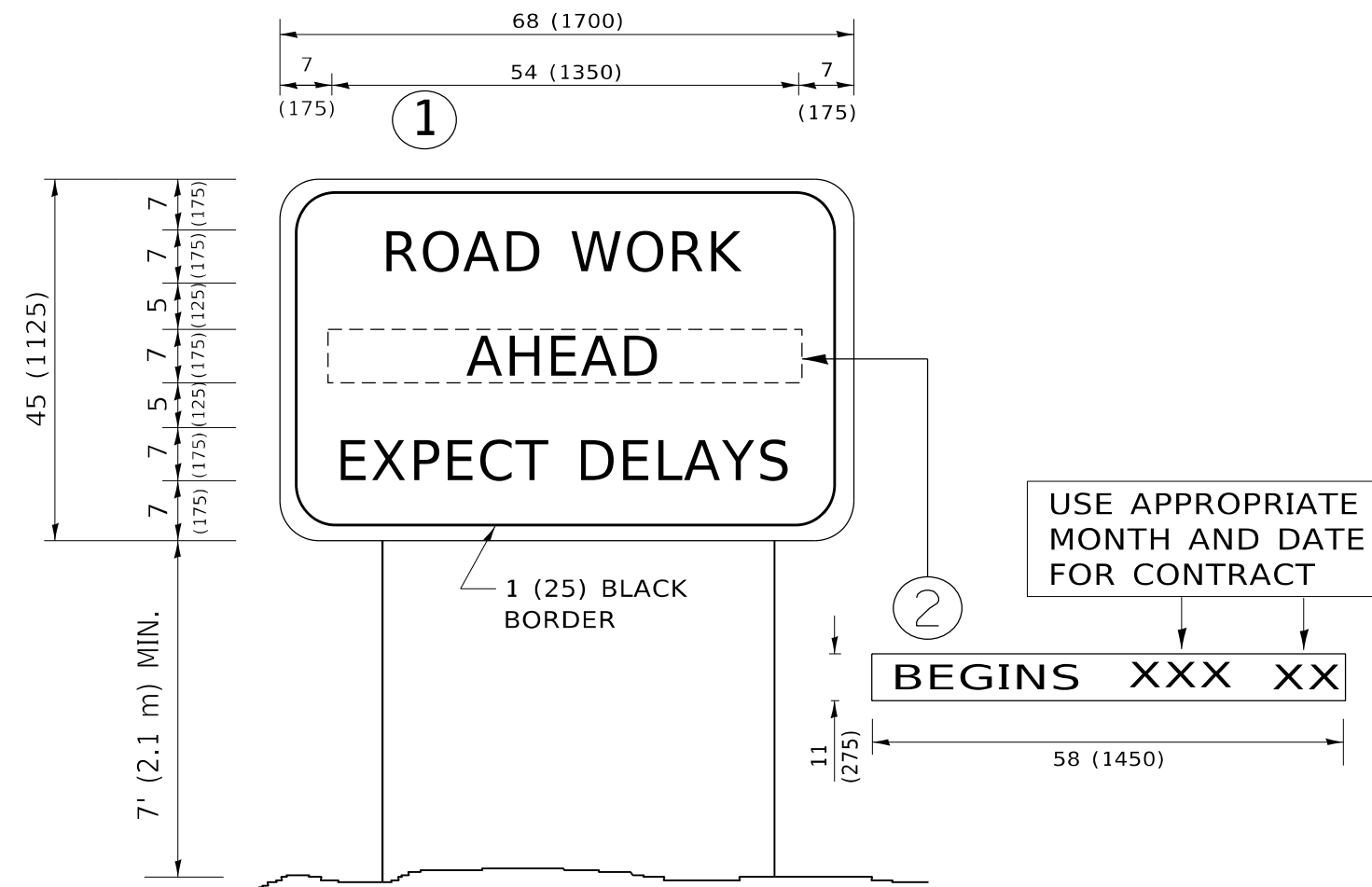
USER NAME = quillamfcp	DESIGNED -	REVISED - T. RAMMACHER 03-02-98
	DRAWN -	REVISED - E. GOMEZ 08-28-00
PLOT SCALE = 100,0010' / in.	CHECKED -	REVISED - E. GOMEZ 08-28-00
PLOT DATE = 3/18/2021	DATE - 09-18-94	REVISED - A. SCHUETZE 09-15-16

**STATE OF ILLINOIS
DEPARTMENT OF TRANSPORTATION**

SHORT TERM PAVEMENT MARKING LETTERS AND SYMBOLS

SCALE: NONE SHEET 1 OF 1 SHEETS STA. TO STA.

F.A.U. RTE.	SECTION	COUNTY	TOTAL SHEETS	SHEET NO.
1360	2020-085-R5	COOK	19	15
TC-16			CONTRACT NO. 62L63	
ILLINOIS FED. AID PROJECT				



NOTES:

1. USE BLACK LETTERING ON ORANGE BACKGROUND.
2. ERECT SIGNS IN ADVANCE OF THE LOCATION FOR THE "ROAD CONSTRUCTION AHEAD" SIGN AT LOCATIONS AS DIRECTED BY THE ENGINEER.
3. ERECT SIGN ① WITH INSTALLED PANEL ② ONE WEEK PRIOR TO THE START OF CONSTRUCTION.
4. REMOVE PANEL ② SOON AFTER THE START OF CONSTRUCTION.
5. SEE SPECIAL PROVISION FOR "TEMPORARY INFORMATION SIGNING" FOR ADDITIONAL INFORMATION.
6. ONE SIGN ASSEMBLY EQUALS 25.70 SQ. FT. (2.3 SQ. M.)
7. SHALL BE PAID FOR AS TEMPORARY INFORMATION SIGNING.

ALL DIMENSIONS ARE IN INCHES (MILLIMETERS) UNLESS OTHERWISE SHOWN.

MODEL: Default
 FILE NAME: p:\pub\lhammon.dwg
 PROJECT: I:\Projects\148420\CADDData\Design\DIS54.dgn

USER NAME = guillaumefp	DESIGNED -	REVISED - R. MIRS 09-15-97
	DRAWN -	REVISED - R. MIRS 12-11-97
PLOT SCALE = 100,0000 ' / in.	CHECKED -	REVISED - T. RAMMACHER 02-02-99
PLOT DATE = 3/18/2021	DATE -	REVISED - C. JUCIUS 01-31-07

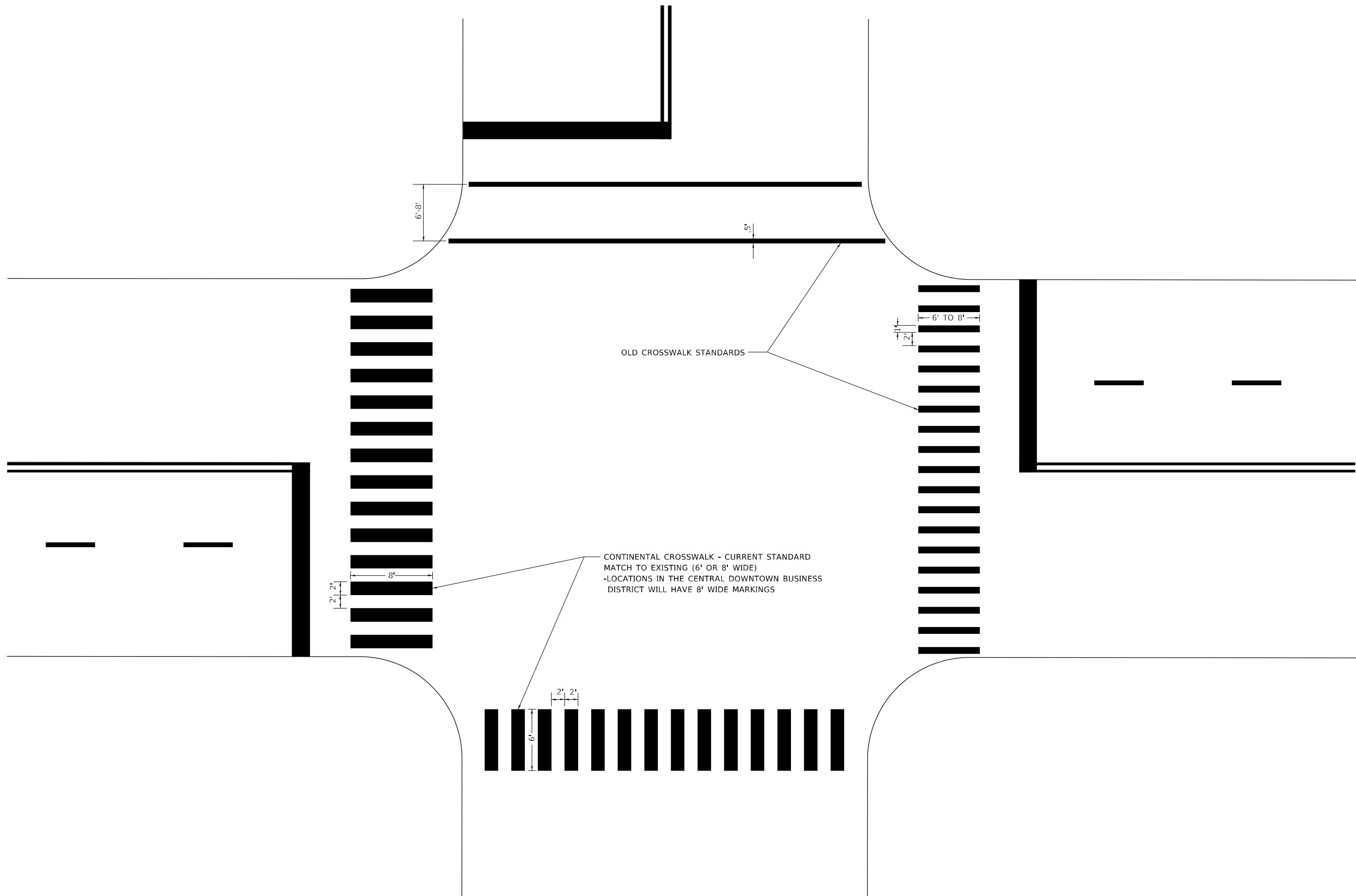
**STATE OF ILLINOIS
DEPARTMENT OF TRANSPORTATION**

**ARTERIAL ROAD
INFORMATION SIGN**

SCALE: NONE SHEET 1 OF 1 SHEETS STA. TO STA.

F.A.U. RTE.	SECTION	COUNTY	TOTAL SHEETS	SHEET NO.
1360	2020-085-R5	COOK	19	16
TC-22			CONTRACT NO. 62L63	
ILLINOIS FED. AID PROJECT				

MODEL: Default
 FILE NAME: p:\u0000\m0000\dot\illinois\gov\pww\DOT\Documents\DOT_Offices\District_1\Projects\148\20\CADD\Drawings\Design\Dis\54.dgn



OLD CROSSWALK STANDARDS

CONTINENTAL CROSSWALK - CURRENT STANDARD
 MATCH TO EXISTING (6' OR 8' WIDE)
 -LOCATIONS IN THE CENTRAL DOWNTOWN BUSINESS
 DISTRICT WILL HAVE 8' WIDE MARKINGS

**STATE OF ILLINOIS
 DEPARTMENT OF TRANSPORTATION**

**CITY OF CHICAGO
 TYPICAL PAVEMENT MARKINGS**

USER NAME = guillaumefp	DESIGNED -	REVISED - T. RAMMACHER 12-07-00
	DRAWN -	REVISED -
PLOT SCALE = 100,0000' / in.	CHECKED -	REVISED -
PLOT DATE = 3/18/2021	DATE -	REVISED -

SCALE: NONE SHEET 3 OF 3 SHEETS STA. TO STA.

F.A.U. RTE. 1360	SECTION 2020-085-R5	COUNTY COOK	TOTAL SHEETS 19	SHEET NO. 19
TC-24		CONTRACT NO.		
ILLINOIS FED. AID PROJECT				