

F.A.U. RTE.	SECTION	COUNTY	TOTAL SHEETS	SHEET NO.
9096	05-00021-02-RS	MADISON	37	1
FED. ROAD DIST. NO.	ILLINOIS	CONTRACT NO. 97441		
FEDERAL AID PROJECT				

STATE OF ILLINOIS
DEPARTMENT OF TRANSPORTATION
DIVISION OF HIGHWAYS
PROPOSED
HIGHWAY PLANS
F.A.U. ROUTE 9096 (STATE STREET)
CITY OF MADISON
SECTION NO. 05-00021-02-RS
MADISON COUNTY
JOB NO. C-98-343-06
PROJECT NO. M-5011 (209)
STU FUNDS

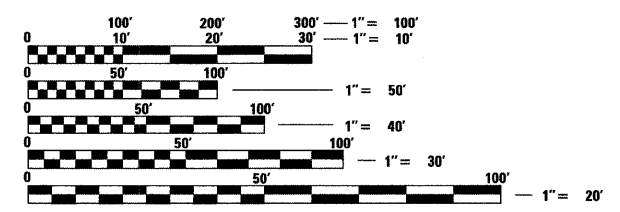
INDEX OF SHEETS

SHEET NUMBER	DESCRIPTION
1	COVER SHEET
2	GENERAL NOTES AND LEGEND
3	SUMMARY OF QUANTITIES
4-7	TYPICAL SECTIONS - EXISTING
8-11	TYPICAL SECTIONS - PROPOSED
12-14	QUANTITY SCHEDULES
15-25	PLAN AND PROFILE SHEETS
26-27	MAINTENANCE OF TRAFFIC - ADVANCED WARNING SIGNS & STAGES OF CONSTRUCTION
28-30	DRAINAGE PLAN AND PROFILE SHEETS
31-36	PAVEMENT MARKING SHEETS
37	MISCELLANEOUS DETAIL SHEETS

STANDARDS

STD. NO.	
000001-05	604001-03
001001-02	606001-04
001006	701301-03
420701-02	701311-03
424001-05	701326-03
442101-07	701501-05
602401-02	701801-04
602601-02	701901-01
602701-02	780001-02

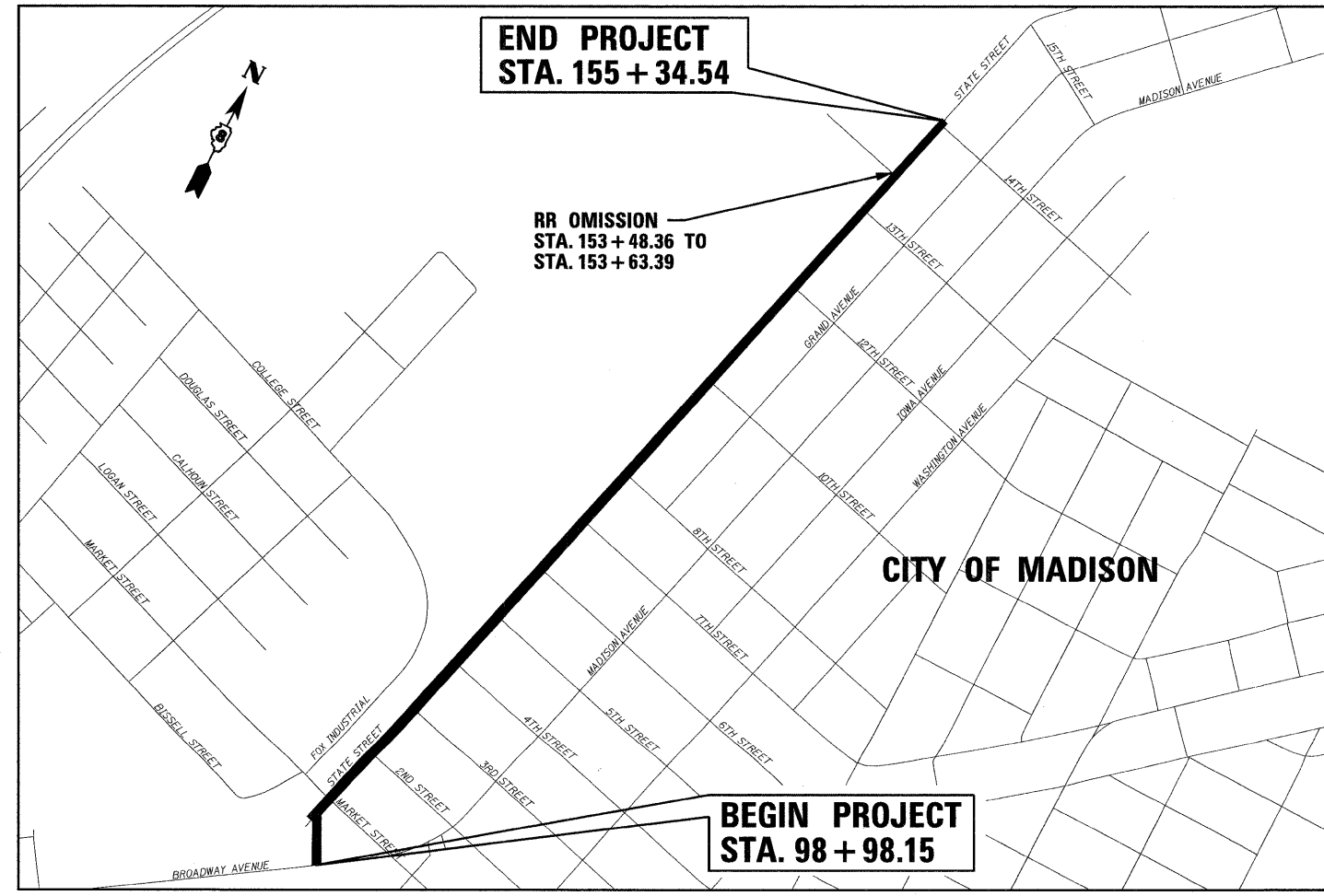
SCALES
 PLAN 1" = 20'
 PROFILE HORIZ. 1" = 20'
 PROFILE VERT. 1" = 5'
 CROSS SECTIONS 1" = 10' HORIZ.
 1" = 5' VERT.



FULL SIZE PLANS HAVE BEEN PREPARED USING STANDARD ENGINEERING SCALES. REDUCED SIZED PLANS WILL NOT CONFORM TO STANDARD SCALES. IN MAKING MEASUREMENTS ON REDUCED PLANS, THE ABOVE SCALES MAY BE USED.

J.U.L.I.E.
JOINT UTILITY LOCATION INFORMATION FOR EXCAVATION
1-800-892-0123
OR 811

DESIGN DESIGNATION
FUNCTIONAL CLASSIFICATION: COLLECTOR
ADT: 2500 (2009) 3050 (2029)
DHV: 305 (2029)
DESIGN SPEED: 25 MPH



LOCATION MAP

SCALE: 1" = 500'

GROSS LENGTH OF PROJECT: 5636.4 LIN. FT. = 1.068 MILES
NET LENGTH OF PROJECT: 5621.4 LIN. FT. = 1.065 MILES
SECTIONS 24 & 25, T. 3 N., R. 10 W., 3RD P.M.

STATE OF ILLINOIS, DEPARTMENT OF TRANSPORTATION

Approved 4-8-10

 City of Madison, Mayor

Passed 4-14-10

 District 8 Engineer of Local Roads & Streets

Releasing for Bid Based on Limited Review 4-14-10

 Deputy Director of Highways, Region 5 Engineer



Expires 11-30-11

BRIAN F. KULICK, P.E. No. 49936 DATE 4/8/10
 (Printed by Authority of the State of Illinois)
 Job No. E091006

Juneau Associates, Inc. P.C.
 CONSULTING ENGINEERS AND LAND SURVEYORS
 2100 State Street, P.O. Box 1325
 Granite City, Illinois 62040
 Phone: (618) 877-1400 / (618) 452-5535
 Fax: (618) 452-5541

100 North Research Drive
 Edwardsville, Illinois 62025
 Phone: (618) 659-0900 / (618) 659-0800
 Fax: (618) 659-0941