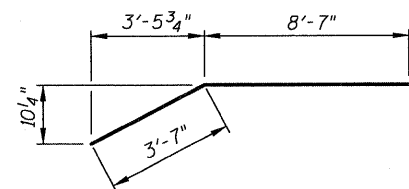


PLAN

* Top of Seat Elevation.

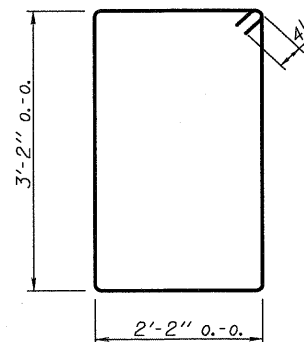
NOTES

1. The Backwall and the portion of the Wingwalls above the bonded construction joint shall be cast against the in-place beam.
2. Space reinforcement in pile cap to miss dowel rods.
3. Top of concrete cap and backwall shall be finished parallel to the centerline of the roadway.

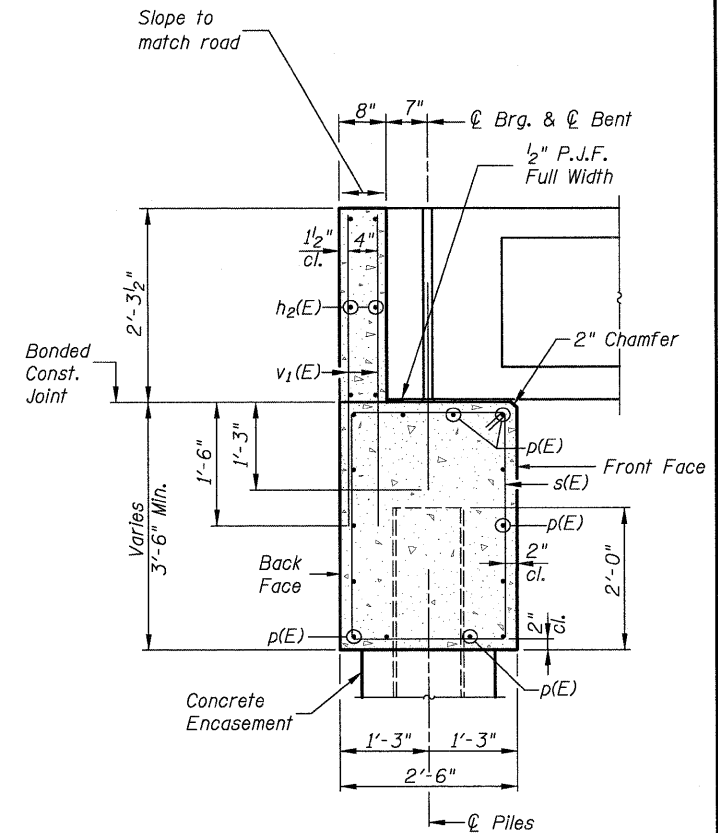


BAR h1(E)

BAR u(E)



BAR s(E)

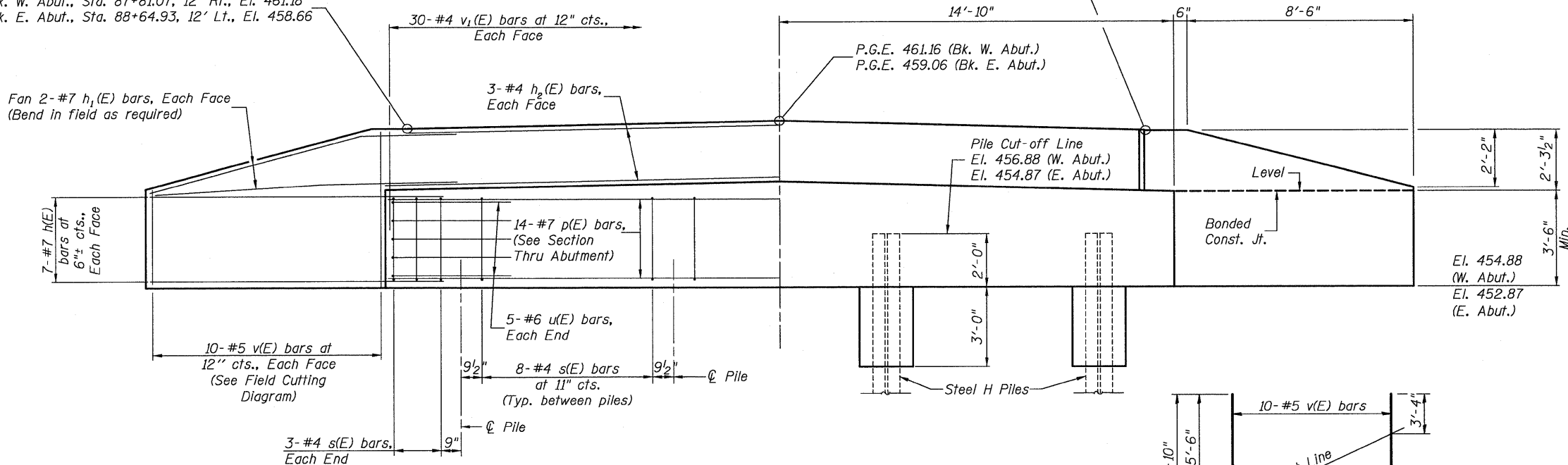


SECTION THRU ABUTMENT

(at Right Angles)

Bk. W. Abut., Sta. 87+81.07, 12' Rt., El. 461.18
 Bk. E. Abut., Sta. 88+64.93, 12' Lt., El. 458.66

Bk. W. Abut., Sta. 87+94.93, 12' Lt., El. 460.76
 Bk. E. Abut., Sta. 88+51.07, 12' Rt., El. 459.08



ELEVATION

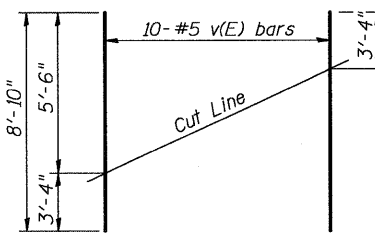
PILE DATA

DESIGNED	B.I.B.
CHECKED	L.D.G.
DRAWN	K.H.L.
CHECKED	B.G.H.

	W. ABUT.	E. ABUT.
Type:	Steel HP12x63	Steel HP12x63
Nominal Required Bearing:	497 k	497 k
Factored Resistance Available:	248 k	248 k
Est. Length:	15 ft.±	25 ft.±
No. Production Piles:	3	3
No. Test Piles:	1	1

FIELD CUTTING DIAGRAM

Order v(E) full length. Cut as shown and use remainder of bars in opposite face.



BILL OF MATERIAL FOR ONE ABUTMENT

Bar	No.	Size	Length	Shape
h(E)	28	#7	12'-2"	—
h1(E)	8	#7	12'-2"	—
h2(E)	6	#4	29'-4"	—
p(E)	14	#7	29'-4"	—
s(E)	30	#4	11'-5"	□
u(E)	10	#6	11'-1"	—
v(E)	20	#5	8'-10"	—
v1(E)	60	#4	3'-8"	—
Concrete Structures			Cu. Yd.	15.7
Reinforcement Bars, Epoxy Coated			Pound	2,580
Concrete Encasement			Cu. Yd.	1.4

PILE BENT ABUTMENT

SHEET NO. 5 8 SHEETS	T.R.	SECTION	COUNTY	TOTAL SHEETS	SHEET NO.
	165	96-1415-00-BR	WASHINGTON	15	9
S.N. 095-3251			CONTRACT NO. 97435		
FED. ROAD DIST. NO. ILLINOIS FED. AID PROJECT					