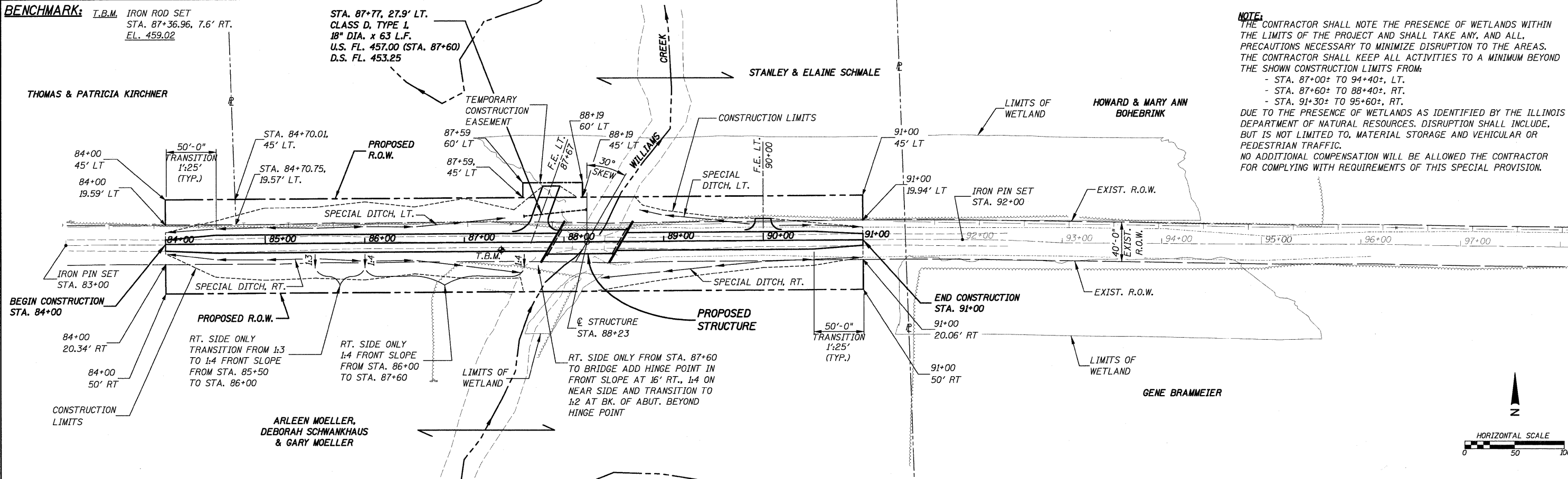


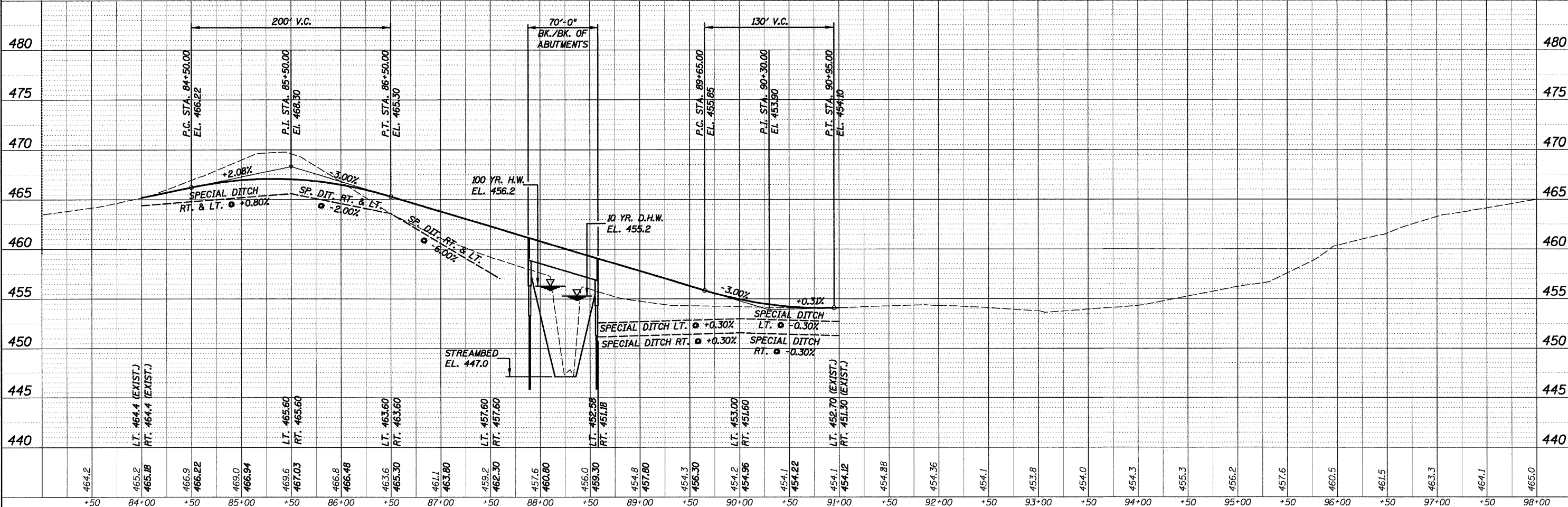
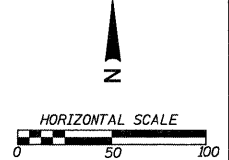
04_P1PR0208.DWG MAR. 15, 2010

DATE	
BY	
NO.	
PLANNING	
DESIGNED	
CHECKED	
DATE	

DATE	
BY	
NO.	
PROFILES	
DESIGNED	
CHECKED	
DATE	



NOTE:
 THE CONTRACTOR SHALL NOTE THE PRESENCE OF WETLANDS WITHIN THE LIMITS OF THE PROJECT AND SHALL TAKE ANY, AND ALL, PRECAUTIONS NECESSARY TO MINIMIZE DISRUPTION TO THE AREAS. THE CONTRACTOR SHALL KEEP ALL ACTIVITIES TO A MINIMUM BEYOND THE SHOWN CONSTRUCTION LIMITS FROM:
 - STA. 87+00± TO 94+40±, LT.
 - STA. 87+60± TO 88+40±, RT.
 - STA. 91+30± TO 95+60±, RT.
 DUE TO THE PRESENCE OF WETLANDS AS IDENTIFIED BY THE ILLINOIS DEPARTMENT OF NATURAL RESOURCES, DISRUPTION SHALL INCLUDE, BUT IS NOT LIMITED TO, MATERIAL STORAGE AND VEHICULAR OR PEDESTRIAN TRAFFIC. NO ADDITIONAL COMPENSATION WILL BE ALLOWED THE CONTRACTOR FOR COMPLYING WITH REQUIREMENTS OF THIS SPECIAL PROVISION.



FILE NAME =	USER NAME =	DESIGNED -	REVISED -	STATE OF ILLINOIS DEPARTMENT OF TRANSPORTATION	PLAN & PROFILE EXISTING & PROPOSED ROADWAY	T.P. RTE.	SECTION	COUNTY	TOTAL SHEETS	SHEET NO.
h:\85208\04_P1PR_5208.dwg	_USERDESCR_	B.I.B.				165	96-14115-00-BR	WASHINGTON	15	4
PLLOT SCALE = 49.9999' / IN.	DATE = 3/19/2010	K.H.L.				S.N. 095-3251		CONTRACT NO. 97435		
		L.D.G.				ILLINOIS FED. AID PROJECT				

H.M.G. INC. 5208