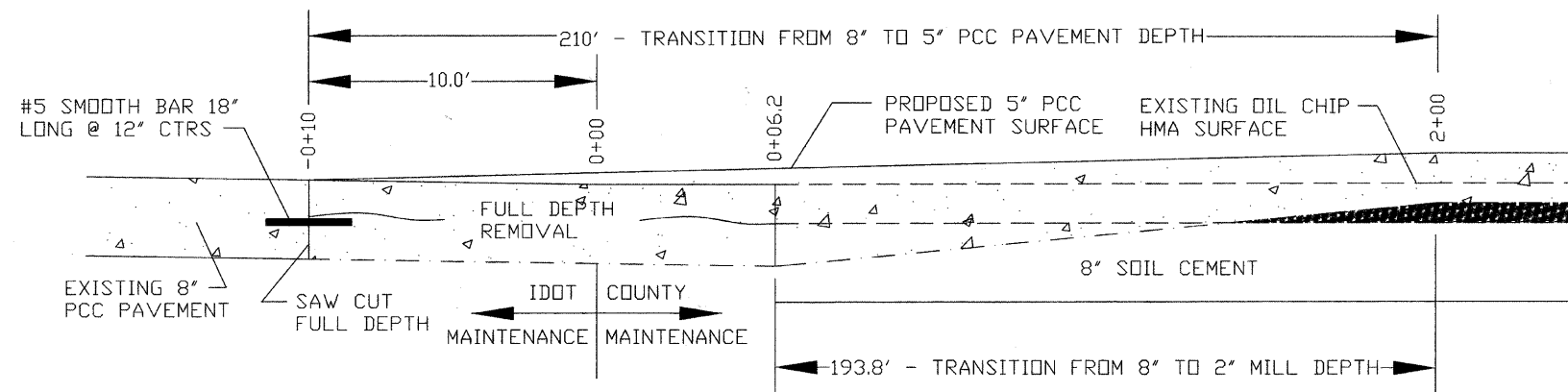


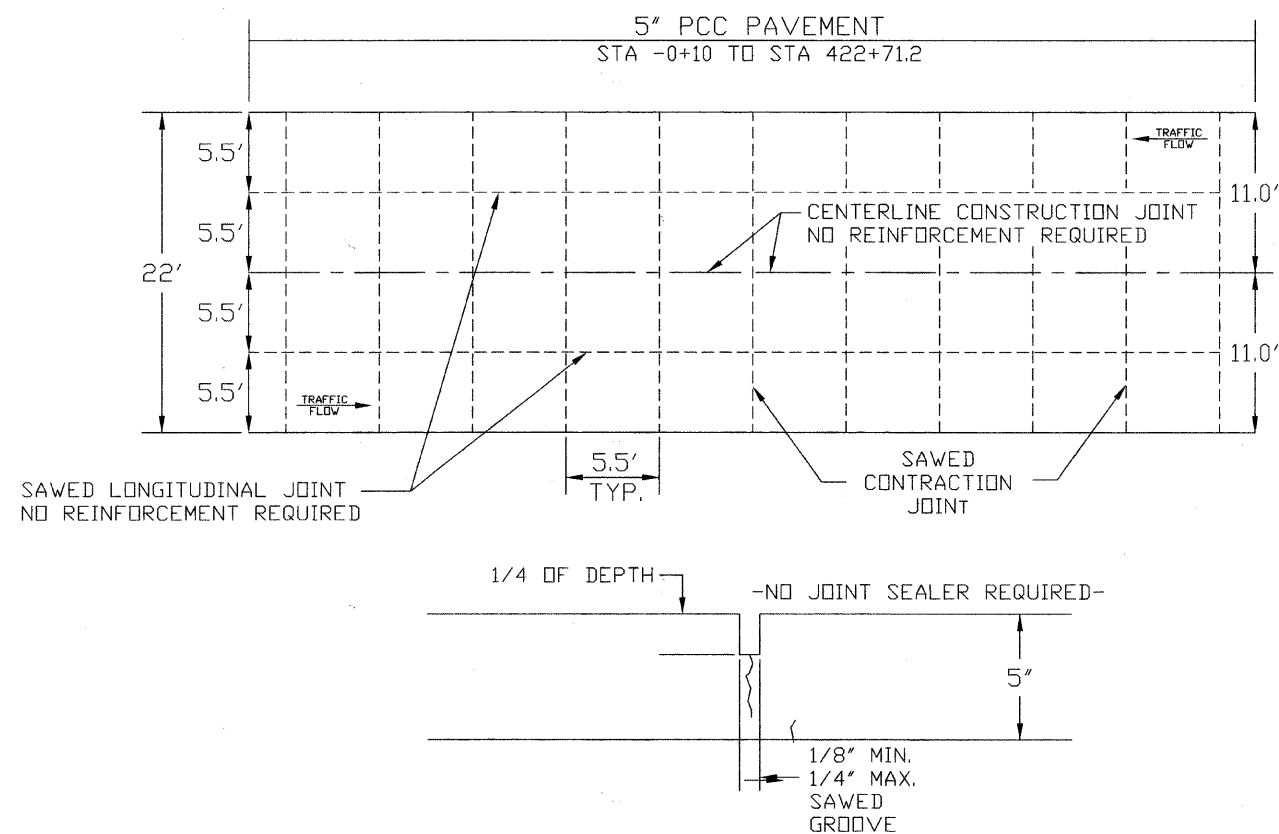
## DETAIL OF TRANSITION FROM EXISTING 8" PCC PAVEMENT TO PROPOSED 5" PCC PAVEMENT



### NOTES

- 1) STATION 0+00 IS LOCATED AT A FAILED AREA OF THE EXISTING PCC PAVEMENT THAT HAS BEEN FILLED WITH BITUMINOUS COLD PATCH, THEREFORE THE BEGINNING OF IMPROVEMENTS HAVE BEEN EXTENDED ONTO THE IDOT MAINTENANCE SECTION A DISTANCE OF 10' WHICH WILL REPLACE THE FAILED AREA OF PAVEMENT AND PROVIDE A SMOOTH TRANSITION FROM THE EXISTING TO THE IMPROVED PAVEMENTS.
- 2) FULL DEPTH PCC PAVEMENT REMOVAL FROM STA -0+10 TO 0+06.2 SHALL BE MEASURED BY THE SQ. YD. AND SHALL BE INCLUDED IN AND PAID FOR AT THE CONTRACT UNIT PRICE FOR SURFACE REMOVAL 2", SPECIAL
- 3) THE TRANSITION PAVEMENT FROM 8" THICK TO 5" THICK AT STA. -0+10 TO STA 2+00 SHALL BE INCLUDED IN AND PAID FOR AT THE CONTRACT UNIT PRICE FOR PCC PAVEMENT, FURNISHED (CU. YD.) AND PCC PAVEMENT 5", PLACEMENT (SQ. YD.)

## CONTRACTION / CONSTRUCTION JOINTS

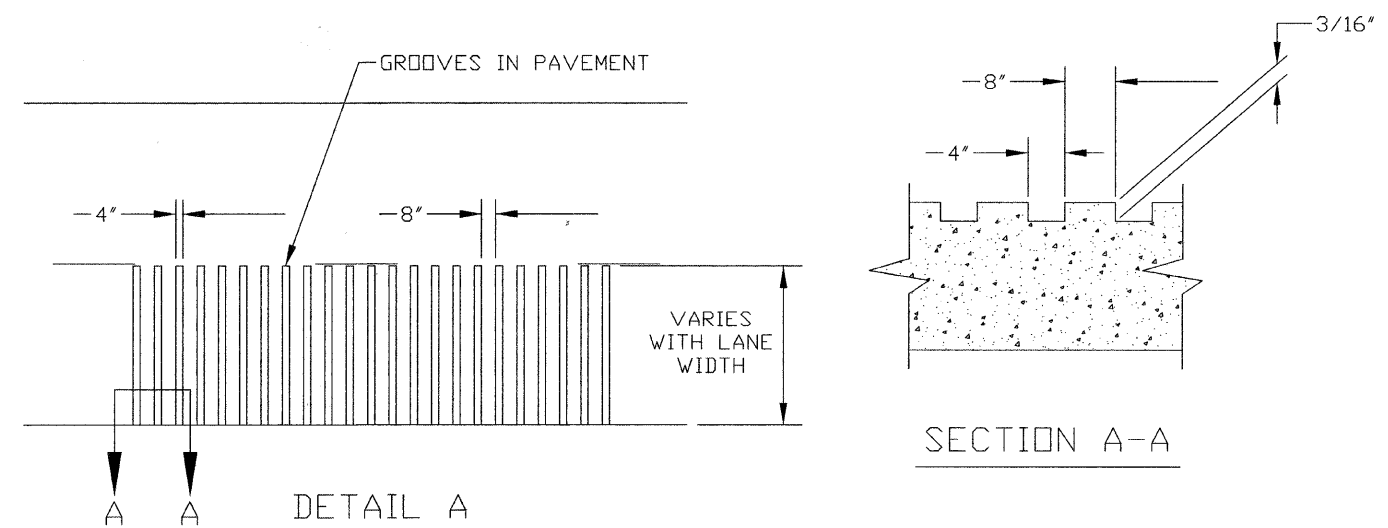
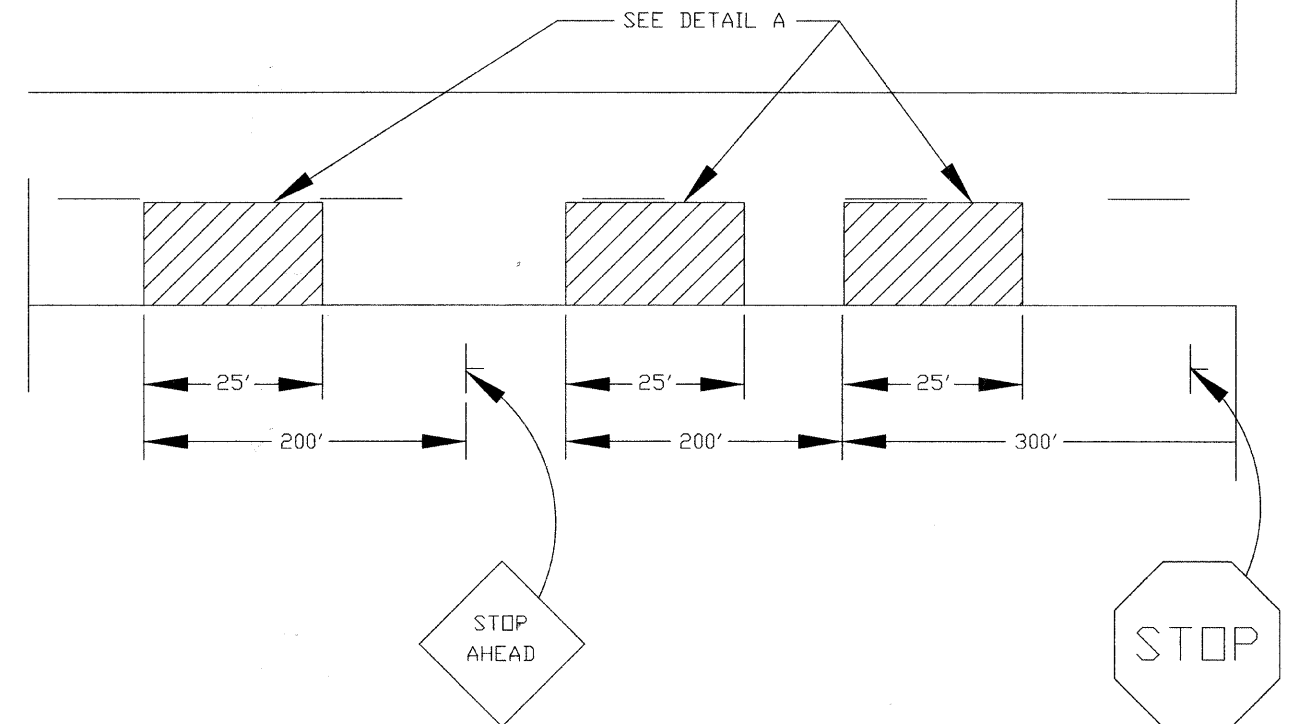


## RUMBLE STRIP DETAILS

ROUTE	SECTION	COUNTY	SHEET NO.	TOTAL SHEETS
FAS 2797	07-00081-00-RS	CLAY	4	8
FEDERAL ROAD DISTRICT 7	ILLINOIS	FEDERAL AID PROJ.		
CONTRACT NO. 95625				

### LOCATIONS

3 EACH @ KINMUNDY RD (F.A.S. 2703)  
3 EACH @ U.S. RT 50 (F.A. RT. 13)



### NOTES

- 1) ALL GROOVES SHALL BE CONSTRUCTED USING A 4" MILLING HEAD OR SERIES OF 4" MILLING HEADS CAPABLE OF CUTTING TO THE SPECIFIED DEPTH OR ANY VARIABLE DEPTH.
- 2) THIS WORK WILL BE MEASURED FOR PAYMENT PER EACH 25' INDIVIDUAL RUMBLE STRIP AND PAID FOR AT THE CONTRACT UNIT PRICE EACH FOR RUMBLE STRIP, WHICH PRICE SHALL INCLUDE ALL EQUIPMENT, MATERIAL, LABOR AND OTHER ITEMS REQUIRED TO INSTALL EACH INDIVIDUAL RUMBLE STRIP.