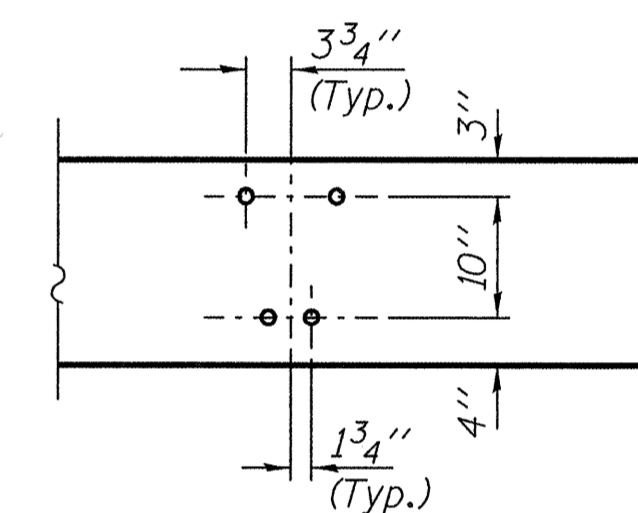
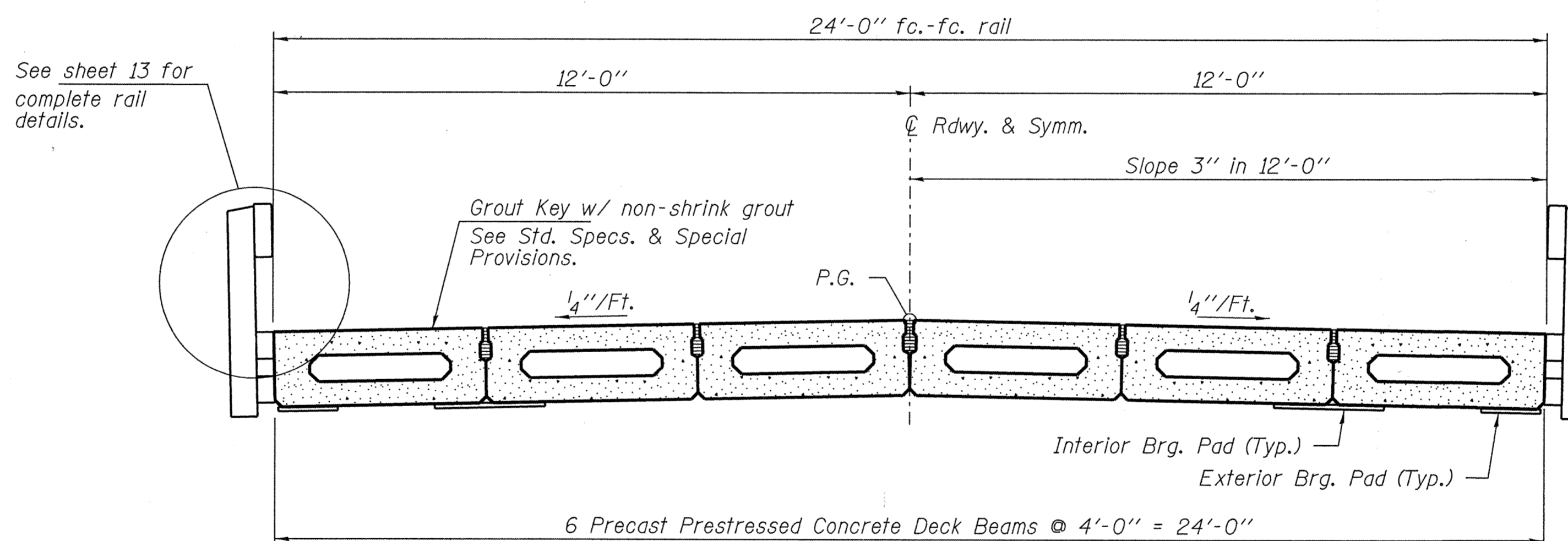


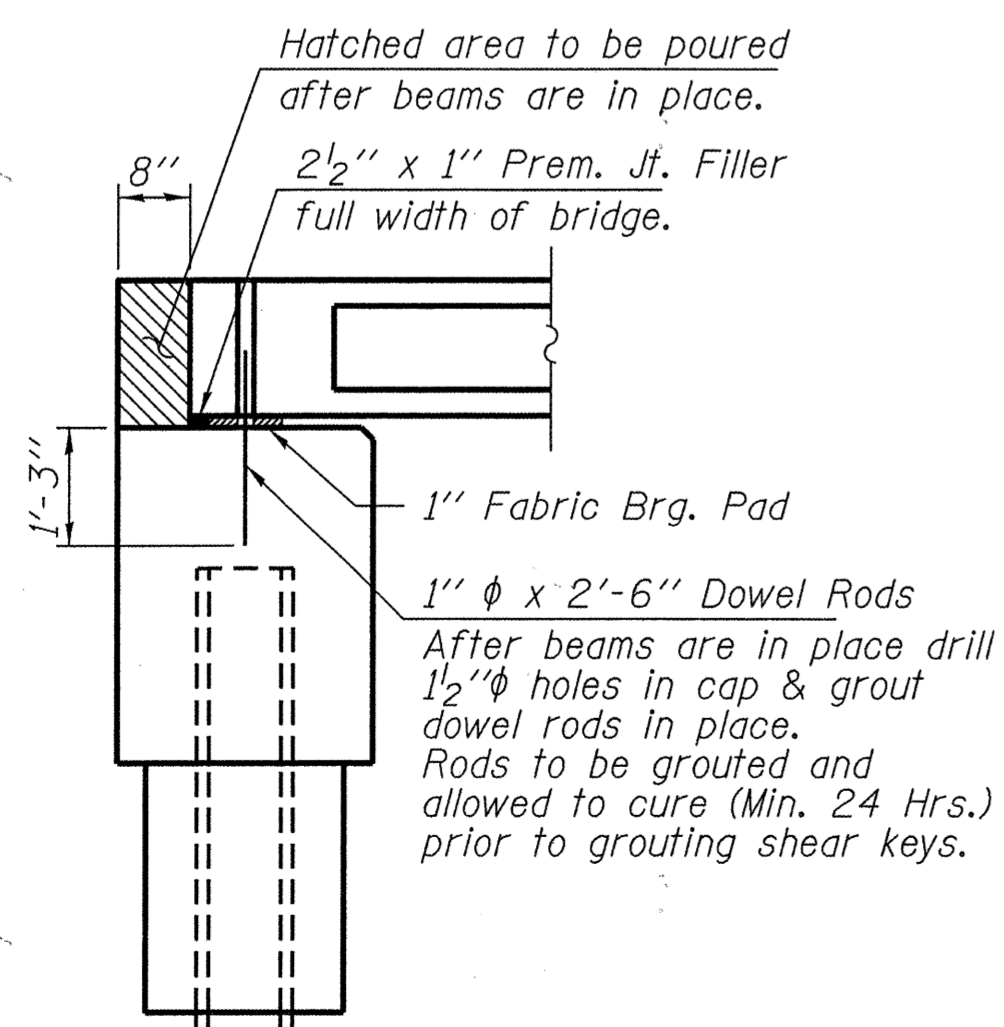
ELEVATION
Showing Rail Post Spaces
See sheet 13 for Railing Details.



DETAIL A



CROSS SECTION
See sheets 10 & 11 for Superstructure.



SECTION AT ABUTMENTS

© Rt. L's

DESIGNED	- A.S.L.
CHECKED	- S.W.M.
DRAWN	- D.A.B.
CHECKED	- S.W.M.

SUPERSTRUCTURE DETAILS
STRUCTURE NO. 013-3235

HAMPTON, LENZINI AND RENWICK, INC. CIVIL ENGINEERS - STRUCTURAL ENGINEERS - LAND SURVEYORS HLR 3085 STEVENSON DRIVE, SUITE 201 SPRINGFIELD, ILLINOIS 62703 217.546.3400 www.hirengineering.com <small>184.000959 ILLINOIS PROFESSIONAL DESIGN FIRM LS / PE / SE CORPORATION</small>	T.R.	SECTION	COUNTY	TOTAL SHEETS	SHEET NO.
	363	06-11129-00-BR	CLAY	16	12
PROJECT NUMBER: 09.0128	DATE: 02/18/10	STANFORD ROAD DISTRICT		CONTRACT NO. 95621	
		FED. ROAD DIST. NO.	ILLINOIS	FED. AID PROJECT BROS-025(061)	