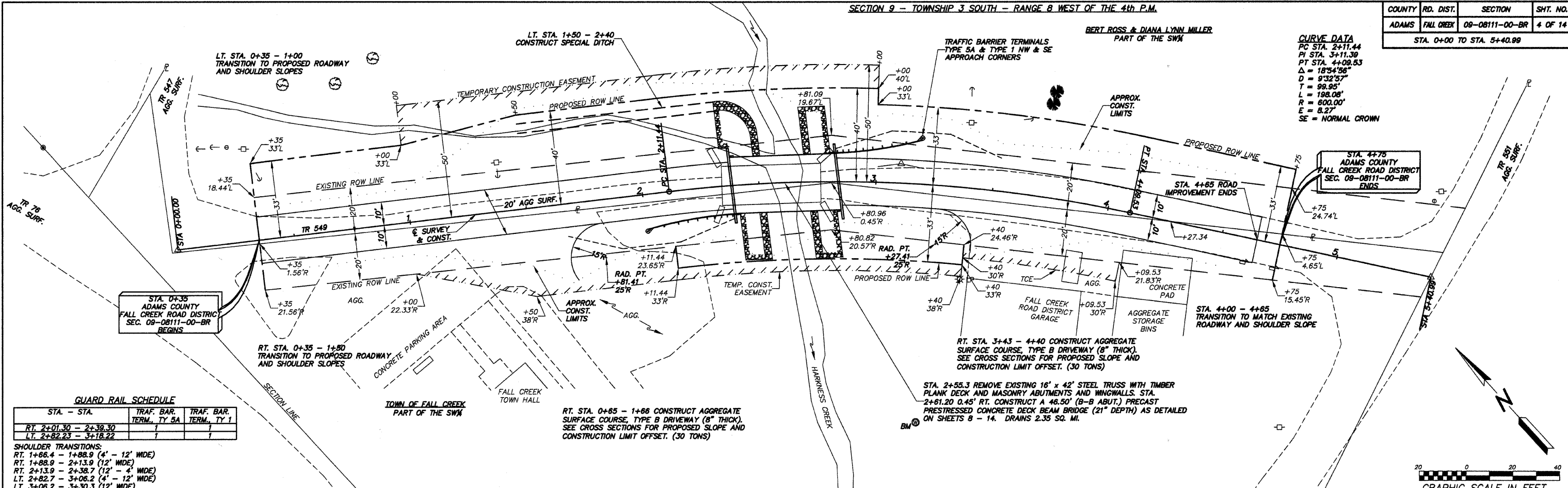


SECTION 9 - TOWNSHIP 3 SOUTH - RANGE 8 WEST OF THE 4th P.M.

COUNTY	RD. DIST.	SECTION	SHT. NO.
ADAMS	FALL CREEK	09-08111-00-BR	4 OF 14

CURVE DATA
 PC STA. 2+11.44
 PI STA. 3+11.39
 PT STA. 4+09.53
 $\Delta = 185^{\circ}4'56''$
 $D = 9'32''57''$
 $T = 99.95'$
 $L = 198.08'$
 $R = 600.00'$
 $E = 8.27'$
 SE = NORMAL CROWN



GUARD RAIL SCHEDULE

STA. - STA.	TRAF. BAR. TERM. TY 5A	TRAF. BAR. TERM. TY 1
RT. 2+01.30 - 2+38.30		
LT. 2+82.23 - 3+18.22		

SHOULDER TRANSITIONS:
 RT. 1+86.4 - 1+88.9 (4' - 12' WIDE)
 RT. 1+88.9 - 2+13.9 (12' - 4' WIDE)
 RT. 2+13.9 - 2+38.2 (12' - 4' WIDE)
 LT. 2+82.7 - 3+06.2 (4' - 12' WIDE)
 LT. 3+06.2 - 3+30.3 (12' - 4' WIDE)
 LT. 3+30.3 - 3+52.3 (12' - 4' WIDE)

SECTION 9 - TOWNSHIP 3 SOUTH - RANGE 8 WEST OF THE 4th P.M.

