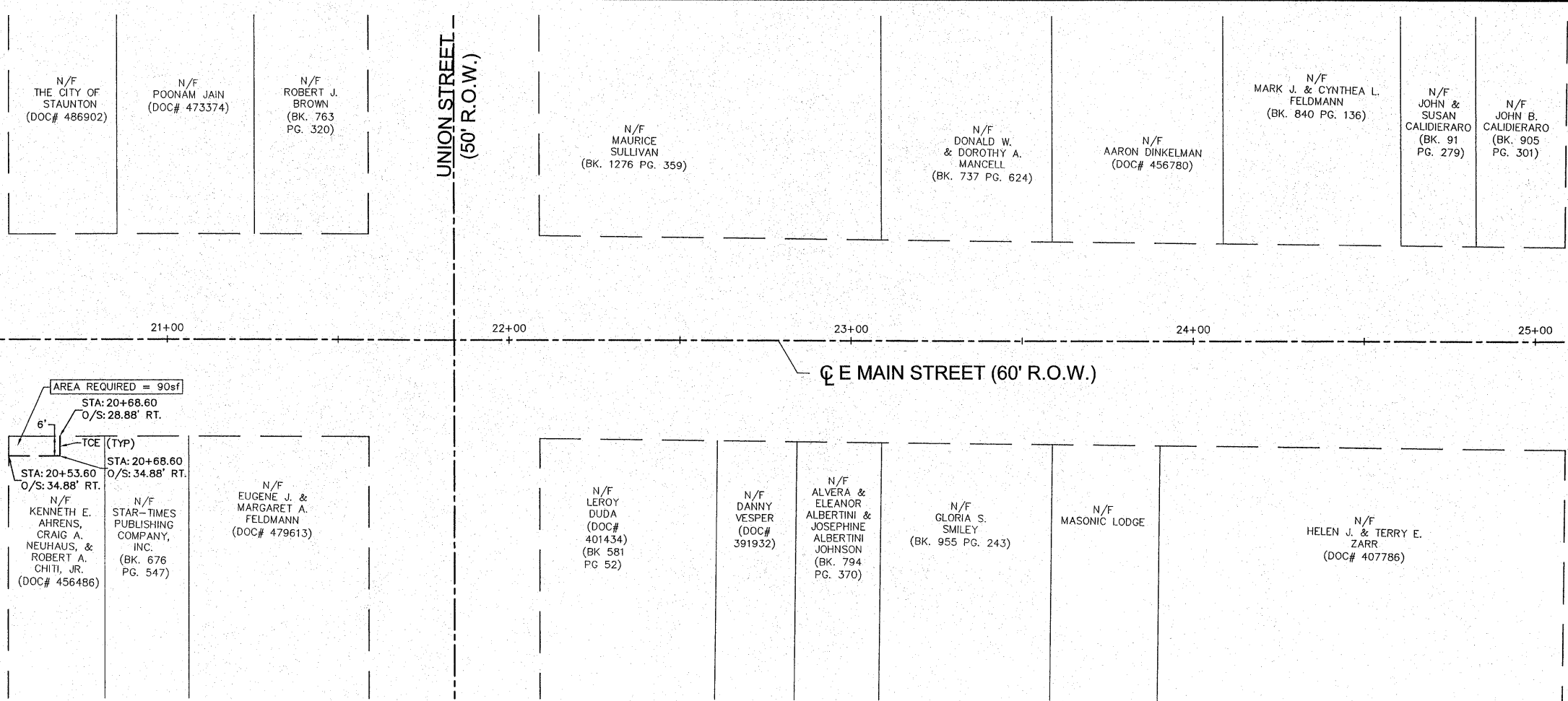


MATCH LINE STA. 20+40



AREA REQUIRED = 90sf
 STA: 20+68.60
 O/S: 28.88' RT.

6"
 TCE (Typ)
 STA: 20+53.60
 O/S: 34.88' RT.

N/F KENNETH E. AHRENS, CRAIG A. NEUHAUS, & ROBERT A. CHITI, JR. (DOC# 456486)

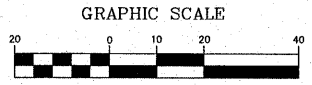
N/F STAR-TIMES PUBLISHING COMPANY, INC. (BK. 676 PG. 547)

N/F EUGENE J. & MARGARET A. FELDMANN (DOC# 479613)

UNION STREET
(50' R.O.W.)

LAUREL STREET
(50' R.O.W.)

MATCH LINE STA. 25+80



FILE NAME = 01819-301	USER NAME = Webster, Chris	DESIGNED - JMV	REVISED -
	PLOT SCALE = 1:1	DRAWN - CAW	REVISED -
	PLOT DATE = 12/14/2009	CHECKED - DLK	REVISED -
		DATE - 11/25/09	REVISED -

STATE OF ILLINOIS
DEPARTMENT OF TRANSPORTATION

RIGHT-OF-WAY

SCALE: 1:20 SHEET NO.17 OF 29 SHEETS STA. 20+40 TO STA. 20+70

F.A.U. RTE. 8136	SECTION 09-00036-02-PV	COUNTY MACOUPIN	TOTAL SHEETS 29	SHEET NO. 17
CONTRACT NO. 93521				
FED. ROAD DIST. NO. 6 ILLINOIS FED. AID PROJECT				