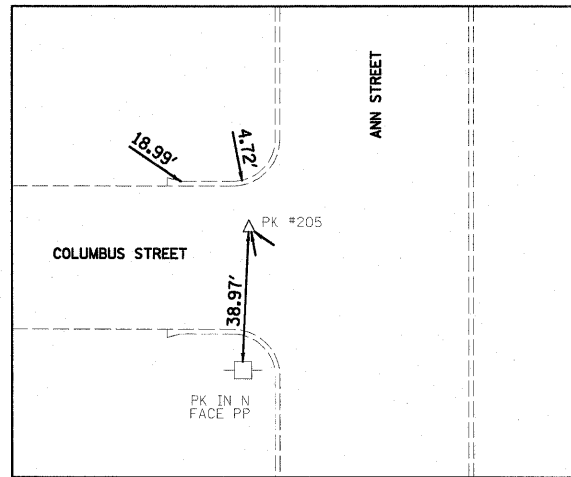
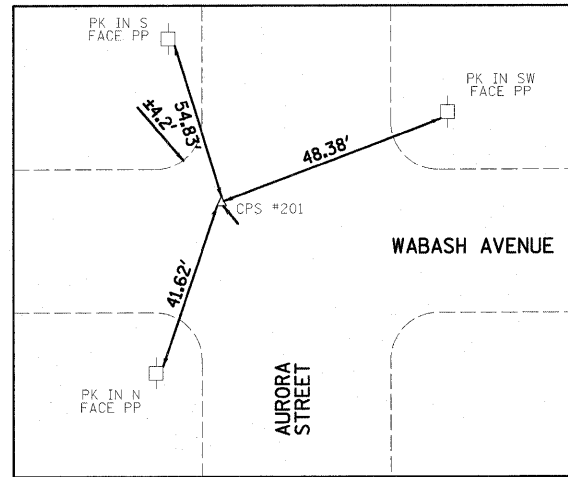


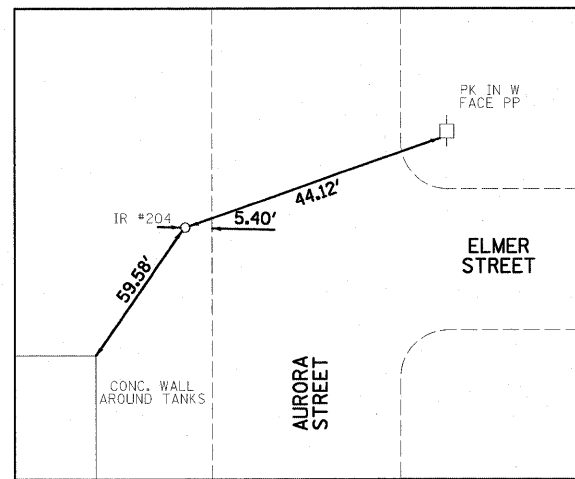
CHISELED "X" #200 / N 1537687.783 / E 903970.117
 STA. 9+86.05 / 9.49' RT
 PK #206 / N 1537687.515 / E 903959.983
 STA. 9+85.81 / 0.64' LT



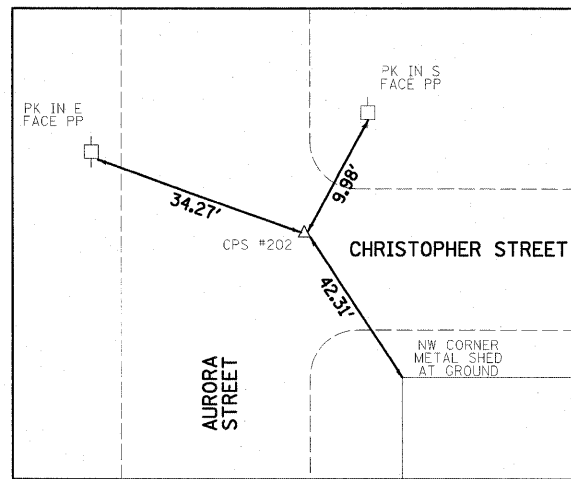
PK #205 / N 1538007.715 / E 904235.983
 STA. 202+76.18 / 10.79' LT



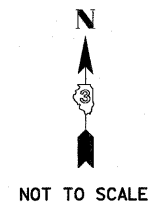
CPS #201 / N 1538302.529 / E 903942.465
 STA. 16+00.88 / 16.22' LT



IR #204 / N 1539300.350 / E 903941.351
 STA. 25+98.70 / 14.20' LT



CPS #202 / N 1538668.851 / E 903973.170
 STA. 19+67.10 / 15.63' RT



NOT TO SCALE

BENCHMARKS:

1. CHISELED "X" #200 IN MIDDLE OF AURORA ON S SIDE INDIANA ELEV=647.06 (BK PEO-102/6)
2. RR SPIKE IN EAST FACE OF POWER POLE IN NW QUAD OF COLUMBUS ST AND AURORA ST ELEV=646.16 (BK PEO-102/6)
3. RR SPIKE IN WEST FACE OF POWER POLE IN NE QUAD OF CHRISTOPHER ST AND AURORA ST ELEV=645.43 (BK PEO-102/6)
4. RR SPIKE IN EAST FACE OF POWER POLE ON THE W SIDE OF AURORA ST NEAR THE S SIDE OF ELMER ST ELEV=645.13 (BK PEO-102/7)
5. TOP OF OPER NUT ON FH IN SE QUAD OF WABASH ST AND AURORA ST ELEV=648.08 (BK PEO-102/7)

P:\City_of_Pontiac\2008\08080330-AuroraStreet.dgn

FILE NAME = 08080330-ControlTies.dgn	USER NAME = #USER#	DESIGNED - DWR/JDA	REVISED -	STATE OF ILLINOIS DEPARTMENT OF TRANSPORTATION	CITY OF PONTIAC - AURORA STREET (FAU 6319) CONTROL AND SURVEY TIES		F.A.U. RTE.	SECTION	COUNTY	TOTAL SHEETS	SHEET NO.
	PLOT SCALE = #SCALE#	DRAWN - JTC	REVISED -		6319	08-00091-00-RP	LIVINGSTON	31	5		
PLOT DATE = 3/25/2010	DATE - 03/25/10	CHECKED - ERB	REVISED -	SCALE: N.T.S.	SHEET NO. OF SHEETS	STA. 10+18 TO STA. 25+59.50	FED. ROAD DIST. NO. ILLINOIS FED. AID PROJECT				
		REVISIED -	REVISIED -	CONTRACT NO. 87404							