

FAP R.T.E.	SECTION	COUNTY	TOTAL SHEETS	SHEET NO.
853	D9 CM BRIDGE REPAIR 2010-2	FRANKLIN	16	1
FED. ROAD DIST. NO. 7		ILLINOIS	CONTRACT NO. 78179	

**STATE OF ILLINOIS**  
**DEPARTMENT OF TRANSPORTATION**  
**DIVISION OF HIGHWAYS**

**PROPOSED**  
**HIGHWAY PLANS**

**F.A.P. 853 (IL 14)**  
**SECTION D9 CM BRIDGE REPAIR 2010-2**

**BACKWALL & APPROACH PAVEMENT**  
**FRANKLIN COUNTY**

C-99-034-10

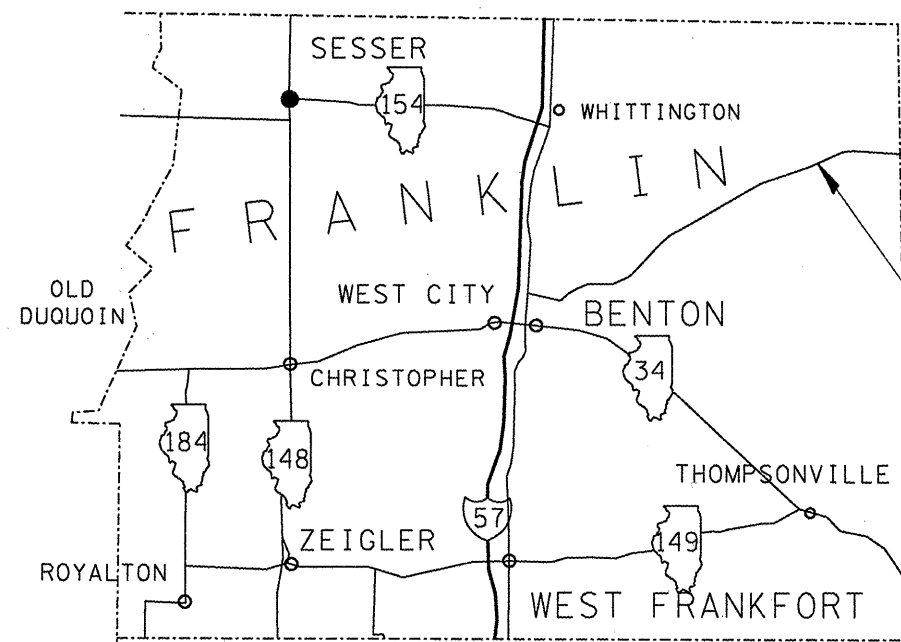
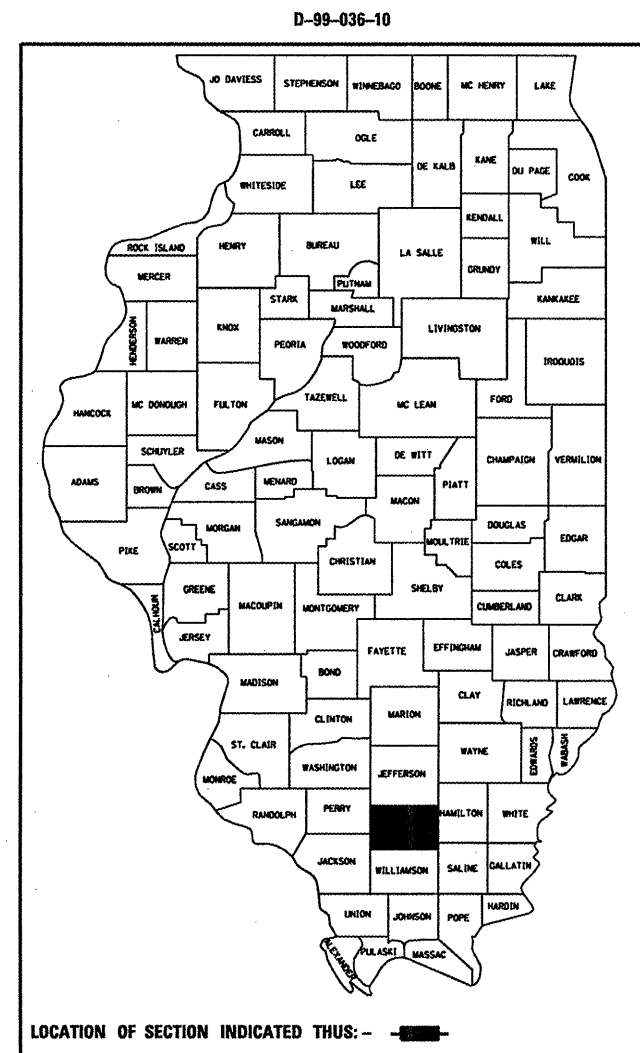
FOR INDEX OF SHEETS, SEE SHEET NO. 2

**028-0031**

NORTHERN TOWNSHIP

INVENTORY RATING 29.3  
OPERATING RATING 48.1

2009 ADT = 2550  
11% TRUCKS



**IMPROVEMENT LOCATION**  
**STRUCTURE NO. 028-0031**

J.U.L.I.E.  
JOINT UTILITY LOCATION INFORMATION FOR EXCAVATION  
1-800-892-0123  
OR 811

PROJECT ENGINEER Joe Zdankiewicz  
PROJECT MANAGER Richard Brasel

CONTRACT NO. 78179

STATE OF ILLINOIS  
DEPARTMENT OF TRANSPORTATION  
DIVISION OF HIGHWAYS

SUBMITTED 4-1-10  
May C. Rumi  
DEPUTY DIRECTOR OF HIGHWAYS, REGION ENGINEER

May 7 2010  
Scott E. Stitt, P.E.  
acting ENGINEER OF DESIGN AND ENVIRONMENT

May 7 2010  
Christine M. Reed  
DIRECTOR OF HIGHWAYS, CHIEF ENGINEER

**PRINTED BY THE AUTHORITY**  
**OF THE STATE OF ILLINOIS**

INDEX OF SHEETS

SHEET NO.	DESCRIPTION
1	COVER
2	INDEX OF SHEETS, STANDARDS
3	GENERAL NOTES
4	SUMMARY OF QUANTITIES
5	HOT-MIX ASPHALT MIX DESIGN
6	GENERAL ELEVATION AND PLAN SHOWING REMOVAL
7	REMOVAL SECTION VIEWS
8	BACKWALL REMOVAL PLAN VIEW
9	GENERAL PLAN
10, 11	APPROACH SLAB DETAILS
12	BACKWALL PLAN VIEW
13	BACKWALL SECTION VIEW
14	TYPICAL BACKFILL, TEMPORARY SHEET PILING
15	BAR SPLICER DETAILS
16	TEMPORARY CONCRETE BARRIER

STANDARDS

- 420001-07 PAVEMENT JOINTS
- 420401-08 BRIDGE APPROACH PAVEMENT CONNECTOR
- 420601-05 24 FT PAVEMENT
- 421001-02 BAR REINFORCEMENT FOR CRC PAVEMENT
- 631046-04 TRAFFIC BARRIER TERMINAL, TYPE 10 (FOR INFORMATION)
- 701321-10 LANE CLOSURE, 2L2W, BRIDGE REPAIR + BARRIER
- 701901-01 TRAFFIC CONTROL DEVICES
- 704001-06 TEMPORARY CONCRETE BARRIER
- 701201-03

Prepared By: Joe Zdaniewicz  
DISTRICT STUDIES & PLANS ENGINEER

Examined By: Joe Zdaniewicz  
DISTRICT LAND ACQUISITION ENGINEER

Examined By: Carrie Nelson  
DISTRICT PROGRAM DEVELOPMENT ENGINEER

Examined By: Walt DeG...  
DISTRICT OPERATIONS ENGINEER

Examined By: Jim Smother...  
DISTRICT CONSTRUCTION ENGINEER

Examined By: Bruce...  
DISTRICT MATERIALS ENGINEER

Examined By: Jim Smother...  
DISTRICT PROJECT IMPLEMENTATION ENGINEER

Examined By: William D. Stanton  
ASSISTANT REGIONAL ENGINEER

Approved By: Nigel...  
DEPUTY DIRECTOR OF HIGHWAYS, REGION 5 ENGINEER

April 1 20 10  
DATE

## GENERAL NOTES

FACTORS USED FOR ESTIMATING PLAN QUANTITIES ARE AS FOLLOWS AND SHALL NOT BE USED FOR THE BASIS OF FINAL QUANTITIES:

All Hot-Mix Asphalt	2.016 Tons/Cu. Yd.
All Aggregate	2.05 Tons/Cu. Yd.
Bituminous Materials:	
On Pavement	0.09 Gal./Sq. Yd.
Intermediate Lifts (Fog Coat)	0.04 Gal./Sq. Yd.
On Aggregate Surface	0.32 Gal./Sq. Yd.
Aggregate (Prime Coat)	0.0015 Tons/Sq. Yd.

THE COST OF ANY SAW CUTS MADE TO COMPLETE THE WORK AS DESCRIBED IN PLAN DETAILS SHALL NOT BE PAID FOR SEPARATELY BUT SHALL BE INCLUDED IN THE VARIOUS PAY ITEMS INVOLVED.

REINFORCEMENT BARS SHALL CONFORM TO THE REQUIREMENTS OF ASTM A 706 Gr 60 (IL MODIFIED).

COMMITMENTS: NONE

EARTHWORK COMPACTION SHALL BE TO THE SATISFACTION OF THE ENGINEER.

THE CENTERLINE PAVEMENT MARKING SHOULD BE REMOVED FROM THE STOP BAR TO THE SAND ATTENUATORS OR DRUMS.

ANY TIME THE CONCRETE BARRIER IS NOT IN THE PROPER POSITION, FLAGGERS SHALL BE IN PLACE TO CONTROL TRAFFIC, AND THE TEMPORARY TRAFFIC SIGNALS SHALL BE SET TO FLASH ALL RED.

CONSTRUCTION OF PRE- STAGE TEMPORARY SHOULDERS SHALL BE COMPLETED PRIOR TO OPERATION OF TEMPORARY BRIDGE TRAFFIC SIGNALS.

TEMPORARY RUMBLE STRIPS ARE REQUIRED AS SHOWN ON TRAFFIC CONTROL STANDARD 701321.

EXTRA CONES OR BARRELS MAY BE REQUIRED TO CHANNEL TRAFFIC AT PRIVATE ENTRANCES AS DIRECTED BY THE ENGINEER. ALL TRAFFIC CONTROL DEVICES ARE INCLUDED IN THE COST OF TRAFFIC CONTROL STANDARDS 701201 AND 701321, AND WILL NOT BE PAID FOR SEPARATELY.

IN ADDITION TO THE REQUIREMENTS OF ARTICLE 107.16 THE CONTRACTOR SHALL PROTECT THE SURFACE OF ALL BRIDGE DECKS AND BRIDGE APPROACH PAVEMENTS IN A MANNER SATISFACTORY TO THE ENGINEER BEFORE ANY EQUIPMENT IS ALLOWED TO CROSS THE STRUCTURE. PROTECTION SHALL BE PROVIDED FOR ALL EQUIPMENT AS DEFINED IN ARTICLE 101.16 REGARDLESS IF TRACK MOUNTED OR WHEELED.

THE ADVANCE DETECTOR LOOPS ARE TYPICALLY LOCATED 275 FEET IN ADVANCE OF THE STOP BAR. THE BUREAU OF OPERATIONS MUST APPROVE THE LOOP LOCATIONS PRIOR TO INSTALLATION.

TRAFFIC CONTROL SIGNS SHALL BE PLACED SO THAT THEY DO NOT INTERFERE WITH EXISTING SIGNS OR FLASHING BEACONS. THE DIMENSIONS BETWEEN SIGNS MAY BE MODIFIED SLIGHTLY SO AS TO AVOID CONFLICTS WITH EXISTING SIDE ROADS, COMMERCIAL ENTRANCES, AND PRIVATE ENTRANCES. THE BUREAU OF OPERATIONS SHOULD APPROVE FINAL PLACEMENT OF TRAFFIC CONTROL SIGNING.

PLAN DIMENSIONS AND DETAILS RELATIVE TO EXISTING PLANS ARE SUBJECT TO ROUTINE VARIATIONS. THE CONTRACTOR SHALL FIELD VERIFY EXISTING DIMENSIONS AND DETAILS AFFECTING NEW CONSTRUCTION AND MAKE NECESSARY APPROVED ADJUSTMENTS PRIOR TO CONSTRUCTION OR ORDERING OF MATERIALS. SUCH VARIATIONS SHALL NOT BE CAUSE FOR ADDITIONAL COMPENSATION FOR A CHANGE IN SCOPE OF THE WORK, HOWEVER, THE CONTRACTOR WILL BE PAID FOR THE QUANTITY ACTUALLY FURNISHED AT THE UNIT PRICE BID FOR THE WORK.

FILE NAME =	USER NAME = gautneyrk	DESIGNED -	REVISED -	<b>STATE OF ILLINOIS DEPARTMENT OF TRANSPORTATION</b>					
as\pwork\PWIDOT\GAUTNEYRK\d0174138\78	79-sheets.dgn	DRAWN -	REVISED -						
	PLOT SCALE = 2727.3089' / IN.	CHECKED -	REVISED -						
	PLOT DATE = 1/25/2018	DATE -	REVISED -						
SCALE: _____ SHEET NO. _____ OF _____ SHEETS STA. _____ TO STA. _____					F.A.P. RTE.	SECTION	COUNTY	TOTAL SHEETS	SHEET NO.
					853	09 CM BRIDGE REPAIR 2010-2	FRANKLIN	16	3
					CONTRACT NO. 78179				
					ILLINOIS FED. AID PROJECT				

# SUMMARY OF QUANTITIES

SFTY-2A

CODE NO.	CONSTRUCTION TYPE CODE: SFTY-2A ITEM DESCRIPTION	100% STATE	
		UNIT	QUANTITY
20700400	POROUS GRANULAR EMBANKMENT, SPECIAL	CU YD	39.2
42001430	BRIDGE APPROACH PAVEMENT CONNECTOR (FLEXIBLE)	SQ YD	45.2
42101300	PROTECTIVE COAT	SQ YD	142
44000100	PAVEMENT REMOVAL	SQ YD	109.3
44004250	PAVED SHOULDER REMOVAL	SQ YD	58.5
48203037	HOT-MIX ASPHALT SHOULDERS, 10"	SQ YD	112
50102400	CONCRETE REMOVAL	CU YD	3.2
50200100	STRUCTURE EXCAVATION	CU YD	39.2
50300225	CONCRETE STRUCTURES	CU YD	16
50300255	CONCRETE SUPERSTRUCTURE	CU YD	54.9
50800205	REINFORCEMENT BARS, EPOXY COATED	POUND	14,810
50800515	BAR SPLICERS	EACH	117
51205200	TEMPORARY SHEET PILING	SQ FT	139.8
63302905	REMOVE AND RE- ERECT TRAFFIC BARRIER TERMINAL, TYPE 10	EACH	2
67000400	ENGINEER'S FIELD OFFICE, TYPE A	CAL MO	3
67100100	MOBILIZATION	L SUM	1
70100405	TRAFFIC CONTROL AND PROTECTION, STANDARD 701321	EACH	1
70100450	TRAFFIC CONTROL AND PROTECTION, STANDARD 701201	L SUM	1
70106500	TEMPORARY BRIDGE TRAFFIC SIGNALS	EACH	1
70106800	CHANGEABLE MESSAGE SIGN	CAL MO	3
70300220	TEMPORARY PAVEMENT MARKING - LINE 4"	FOOT	546
70301000	WORK ZONE PAVEMENT MARKING REMOVAL	SQ FT	209
70400100	TEMPORARY CONCRETE BARRIER	FOOT	260
70400200	RELOCATE TEMPORARY CONCRETE BARRIER	FOOT	260
* 78001110	PAINT PAVEMENT MARKING - LINE 4"	FOOT	687
Z0030250	IMPACT ATTENUATOR, TEMPORARY (NON-REDIRECTIVE), TEST LEVEL 3	EACH	2
Z0030350	IMPACT ATTENUATORS, RELOCATE (NON-REDIRECTIVE), TEST LEVEL 3	EACH	2

FILE NAME = c:\pwwork\pwwidot\GAUTNEYRK\d0174138\78	USER NAME = gautneyrk	DESIGNED - ---	REVISED - ---
79-sheets.dgn	DRAWN - ---	REVISED - ---	REVISED - ---
PLOT SCALE = 2727.2619' / IN.	CHECKED - ---	REVISED - ---	REVISED - ---
PLOT DATE = 1/25/2018	DATE - ---	REVISED - ---	REVISED - ---

**STATE OF ILLINOIS  
DEPARTMENT OF TRANSPORTATION**

SCALE: _____	SHEET NO. _____ OF _____ SHEETS	STA. _____ TO STA. _____
--------------	---------------------------------	--------------------------

<i>*Specialty Items</i>		<i>Rev.</i>	
F.A.P. RTE.	SECTION	COUNTY	TOTAL SHEETS
853	09 CM BRIDGE REPAIR 2010-2	FRANKLIN	16
CONTRACT NO. 78179			SHEET NO. 4
ILLINOIS FED. AID PROJECT			

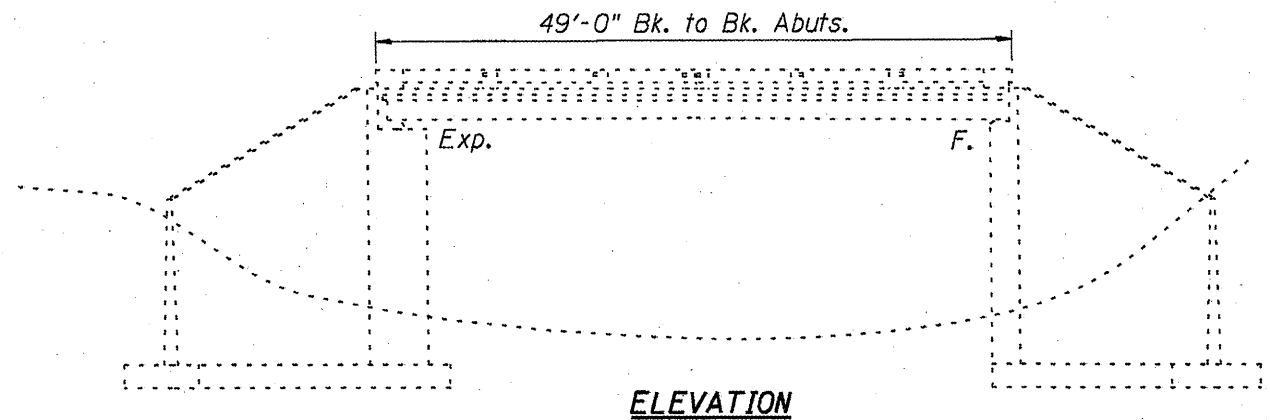
PAIN T PAVEMENT MARKING - LINE 4"

FOOT	
YELLOW	WHITE
141	546

HOT-MIX ASPHALT MIX DESIGN

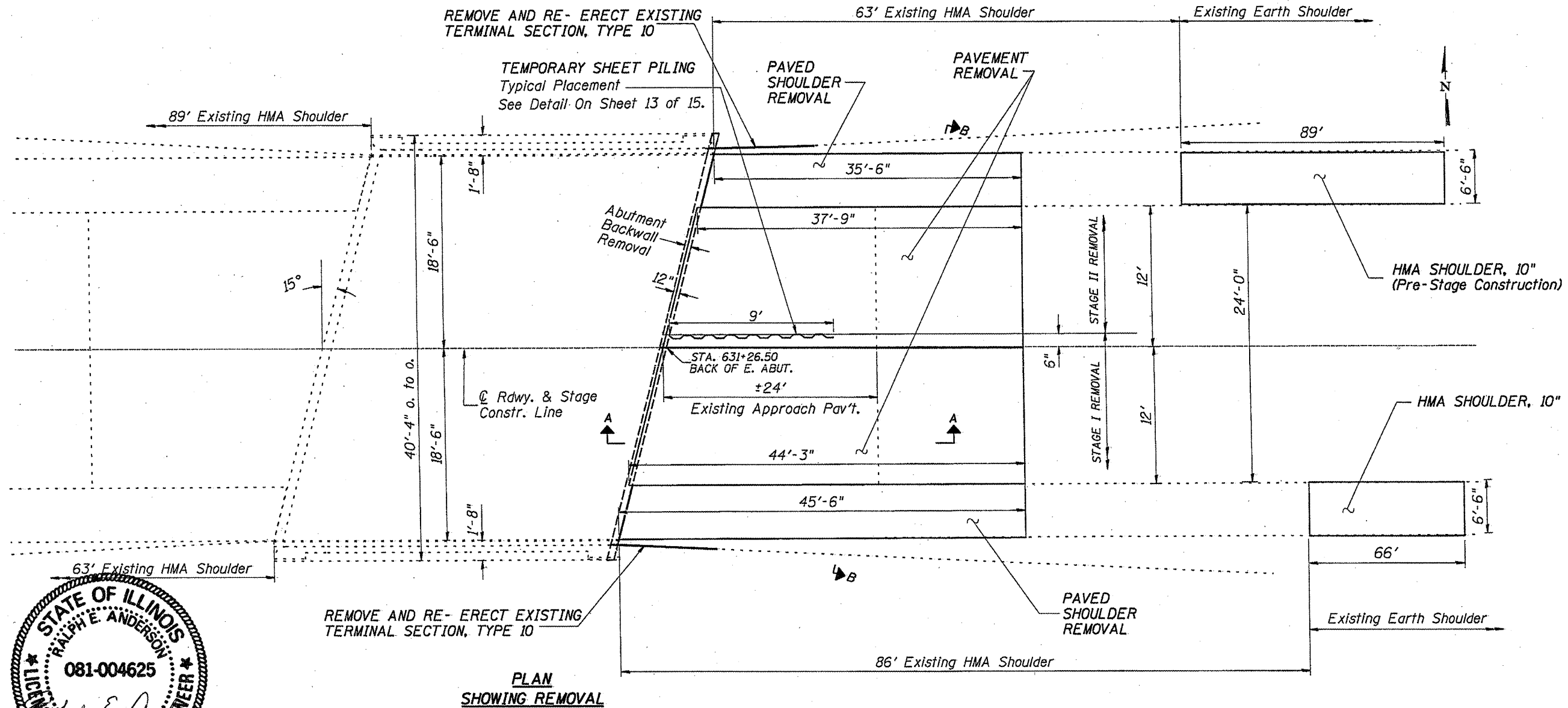
LOCATION:	TEMPORARY HOT-MIX ASPHALT SHOULDERS
MIXTURE USE(S):	HOT-MIX ASPHALT SHOULDERS
AC/PG:	PG58-22
RAP % (MAX):	50
DESIGN AIR VOIDS:	2.0%, 30 GYRATION
MIXTURE COMPOSITION: (GRADATION MIXTURE)	HMA SHOULDERS
FRICTION AGGREGATE:	NONE

LOCATION:	HOT-MIX ASPHALT SURFACE COURSE
MIXTURE USE(S):	HOT-MIX ASPHALT SURFACE COURSE, MIX C, N 90
AC/PG:	PG64-22
RAP % (MAX):	10
DESIGN AIR VOIDS:	4.0%, 90 GYRATION
MIXTURE COMPOSITION: (GRADATION MIXTURE)	IL-9.5 mm or IL 12.5 mm
FRICTION AGGREGATE:	C SURFACE



**ELEVATION**

See Sheet 7 of 15 for Section A-A.  
See Sheet 7 of 15 for Section B-B.



**PLAN  
SHOWING REMOVAL**



Expires 11/30/2010

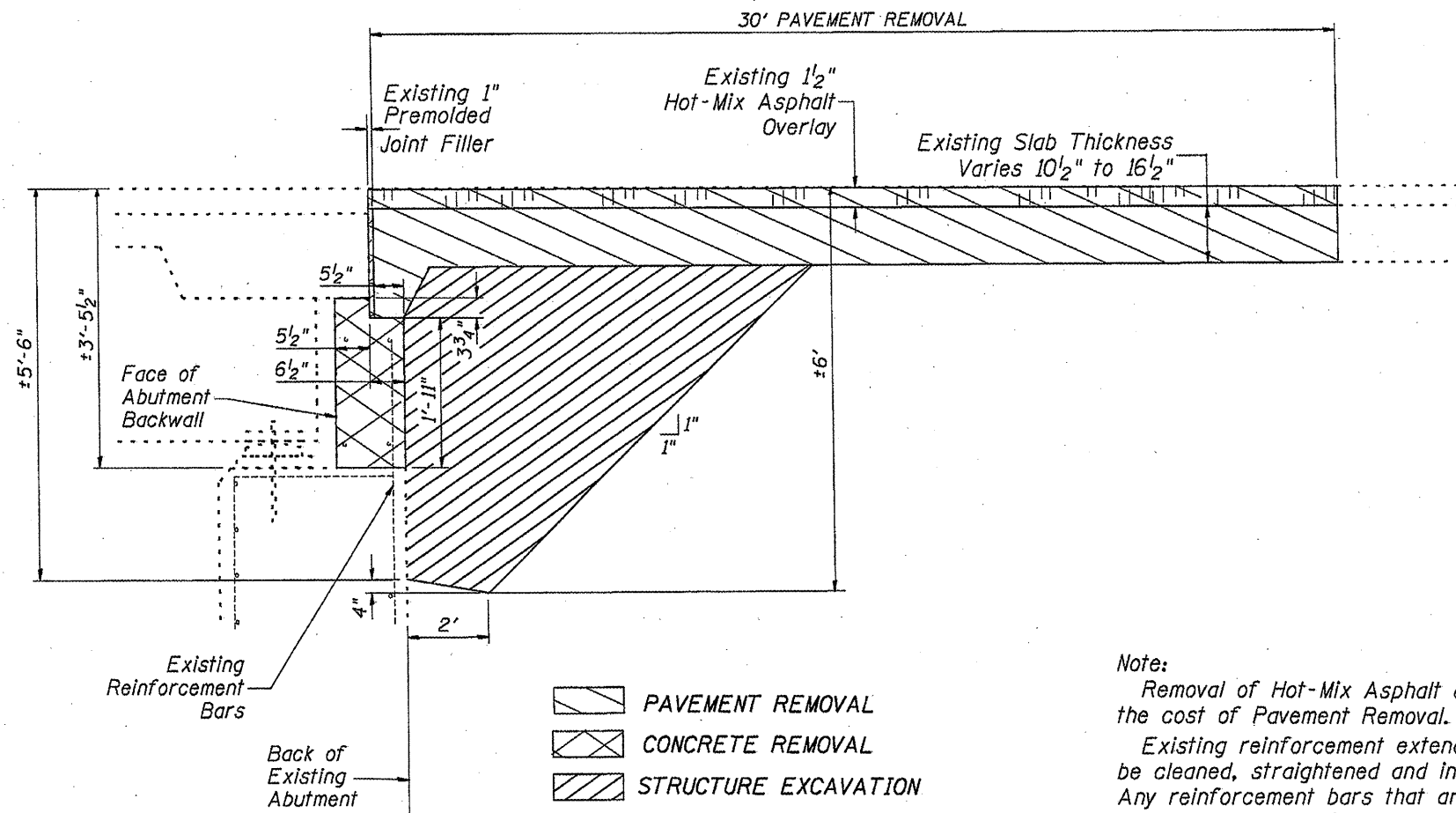
**GENERAL ELEVATION AND PLAN  
SHOWING REMOVAL  
SN. 028-0031**

FILE NAME =	USER NAME = geutneyrk	DESIGNED -	REVISED -
ca:\pkr\work\p\WIDOT\GAUTNEYRK\08174138\7879-sheets.dgn		DRAWN -	REVISED -
	PLOT SCALE = 2727.2439' / IN.	CHECKED -	REVISED -
	PLOT DATE = 4/14/2010	DATE -	REVISED -

**STATE OF ILLINOIS  
DEPARTMENT OF TRANSPORTATION**

SCALE: _____	SHEET NO. _____ OF _____ SHEETS	STA. _____ TO STA. _____
--------------	---------------------------------	--------------------------

F.A.P. RTE.	SECTION	COUNTY	TOTAL SHEETS	SHEET NO.
853	09 CM BRIDGE REPAIR 2010-2	FRANKLIN	15	6
CONTRACT NO. 78179				
ILLINOIS FED. AID PROJECT				



- PAVEMENT REMOVAL
- CONCRETE REMOVAL
- STRUCTURE EXCAVATION

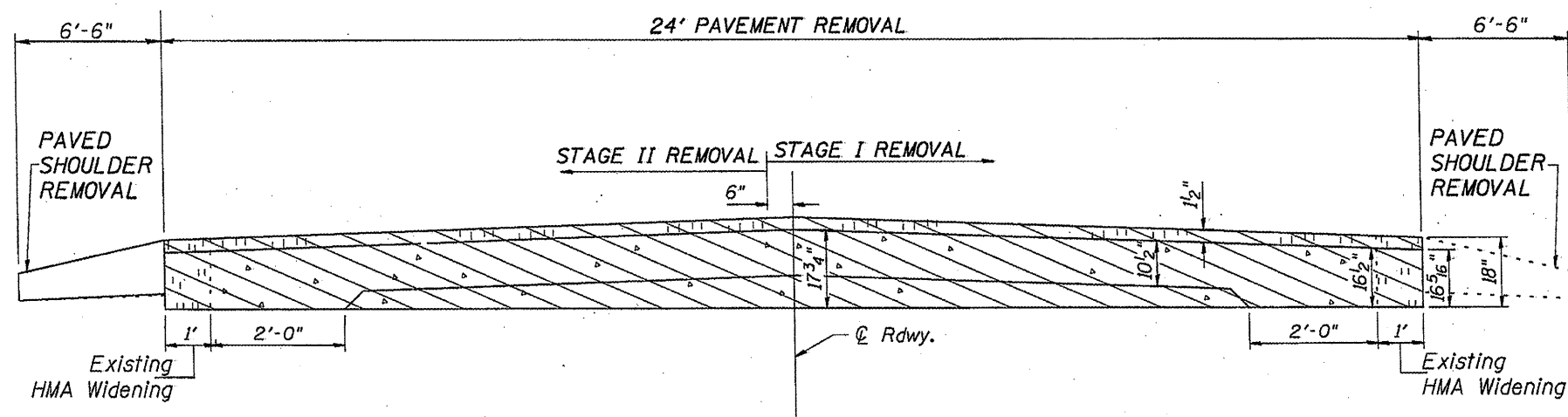
Dimensions Parallel to Centerline of Rdwy.

### SECTION A-A

**Note:**

Removal of Hot-Mix Asphalt and joint filler is included in the cost of Pavement Removal.

Existing reinforcement extending into the removal area shall be cleaned, straightened and incorporated into the new construction. Any reinforcement bars that are damaged during concrete removal shall be replaced with an approved bar splicer or anchorage system. Cost shall be included with Concrete Removal.



### SECTION B-B

LOOKING EAST

Dimensions at Right Angle to Centerline of Rdwy.

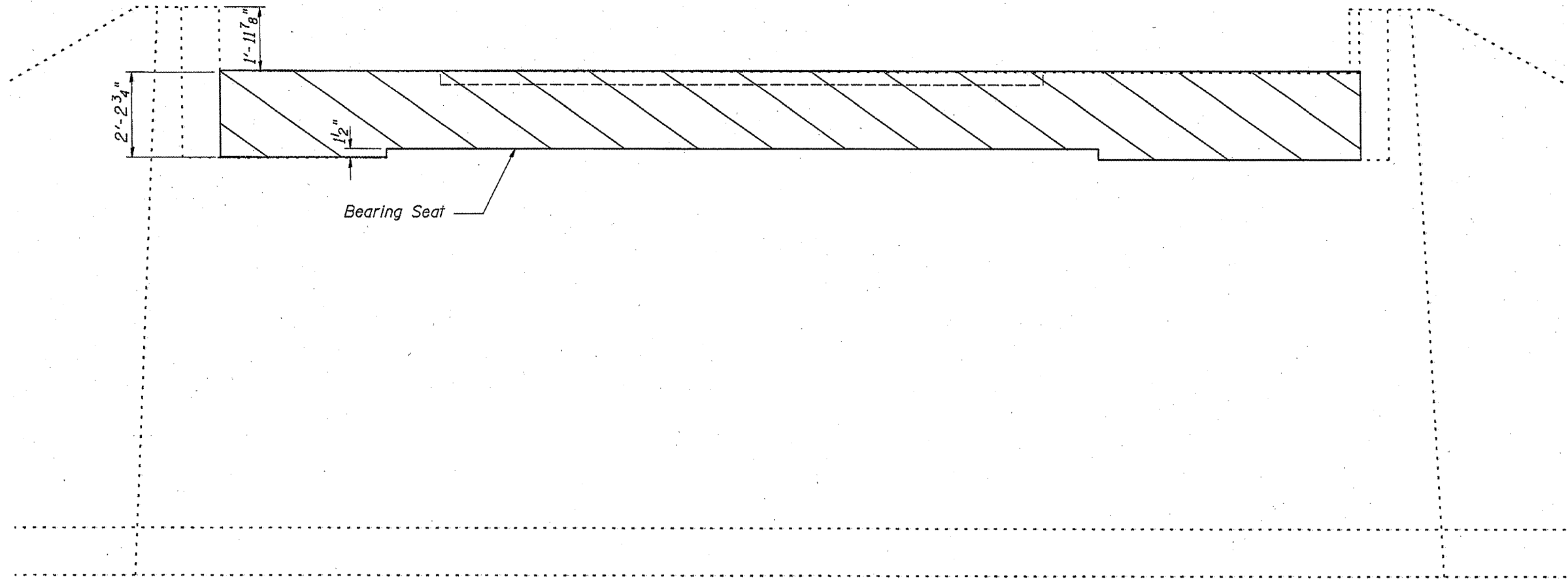
### ABUTMENT AND PAVEMENT REMOVAL SECTION VIEWS

FILE NAME =	USER NAME = geutneyrk	DESIGNED -	REVISOR -
79-sheets.dgn		DRAWN -	REVISOR -
PLOT SCALE = 3/32" = 1' / IN.		CHECKED -	REVISOR -
PLOT DATE = 4/14/2010		DATE -	REVISOR -

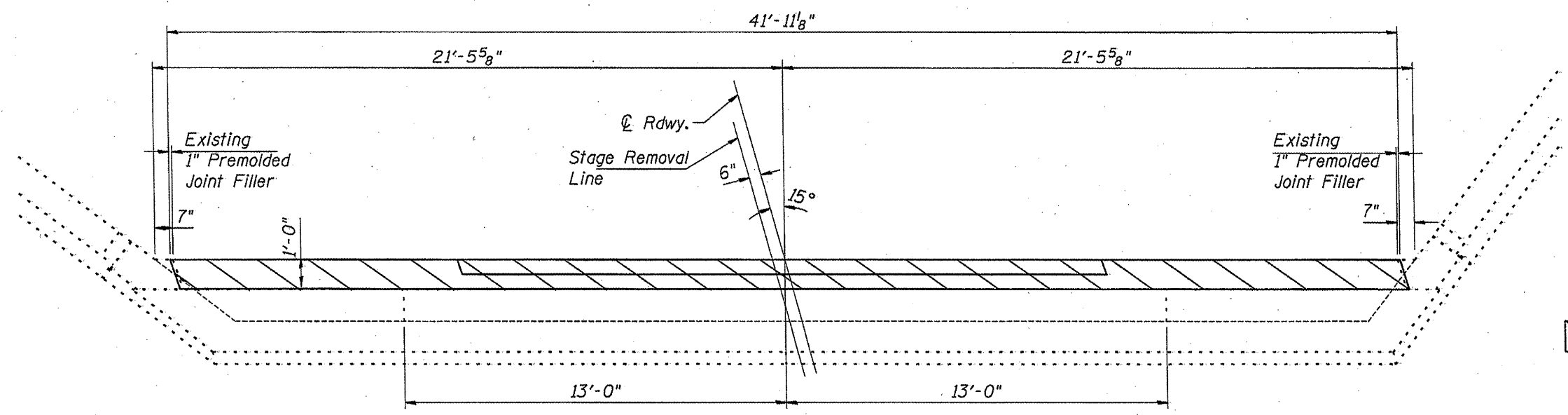
STATE OF ILLINOIS  
DEPARTMENT OF TRANSPORTATION

SCALE: _____	SHEET NO. _____ OF _____ SHEETS	STA. _____ TO STA. _____
--------------	---------------------------------	--------------------------

F.A.P. RTE.	SECTION	COUNTY	TOTAL SHEETS	SHEET NO.
853	09 CM BRIDGE REPAIR 2010-2	FRANKLIN	15	7
CONTRACT NO. 78179				
ILLINOIS FED. AID PROJECT				



ELEVATION



PLAN

 CONCRETE REMOVAL

**EAST ABUTMENT  
BACKWALL REMOVAL  
SN. 028-0031**

FILE NAME =	USER NAME = gautneyrk	DESIGNED -	REVISED -
cf:\pwwork\pwwiddt\GAUTNEYRK\02174138\7879-sheets.dgn		DRAWN -	REVISED -
	PLOT SCALE = 2727.3789' / IN.	CHECKED -	REVISED -
	PLOT DATE = 4/14/2010	DATE -	REVISED -

**STATE OF ILLINOIS  
DEPARTMENT OF TRANSPORTATION**

SCALE: _____	SHEET NO. _____ OF _____ SHEETS	STA. _____ TO STA. _____
--------------	---------------------------------	--------------------------

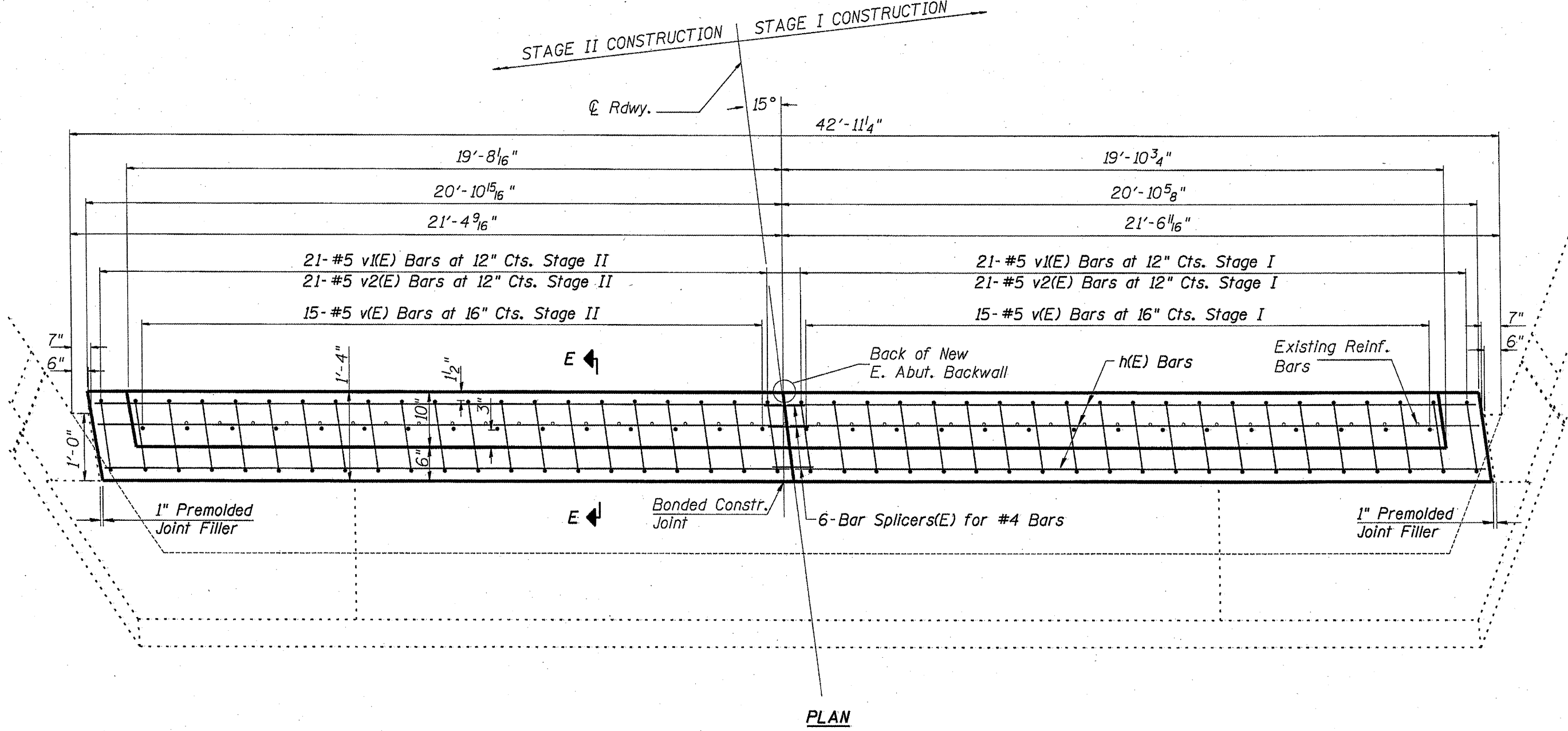
F.A.P. RTE.:	SECTION	COUNTY	TOTAL SHEETS	SHEET NO.
853	09 CM BRIDGE REPAIR 2010-2	FRANKLIN	15	8
ILLINOIS FED. AID PROJECT			CONTRACT NO. 78179	







See Section E-E on Sheet 12 of 15.  
 Abutment Backwall is paid for as Concrete Structures.



PLAN

**EAST ABUTMENT BACKWALL  
 PLAN VIEW**

SN. 028-0031

FILE NAME =	USER NAME = gautneyrk	DESIGNED -	REVISD -
ci:\pwr_work\pwr\dot\gautneyrk\d0174138\7819-sheets.dgn		DRAWN -	REVISD -
PLOT SCALE = 2727.3789' / IN.		CHECKED -	REVISD -
PLOT DATE = 4/16/2010		DATE -	REVISD -

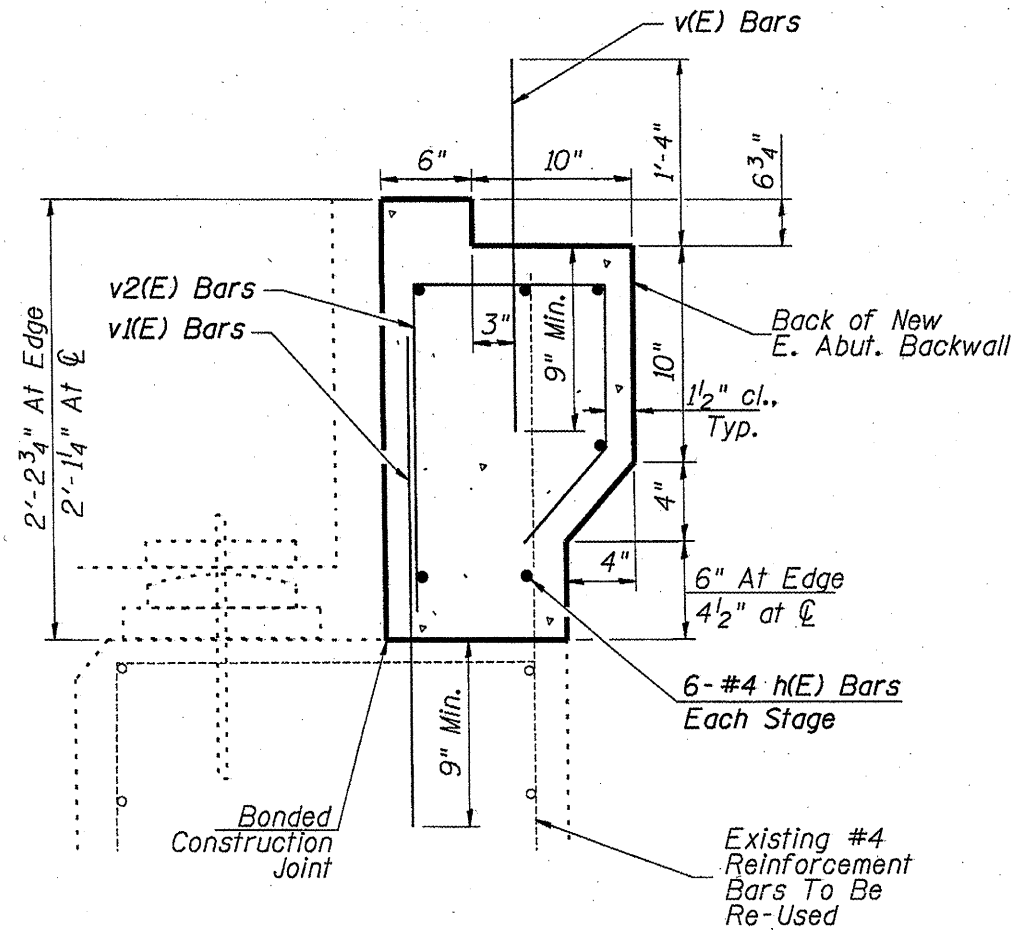
STATE OF ILLINOIS  
 DEPARTMENT OF TRANSPORTATION

SCALE: _____	SHEET NO. _____ OF _____ SHEETS	STA. _____ TO STA. _____
--------------	---------------------------------	--------------------------

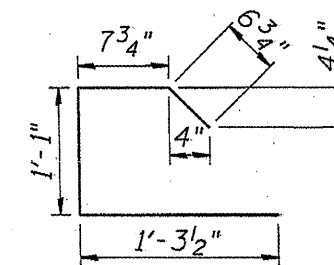
F.A.P. RTE.	SECTION	COUNTY	TOTAL SHEETS	SHEET NO.
853	D9 CM BRIDGE REPAIR 2010-2	FRANKLIN	15	11
CONTRACT NO. 78179				
ILLINOIS FED. AID PROJECT				

**EAST ABUTMENT BACKWALL  
BILL OF MATERIAL**

Bar	No.	Size	Length	Shape
h(E)	12	#4	20'-8"	—
v(E)	30	#5	2'-1"	—
v1(E)	42	#5	2'-1"	—
v2(E)	42	#5	3'-7"	└
Concrete Structures			Cu. Yd.	4.2
Reinforcement Bars, Epoxy Coated			Pound	480



**SECTION E-E**



v2(E) Bar

Epoxy grout v1(E) bars according to Section 584 of the Standard Specifications.  
Cost included in Reinforcement Bars, Epoxy Coated.

Space drilled holes to miss existing reinforcement in the bearing seat.

See Bar Splicer details on Sheet 14 of 15.

**EAST ABUTMENT BACKWALL  
SECTION VIEW**

SN 028-0031

FILE NAME =	USER NAME = gautneyrk	DESIGNED -	REVISED -
c:\pwwork\pwwork\gautneyrk\d0174138\781	9-sheets.dgn	DRAWN -	REVISED -
PLOT SCALE = 2727.2538' / IN.	CHECKED -	REVISED -	REVISED -
PLOT DATE = 4/16/2010	DATE -	REVISED -	REVISED -

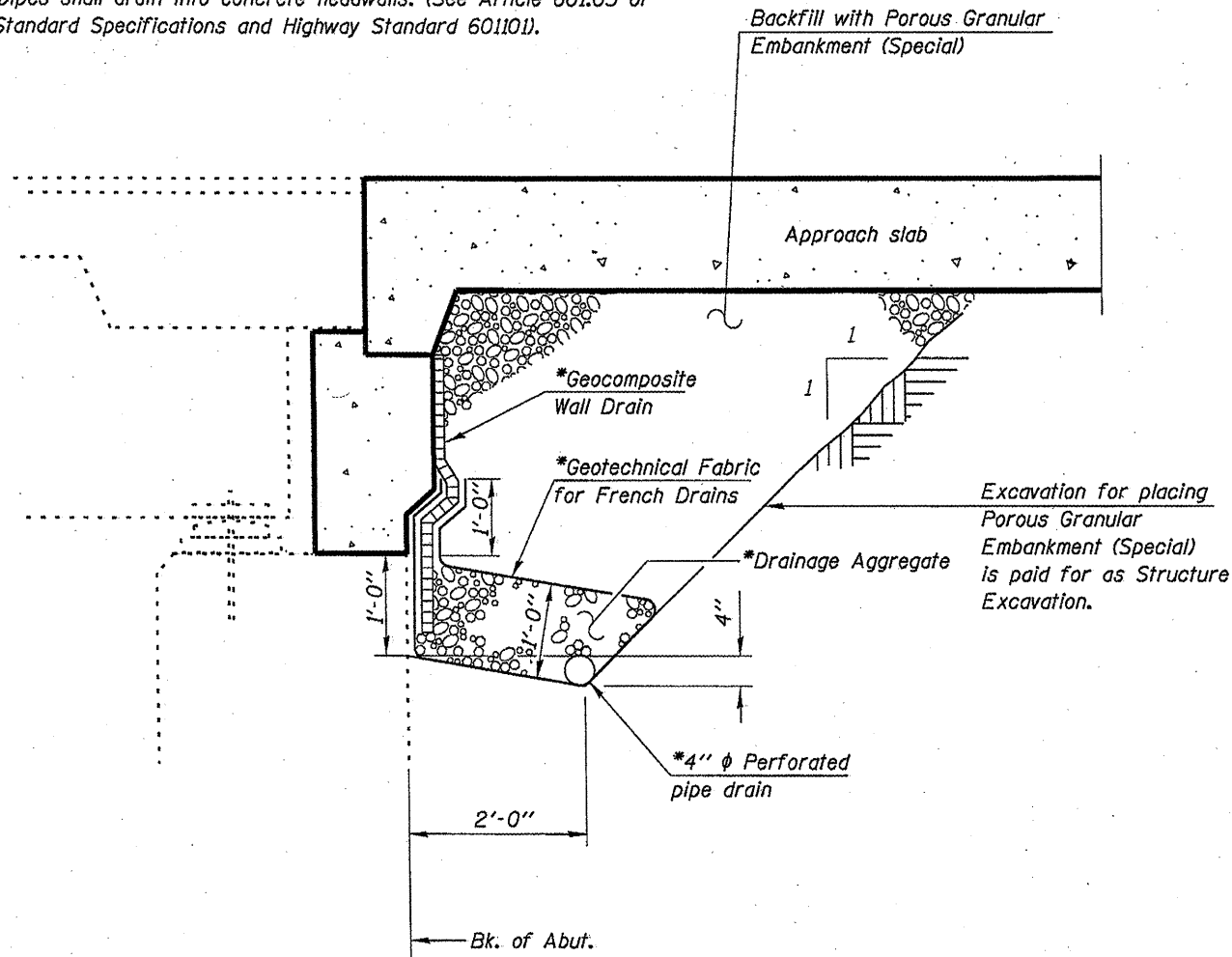
**STATE OF ILLINOIS  
DEPARTMENT OF TRANSPORTATION**

SCALE: _____	SHEET NO. _____ OF _____ SHEETS	STA. _____ TO STA. _____
--------------	---------------------------------	--------------------------

F.A.P. RTE.	SECTION	COUNTY	TOTAL SHEETS	SHEET NO.
853	D9 CM BRIDGE REPAIR 2010-2	FRANKLIN	15	12
ILLINOIS FED. AID PROJECT			CONTRACT NO. 78179	

**Note:**

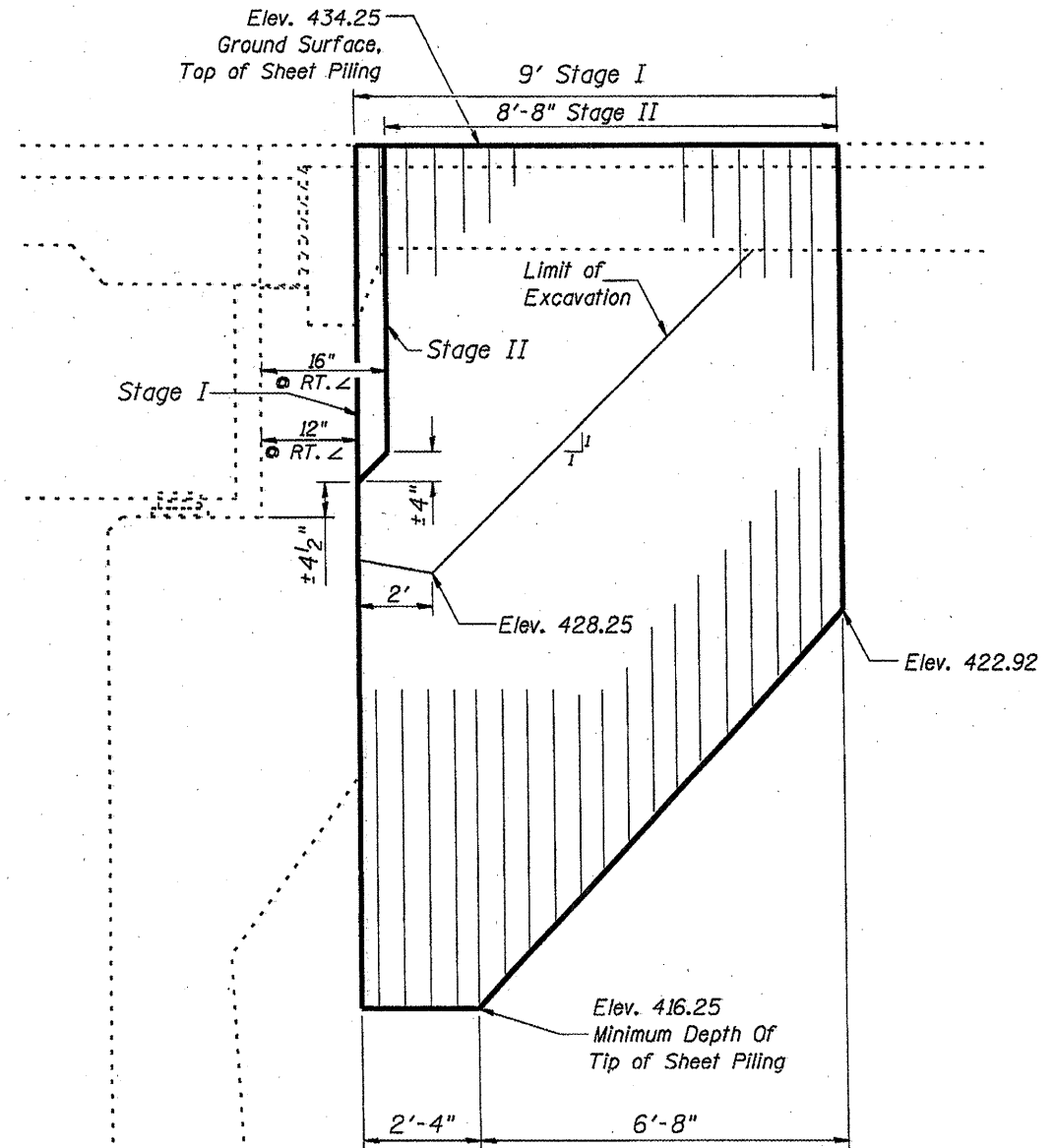
All drainage system components shall extend parallel to the abutment back wall until they intersect the wingwalls or 2'-0" from the end of the wingwalls when the wings are parallel to the abutment. The pipe shall extend under the wingwall, if necessary, until intersecting the side slopes. The pipes shall drain into concrete headwalls. (See Article 601.05 of the Standard Specifications and Highway Standard 601101).



\* Included in the cost of Porous Granular Embankment (Special).

Dimensions parallel to centerline of roadway.

**SECTION THRU EAST ABUTMENT  
SHOWING BACKFILL**



Minimum Section Modulus = 2 in.<sup>3</sup>/ft.  
Minimum Embedment = 6'

If the Contractor chooses to alter the temporary cantilevered sheet piling design requirements shown on the plans, a design submittal including plan details and calculations will be required for review and acceptance by the Engineer.

**TEMPORARY SHEET PILING**  
Dimensions parallel to centerline of roadway.

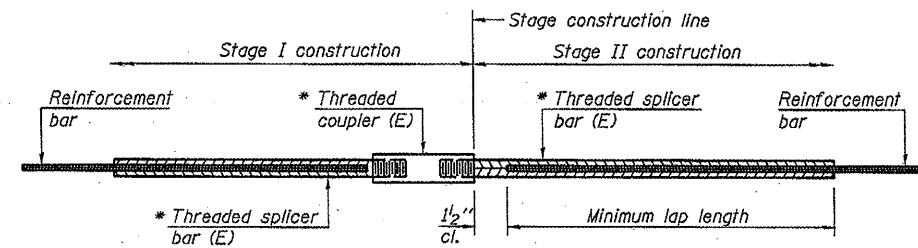
SN.028-0031  
**BACKFILL AND TEMPORARY SHEET PILING**

FILE NAME =	USER NAME = geutneyrk	DESIGNED -	REVISOR -
ct:\pr-work\pados\geutneyrk\d0174138\781	9-shets.dgn	DRAWN -	REVISOR -
	PLOT SCALE = 2727.2439' / IN.	CHECKED -	REVISOR -
	PLOT DATE = 4/16/2010	DATE -	REVISOR -

STATE OF ILLINOIS  
DEPARTMENT OF TRANSPORTATION

SCALE: _____	SHEET NO. _____ OF _____ SHEETS	STA. _____ TO STA. _____
--------------	---------------------------------	--------------------------

F.A.P. RTE.	SECTION	COUNTY	TOTAL SHEETS	SHEET NO.
853	09 CM BRIDGE REPAIR 2010-2	FRANKLIN	15	13
CONTRACT NO. 78179				
ILLINOIS FED. AID PROJECT				



**STANDARD BAR SPLICER ASSEMBLY**

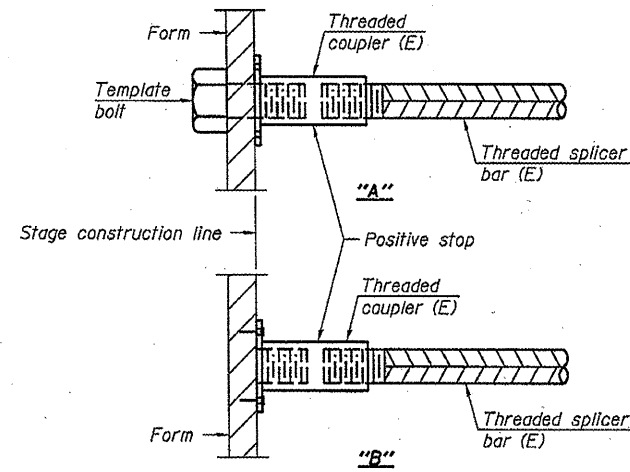
Bar size to be spliced	Minimum Lap Lengths			
	Table 1	Table 2	Table 3	Table 4
3, 4	1'-5"	1'-11"	2'-1"	2'-4"
5	1'-9"	2'-5"	2'-7"	2'-11"
6	2'-1"	2'-11"	3'-1"	3'-6"
7	2'-9"	3'-10"	4'-2"	4'-8"
8	3'-8"	5'-1"	5'-5"	6'-2"
9	4'-7"	6'-5"	6'-10"	7'-9"

- Table 1: Black bar, 0.8 Class C
- Table 2: Black bar, Top bar lap, 0.8 Class C
- Table 3: Epoxy bar, 0.8 Class C
- Table 4: Epoxy bar, Top bar lap, 0.8 Class C

Threaded splicer bar length = min. lap length + 1/2" + thread length

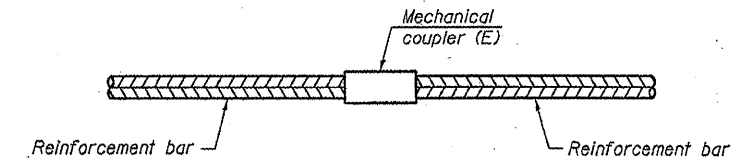
\* Epoxy not required on Bar Splicer Assembly components used in conjunction with black bars.

Location	Bar size	No. assemblies required	Table for minimum lap length
Stage Constr. Line Abutment Backwall	#4	6	2'-4"
Stage Constr. Line Approach Slab	#4	25	2'-4"
	#5	86	2'-7"



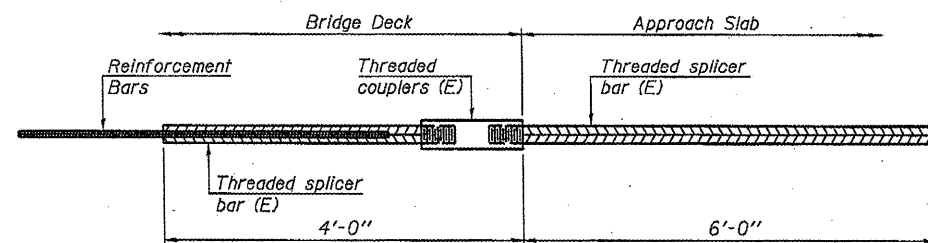
**INSTALLATION AND SETTING METHODS**

- "A": Set bar splicer assembly by means of a template bolt.
- "B": Set bar splicer assembly by nailing to wood forms or cementing to steel forms.
- (E): Indicates epoxy coating.



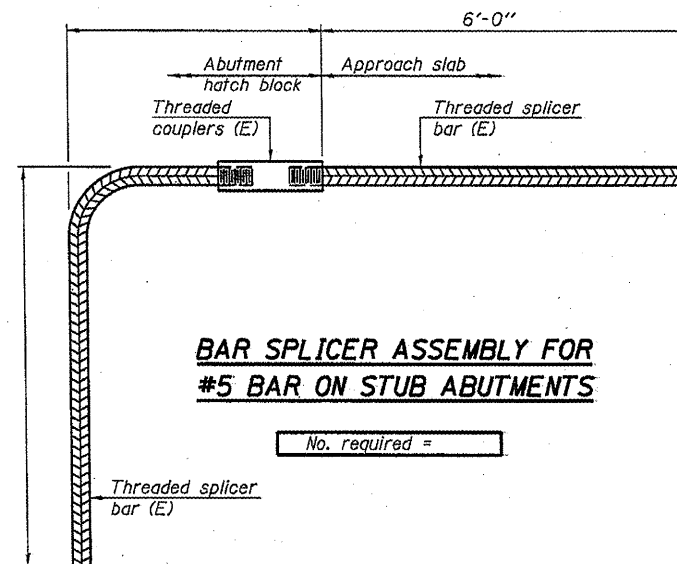
**STANDARD MECHANICAL SPLICER**

Location	Bar size	No. assemblies required



**BAR SPLICER ASSEMBLY FOR #5 BAR ON INTEGRAL OR SEMI-INTEGRAL ABUTMENTS**

No. required =



**BAR SPLICER ASSEMBLY FOR #5 BAR ON STUB ABUTMENTS**

No. required =

**NOTES**

- Splicer bars shall be deformed with Threaded ends and have a minimum 60 ksi yield strength.
- All reinforcement shall be lapped and tied to the splicer bars.
- Bar splicer assemblies shall be epoxy coated according to the requirements for reinforcement bars. See Section 508 of the Standard Specifications.
- See special provision for Mechanical Splicers.
- See approved list of bar splicer assemblies and mechanical splicers for alternatives.

**BAR SPLICER ASSEMBLY AND MECHANICAL SPLICER DETAILS  
STRUCTURE NO. 028-0031**

BSD-1

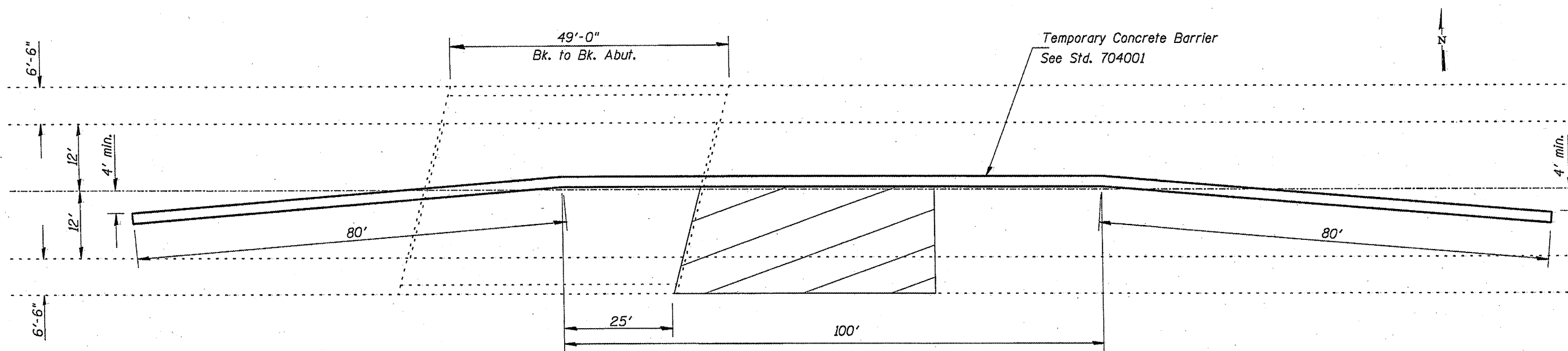
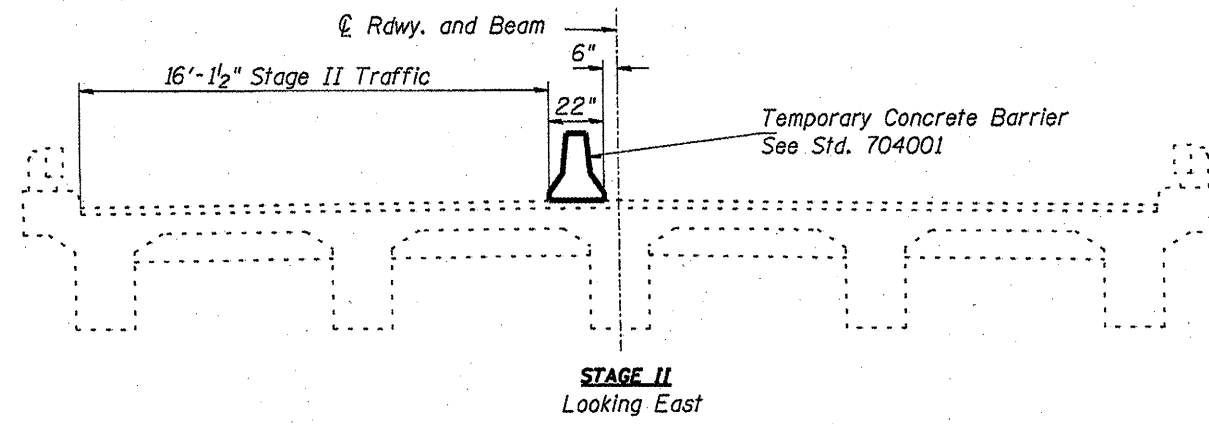
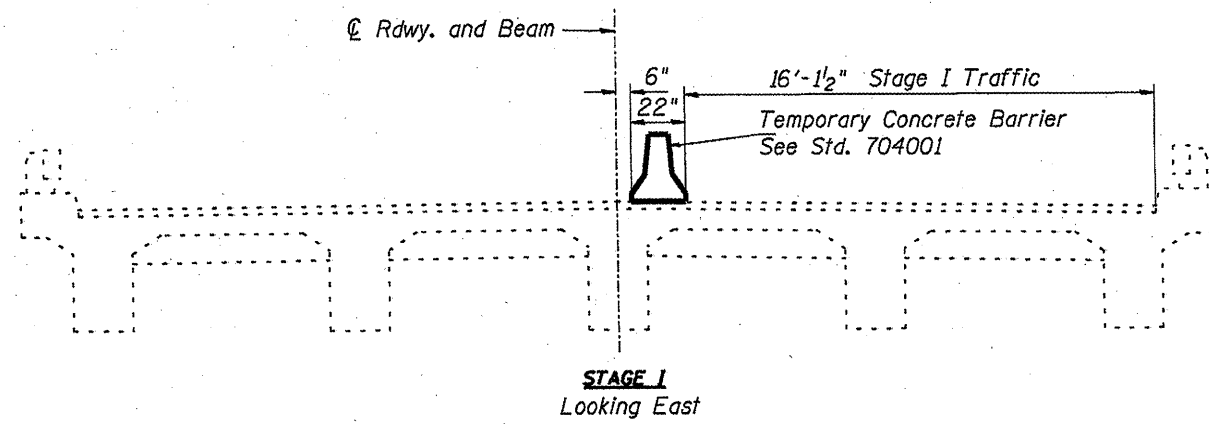
11-1-09

FILE NAME =	USER NAME = gautneyrk	DESIGNED -	REVISED -
ct:\pw\work\PMIDOT\GAUTNEYRK\08174138\7879-sheets.dgn		DRAWN -	REVISED -
PLOT SCALE = 2727.2852' / IN.		CHECKED -	REVISED -
PLOT DATE = 4/14/2010		DATE -	REVISED -

STATE OF ILLINOIS  
DEPARTMENT OF TRANSPORTATION

SCALE: _____	SHEET NO. ____ OF ____ SHEETS	STA. _____ TO STA. _____
--------------	-------------------------------	--------------------------

F.A.P. RTE.	SECTION	COUNTY	TOTAL SHEETS	SHEET NO.
853	D9 CM BRIDGE REPAIR 2010-2	FRANKLIN	15	14
CONTRACT NO. 78179				
[ILLINOIS] FED. AID PROJECT				



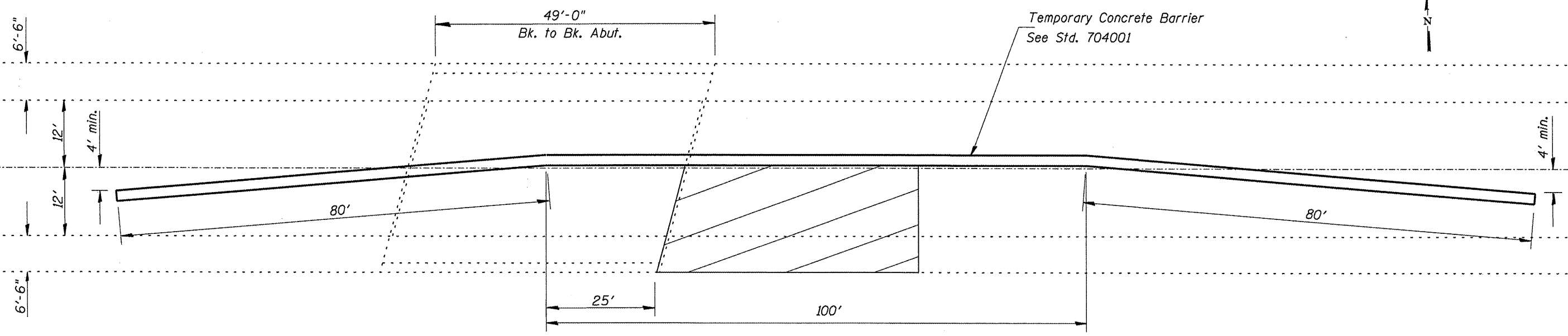
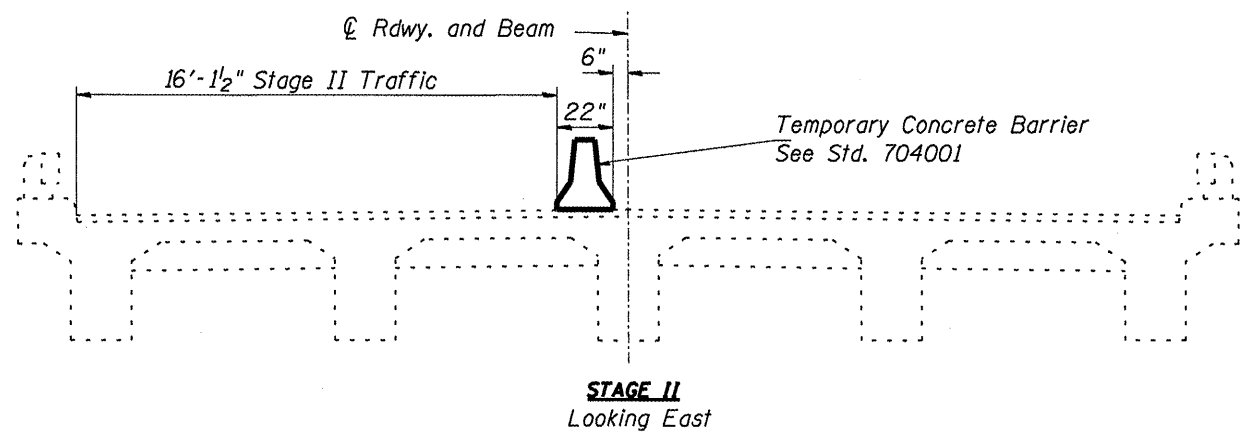
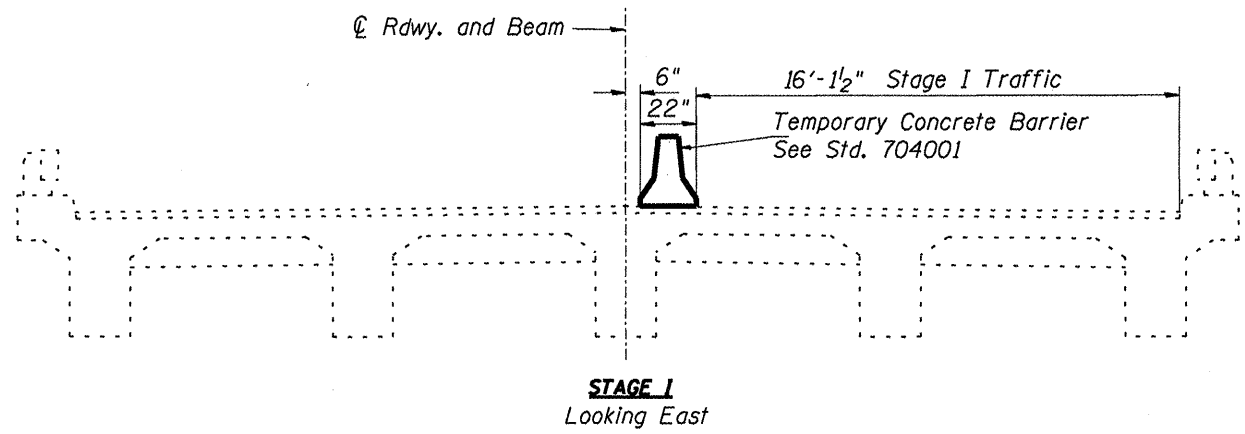
SN. 028-0031  
**TEMPORARY CONCRETE BARRIER**

FILE NAME *	USER NAME = gautneyrk	DESIGNED -	REVISED -
et\pwork\p\WIDOT\GAUTNEYRK\d0174138\7879-sheet.dgn		DRAWN -	REVISED -
	PLOT SCALE = 2727.2852' / 1"	CHECKED -	REVISED -
	PLOT DATE = 4/14/2010	DATE -	REVISED -

**STATE OF ILLINOIS  
 DEPARTMENT OF TRANSPORTATION**

SCALE: _____	SHEET NO. _____ OF _____ SHEETS	STA. _____ TO STA. _____
--------------	---------------------------------	--------------------------

F.A.P. RTE.	SECTION	COUNTY	TOTAL SHEETS	SHEET NO.
853	09 CM BRIDGE REPAIR 2010-2	FRANKLIN	15	15
CONTRACT NO. 78179			ILLINOIS FED. AID PROJECT	



**TEMPORARY CONCRETE BARRIER**

FILE NAME =	USER NAME = gautneyrk	DESIGNED -	REVISED -	<b>STATE OF ILLINOIS DEPARTMENT OF TRANSPORTATION</b>	SCALE: _____ SHEET NO. _____ OF _____ SHEETS STA. _____ TO STA. _____	F.A.P. RTE.	SECTION	COUNTY	TOTAL SHEETS	SHEET NO.	
es:\pwwork\pwwid\GAUTNEYRK\d0174138\78	79-sheets.dgn	DRAWN -	REVISED -			853	D9 CM BRIDGE REPAIR 2010-2	FRANKLIN	16	16	
	PLOT SCALE = 2727.2852' / IN.	CHECKED -	REVISED -			CONTRACT NO. 78179					
	PLOT DATE = 1/25/2010	DATE -	REVISED -			ILLINOIS FED. AID PROJECT					