

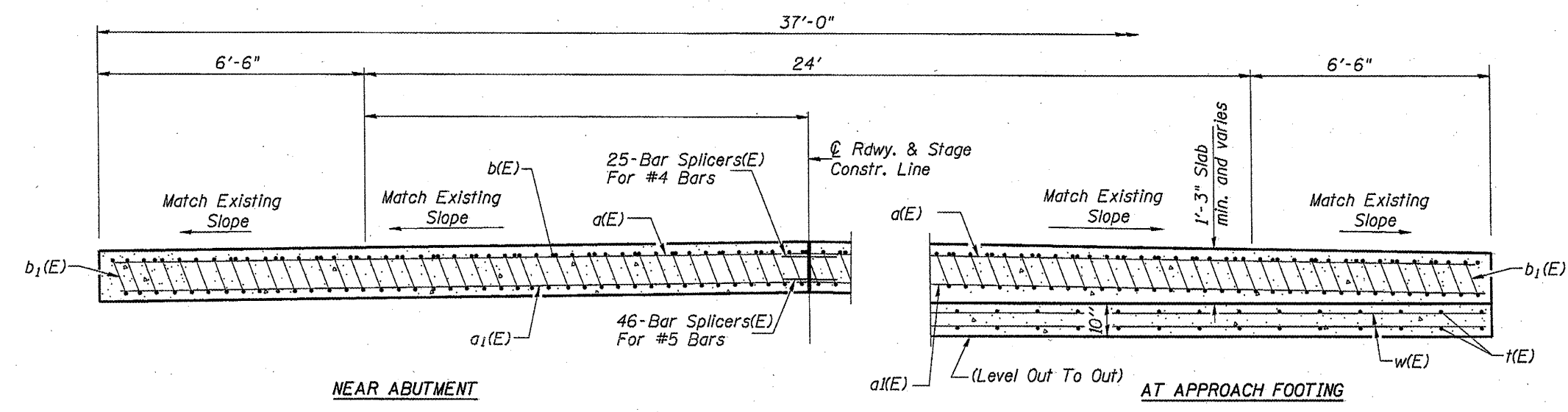
SECTION C-C

* Tilt #9 $b_1(E)$ bars as required to maintain clearance.
 *** Cost of Subbase Granular Material and any required excavation is included with Concrete Superstructure.

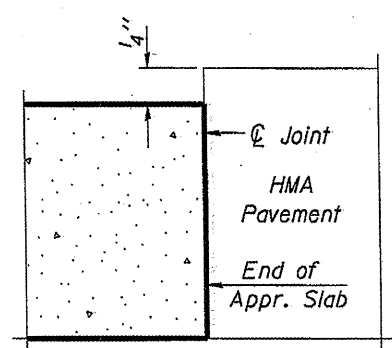
*** 10 mil. Polyethylene Bond Breaker On Steel Trowel Finish

**ONE APPROACH
BILL OF MATERIAL**

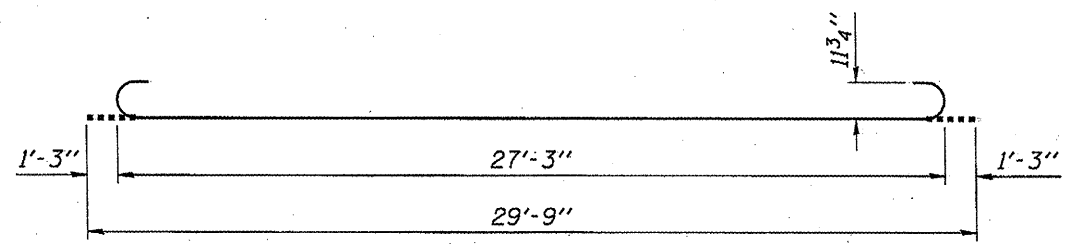
Bar	No.	Size	Length	Shape
a(E)	50	#4	18'-9"	——
a ₁ (E)	92	#5	18'-9"	——
b(E)	28	#4	29'-8"	——
b ₁ (E)	88	#9	29'-9"	——
t(E)	36	#4	36'-9"	——
w(E)	80	#5	18'-9"	——
Concrete Superstructure		Cu. Yd.	54.9	
Concrete Structures		Cu. Yd.	11.8	
Reinforcement Bars, Epoxy Coated		Pound	14330	



SECTION D-D
(See Plan for dimensions not shown)



DETAIL A



BAR $b_1(E)$

Notes:
 Approach slab shall be paid for as Concrete Superstructure.
 Approach footing concrete shall be paid for as Concrete Structures.
 Reinforcement shall be paid for as Reinforcement Bars, Epoxy Coated.
 For v(E) bar details, see sheet 12 of 15.
 The approach footing maximum applied service bearing pressure (Q_{max}) = 2.0 ksf.
 For bar splicer details, see sheet 14 of 15.
 Cost of excavation for approach footing included with Concrete Structures.
 For Porous Granular Embankment (Special) and drainage treatment details, see sheet 13 of 15.

(Sheet 2 of 2)

**BRIDGE APPROACH SLAB DETAILS
EAST APPROACH
STRUCTURE NO. 028-0031**

BA-L 11-1-09