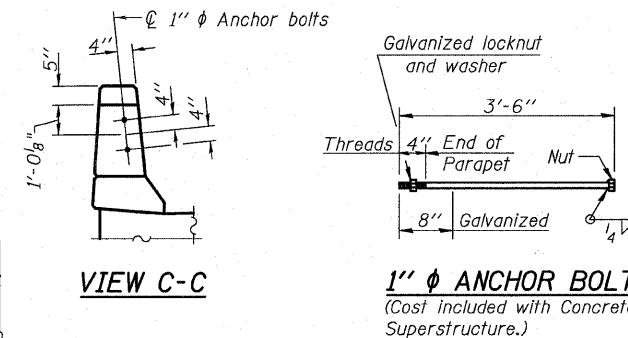
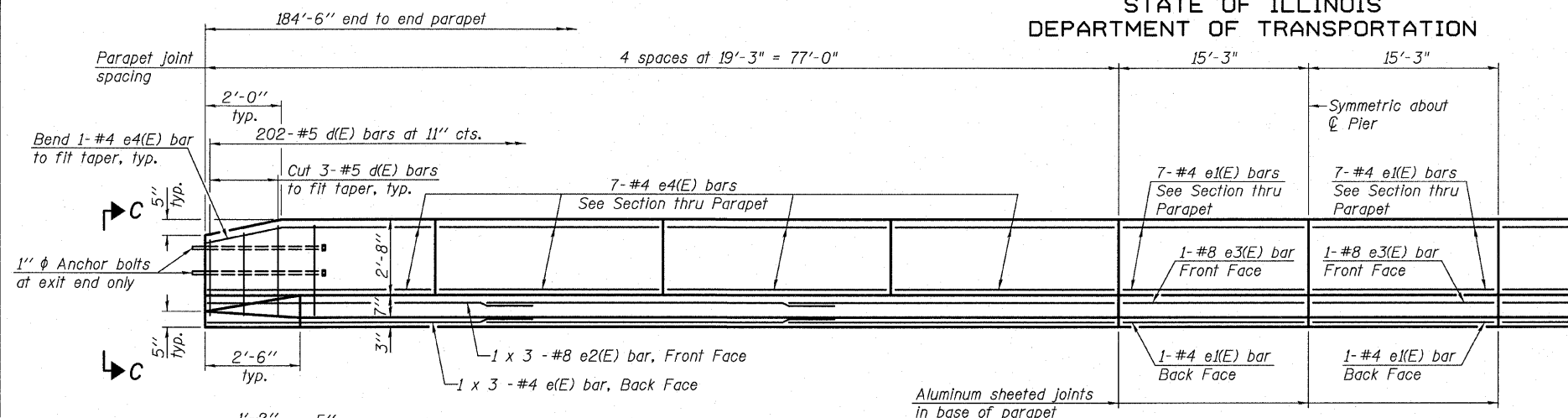


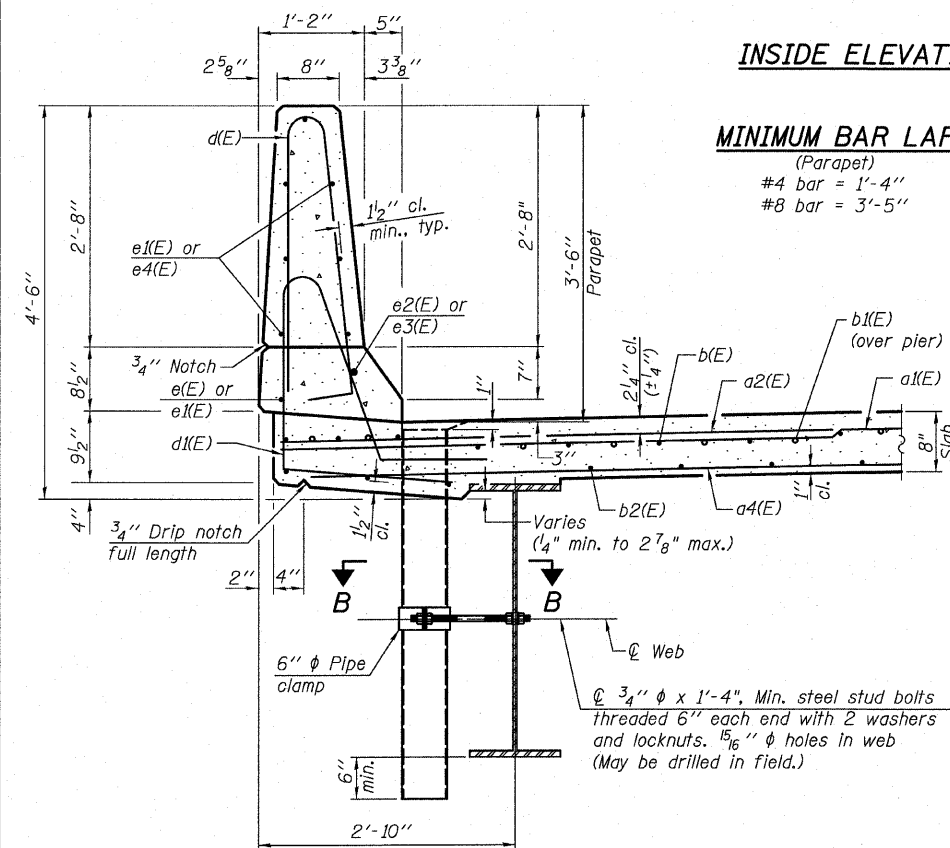
STATE OF ILLINOIS
DEPARTMENT OF TRANSPORTATION



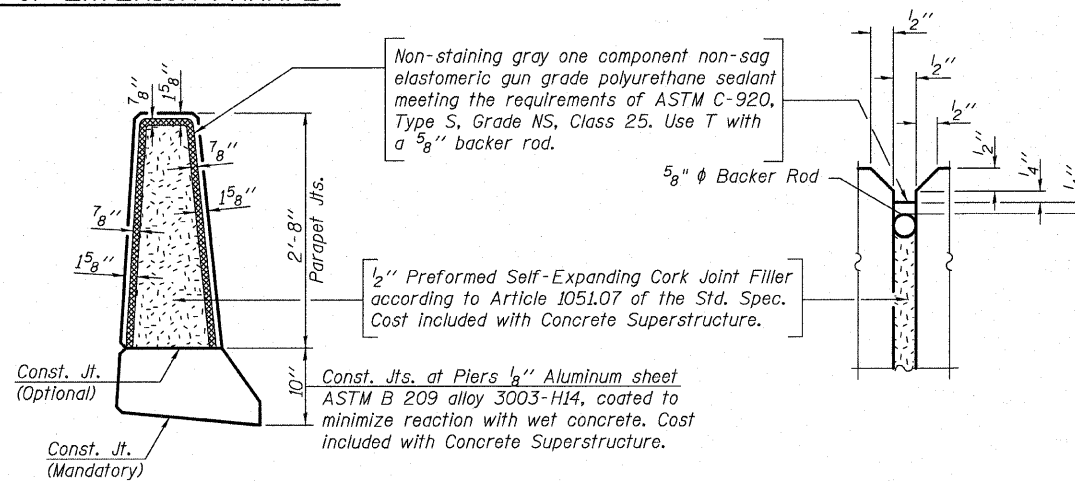
**SUPERSTRUCTURE
BILL OF MATERIAL**
(Both Structures)

Bar	No.	Size	Length	Shape
a1(E)	494	#5	28'-8"	—
a2(E)	494	#5	33'-1"	—
a3(E)	496	#6	6'-0"	—
a4(E)	444	#5	28'-8"	—
a4(E)	444	#5	32'-11"	—
b(E)	924	#5	27'-9"	—
b1(E)	124	#6	46'-0"	—
b2(E)	672	#5	32'-1"	—
b3(E)	124	#6	15'-6"	—
d(E)	808	#5	6'-10"	—
d1(E)	404	#5	7'-6"	—
d2(E)	404	#5	8'-1"	—
e(E)	24	#4	26'-6"	—
e1(E)	64	#4	14'-11"	—
e2(E)	24	#8	27'-10"	—
e3(E)	8	#8	14'-11"	—
e4(E)	224	#4	18'-11"	—
m(E)	8	#6	28'-8"	—
m1(E)	8	#6	32'-4"	—
m2(E)	12	#6	28'-8"	—
m3(E)	12	#6	33'-3"	—
m4(E)	80	#6	8'-3"	—
m5(E)	36	#6	4'-4"	—
m6(E)	4	#6	2'-0"	—
m7(E)	4	#6	2'-2"	—
m8(E)	8	#6	6'-7"	—
s(E)	440	#5	6'-11"	—
s1(E)	224	#4	10'-2"	—
v(E)	248	#5	3'-7"	—
Reinforcement Bars, Epoxy Coated			Pound	152,610
Concrete Superstructure			Cu. Yds.	780.5

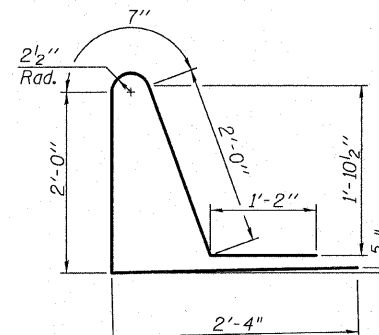
INSIDE ELEVATION OF EXTERIOR PARAPET



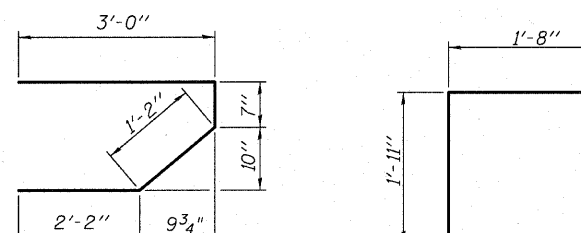
MINIMUM BAR LAP
(Parapet)
#4 bar = 1'-4"
#8 bar = 3'-5"



PARAPET JOINT DETAILS

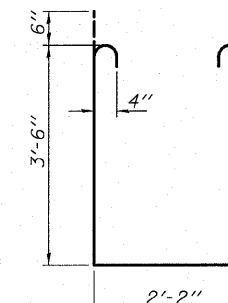


BAR d2(E)

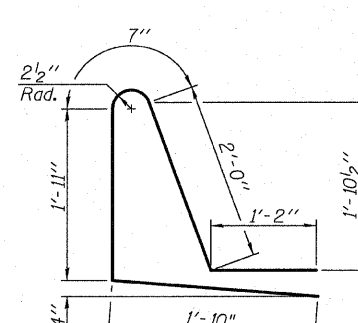


BAR s(E)

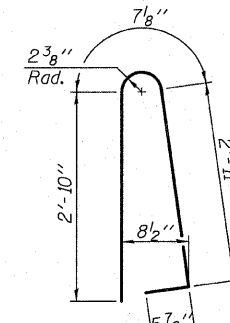
BAR v(E)



BAR s1(E)



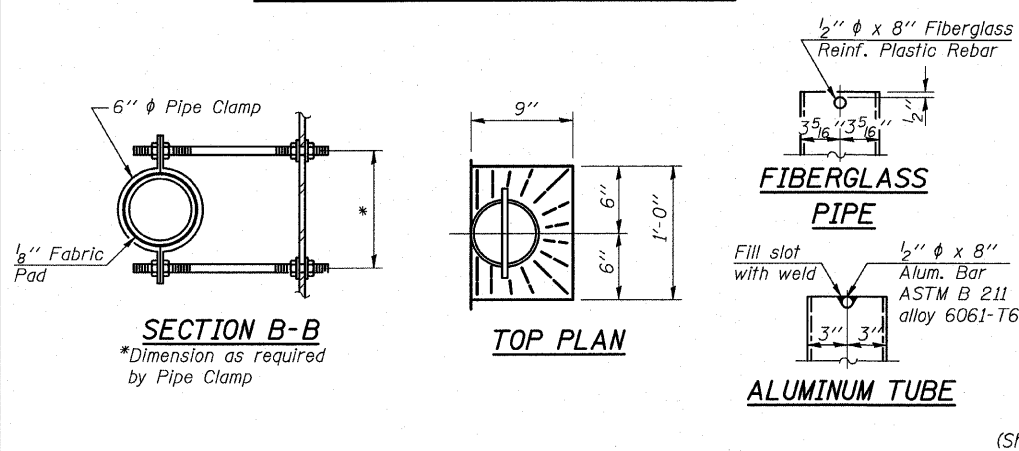
BAR d1(E)



BAR d(E)

- Notes:
- Bars indicated thus 1 x 3-#8 etc. indicates 1 line of bars with 3 lengths per line.
 - Drains shall be located clear of all diaphragms. The exterior surfaces of the floor drains shall be painted with the finish coat as specified in the special provisions for Cleaning and Painting New Metal Structures. The exterior surfaces of the drains shall be cleaned according to Society of Protective Coatings Spec. SSPC-SP1 prior to painting.
 - Fiberglass pipe shall conform to ASTM D 2996, with short-time rupture strength hoop tensile stress of 30,000 p.s.i. minimum.

**SUPERSTRUCTURE DETAILS
STRUCTURE NO. 028-0079 (N.B.)
STRUCTURE NO. 028-0080 (S.B.)**



SECTION B-B
*Dimension as required by Pipe Clamp

TOP PLAN

ALUMINUM TUBE

TOP PLAN
(Showing Aluminum Tube)

SHEET NO. 13	F.A.I. RTE. 57	SECTION (28-5)VB-1	COUNTY FRANKLIN	TOTAL SHEETS 81	SHEET NO. 36
SHEETS 29			CONTRACT NO. 78157		
FED. ROAD DIST. NO. 7 ILLINOIS FED. AID PROJECT					
QATES ASSOCIATES Consulting Engineers			Eastport Business Center 1 100 Lanter Court, Suite 1 Collinsville, Illinois 62234 618-345-2200 Design Firm License No. 184.001115		
DESIGNED JAD			CHECKED MJP		
DRAWN JAD			CHECKED MJP		