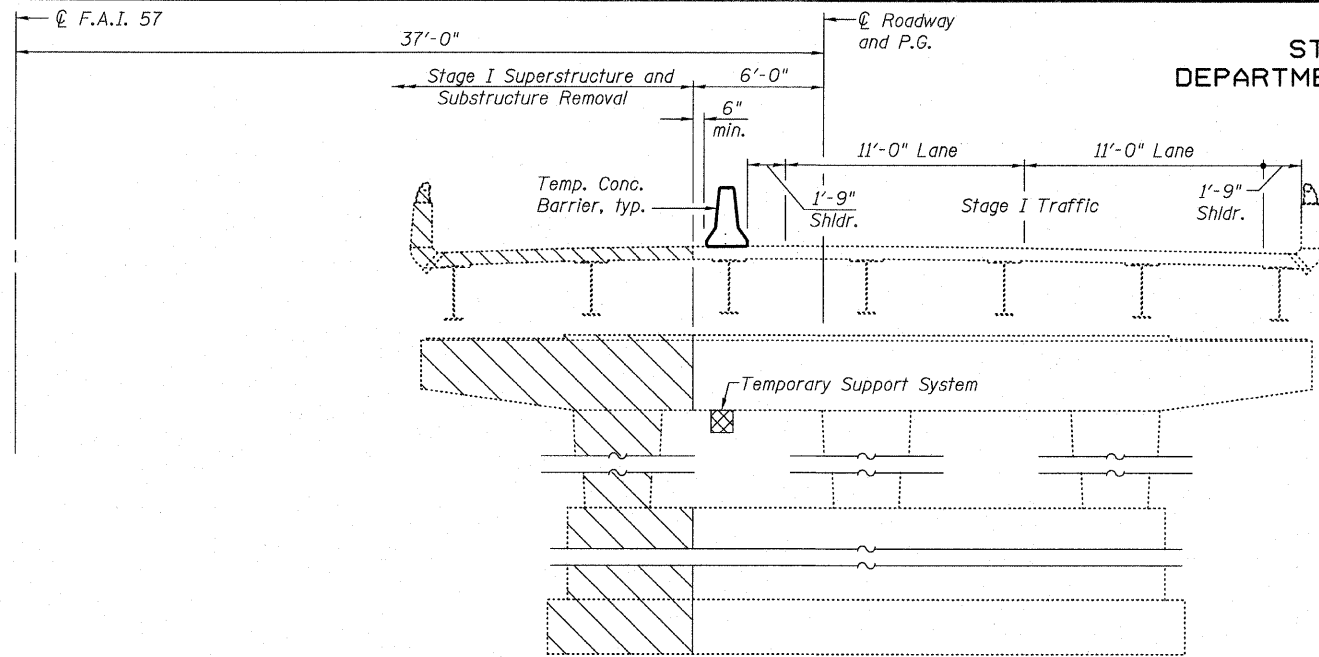
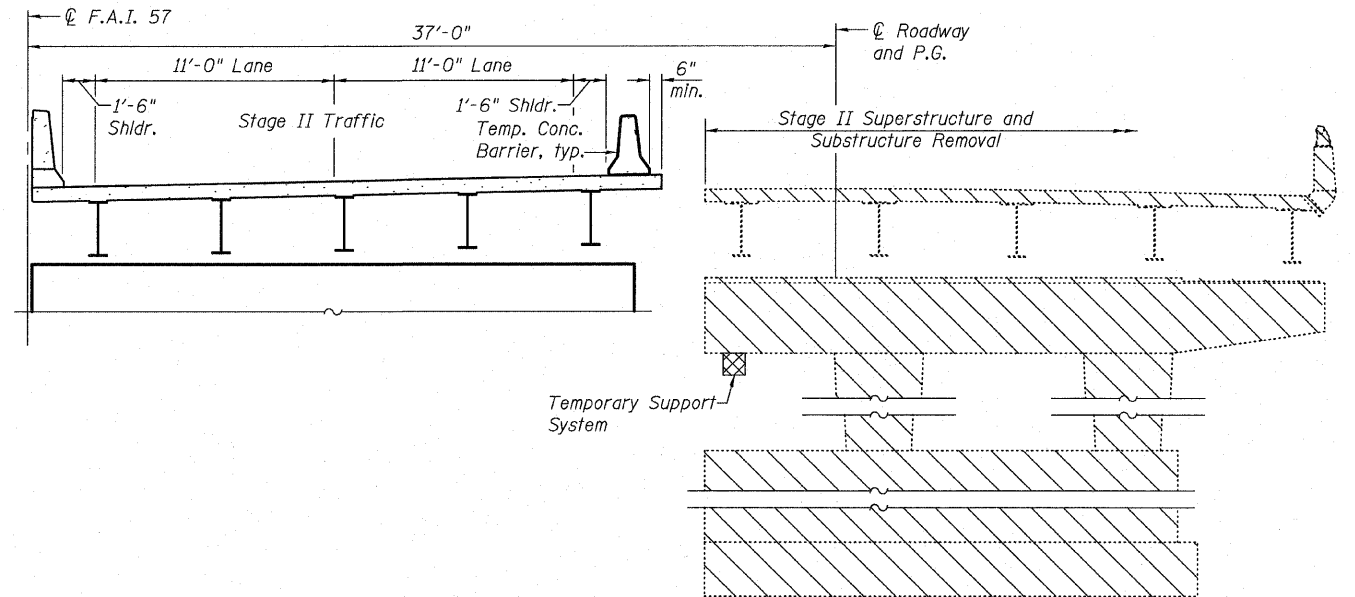


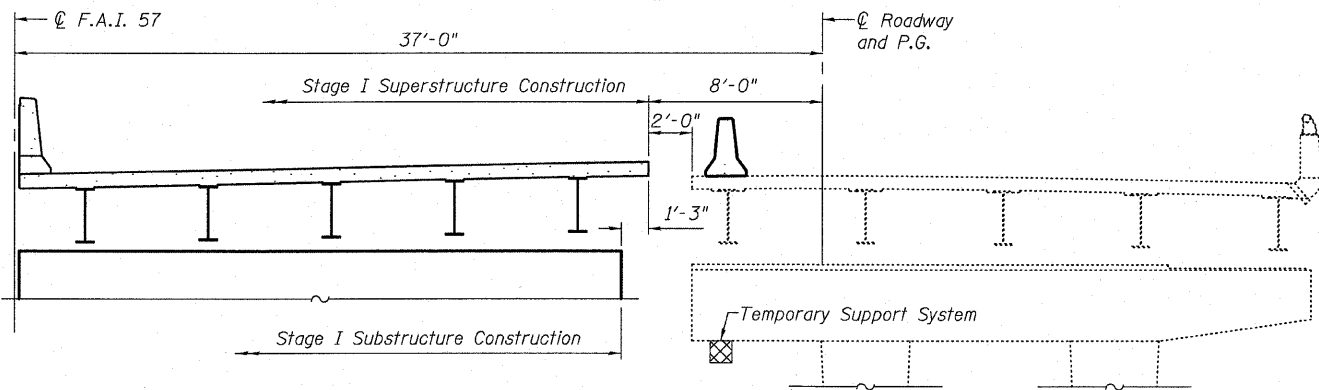
STATE OF ILLINOIS
DEPARTMENT OF TRANSPORTATION



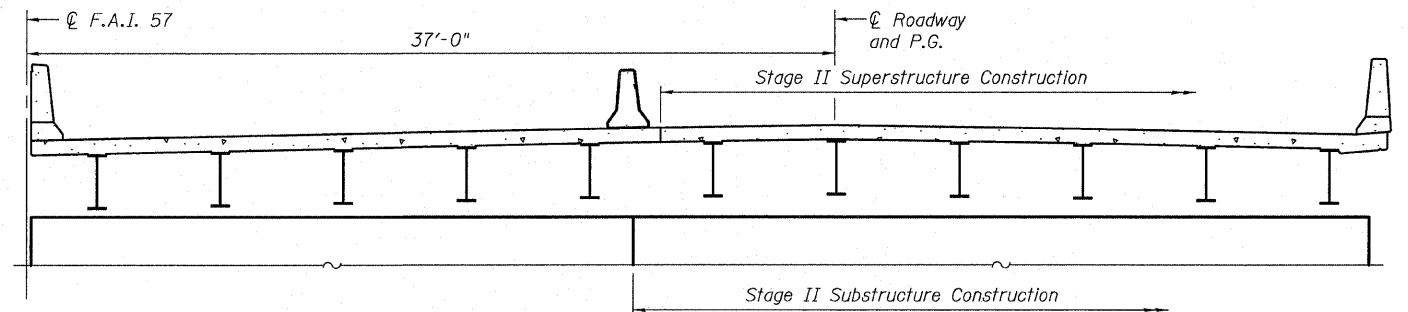
STAGE I REMOVAL ⑦⑩⑫
(Piers shown, abutments similar)



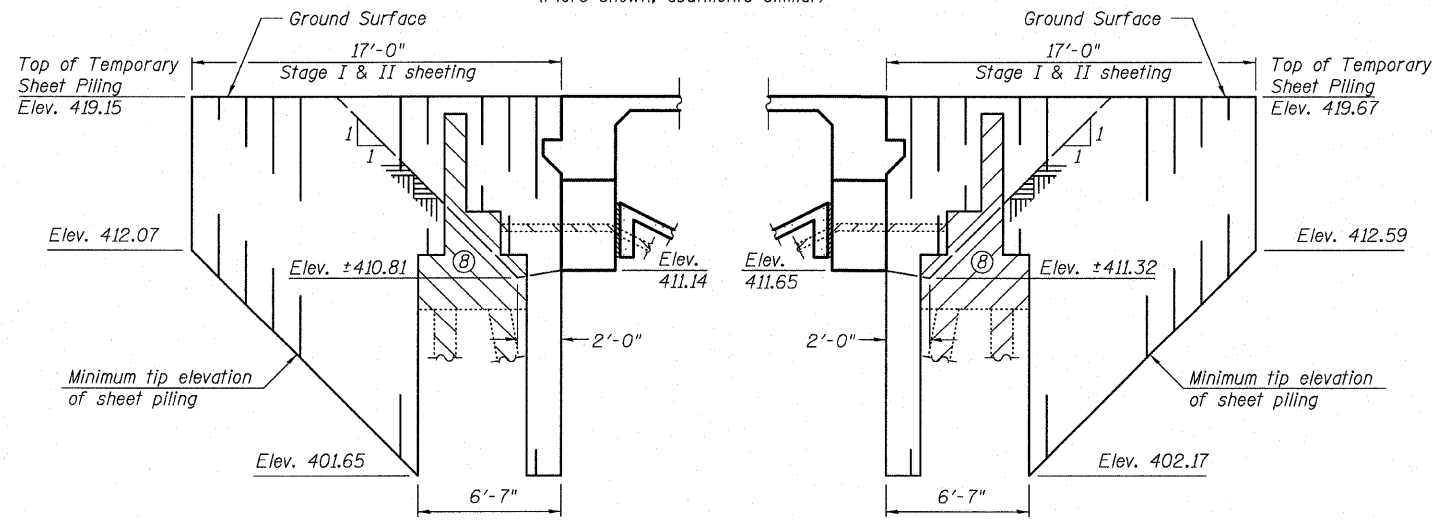
STAGE II REMOVAL ⑦⑩⑫
(Piers shown, abutments similar)



STAGE I CONSTRUCTION
(Piers shown, abutments similar)



STAGE II CONSTRUCTION
(Piers shown, abutments similar)



NORTH ABUTMENT

Minimum Section
Modulus = 10.0 in³/ft

SOUTH ABUTMENT

Minimum Section
Modulus = 10.0 in³/ft

TEMPORARY SHEET PILING DETAIL

(N.B. Structure shown, S.B. Structure similar) ⑤⑥

Notes:

- ① All views show N.B. Structure looking North & S.B. Structure looking South.
- ② See roadway plans for quantity of Temporary Concrete Barrier and related traffic control.
- ③ Existing concrete deck shall be saw cut at stage removal line prior to Stage I removal. Cost included with Removal of Existing Structures.
- ④ For details of Temporary Concrete Barrier, see sheet 4 of 29.
- ⑤ If the Contractor chooses to alter the temporary cantilevered sheet piling design requirements shown on the plans, a design submittal including plan details and calculations will be required for review and acceptance by the Engineer.
- ⑥ The Contractor shall connect the first sheet to the existing abutment wall to ensure stability of sheets driven to the top of the existing footing. This connection shall be reviewed and accepted by the Engineer and included in the cost for Temporary Sheet Piling.
- ⑦ The Contractor shall monitor the existing structure during Stage I Removal and pile driving to assure that no movement or damage is occurring. If movement or damage is observed, the Contractor shall immediately stop work and notify the Engineer. Cost included in Removal of Existing Structures.
- ⑧ Existing Abutments to be removed to limits of Porous Granular Embankment Special, minimum. Cost included in Removal of Existing Structures.
- ⑨ Hatched areas indicated limits of Removal of Existing Structures.
- ⑩ Existing slope wall to be completely removed. Cost included in Removal of Existing Structures.

- ⑪ Partial removal of pier 2 shown in all sections above. A Temporary support system will be required to support existing pier 2 during Stage I Construction and must be in place before pier is saw cut. Prior to Stage I removal, piers and abutments shall be saw cut full depth at substructure stage removal line. See Special Provisions.
- ⑫ Existing piers 1 & 3 to be removed during Stage II Removal only. Existing pier 2 shall be removed to bottom of footing. Piers 1 & 3 shall be removed as required in Section 501 of the Standard Specifications.

STAGE CONSTRUCTION DETAILS
STRUCTURE NO. 028-0079 (N.B.)
STRUCTURE NO. 028-0080 (S.B.)

| | | | | | |
|--|-------------|------------|------------------------------|--------------|-----------|
| SHEET NO. 3 | F.A.I. RTE. | SECTION | COUNTY | TOTAL SHEETS | SHEET NO. |
| | 57 | (28-5)VB-1 | FRANKLIN | 81 | 26 |
| SHEETS 29 | | | CONTRACT NO. 78157 | | |
| FED. ROAD DIST. NO. 7 ILLINOIS FED. AID PROJECT | | | | | |
| <p>QATES ASSOCIATES Consulting Engineers</p> | | | Eastport Business Center 1 | | |
| | | | 100 Lanter Court, Suite 1 | | |
| | | | Collinsville, Illinois 62234 | | |
| | | | 618-345-2200 | | |
| Design Firm License No. 184.001115 | | | DESIGNED JAD | | |
| | | | CHECKED MJP | | |
| | | | DRAWN JAD | | |
| | | | CHECKED MJP | | |