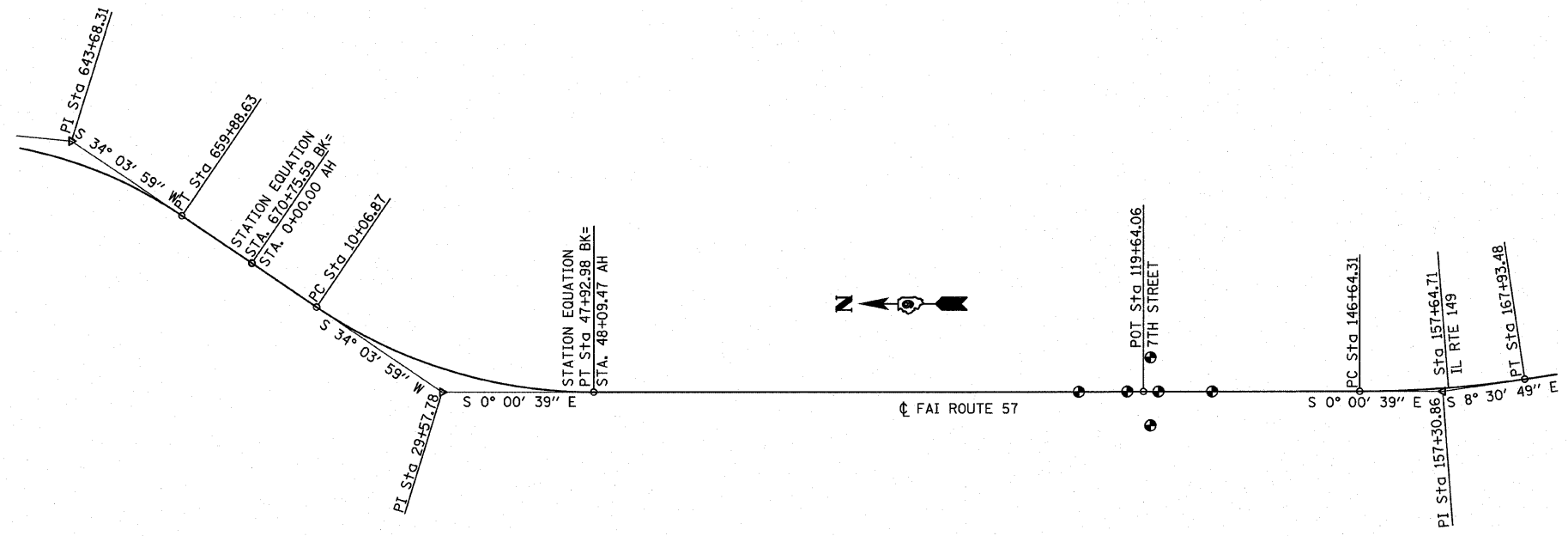


PROP. CURVE 103  
 PI STA. = 157+30.86  
 $\Delta = 8^\circ 30' 10''$  (LT)  
 $D = 0^\circ 23' 58''$   
 $R = 14,347.45'$   
 $T = 1,066.54'$   
 $L = 2,129.17'$   
 $E = 39.59'$   
 P.C. STA. = 146+64.31  
 P.T. STA. = 167+93.48

PROP. CURVE 104  
 PI STA. = 29+57.78  
 $\Delta = 34^\circ 04' 38''$  (LT)  
 $D = 0^\circ 54' 00''$   
 $R = 6,365.79'$   
 $T = 1,950.91'$   
 $L = 3,786.11'$   
 $E = 292.24'$   
 P.C. STA. = 10+06.87  
 P.T. STA. = 47+92.98

PROP. CURVE 105  
 PI STA. = 643+68.31  
 $\Delta = 33^\circ 22' 20''$  (RT)  
 $D = 0^\circ 59' 59''$   
 $R = 5,731.47'$   
 $T = 1,718.01'$   
 $L = 3,338.33'$   
 $E = 251.95'$   
 P.C. STA. = 626+50.30  
 P.T. STA. = 659+88.63



GROUND COORDINATES

DESCRIPTION	POINT NO.	NORTHING	EASTING
FAI ROUTE 57			
PI STA. 643+68.31	PI 105	466,525.4280	810,559.4330
PT STA. 659+88.63	PT 105	465,102.2436	809,597.0859
STATION EQUATION			
STA. 670+75.59 BK=		464,201.8166	808,988.2236
STA. 0+00.00			
PC STA. 10+06.87	PC 104	463,367.7328	808,424.2222
PI STA. 29+57.78	PI 104	461,751.6214	807,331.4193
STATION EQUATION			
PT STA. 47+92.98 BK=	PT 104	459,800.7155	807,331.7896
STA. 48+09.47 AH			
POT STA. 119+64.06	11964	452,646.1256	807333.1475
PC STA. 146+64.31	PC 103	449,945.8721	807,333.6600
PI STA. 157+30.86	PI 103	448,879.3291	807,333.8624

PERMANENT SURVEY MARKERS

DESCRIPTION	OFFSET	NORTHING	EASTING	ELEV.
FAI ROUTE 57				
P. O. T. 104+00.00	¢	454,210.1923	807,332.8436	393.55
P. O. T. 118+00.00	¢	452,810.1802	807,333.1153	416.91
P. O. T. 121+50.00	¢	452,460.1869	807,333.1767	418.04
P. O. T. 134+00.00	¢	451,210.1874	807,333.4238	404.88
STA. 119+85.00	150' LT	452,625.2144	807,483.1453	394.78
STA. 119+85.00	150' RT	452,625.1575	807,183.1495	393.46

FILE NAME =	USER NAME = moisiegroser	DESIGNED -	REVISED -	<b>STATE OF ILLINOIS DEPARTMENT OF TRANSPORTATION</b>	<b>ALIGNMENT AND TIES I-57 OVER 7TH ST / C&amp;E RAILROAD</b>	F.A.I. RTE.	SECTION	COUNTY	TOTAL SHEETS	SHEET NO.
H:\P\25866p2\Technical_Production\Civil\Microstation\Sec285VB\al1&ttes285vb.dgn	DRAWN -	REVISED -	57			(28-5)VB-1	FRANKLIN	81	12	
PLOT SCALE = 50.0000' / IN.	CHECKED -	REVISED -	CONTRACT NO. 78157							
PLOT DATE = 3/15/2010	DATE -	REVISED -	SCALE:			SHEET NO. 1 OF 1 SHEETS	STA. TO STA.	FED. ROAD DIST. NO.	ILLINOIS FED. AID PROJECT	