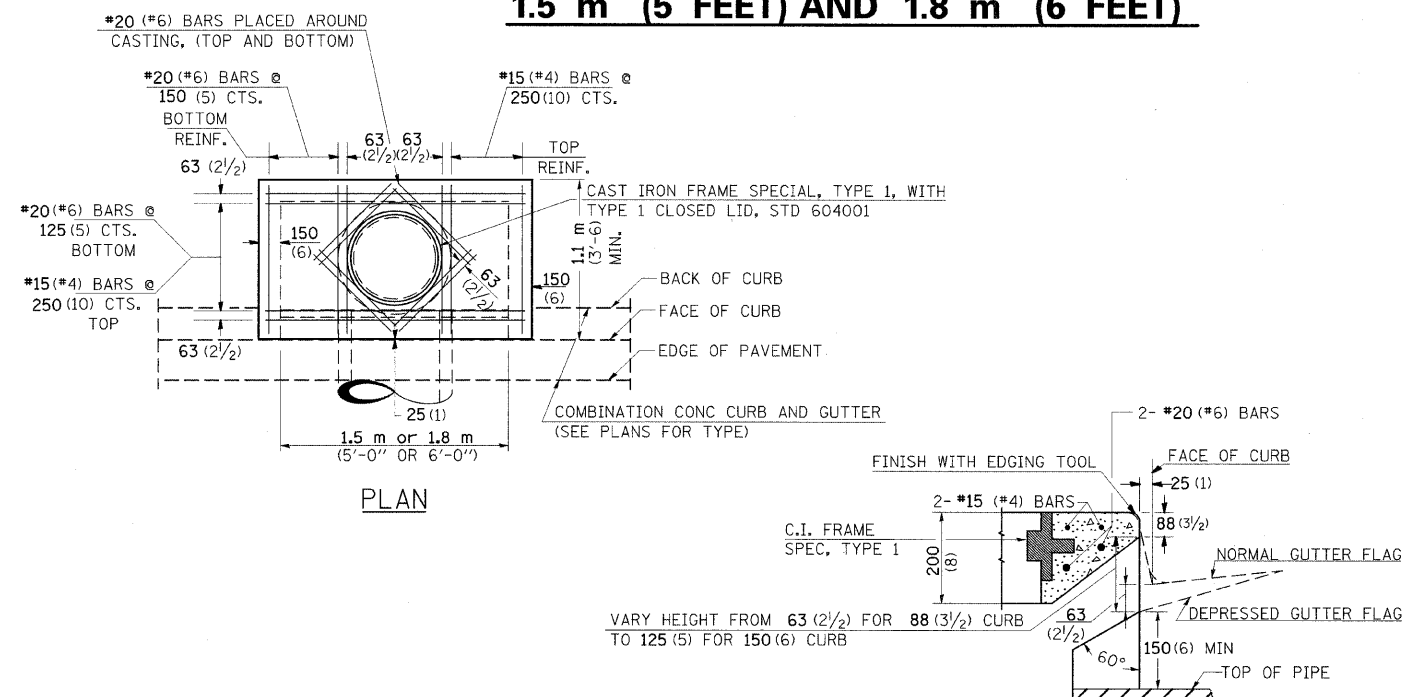
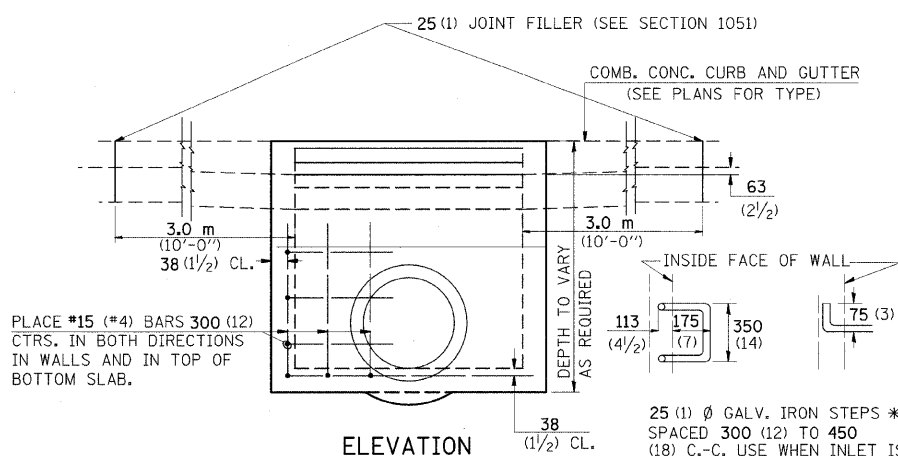


| F.A.P. RTE.         | SECTION         | COUNTY                    | TOTAL SHEETS | SHEET NO. |
|---------------------|-----------------|---------------------------|--------------|-----------|
| 312                 | 101-2(RS-1,N-1) | ALEXANDER                 | 189          | 92        |
| STA.                |                 | TO STA.                   |              |           |
| FED. ROAD DIST. NO. |                 | ILLINOIS FED. AID PROJECT |              |           |

### DETAILS OF INLET SPECIAL, TYPE 3, 1.5 m (5 FEET) AND 1.8 m (6 FEET)



SECTION AT WEIR



ELEVATION

TABLE OF DIMENSIONS

| DESIGN | PIPE * DIA.         | D              |
|--------|---------------------|----------------|
| A      | 450 (18) & LESS     | 750 (2'-6")    |
| B      | 525 (21) & 600 (24) | 900 (3'-0")    |
| C      | 675 (27) & 750 (30) | 1.07 m (3'-7") |
| D      | 825 (33) & 900 (36) | 1.25 m (4'-2") |
| E      | 1.05 m (42)         | 1.43 m (4'-9") |
| F      | 1.2 m (48)          | 1.5 m (5'-0")  |
| G      | 1.35 m (54)         | 1.83 m (6'-1") |

\* WHEN PIPE ENTERS FROM SIDE WALL OTHERWISE D= 750 (30) MINIMUM

**NOTES:**

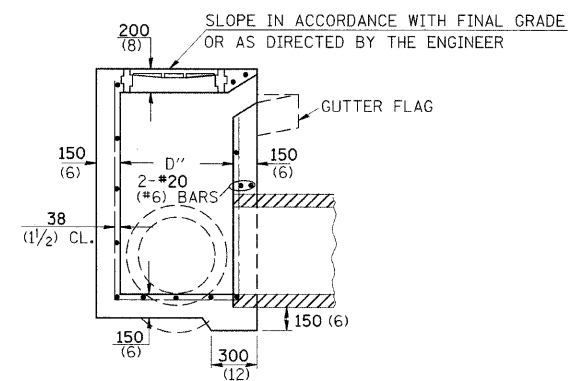
PROVIDE 1/2" CLEARANCE TYP. ALL REINFORCEMENT UNLESS OTHERWISE SPECIFIED.

CLASS SI CONCRETE SHALL BE USED THROUGHOUT. SET FACE OF INLET 25 (1) BEHIND FACE OF CURB. DEPRESS GUTTER FLOWLINE AT INLET 63 (2 1/2) BELOW NORMAL GUTTER FLOWLINE. CONSTRUCT TRANSITION IN FLOWLINE IN 3.0 m (10 FEET) EACH SIDE OF INLET. PIPES TO BE CONNECTED TO INLET AS SHOWN ON STORM SEWER LAYOUT.

INLETS WILL BE PAID FOR AT THE CONTRACT UNIT PRICE EACH FOR INLET, SPECIAL, TYPE 3, 1.5 m (5 FEET) OR INLET, SPECIAL, TYPE 3, 1.8 m (6 FEET) WHICH PRICE SHALL INCLUDE THE CAST IRON FRAME, SPECIAL, TYPE 1 WITH TYPE 1 CLOSED LID, THE REINFORCEMENT BARS, METAL STEPS AND JOINT FILLER.

\*\*THE GALVONIZED IRON STEPS AS DETAILED HEREON ARE TYPICAL. STEPS OF OTHER DESIGN AND MATERIAL THAT WILL CONFORM TO THE MINIMUM REQUIREMENTS OF THE STEPS SHOWN. MAY BE USED WHEN APPROVED BY THE ENGINEER.

IF THE INLET IS NOT CAST IN PLACE THEN THE INLET SHALL BE PRODUCED ACCORDING TO THE DEPARTMENT'S CURRENT POLICY MEMORANDUM, "QUALITY CONTROL/QUALITY ASSURANCE PROGRAM FOR PRECAST CONCRETE PRODUCTS".



SECTION

**NOTE TO DESIGNER:**

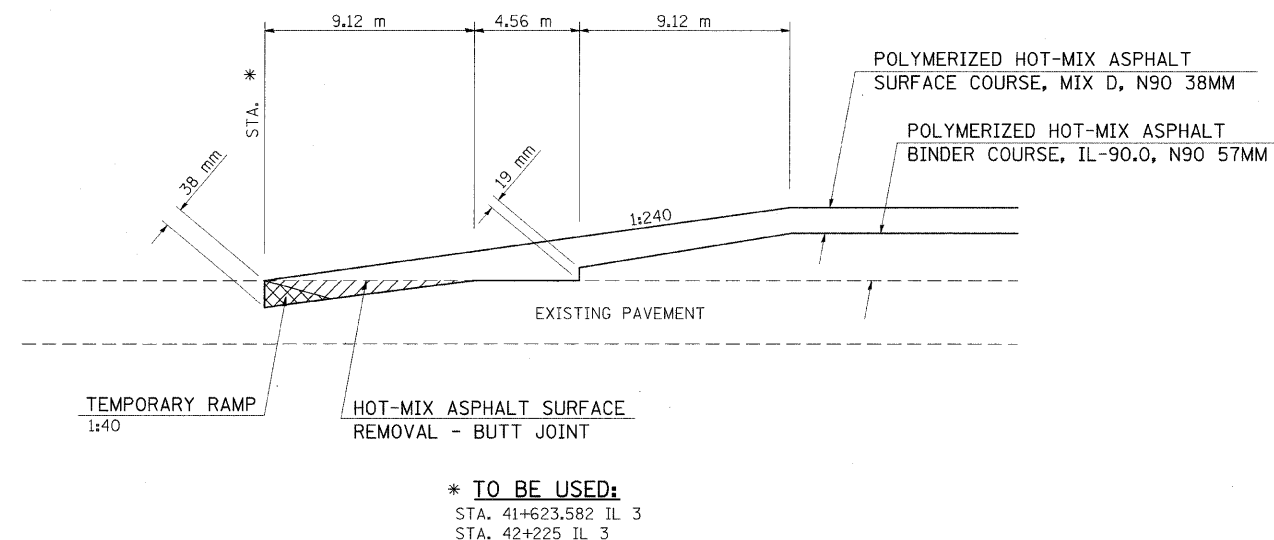
WHEN USING THIS STANDARD THE DESIGNER SHOULD ALSO CHECK BDE SPECIAL PROVISION 419 "PRECAST CONCRETE PRODUCTS".

ALL DIMENSIONS ARE IN MILLIMETERS (INCHES) UNLESS OTHERWISE NOTED.

STD. 9-1

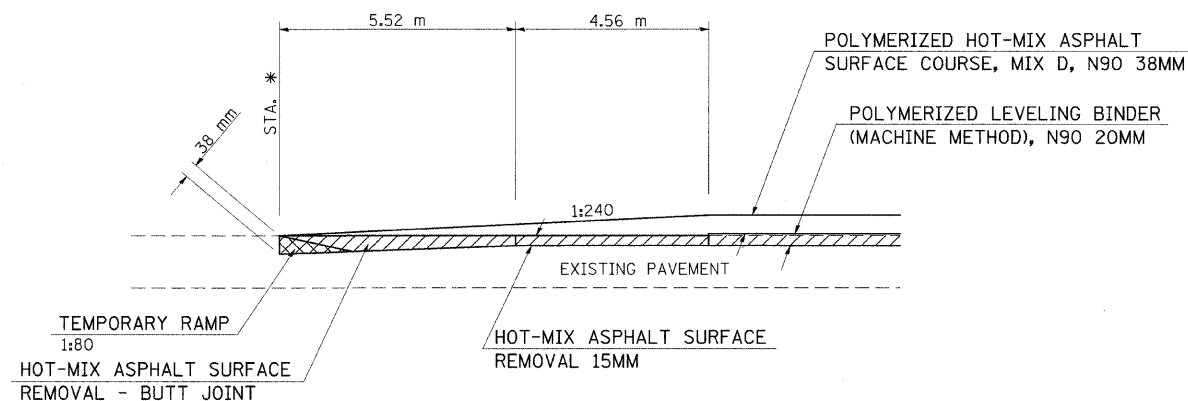
| REVISIONS | DATE    |
|-----------|---------|
| REDRAWN   | 2-15-88 |
| REVISED   | 6-15-94 |
| REVISED   | 1-19-99 |
| REVISED   | 5-6-04  |

### BUTT JOINT



\* TO BE USED:  
STA. 41+623.582 IL 3  
STA. 42+225 IL 3

### BUTT JOINT



\* TO BE USED:  
STA. 12+539.4 IL 146

| REVISIONS |      |
|-----------|------|
| NAME      | DATE |
|           |      |
|           |      |
|           |      |
|           |      |
|           |      |
|           |      |
|           |      |
|           |      |
|           |      |

ILLINOIS DEPARTMENT OF TRANSPORTATION

**DETAILS:**  
INLET SPECIAL, TYPE 3, 1.5 m(5') AND 1.8 m(6');  
BUTT JOINTS

SCALE: VERT. NONE  
HORIZ. DATE

DRAWN BY CNH  
CHECKED BY

PLOT DATE = 9/14/2009  
FILE NAME = c:\pwork\11001\K101\K101.dwg  
PLOT SCALE = 1/8"=1'-0"  
USER NAME = krenz.jp