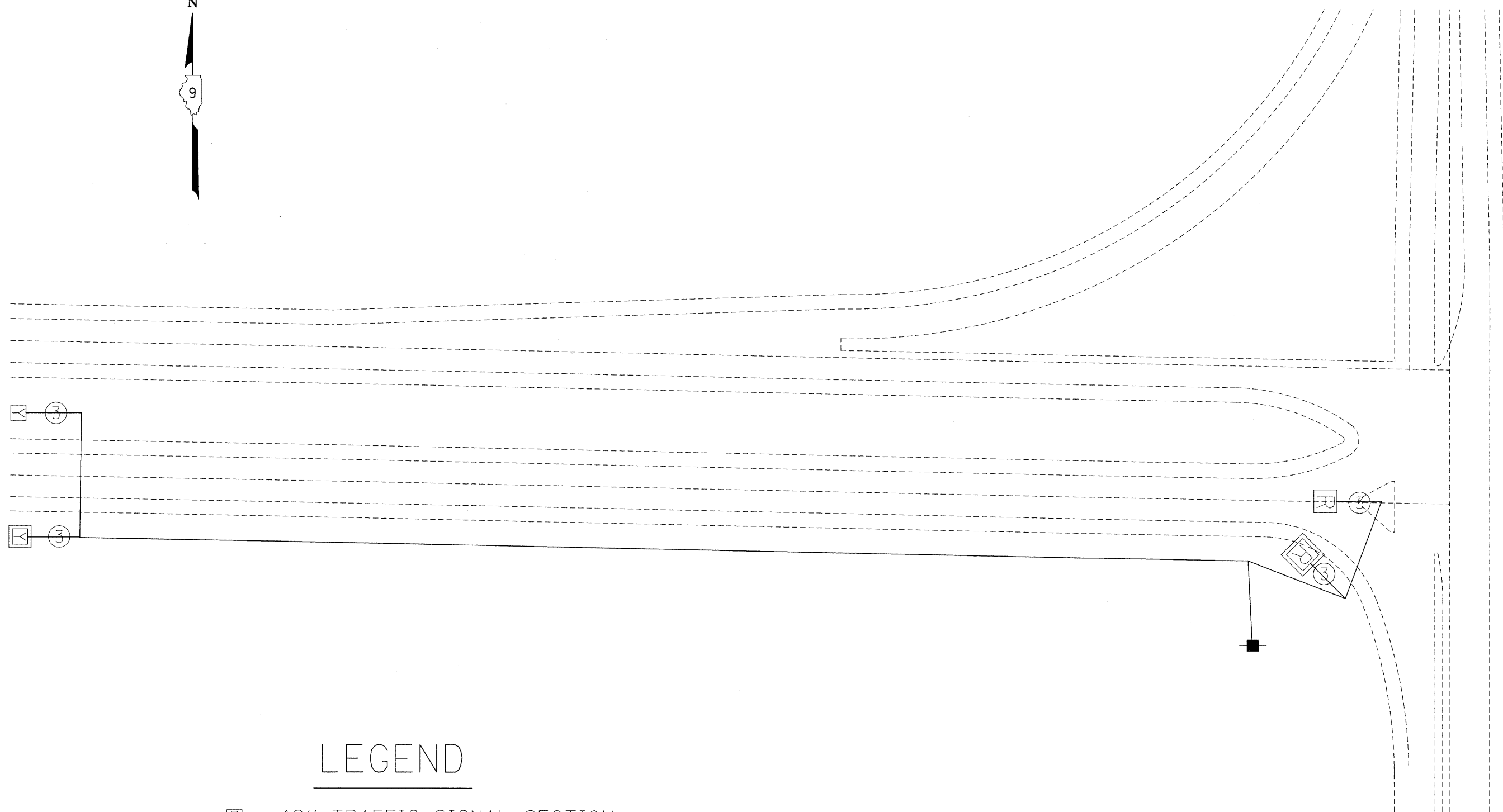


F.A.P. RTE.	SECTION	COUNTY	TOTAL SHEETS	SHEET NO.
312	101-2(RS-1,N-1)	ALEXANDER	189	84
STA.		TO STA.		
FED. ROAD DIST. NO.		ILLINOIS	FED. AID PROJECT	



LEGEND

- R 12" TRAFFIC SIGNAL SECTION
- R 12" TRAFFIC SIGNAL SECTION (SPECIAL)
- ELECTRICAL SERVICE
- 3 NUMBER IN CIRCLE INDICATES NUMBER OF CONDUCTORS IN THAT CABLE

NOTES:

1. ALL SIGNAL LENSES SHALL BE 12 INCHES.
2. ALL CABLES SHALL BE A.W.G. #14 UNLESS OTHERWISE NOTED

REVISIONS	
NAME	DATE

ILLINOIS DEPARTMENT OF TRANSPORTATION

FLASHING BEACONS WIRING DIAGRAM

DATE _____ DRAWN BY JCK
CHECKED BY _____