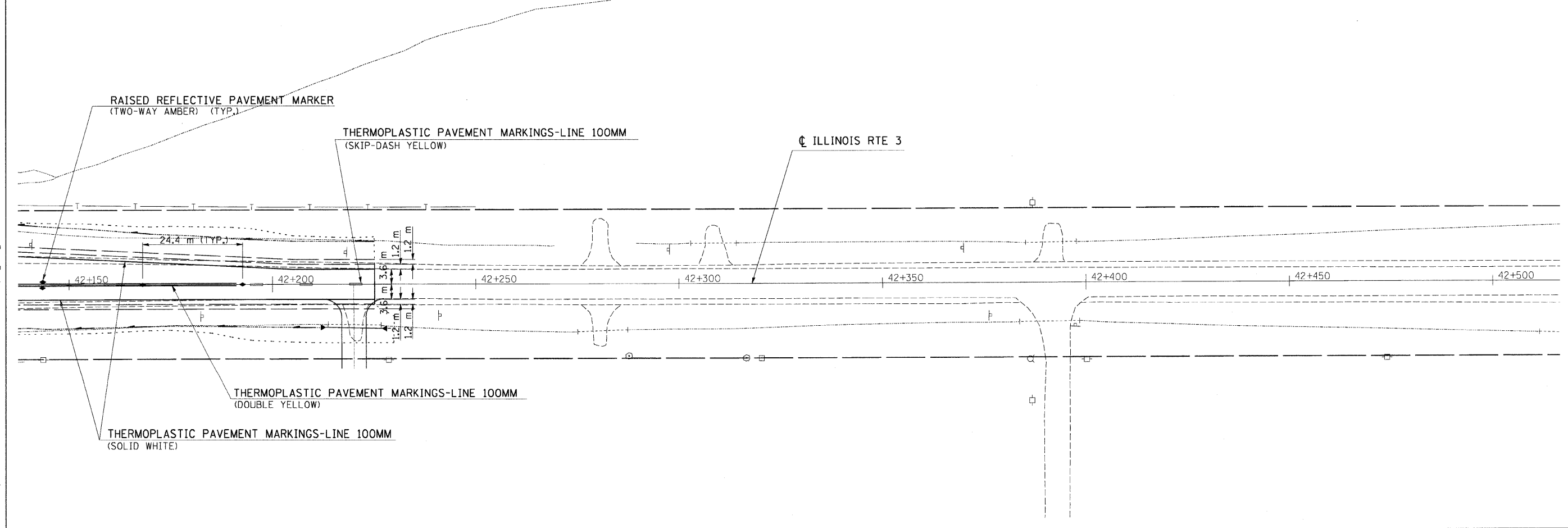
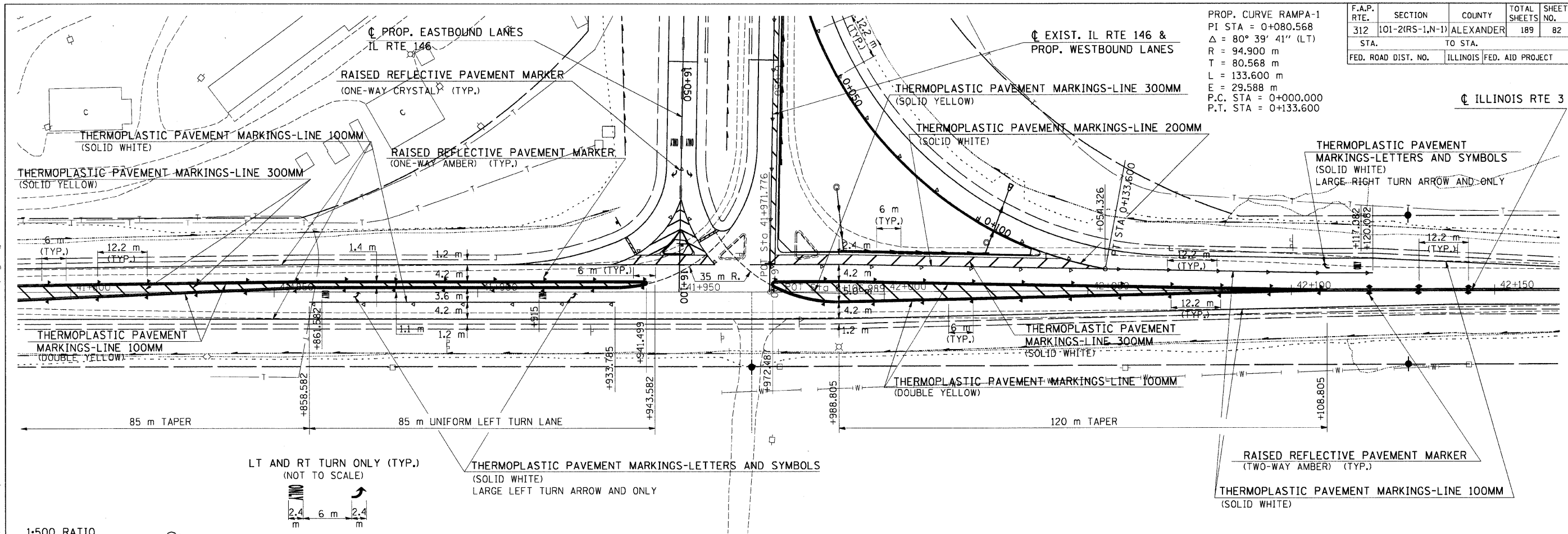


F.A.P. RTE.	SECTION	COUNTY	TOTAL SHEETS	SHEET NO.
312	101-2(RS-1,N-1)	ALEXANDER	189	82
STA.		TO STA.		
FED. ROAD DIST. NO.		ILLINOIS	FED. AID PROJECT	

PROP. CURVE RAMP-1
 PI STA = 0+080.568
 $\Delta = 80^\circ 39' 41''$ (LT)
 R = 94.900 m
 T = 80.568 m
 L = 133.600 m
 E = 29.588 m
 P.C. STA = 0+000.000
 P.T. STA = 0+133.600



Monday September 14, 2009 @ 10:31:52 AM
 c:\pwworkspace\pwworkspace\Kranz\JC\m2599900.dgn
 PAV13.dwg
 PAV14.dwg
 Monday September 14, 2009 @ 10:31:52 AM
 c:\pwworkspace\pwworkspace\Kranz\JC\m2599900.dgn
 PAV13.dwg
 PAV14.dwg