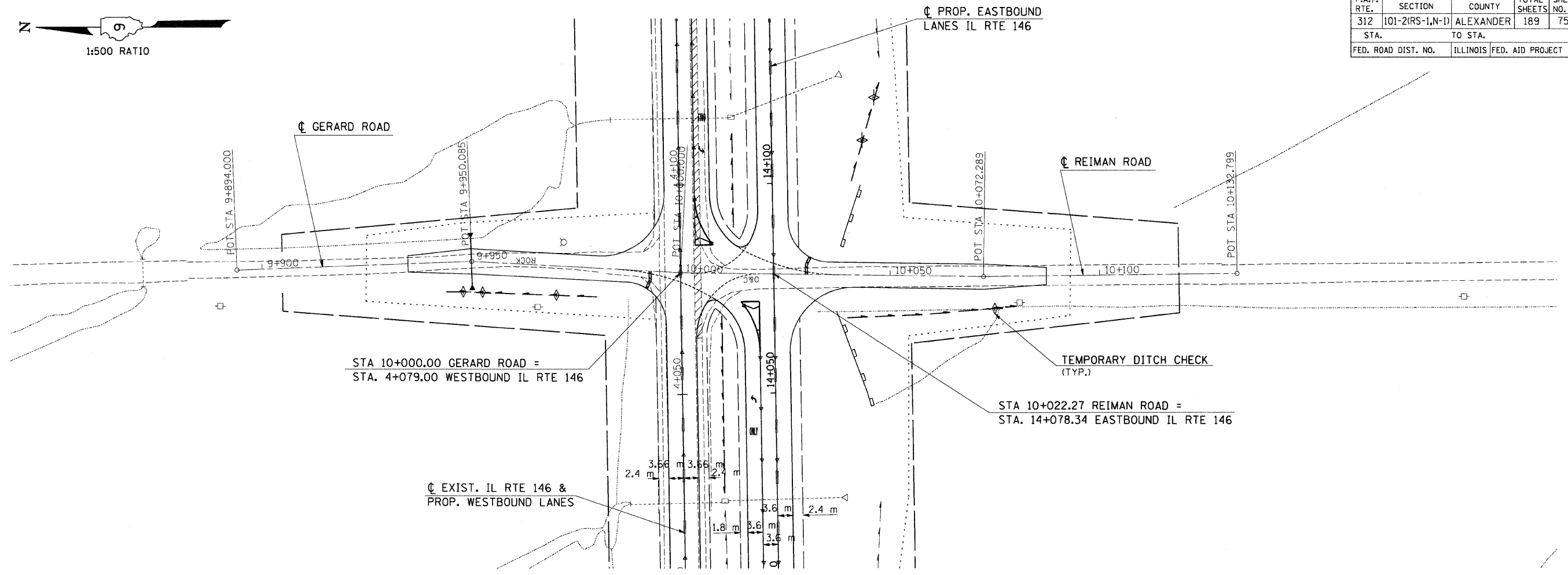


F.A.P. RTE.	SECTION	COUNTY	TOTAL SHEETS	SHEET NO.
312	101-2(RS-1,N-1)	ALEXANDER	189	75
STA.		TO STA.		
FED. ROAD DIST. NO.		ILLINOIS	FED. AID PROJECT	

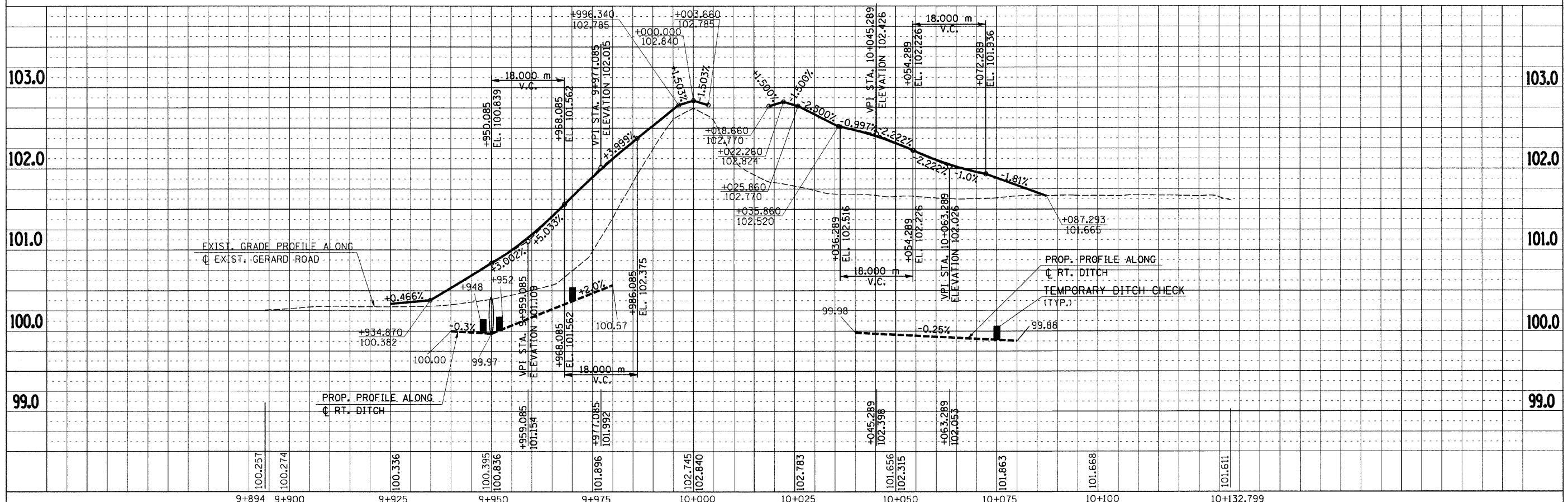


BY	DATE



STA 10+000.00 GERARD ROAD =
STA. 4+079.00 WESTBOUND IL RTE 146

STA 10+022.27 REIMAN ROAD =
STA. 14+078.34 EASTBOUND IL RTE 146



TEMPORARY EROSION CONTROL GERARD ROAD - STA 9+894 TO STA 10+132.799

Tuesday September 15, 2009 @ 8:32:22 AM
 c:\pwworking\pwworking\KRRANZJC\ms43640\m2599pl.dgn LV:2-23:25-63