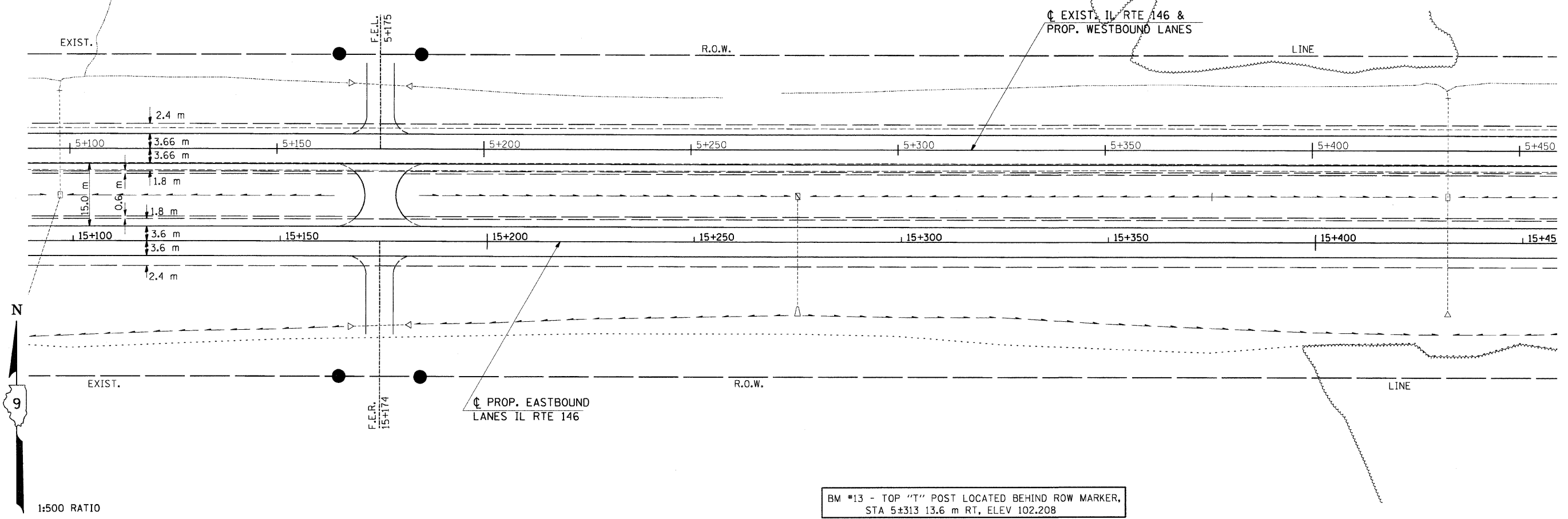


F.A.P. RTE.	SECTION	COUNTY	TOTAL SHEETS	SHEET NO.
312	101-2(RS-1,N-1)	ALEXANDER	189	69
STA.		TO STA.		
FED. ROAD DIST. NO.		ILLINOIS FED. AID PROJECT		

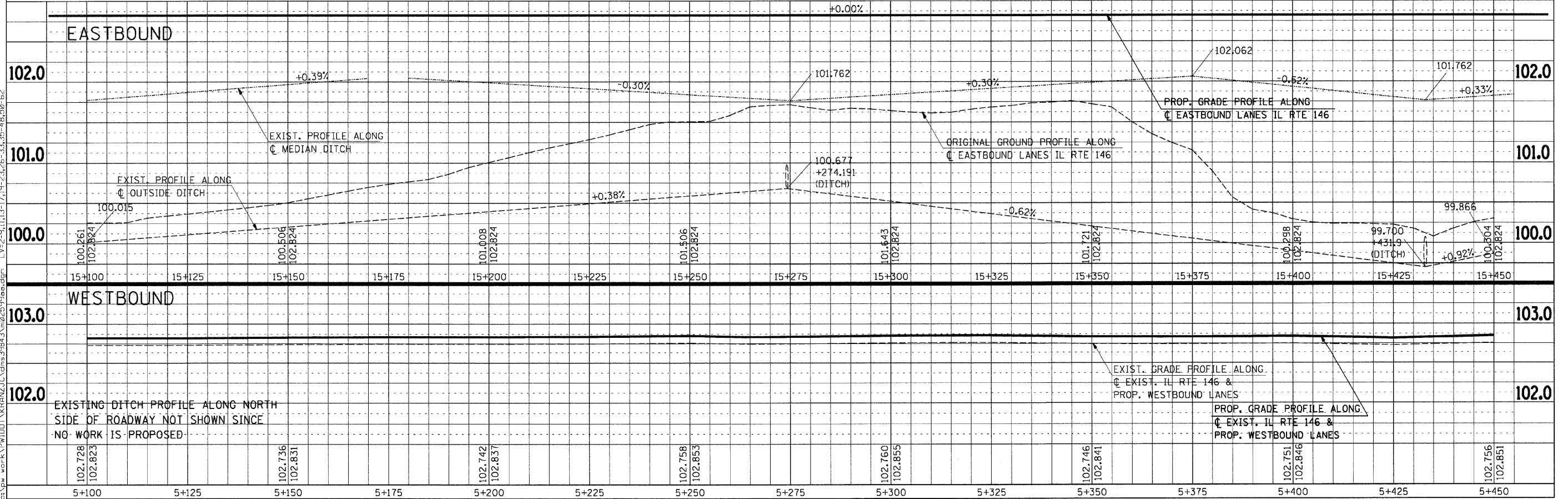
NOTE: CONSTRUCTION LIMITS ON NORTH SIDE HAVE BEEN OMITTED FOR CLARITY.

BY	DATE

FINAL SURVEY PLOTTED
NOTE BOOK TEMPLATE NO. AREAS CHECKED



BM #13 - TOP "T" POST LOCATED BEHIND ROW MARKER, STA 5+313 13.6 m RT, ELEV 102.208



Tuesday September 15, 2009 @ 8:30:36 AM
 c:\pwworkspace\p1001\KIRANZ\JC\dms43640\m025999.p1.dgn LV=2-23,25-63
 c:\pwworkspace\p1001\KIRANZ\JC\dms39843\m025999.p1.dgn LV=1-57-15,17-21,23-41,43-62
 c:\pwworkspace\p1001\KIRANZ\JC\dms39843\m025999.p1.dgn LV=2-9,11,13-17,19-23,26-33,35-48,50-62