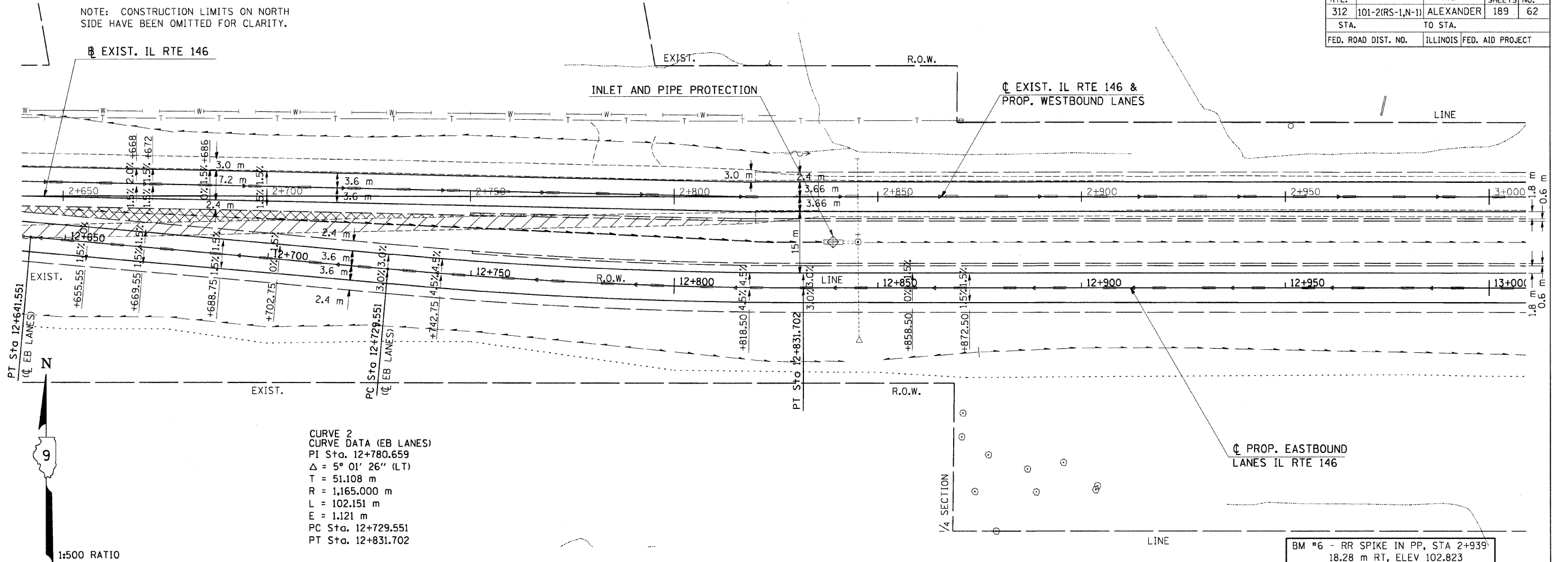


F.A.P. RTE.	SECTION	COUNTY	TOTAL SHEETS	SHEET NO.
312	101-2(RS-1,N-1)	ALEXANDER	189	62
STA.	TO STA.			
FED. ROAD DIST. NO.	ILLINOIS	FED. AID PROJECT		

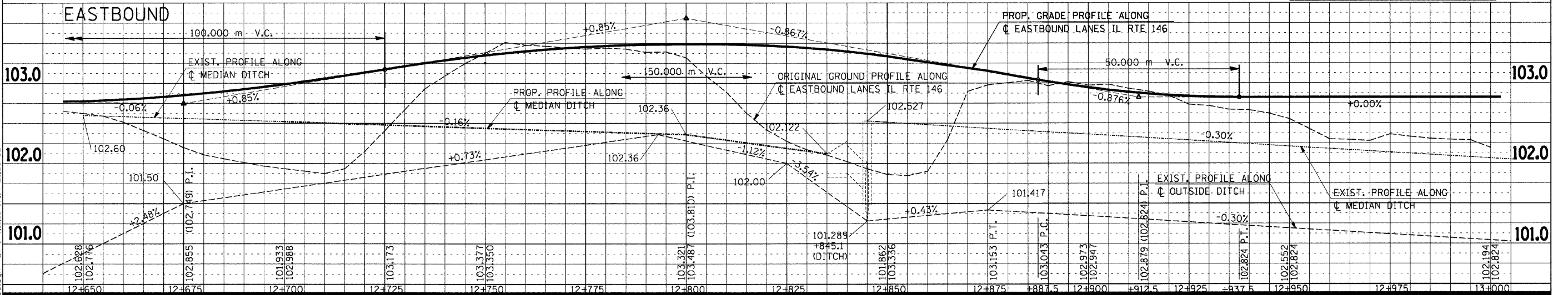
NOTE: CONSTRUCTION LIMITS ON NORTH SIDE HAVE BEEN OMITTED FOR CLARITY.



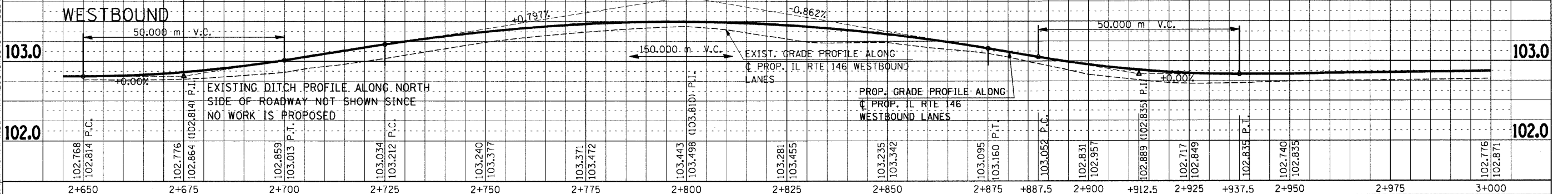
**CURVE 2  
CURVE DATA (EB LANES)**  
 PI Sta. 12+780.659  
 $\Delta = 5^\circ 01' 26''$  (LT)  
 T = 51.108 m  
 R = 1,165.000 m  
 L = 102.151 m  
 E = 1.121 m  
 PC Sta. 12+729.551  
 PT Sta. 12+831.702

BM #6 - RR SPIKE IN PP, STA 2+939  
 18.28 m RT, ELEV 102.823

**EASTBOUND**



**WESTBOUND**



**TEMPORARY EROSION CONTROL PLAN - STA 2+650 TO STA 3+000**

NO.	AREAS CHECKED	DATE	BY

Tuesday, September 15, 2009 @ 9:08:14 AM  
 c:\pwworkspace\p1001\KranzJC\dms43640\m02599pl.dgn LV=2-23-25-63  
 c:\pwworkspace\p1001\KranzJC\dms43640\m02599pl.dgn LV=2-23-25-63  
 c:\pwworkspace\p1001\KranzJC\dms43640\m02599pl.dgn LV=2-23-25-63  
 c:\pwworkspace\p1001\KranzJC\dms43640\m02599pl.dgn LV=2-23-25-63  
 c:\pwworkspace\p1001\KranzJC\dms43640\m02599pl.dgn LV=2-23-25-63