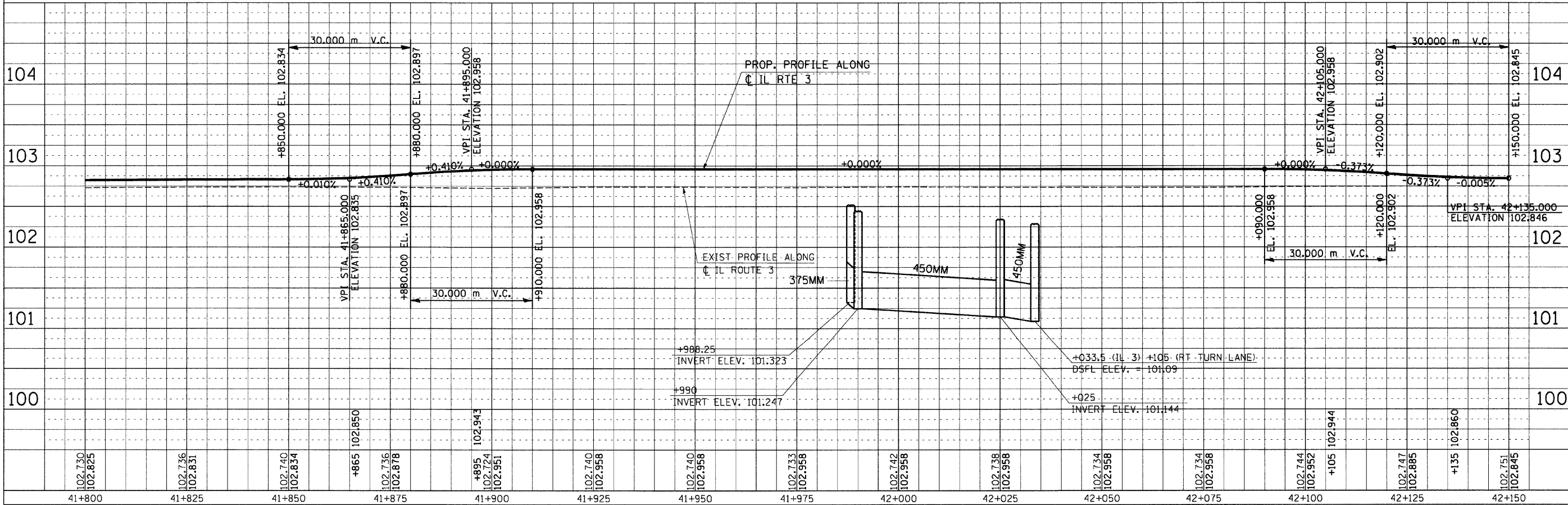
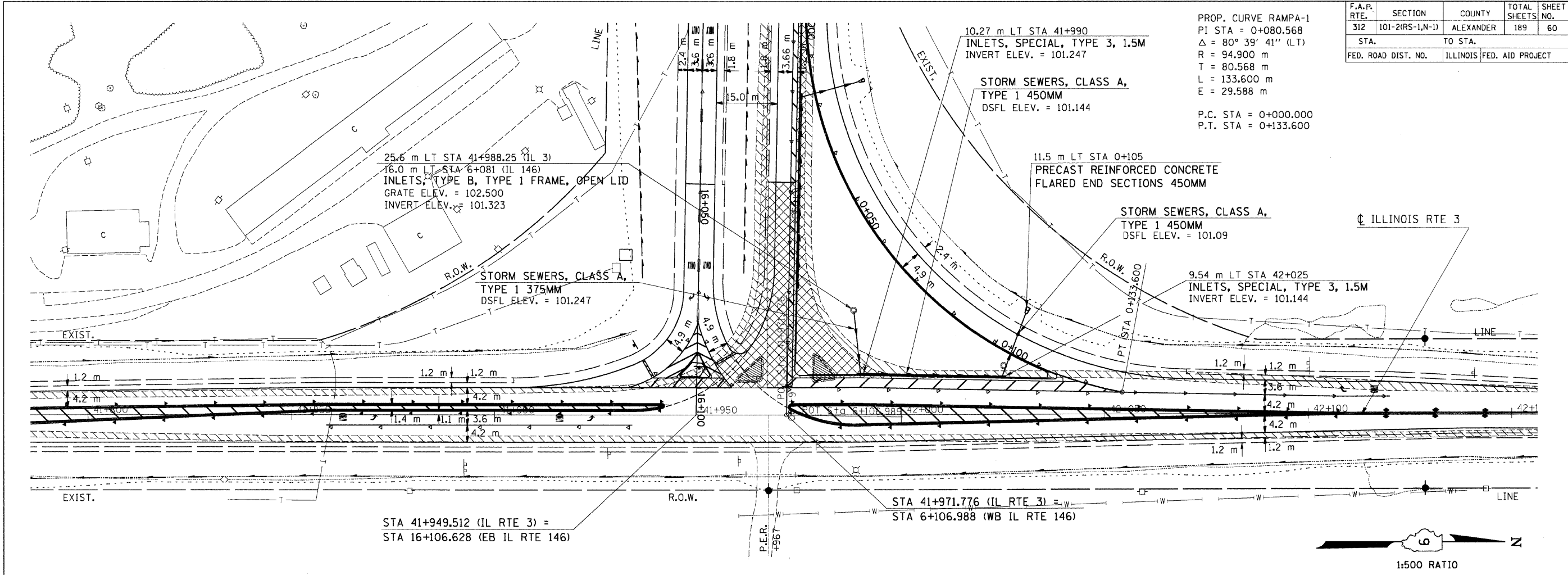


F.A.P. RTE.	SECTION	COUNTY	TOTAL SHEETS	SHEET NO.
312	101-2(RS-1,N-1)	ALEXANDER	189	60
STA.	TO STA.			
FED. ROAD DIST. NO.	ILLINOIS FED. AID PROJECT			

PROP. CURVE RAMPA-1
 PI STA = 0+080.568
 $\Delta = 80^\circ 39' 41''$ (L T)
 R = 94.900 m
 T = 80.568 m
 L = 133.600 m
 E = 29.588 m

 P.C. STA = 0+000.000
 P.T. STA = 0+133.600

BY	DATE
FINAL SURVEY PLOTTED	
NOTE BOOK TEMPLATE	
AREAS CHECKED	
NO.	



Tuesday, September 15, 2009 @ 10:25:54 AM
 c:\pwworkspace\pwwork\projects\78060\101-2(RS-1,N-1)\151719_20_25_43_45_60
 c:\pwworkspace\pwwork\projects\78060\101-2(RS-1,N-1)\151719_20_25_43_45_60
 c:\pwworkspace\pwwork\projects\78060\101-2(RS-1,N-1)\151719_20_25_43_45_60