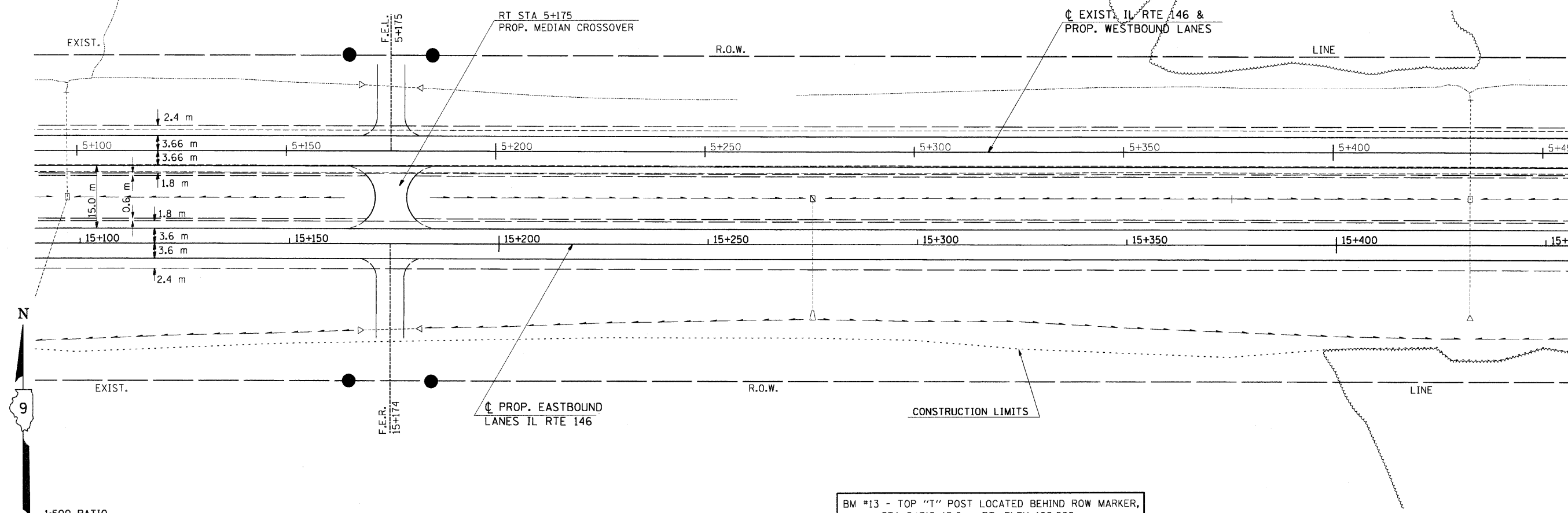


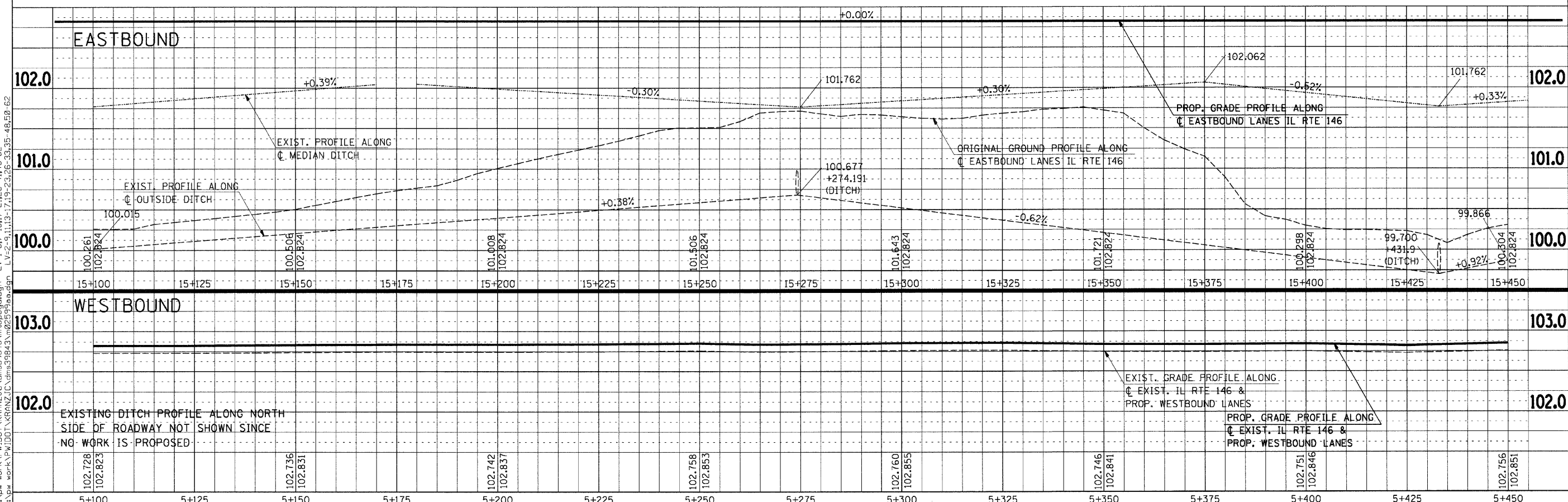
F.A.P. RTE.	SECTION	COUNTY	TOTAL SHEETS	SHEET NO.
312	101-2(RS-1,N-1)	ALEXANDER	189	48
STA. TO STA.		ILLINOIS FED. AID PROJECT		

NOTE: CONSTRUCTION LIMITS ON NORTH SIDE HAVE BEEN OMITTED FOR CLARITY.

FINAL SURVEY PLOTTED	BY	DATE
NOTE BOOK TEMPLATE AREAS CHECKED		
NO. _____		



BM #13 - TOP "T" POST LOCATED BEHIND ROW MARKER, STA 5+313 13.6 m RT, ELEV 102.208



PLAN-PROFILE - STA 5+100 TO STA 5+450

Tuesday September 15, 2009 @ 05:41 AM
 c:\pw\work\k\p1\dot\k\ranz\j\k\ms3640\m02999p1.dgn LV-2-20-24-63
 c:\pw\work\k\p1\dot\k\ranz\j\k\ms3640\m02999p1.dgn LV-1-57-15-17-21-23-41-43-62
 c:\pw\work\k\p1\dot\k\ranz\j\k\ms3640\m02999p1.dgn LV-2-9-11-13-15-17-19-21-23-25-27-29-31-33-35-37-39-41-43-45-47-49-51-53-55-57-59-61-63