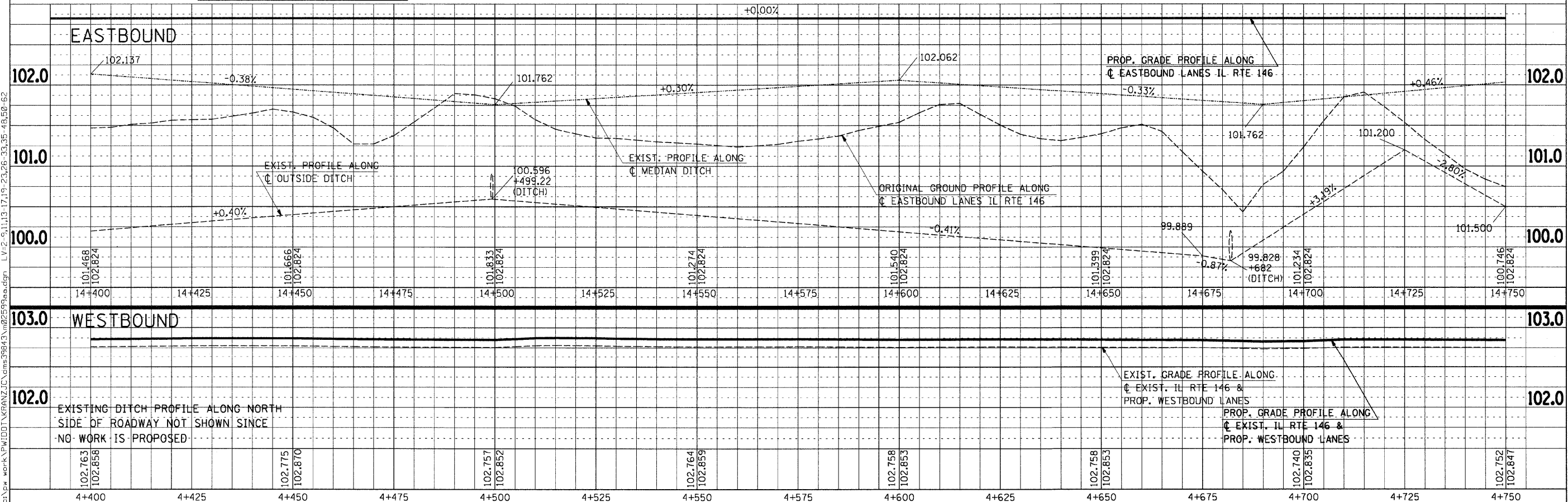
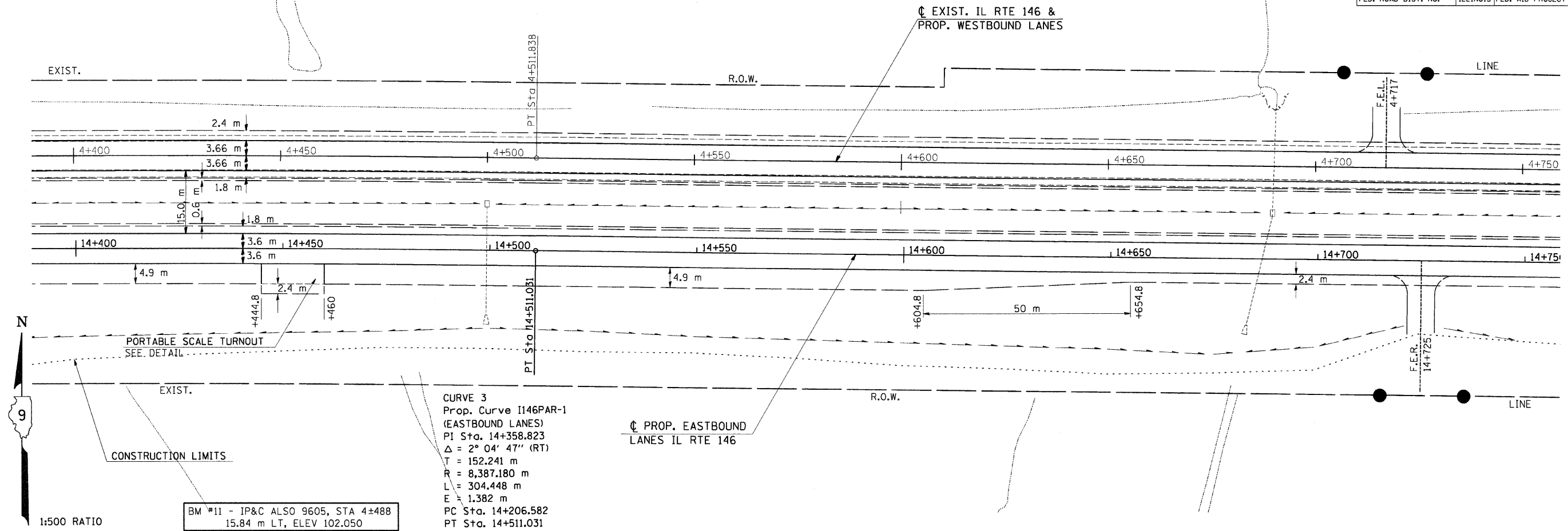


F.A.P. RTE.	SECTION	COUNTY	TOTAL SHEETS	SHEET NO.
312	101-2(RS-1,N-1)	ALEXANDER	189	46
STA. TO STA.		TO STA.		
FED. ROAD DIST. NO.		ILLINOIS	FED. AID PROJECT	

NOTE: CONSTRUCTION LIMITS ON NORTH SIDE HAVE BEEN OMITTED FOR CLARITY.

FINAL SURVEY	DATE
SURVEYED	
PLOTTED	
TEMPLATE	
AREAS	
CHECKED	
NO.	



Tuesday, September 15, 2009 @ 11:38:47 AM  
 c:\pwork\alexander\alexander\10259991.dgn LV=2-20-24-63  
 c:\pwork\alexander\alexander\10259991.dgn LV=1-5-7-15-17-19-21-23-62  
 c:\pwork\alexander\alexander\10259991.dgn LV=2-9-11-13-15-17-19-23-26-33-35-48-50-62

PLAN-PROFILE - STA 4+400 TO STA 4+750