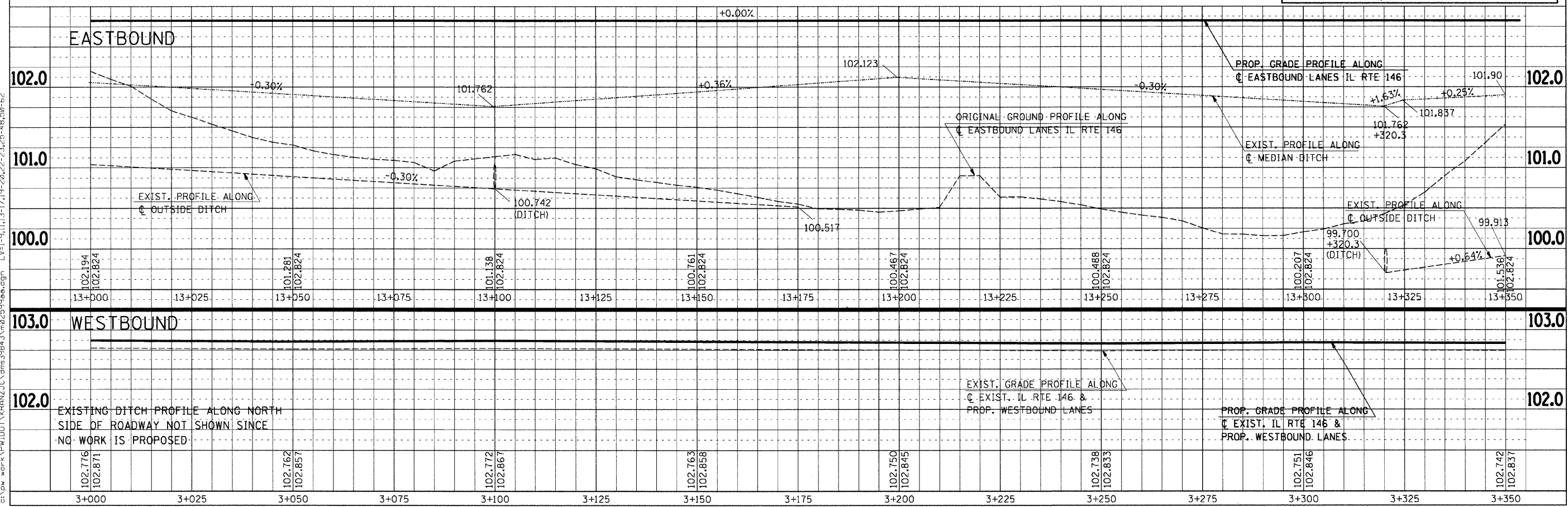
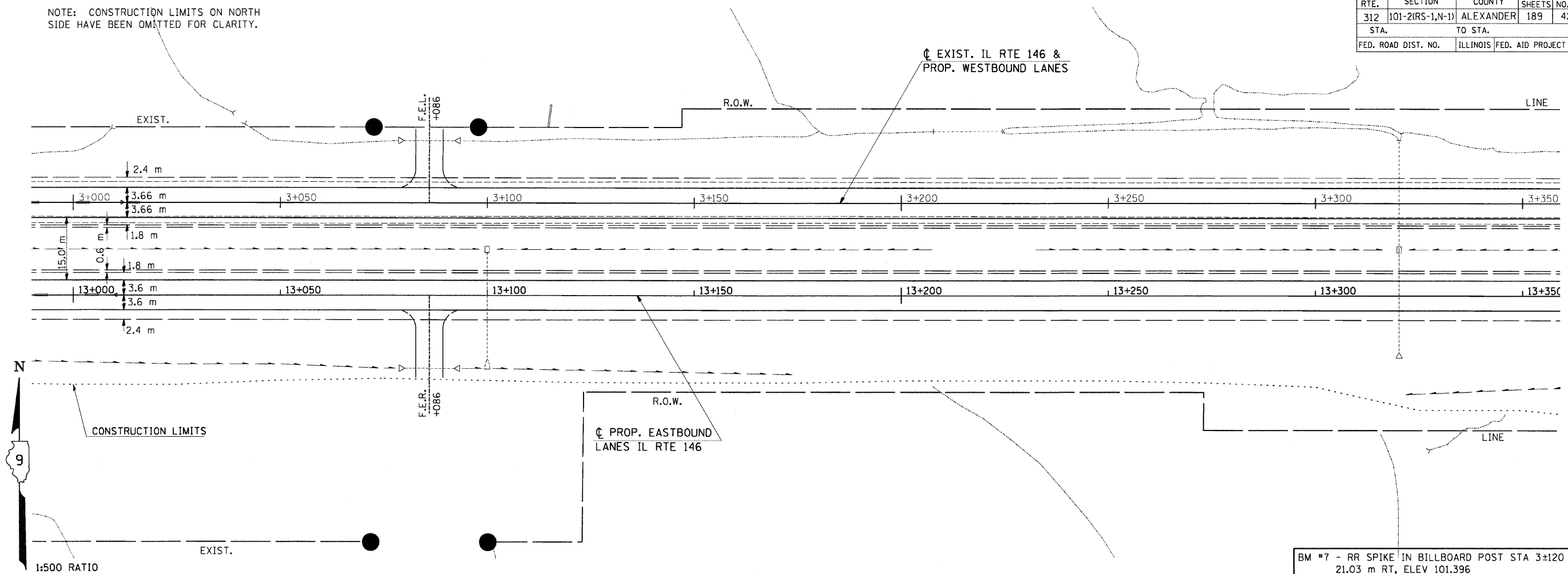


F.A.P. RTE.	SECTION	COUNTY	TOTAL SHEETS	SHEET NO.
312	101-2(RS-1,N-1)	ALEXANDER	189	42
STA. TO STA.		ILLINOIS FED. AID PROJECT		
FED. ROAD DIST. NO.				

NOTE: CONSTRUCTION LIMITS ON NORTH SIDE HAVE BEEN OMITTED FOR CLARITY.

FINAL SURVEY	BY	DATE
SURVEYED		
PLOTTED		
NOTE BOOK		
TEMP. PLATE		
AREAS CHECKED		
NO.		



Tuesday September 15, 2009 @ 10:05 AM  
 c:\pw-wor-k\pwwork\kranzjc\dms43640\m22599p1.dgn LV=2-20,24-63  
 c:\pw-wor-k\pwwork\kranzjc\dms39843\m2000p0.dgn LV=1-5,7-15,17-21,23-62  
 c:\pw-wor-k\pwwork\kranzjc\dms39843\m22599a0.dgn LV=1-9,11,13-17,19-20,22-23,25-48,50-62

PLAN-PROFILE - STA 3+000 TO STA 3+350