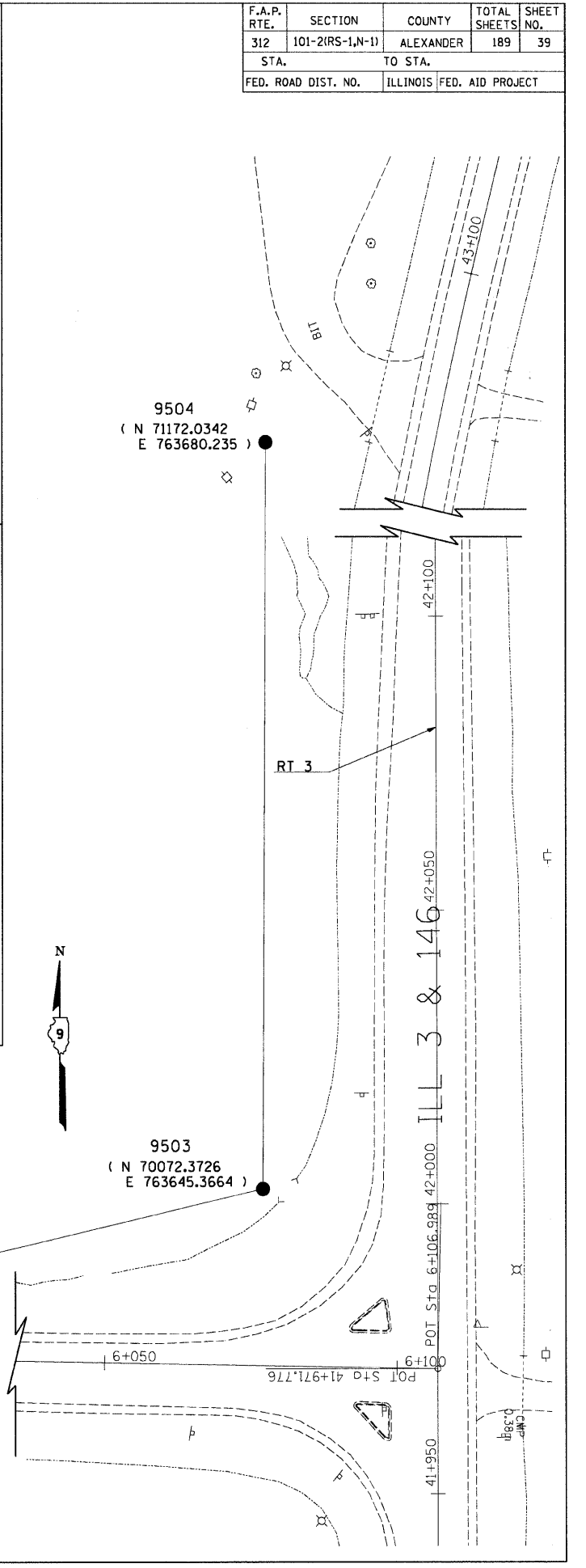
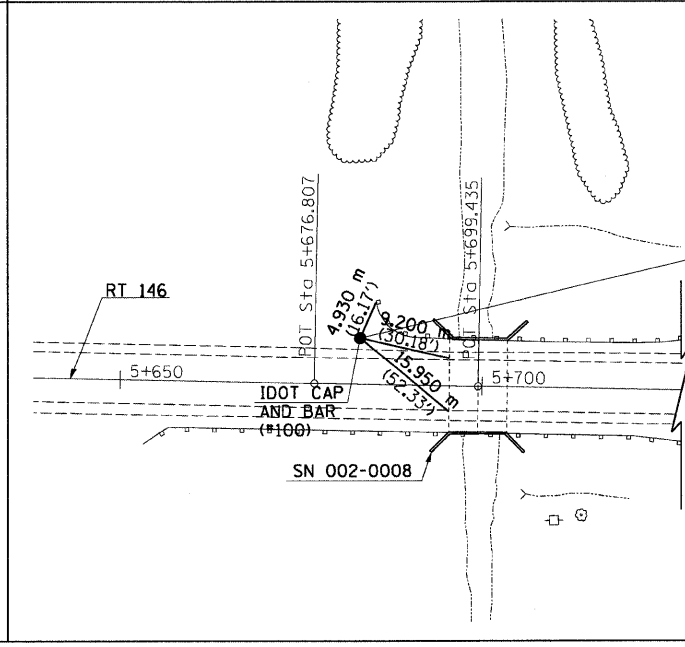
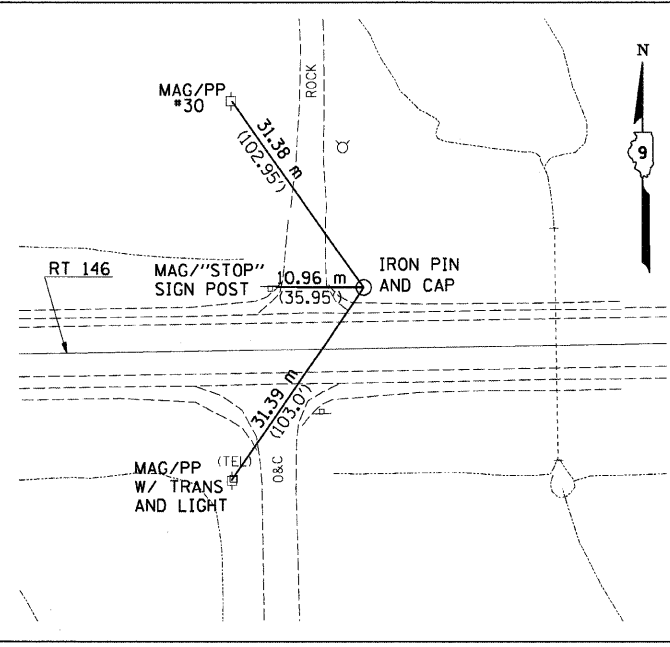
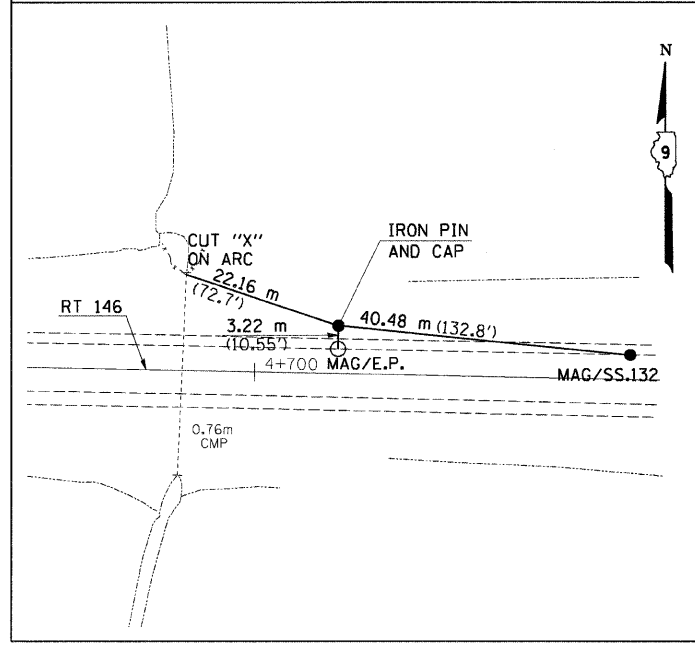
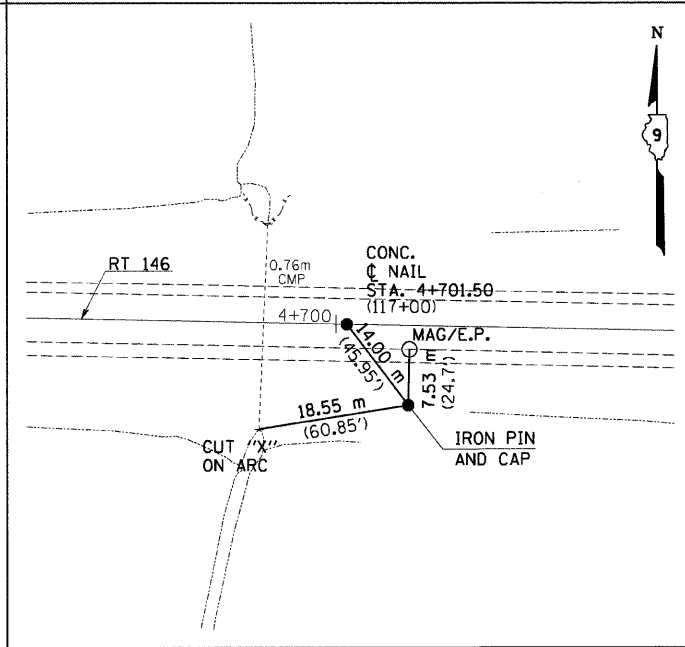
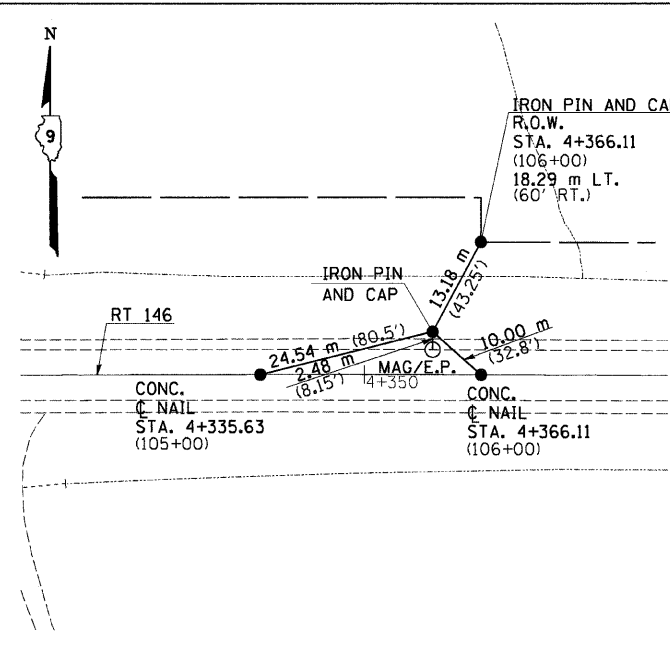
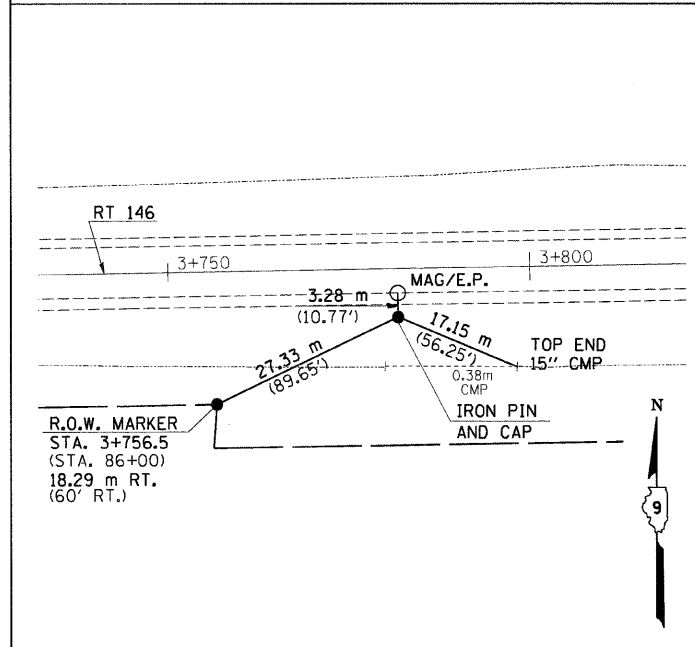
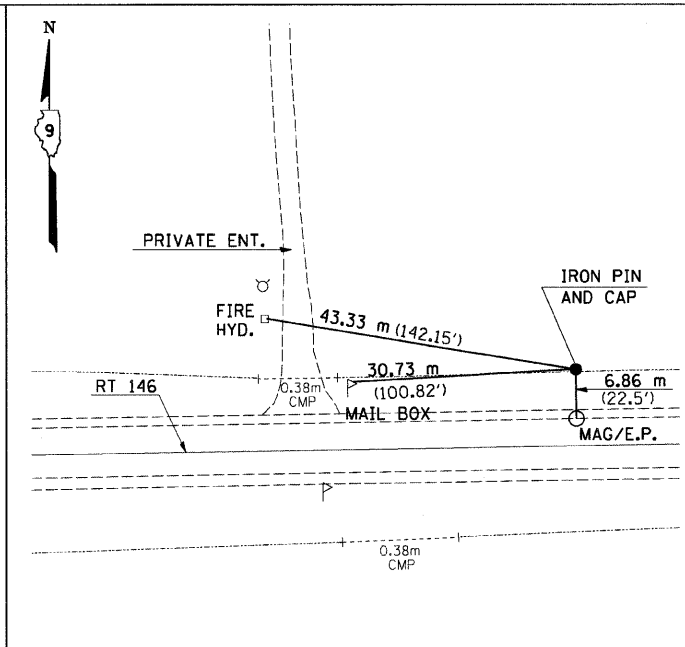
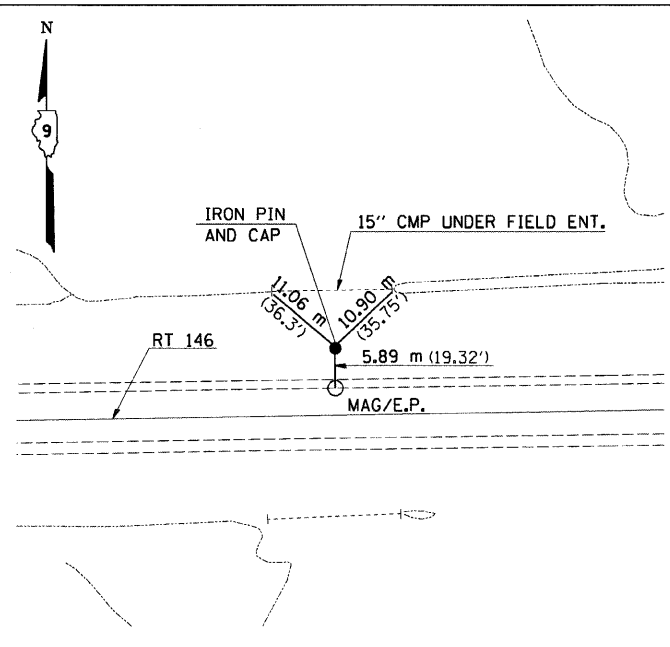
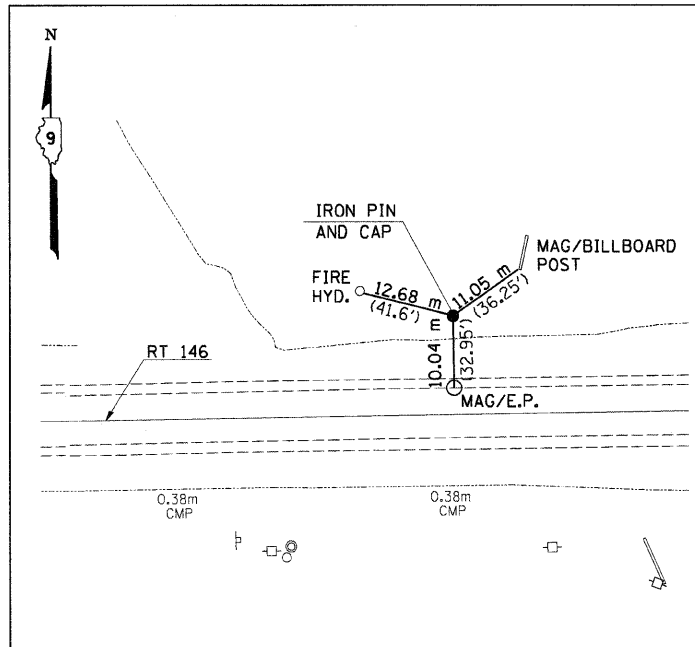


F.A.P. RTE.	SECTION	COUNTY	TOTAL SHEETS	SHEET NO.
312	101-2(RS-1,N-1)	ALEXANDER	189	39
STA. TO STA.		TO STA.		
FED. ROAD DIST. NO.		ILLINOIS	FED. AID PROJECT	



Tuesday September 15, 2009 @ 11:53:16 AM
 c:\pva\work\VP\WDD\CRANZ\JC\dms43640\m2259c2p3.dgn LV-2-63