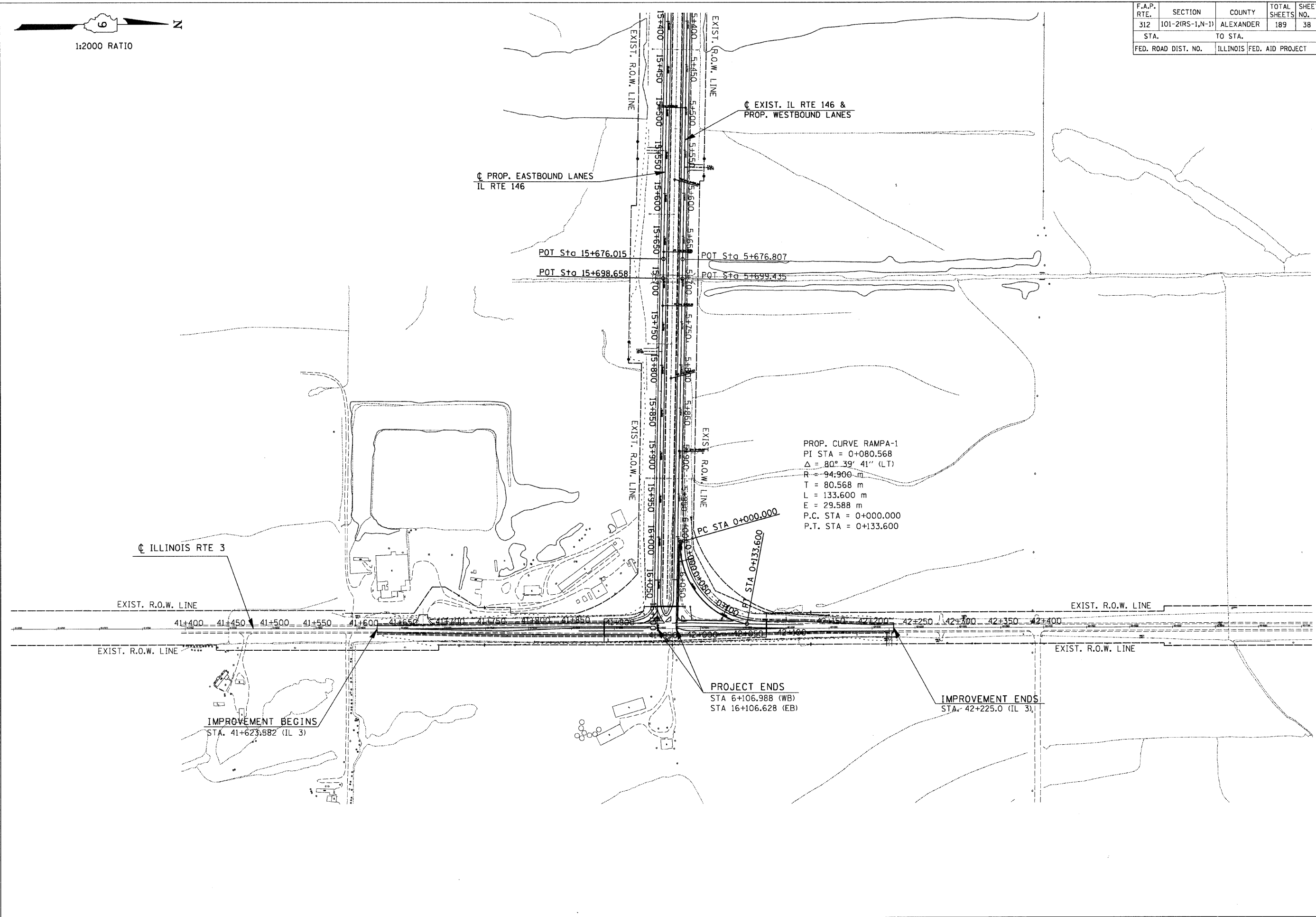
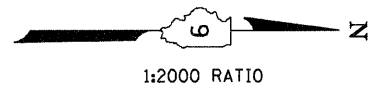


F.A.P. RTE.	SECTION	COUNTY	TOTAL SHEETS	SHEET NO.
312	101-2(RS-1,N-1)	ALEXANDER	189	38
STA.		TO STA.		
FED. ROAD DIST. NO.		ILLINOIS FED. AID PROJECT		



Wednesday, September 16, 2009 @ 7:49:14 AM
 c:\pwwork\p\1001\KRANZ\JC\dms4364\pmgoep1.dgn LV=2-46,48-63

GENERAL PLAN - STA. 5+400 WB (15+400 EB) TO STA. 6+106.988 WB (16+106.628 EB) IL 146

GENERAL PLAN - STA. 41+400 TO STA. 42+400 IL RT 3