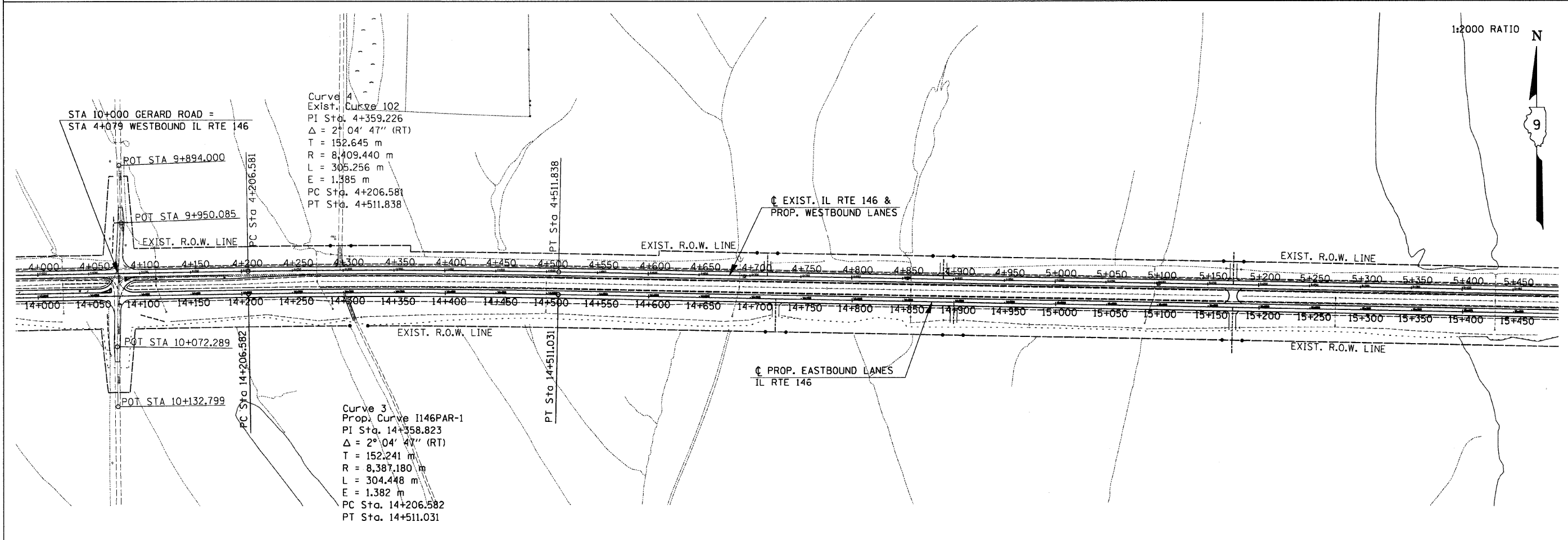
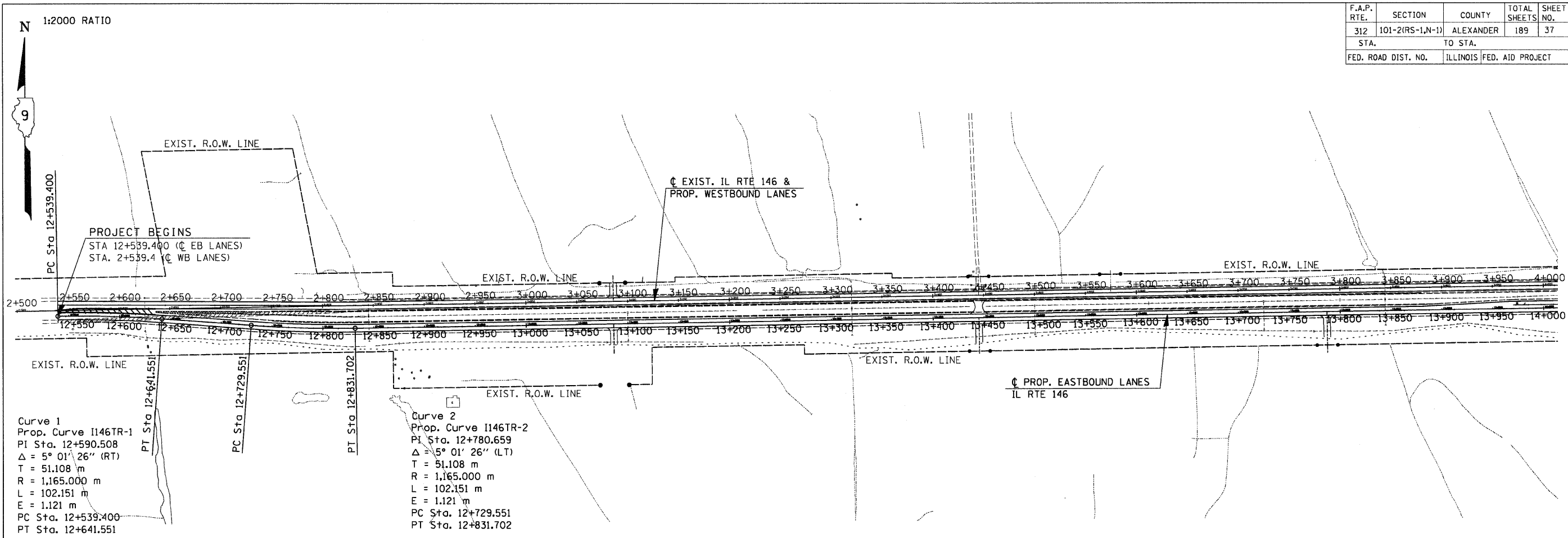


F.A.P. RTE.	SECTION	COUNTY	TOTAL SHEETS	SHEET NO.
312	101-2(RS-1,N-1)	ALEXANDER	189	37
STA.	TO STA.			
FED. ROAD DIST. NO.	ILLINOIS	FED. AID PROJECT		



GENERAL PLAN - STA. 2+500 WB TO STA. 5+450 WB (15+450 EB) IL 146

Wednesday September 16, 2009 @ 7:54:36 AM  
 c:\p\_wor-k\p\1001\KIRANZJC\dms43640\imgcepl.dgn LV-2-46,48,63