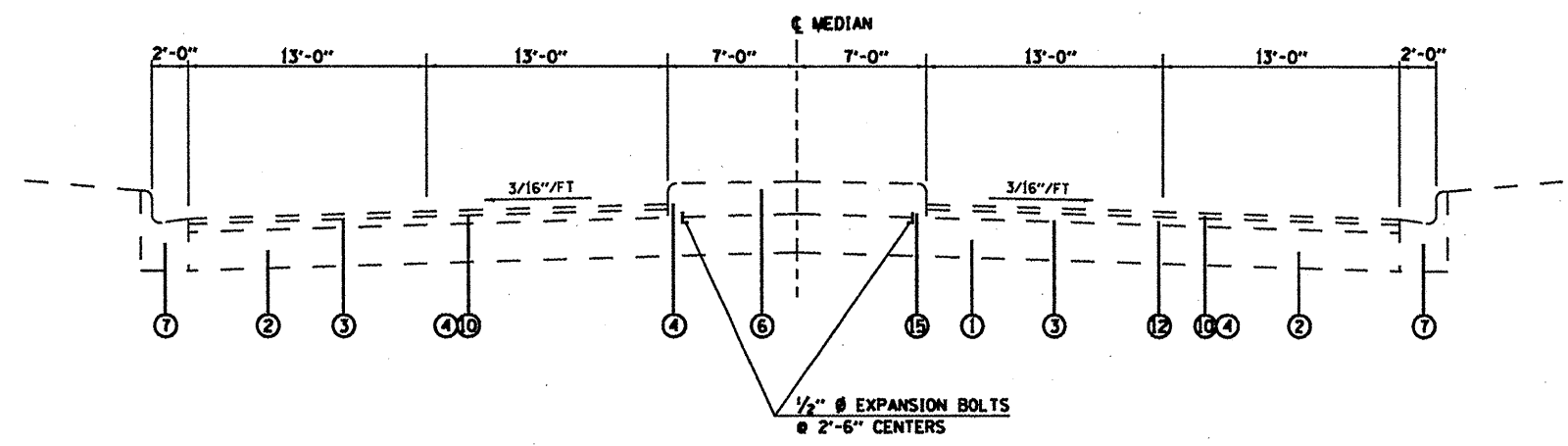
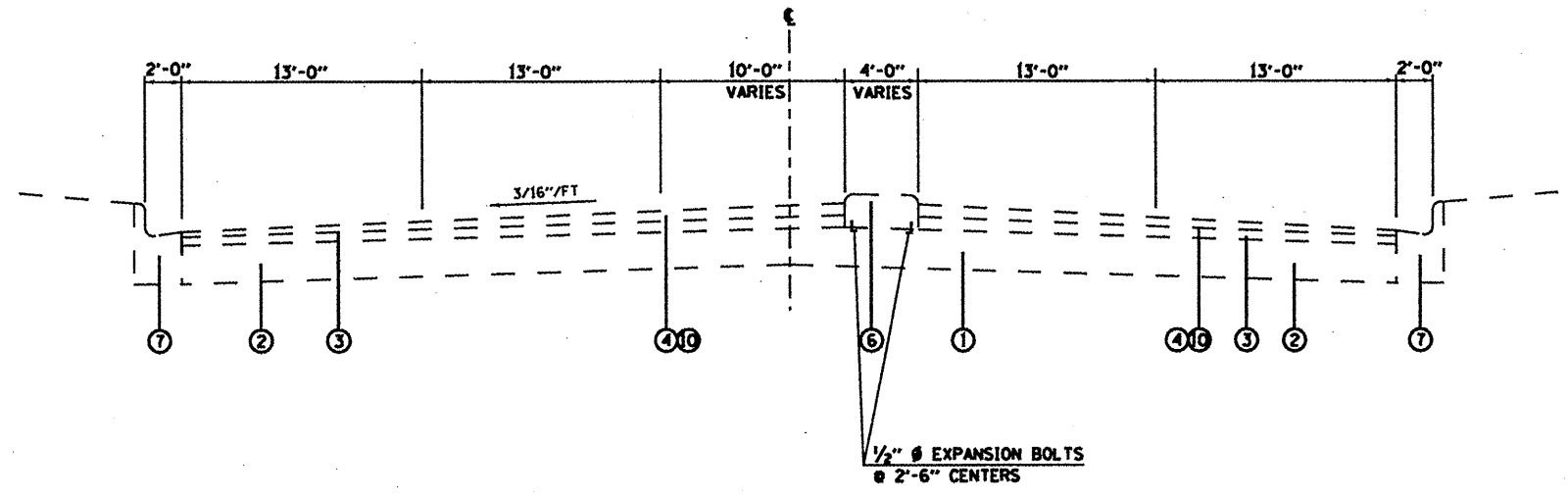


**EXISTING TYPICAL SECTION**  
 STA. 329+25 TO STA. 330+09  
 STA. 341+50 TO STA. 342+10  
 (LOOKING EAST)



**EXISTING TYPICAL SECTION**  
 STA. 335+33 TO STA. 337+57  
 (LOOKING EAST)



**EXISTING TYPICAL SECTION**  
 STA. 330+09 TO STA. 335+33  
 (LOOKING EAST)

- LEGEND**
- ① EXISTING PCC PAVEMENT
  - ② EXISTING PCC BASE COURSE WIDENING
  - ③ EXISTING HMA LEVELING BINDER
  - ④ EXISTING HMA SURFACE 1 1/2 "
  - ⑤ EXISTING HMA SHOULDER
  - ⑥ EXISTING CONCRETE MEDIAN
  - ⑦ EXISTING COMBINATION CONCRETE CURB AND GUTTER
  - ⑧ EXISTING SIDEROAD
  - ⑨ PAVED SHOULDER REMOVAL/EARTH EXCAVATION/HMA SHOULDER 6"
  - ⑩ HMA SURFACE REMOVAL 1 1/2 "
  - ⑪ HMA SURFACE REMOVAL 3/4 "
  - ⑫ PROPOSED STRIP REFLECTIVE CRACK CONTROL TREATMENT
  - ⑬ PROPOSED BITUMINOUS MATERIAL PRIME COAT
  - ⑭ PROPOSED AGGREGATE PRIME COAT
  - ⑮ PROPOSED LEVELING BINDER (MACHINE METHOD) N70 3/4 "
  - ⑯ PROPOSED HMA SURFACE COURSE MIX "D" N70 1 1/2 "
  - ⑰ PROPOSED HMA SHOULDER (1 1/2")
  - ⑱ PROPOSED AGGREGATE SHOULDER WEDGE
  - ⑲ EXISTING AGGREGATE SHOULDER

|   |                     |            |           |   |                                  |                     |                  |         |        |                 |   |
|---|---------------------|------------|-----------|---|----------------------------------|---------------------|------------------|---------|--------|-----------------|---|
| FILE NAME *   | USER NAME = alfordb | DESIGNED - | REVISED - | <b>STATE OF ILLINOIS<br/>DEPARTMENT OF TRANSPORTATION</b> | <b>EXISTING TYPICAL SECTIONS</b> |                     | F.A.J.L.<br>RTE. | SECTION | COUNTY | TOTAL SHEET NO. |   |
| al\pe_wor\p\p\alfordb\08175875\087584-sh-t-plan.dgn |                     | DRAWN -    | REVISED - |   | SCALE: NONE                      | SHEET NO. OF SHEETS | STA. TO STA.     | 9128    | 28RS-6 | MADISON         | 33 6  |
|   |                     | CHECKED -  | REVISED - |   |                                  |                     |                  |         |        |                 | CONTRACT NO. 76084                            |
|   |                     | DATE -     | REVISED - |   |                                  |                     |                  |         |        |                 | FED. ROAD DIST. NO. ILLINOIS/FED. AID PROJECT |