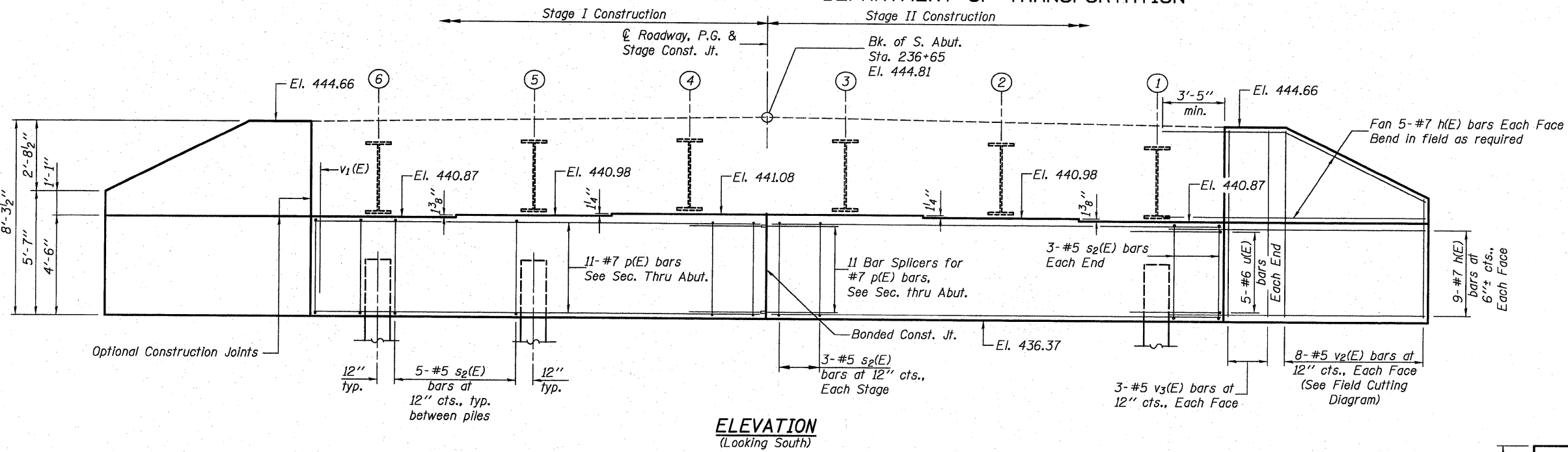


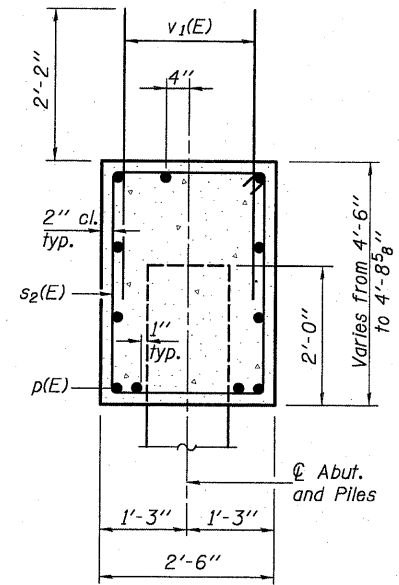
0300239-74310-17-SABT.DGN NOV. 30, 2009

**STATE OF ILLINOIS
DEPARTMENT OF TRANSPORTATION**

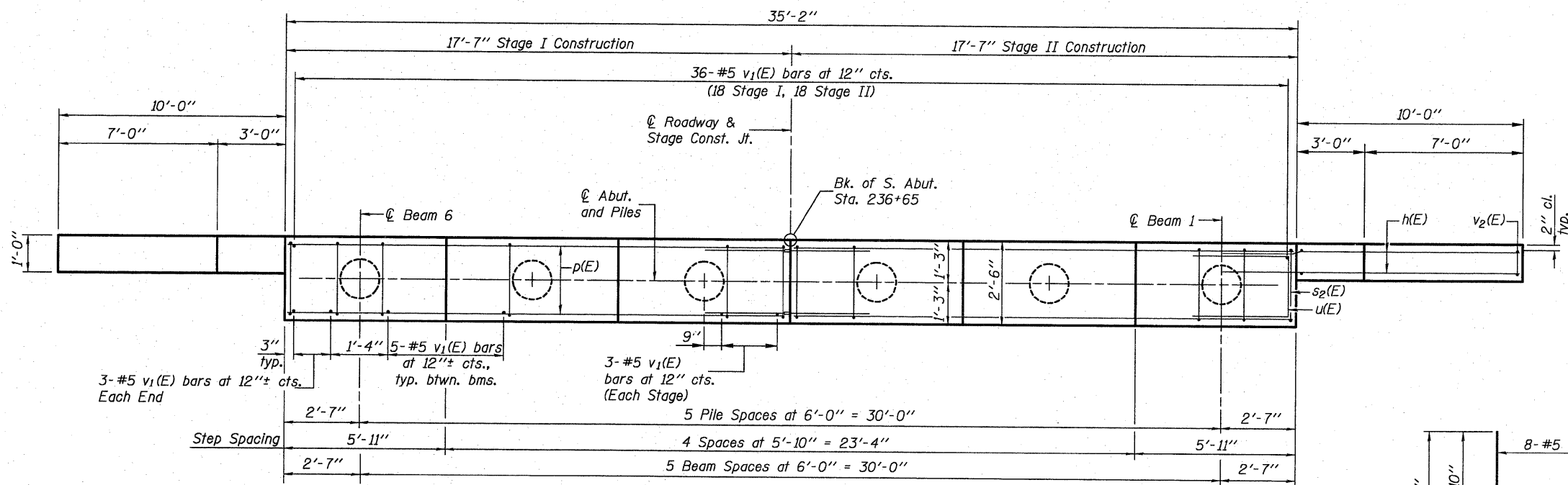
Notes:
Pour steps monolithically with cap.



ELEVATION
(Looking South)



SEC. THRU ABUT.



PLAN

BILL OF MATERIAL

Bar	No.	Size	Length	Shape
h(E)	56	#7	14'-0"	—
p(E)	22	#7	17'-3"	—
s2(E)	32	#5	13'-7"	□
u(E)	10	#6	9'-0"	□
v1(E)	68	#5	4'-4"	—
v2(E)	16	#5	13'-0"	—
v3(E)	12	#5	7'-10"	—
Structure Excavation		Cu. Yd.		118
Concrete Structures		Cu. Yd.		20.4
Reinforcement Bars, Epoxy Coated		Pound		3,590
Furnishing Metal Shell Piles 14"x0.312"		Foot		378
Driving Piles		Foot		378

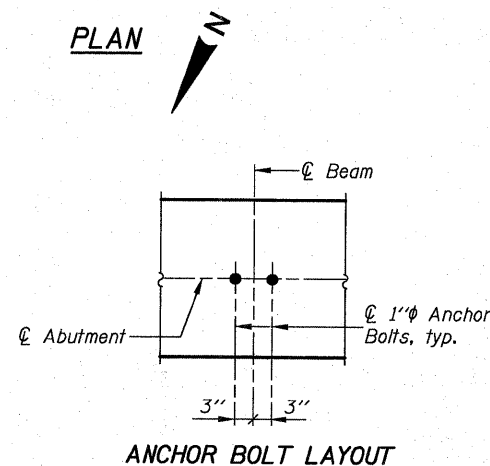
For details of Bar Splicers, see sht. 19 of 23.
For details of piles, see sht. 20 of 23.

PILE DATA

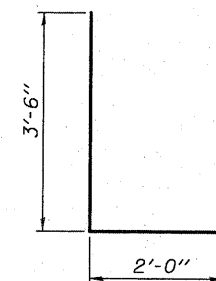
Type: Metal Shell 14"x0.312"
Nominal Required Bearing: 480 kips
Factored Resistance Available: 240 kips
Est. Length: 63 feet
No. Production Piles: 6
No. Test Piles: 0

DESIGNED	B.G.H.
CHECKED	L.D.G.
DRAWN	K.H.L.
CHECKED	B.G.H.

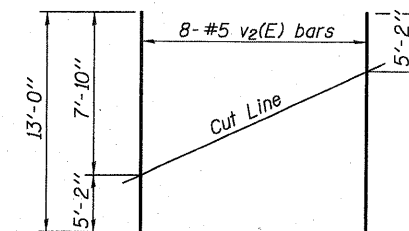
AI-O 10-1-08



ANCHOR BOLT LAYOUT



BAR u(E)



FIELD CUTTING DIAGRAM

Order v2(E) full length. Cut as shown and use remainder of bars in opposite face.

SOUTH ABUTMENT

SHEET NO. 17 23 SHEETS	F.A.S. RTE. 739	SECTION 1BR	COUNTY GREENE	TOTAL SHEETS 150	SHEET NO. 138
	S.N. 031-0039		CONTRACT NO. 76410		
FED. ROAD DIST. NO. ILLINOIS FED. AID PROJECT					

H.M. & G. NO. 6020.161