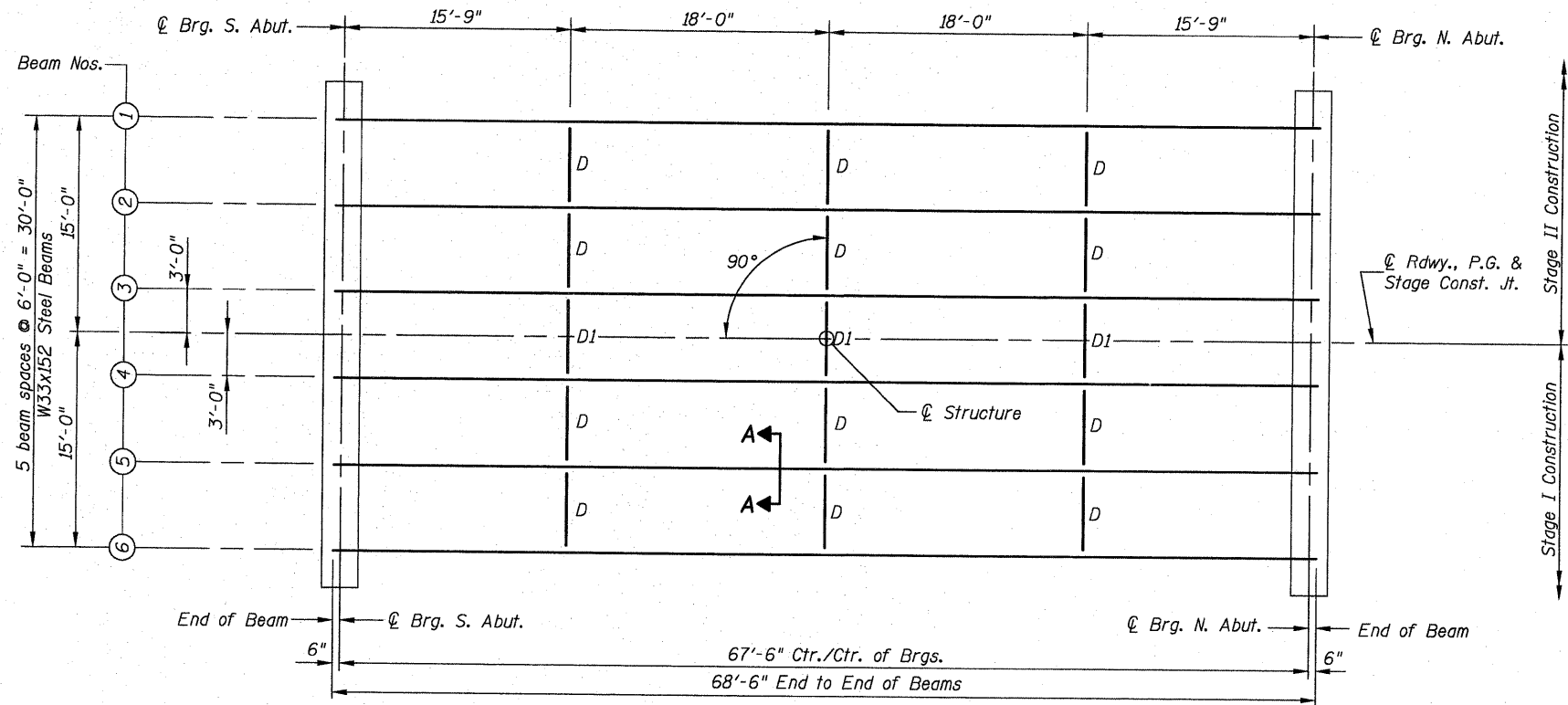
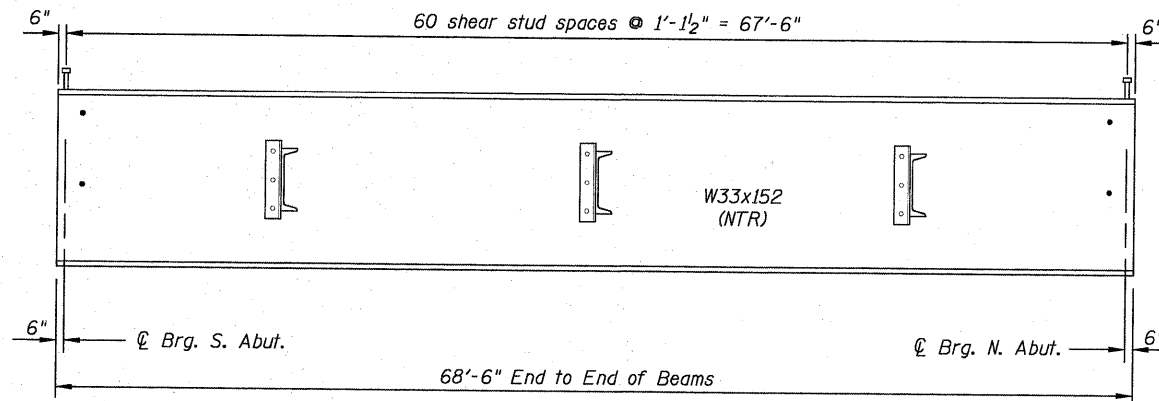


STATE OF ILLINOIS
DEPARTMENT OF TRANSPORTATION



FRAMING PLAN

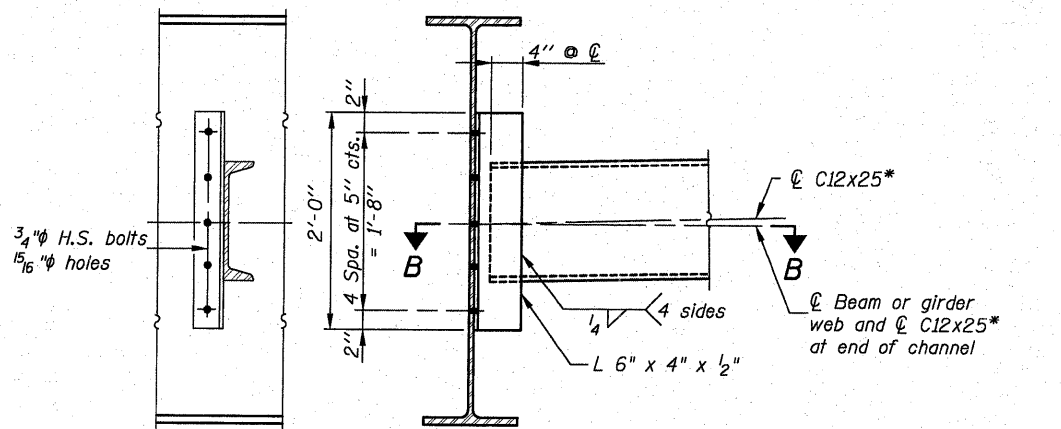
All Beams are W33x152 (NTR) and AASHTO M270, Gr. 50.



BEAM ELEVATION

Notes:

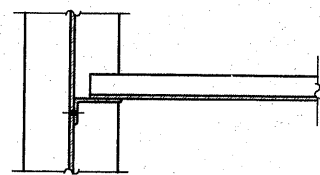
- Two hardened washers required for each set of oversized holes.
- All cross frames or diaphragms shall be installed as steel is erected and secured with erection pins and bolts except as otherwise noted. Individual cross frames or diaphragms at supports may be temporarily disconnected to install bearing anchor rods.
- Load carrying components designated "NTR" shall conform to the Supplemental Requirements for Notch Toughness, Zone 2.
- Bolts in slots shall be finger tight until the second stage pour is complete. Position slots so bolts start at one end with no concrete load and finish near the opposite end under deck load allowing maximum displacement without laterally stressing main members. All holes shall have appropriate hardened or plate washers.



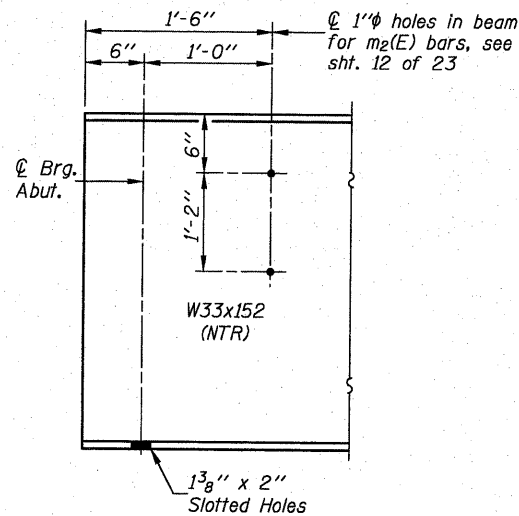
DIAPHRAGM D

(12 Required)

* Alternate channel C12x30 is permitted to facilitate material acquisition. Calculated weight of structural steel is based on the lighter section.

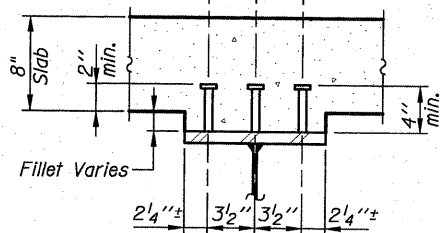


SECTION B-B

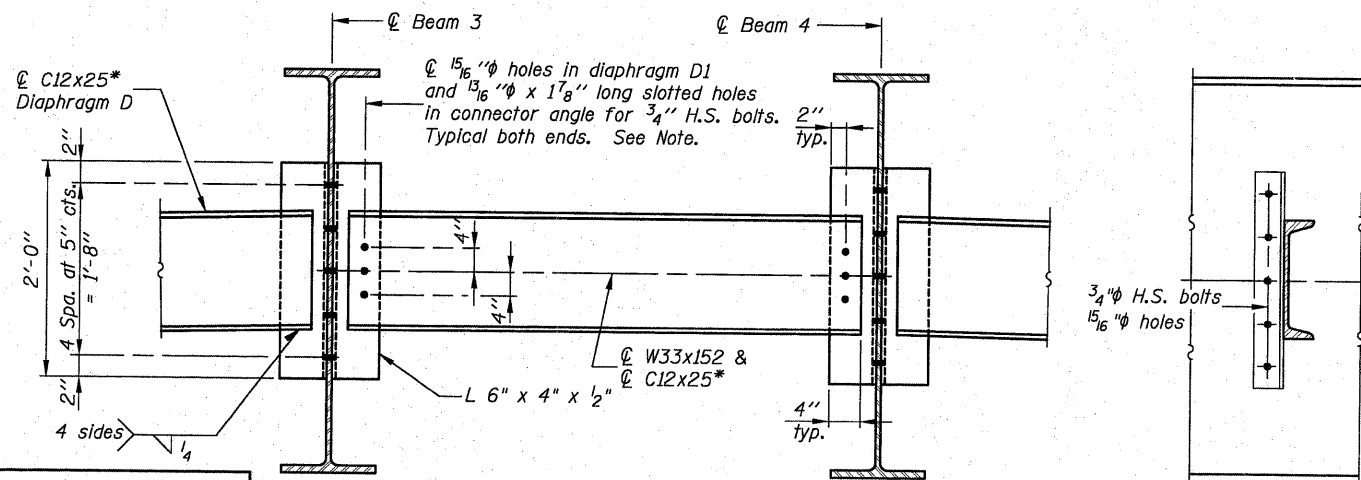


TYP. END OF BEAM ELEVATION

3/4" Granular or solid flux filled headed studs automatically end welded to flange. (No. Req'd. = 1,098)



SECTION A-A



DIAPHRAGM D1

(3 Required)

DESIGNED	B.G.H.
CHECKED	L.D.G.
DRAWN	K.H.L.
CHECKED	B.G.H.

STRUCTURAL STEEL

SHEET NO. 15 23 SHEETS	F.A.S. RTE. 739	SECTION 1BR	COUNTY GREENE	TOTAL SHEETS 150	SHEET NO. 136
	S.N. 031-0039		CONTRACT NO. 76410		
FED. ROAD DIST. NO. -		ILLINOIS FED. AID PROJECT			