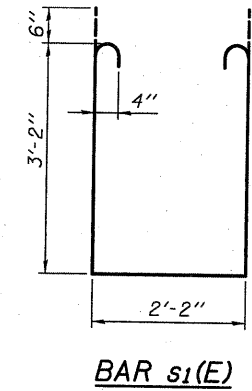
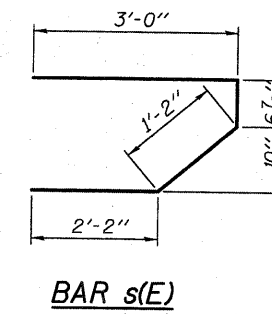
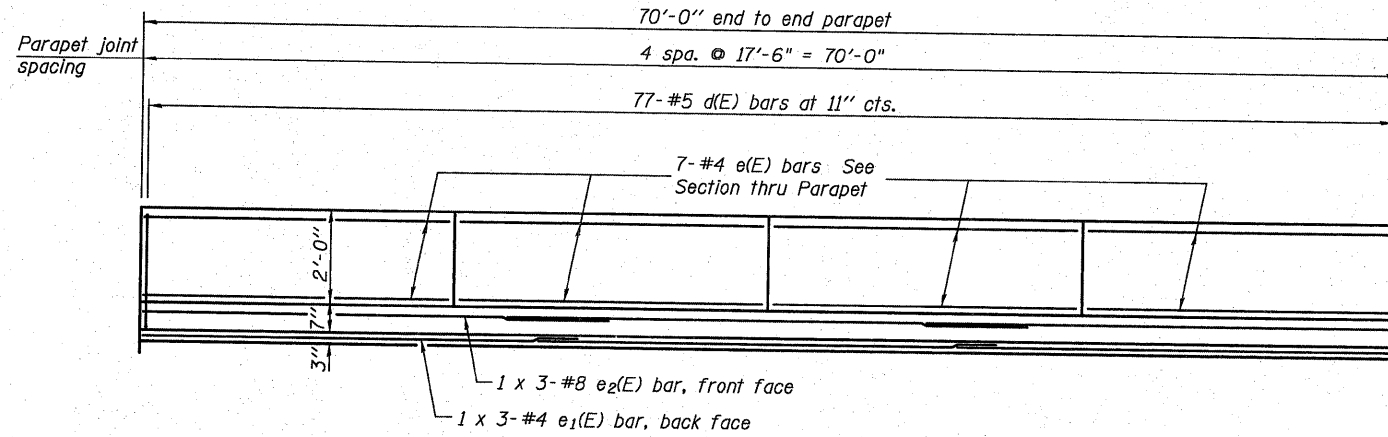
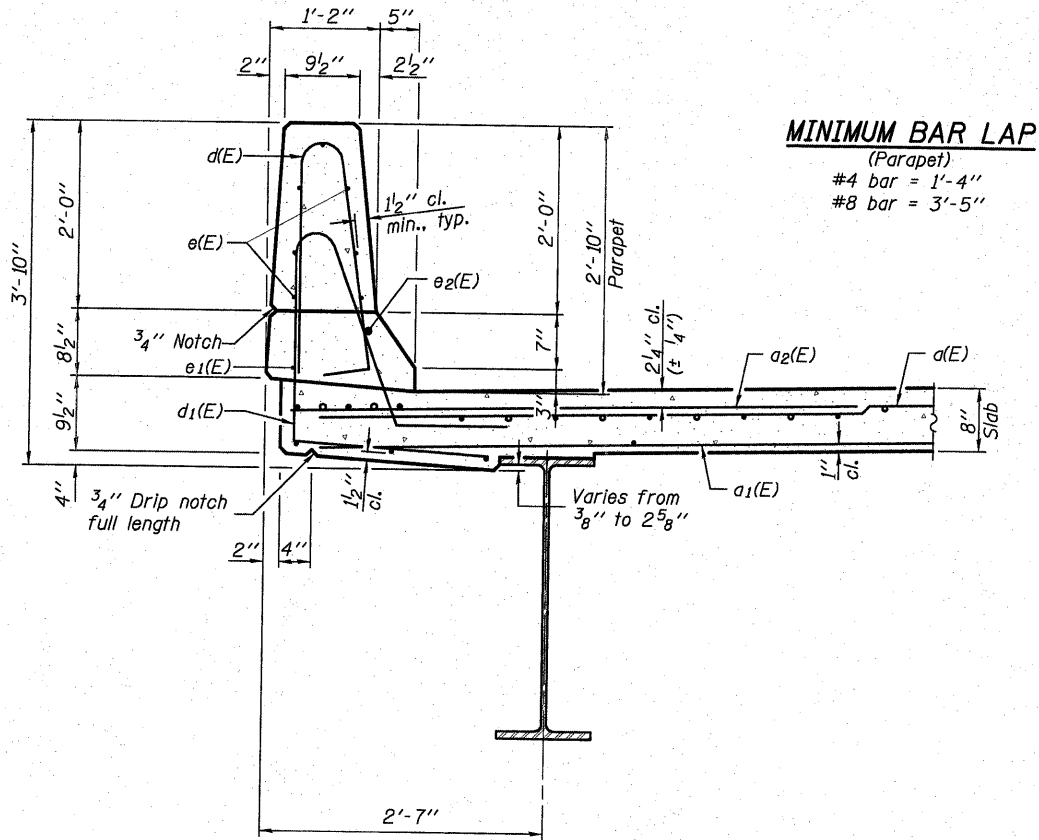


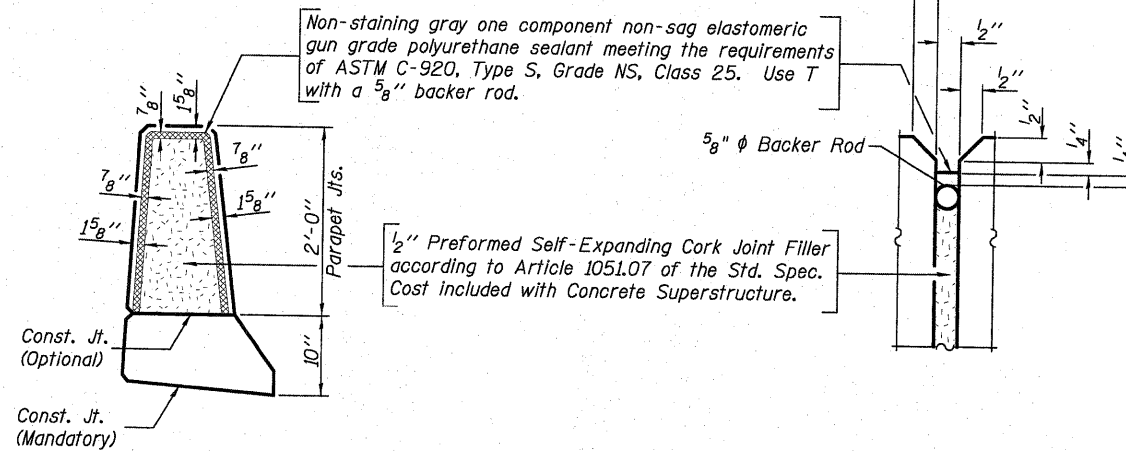
STATE OF ILLINOIS  
DEPARTMENT OF TRANSPORTATION



**INSIDE ELEVATION OF PARAPET**



**SECTION THRU PARAPET**

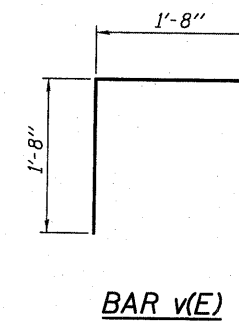
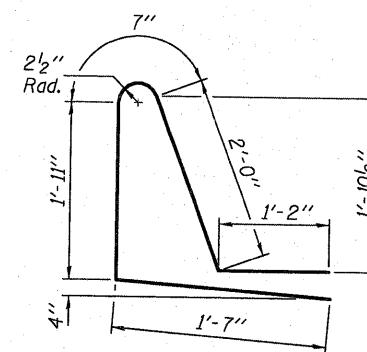
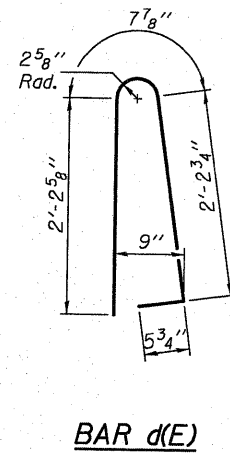


**PARAPET JOINT DETAILS**

**SUPERSTRUCTURE BILL OF MATERIAL**

Bar	No.	Size	Length	Shape
d(E)	240	#5	17'-1"	—
d <sub>1</sub> (E)	170	#5	16'-8"	—
a <sub>2</sub> (E)	240	#6	6'-0"	—
b(E)	76	#5	35'-11"	—
b <sub>1</sub> (E)	96	#5	24'-8"	—
d(E)	154	#5	5'-7"	⌋
d <sub>1</sub> (E)	154	#5	7'-3"	⌋
e(E)	56	#4	17'-3"	—
e <sub>1</sub> (E)	6	#4	24'-2"	—
e <sub>2</sub> (E)	6	#8	25'-7"	—
m(E)	8	#6	17'-3"	—
m <sub>1</sub> (E)	12	#6	17'-3"	—
m <sub>2</sub> (E)	24	#6	7'-8"	—
m <sub>3</sub> (E)	8	#6	5'-8"	—
m <sub>4</sub> (E)	4	#6	2'-2"	—
m <sub>5</sub> (E)	4	#6	2'-8"	—
s(E)	84	#5	6'-11"	⌋
s <sub>1</sub> (E)	64	#4	9'-6"	⌋
v(E)	72	#5	3'-4"	⌋
Reinforcement Bars, Epoxy Coated		Pound	20,080	
Concrete Superstructure		Cu. Yds.	103.3	

Bars indicated thus 1 x 3-#4 etc. indicates 1 line of bars with 3 lengths per line.



**SUPERSTRUCTURE DETAILS**

DESIGNED	B.G.H.
CHECKED	L.D.G.
DRAWN	K.H.L.
CHECKED	B.G.H.

S-I-D 10-1-08

SHEET NO. 11 23 SHEETS	F.A.S. RTE. 739	SECTION 1BR	COUNTY GREENE	TOTAL SHEETS 150	SHEET NO. 132
	S.N. 031-0039		CONTRACT NO. 76410		
FED. ROAD DIST. NO. _		ILLINOIS		FED. AID PROJECT	