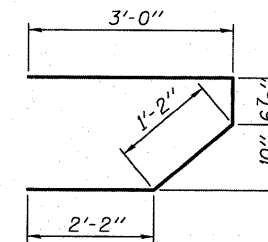
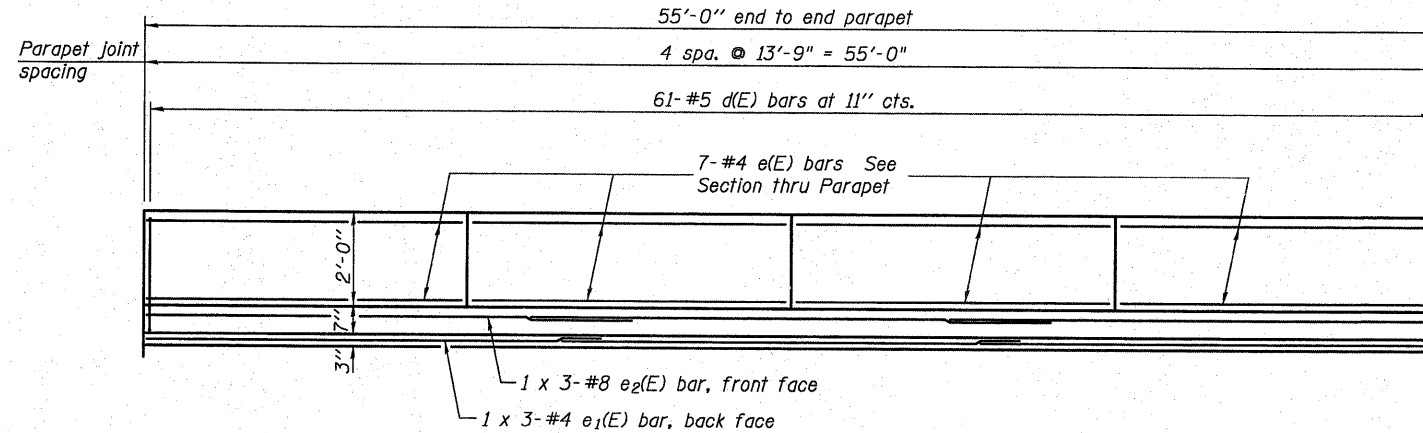
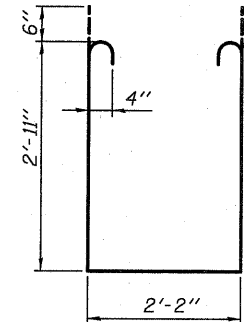


STATE OF ILLINOIS
DEPARTMENT OF TRANSPORTATION



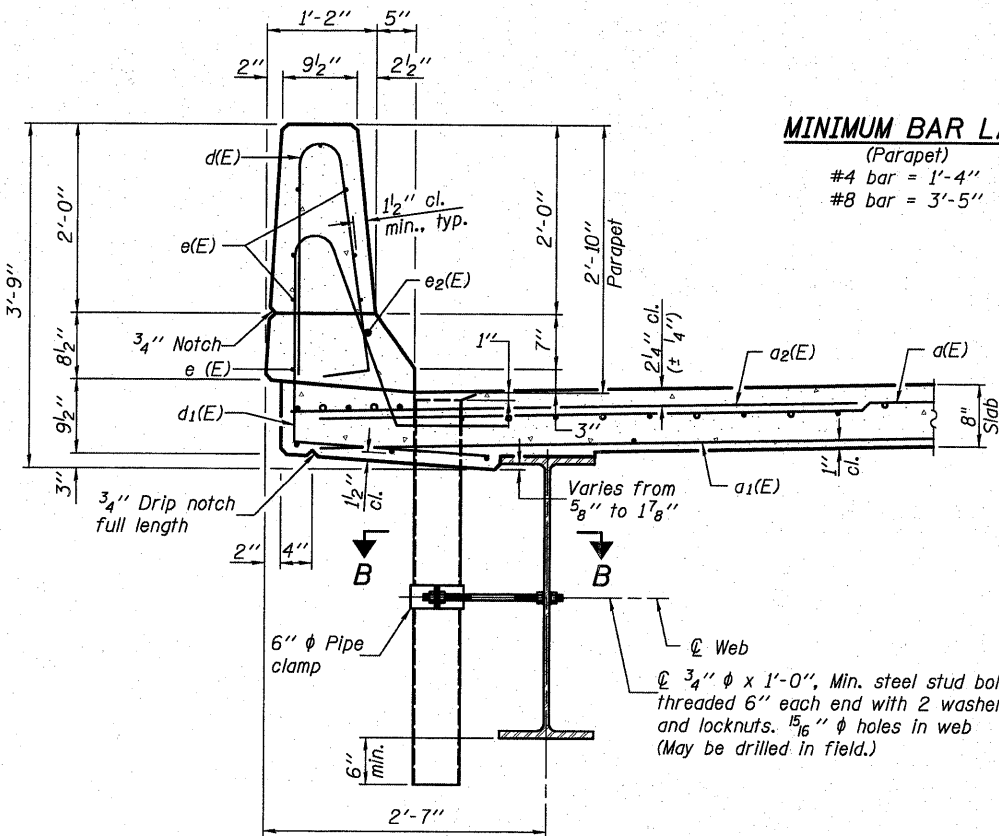
BAR s(E)



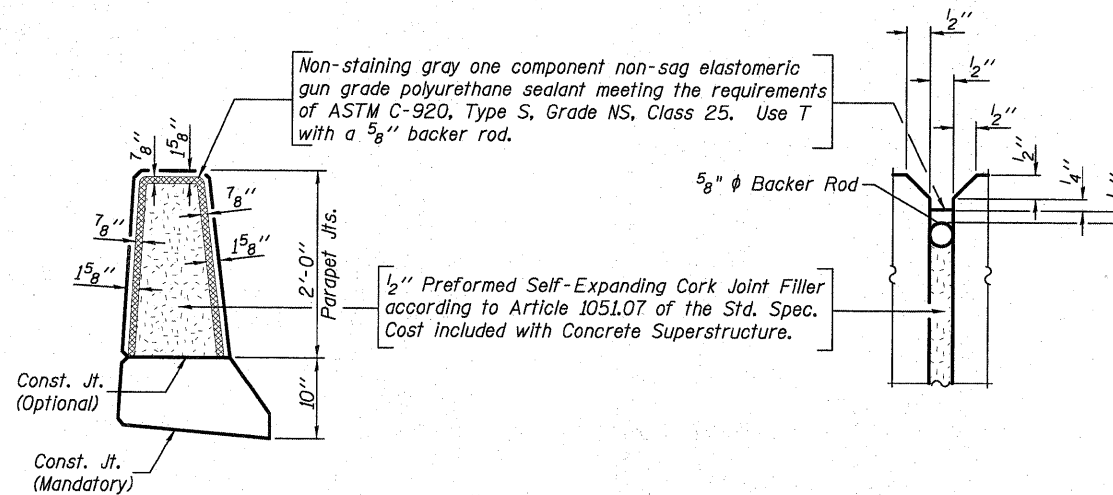
BAR s₁(E)

INSIDE ELEVATION OF PARAPET

MINIMUM BAR LAP
(Parapet)
#4 bar = 1'-4"
#8 bar = 3'-5"

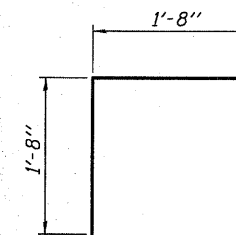


SECTION THRU PARAPET



PARAPET JOINT DETAILS

Notes:
The exterior surfaces of the floor drains shall be painted with the finish coat as specified in the special provisions for Cleaning and Painting New Metal Structures. The exterior surfaces of the drains shall be cleaned according to Society of Protective Coatings Spec. SSPC-SPI prior to painting.
Fiberglass pipe shall conform to ASTM D 2996, with short-time rupture strength hoop tensile stress of 30,000 p.s.i. minimum.
Drains shall be located clear of all diaphragms.

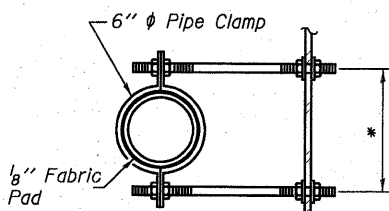


BAR v(E)

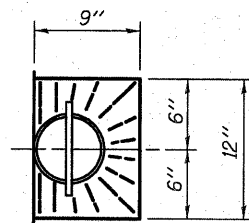
SUPERSTRUCTURE
BILL OF MATERIAL

Bar	No.	Size	Length	Shape
a(E)	190	#5	17'-1"	—
a ₁ (E)	134	#5	16'-8"	—
a ₂ (E)	190	#6	6'-0"	—
b(E)	76	#5	28'-5"	—
b ₁ (E)	96	#5	19'-8"	—
d(E)	122	#5	5'-7"	┘
d ₁ (E)	122	#5	7'-4"	┘
e(E)	56	#4	13'-6"	—
e ₁ (E)	6	#4	19'-1"	—
e ₂ (E)	6	#8	20'-7"	—
m(E)	8	#6	17'-3"	—
m ₁ (E)	12	#6	17'-3"	—
m ₂ (E)	24	#6	7'-8"	—
m ₃ (E)	8	#6	5'-8"	—
m ₄ (E)	4	#6	2'-2"	—
m ₅ (E)	4	#6	2'-8"	—
s(E)	84	#5	6'-11"	┘
s ₁ (E)	64	#4	9'-0"	┘
v(E)	72	#5	3'-4"	┘
Reinforcement Bars, Epoxy Coated		Pound	16,340	
Concrete Superstructure		Cu. Yds.	83.4	

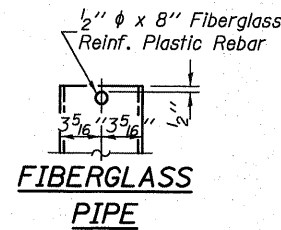
Bars indicated thus 1 x 3-#4 etc. indicates 1 line of bars with 3 lengths per line.



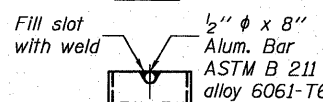
SECTION B-B
*Dimension as required by Pipe Clamp



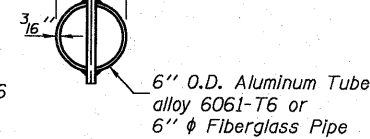
TOP PLAN



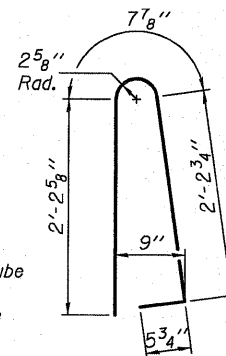
FIBERGLASS PIPE



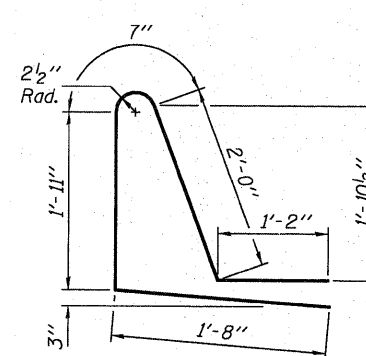
ALUMINUM TUBE



TOP PLAN
(Showing Aluminum Tube)



BAR d(E)



BAR d₁(E)

DESIGNED	B.G.H.
CHECKED	L.D.G.
DRAWN	K.H.L.
CHECKED	B.G.H.

S-I-D 10-1-08

SUPERSTRUCTURE DETAILS

SHEET NO. 11 21 SHEETS	F.A.S. RTE. 739	SECTION 1-2BR	COUNTY GREENE	TOTAL SHEETS 150	SHEET NO. 93
	S.N. 031-0040		CONTRACT NO. 76410		
FED. ROAD DIST. NO. ILLINOIS FED. AID PROJECT					