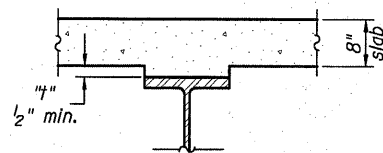
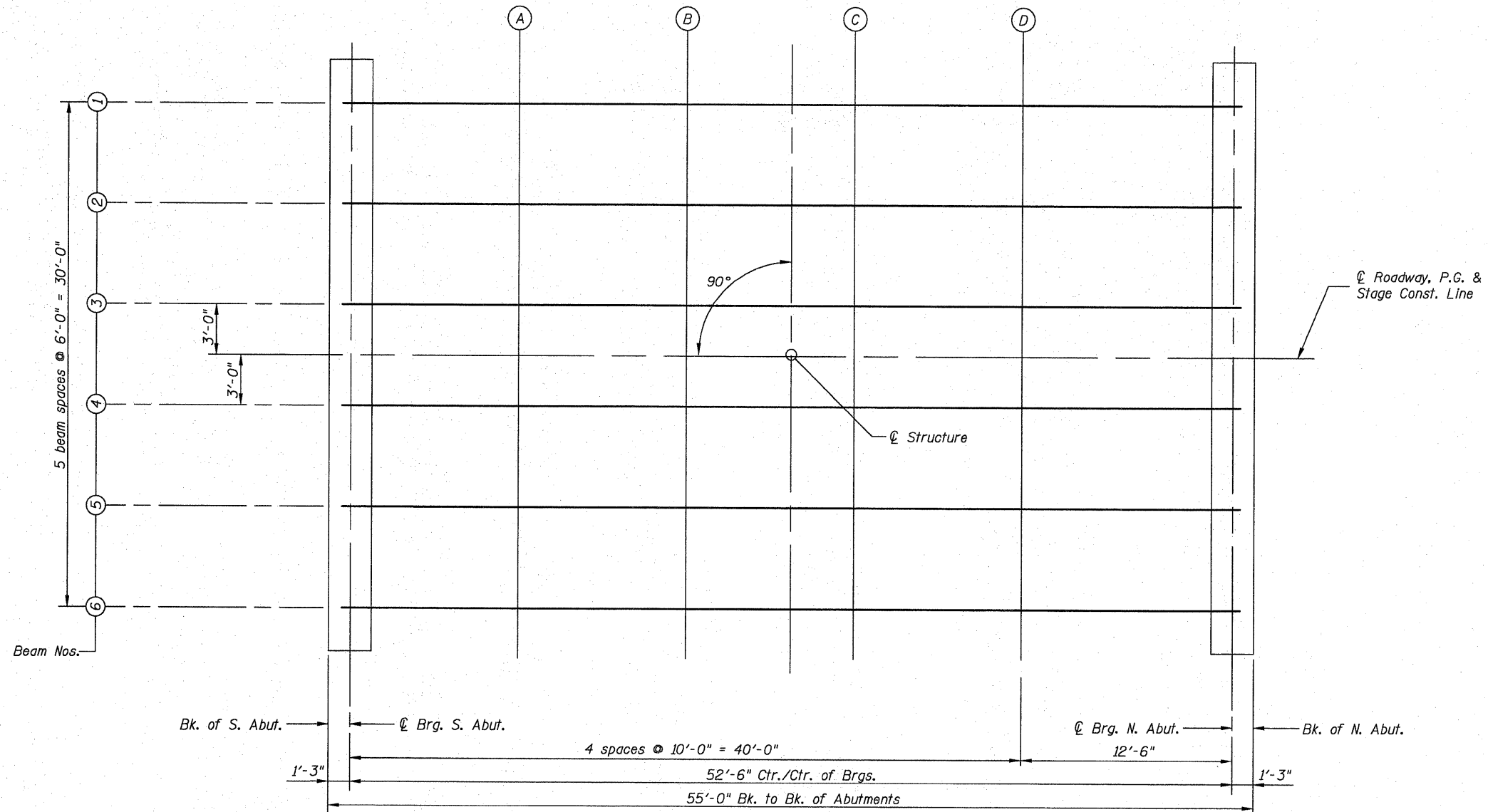
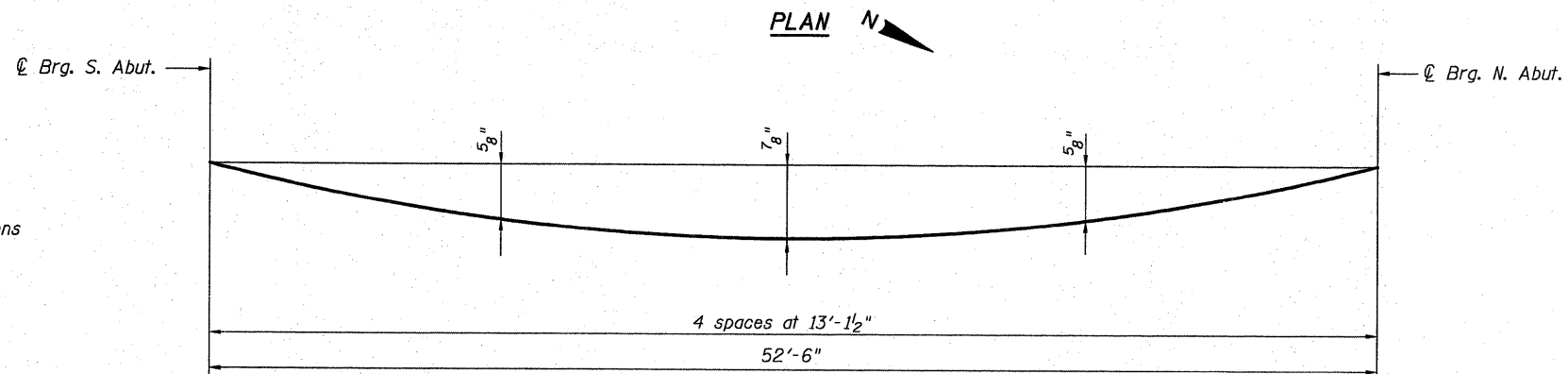


STATE OF ILLINOIS  
DEPARTMENT OF TRANSPORTATION



To determine "t": After all structural steel has been erected, elevations of the top flanges of the beams shall be taken at intervals shown on this sheet. These elevations subtracted from the "Theoretical Grade Elevations Adjusted for Dead Load Deflections" shown on sheets 6 and 7 of 21, minus slab thickness, equals the fillet heights "t" above top flanges of beams.

**FILLET HEIGHTS**



**DEAD LOAD DEFLECTION DIAGRAM**  
(Includes weight of concrete only.)

*Note:*  
The above deflections are not to be used in the field if the engineer is working from the "Theoretical Grade Elevations Adjusted for Dead Load Deflections" shown on sheets 6 and 7 of 21.

**TOP OF SLAB ELEVATIONS**

DESIGNED	B.G.H.
CHECKED	L.D.G.
DRAWN	K.H.L.
CHECKED	B.G.H.

SHEET NO. 5	F.A.S. RTE.	SECTION	COUNTY	TOTAL SHEETS	SHEET NO.
	739	1-2BR	GREENE	150	87
21 SHEETS	S.N. 031-0040		CONTRACT NO. 76410		
FED. ROAD DIST. NO.		ILLINOIS FED. AID PROJECT			