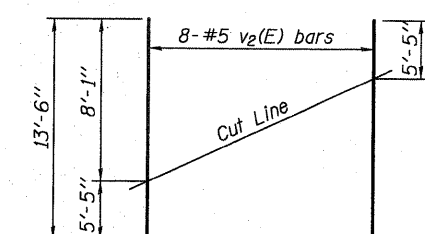
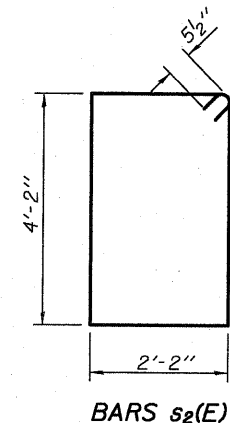
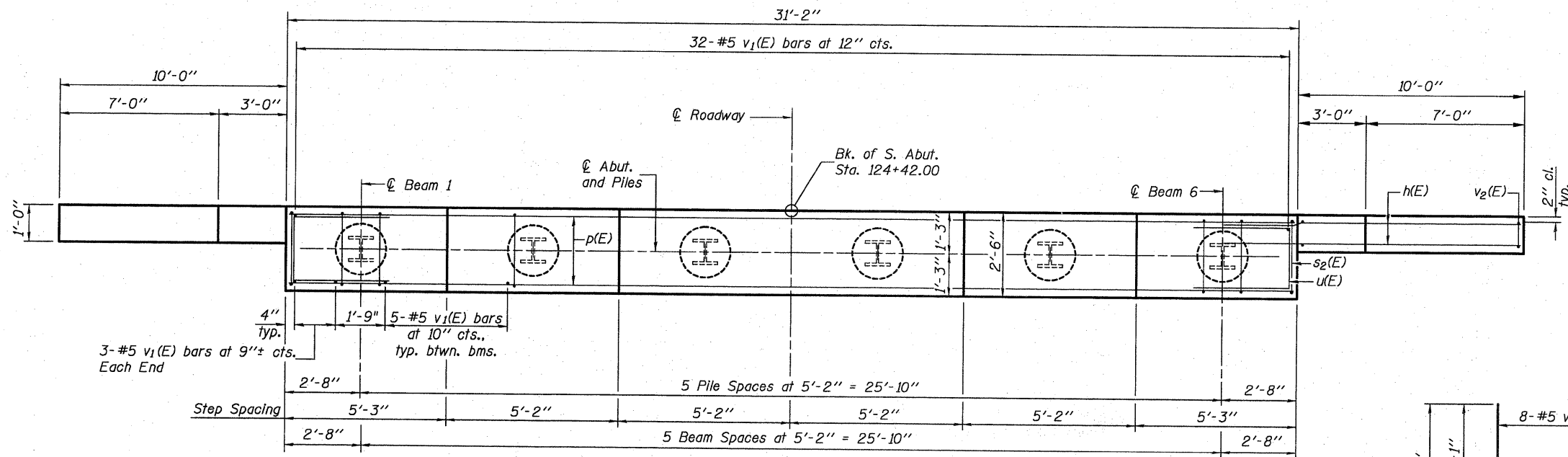
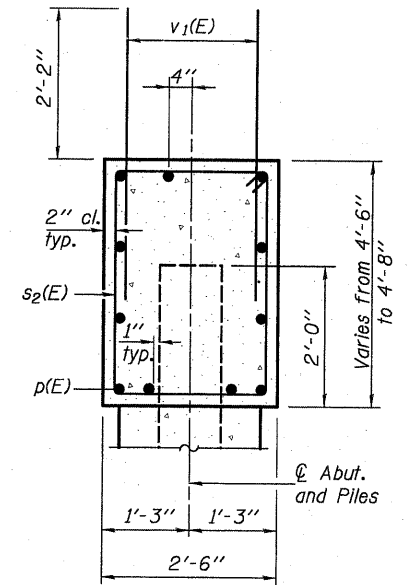
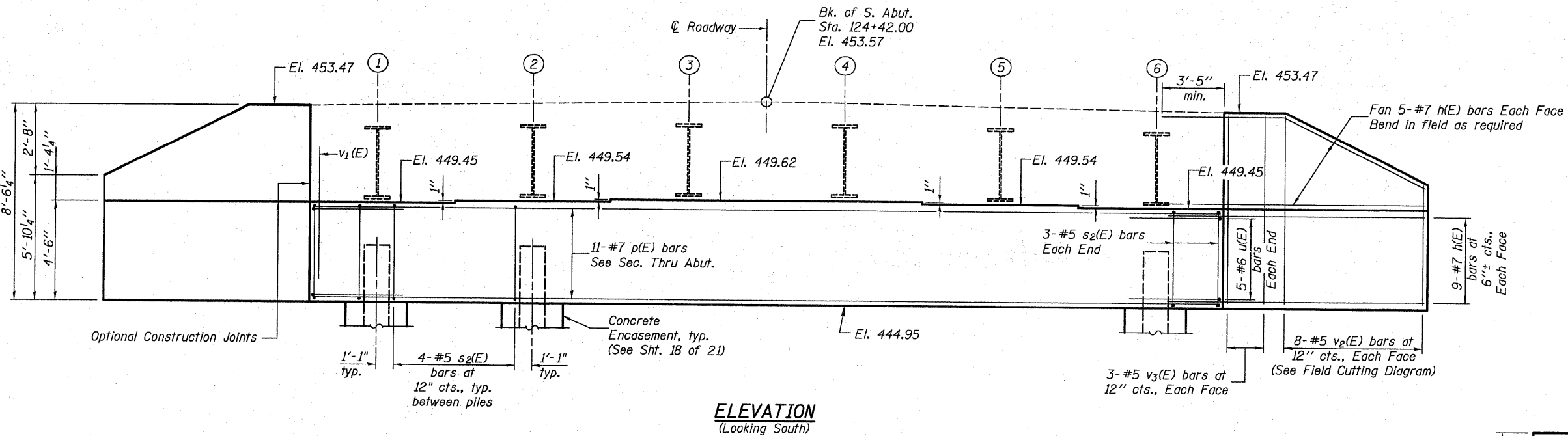


0120041.76410-16-SABT.DGN SEPT. 1, 2009

STATE OF ILLINOIS  
DEPARTMENT OF TRANSPORTATION

Notes:  
Pour steps monolithically with cap.



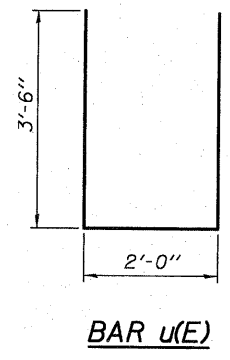
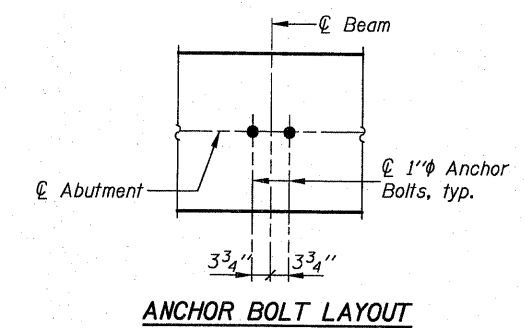
**BILL OF MATERIAL**

Bar No.	Size	Length	Shape
h(E)	56 #7	14'-0"	
p(E)	11 #7	30'-10"	
s2(E)	26 #5	13'-7"	□
u(E)	10 #6	9'-0"	□
v1(E)	62 #5	4'-4"	
v2(E)	16 #5	13'-6"	
v3(E)	12 #5	8'-1"	
Structure Excavation			Cu. Yd. 109
Concrete Structures			Cu. Yd. 18.9
Reinforcement Bars, Epoxy Coated			Pound 3,410
Furnishing Steel Piles HP 14x73			Foot 280
Driving Piles			Foot 280
Test Pile Steel HP 14x73			Each 1
Concrete Encasement			Cu. Yd. 3.3

For details of piles and Concrete Encasement, see sht. 18 of 21.

**PILE DATA**

Type: HP 14x73  
Nominal Required Bearing: 420 kips  
Factored Resistance Available: 210 kips  
Est. Length: 56 feet  
No. Production Piles: 5  
No. Test Piles: 1



**SOUTH ABUTMENT**

DESIGNED	B.G.H.
CHECKED	L.D.G.
DRAWN	K.H.L.
CHECKED	B.G.H.

AI-0 10-1-08

SHEET NO. 16 21 SHEETS	F.A.S. RTE. 739	SECTION 401-2BR	COUNTY GREENE	TOTAL SHEETS 150	SHEET NO. 49
	S.N. 031-0041		CONTRACT NO. 76410		
FED. ROAD DIST. NO.		ILLINOIS FED. AID PROJECT			

H.M. & G. NO. 6020.161