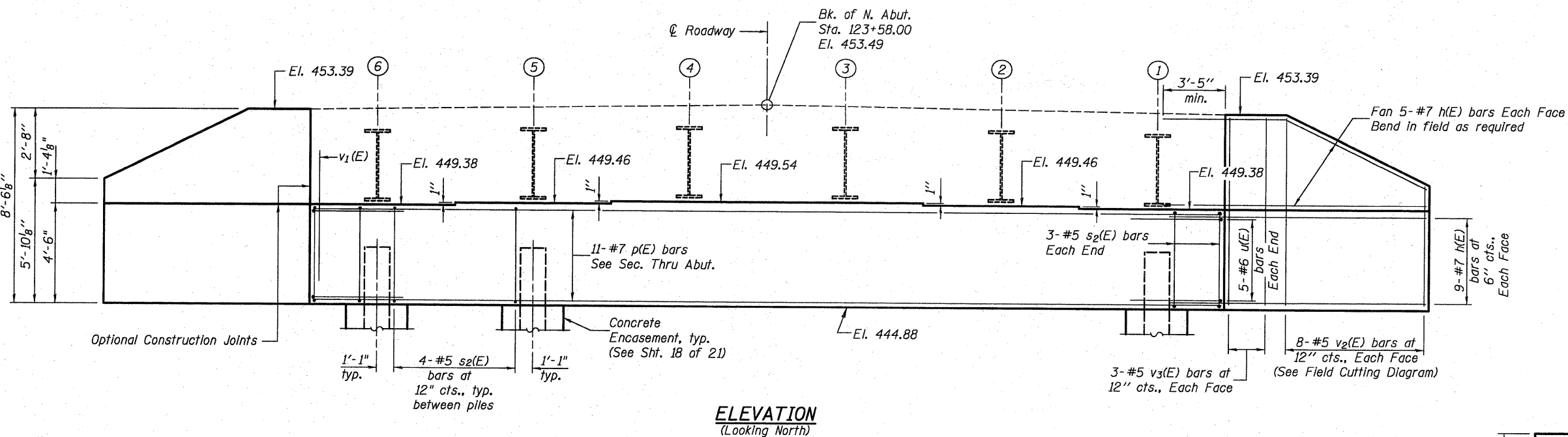


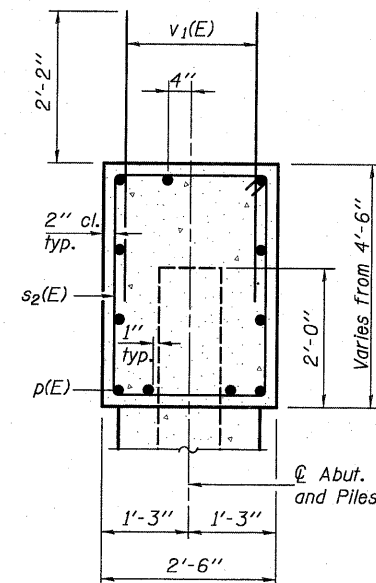
0130041-76410-15-MABT.DGN SEPT. 1, 2009

STATE OF ILLINOIS  
DEPARTMENT OF TRANSPORTATION

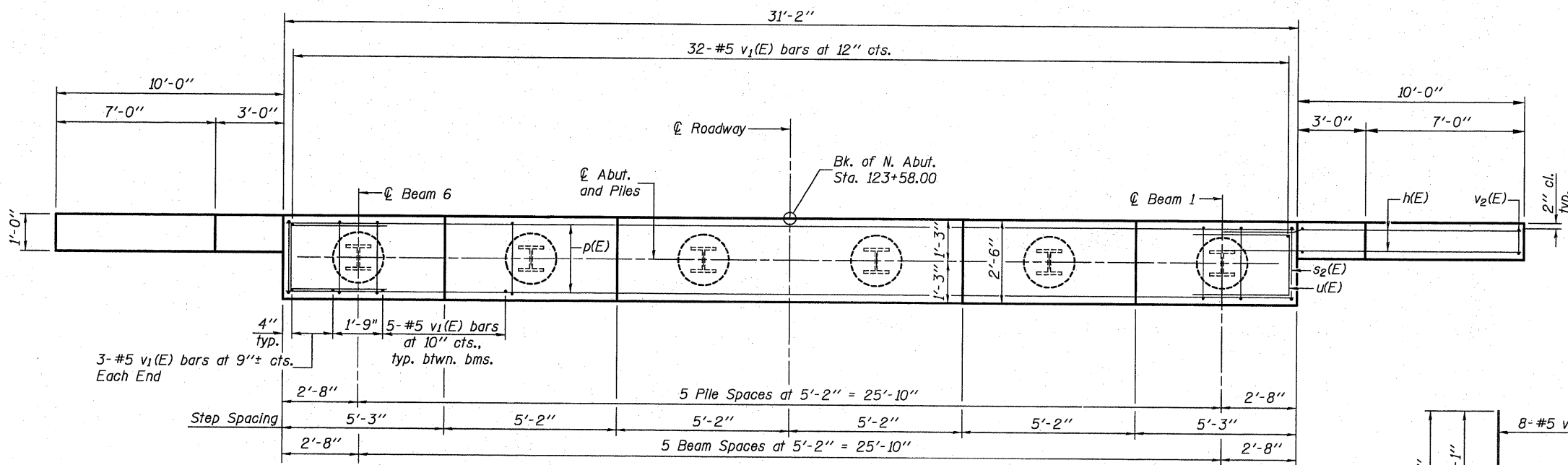
Notes:  
Pour steps monolithically with cap.



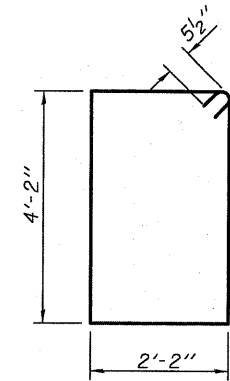
**ELEVATION**  
(Looking North)



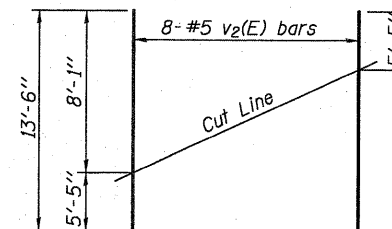
**SEC. THRU ABUT.**



**PLAN**



**BARS s2(E)**



**FIELD CUTTING DIAGRAM**

Order v2(E) full length. Cut as shown and use remainder of bars in opposite face.

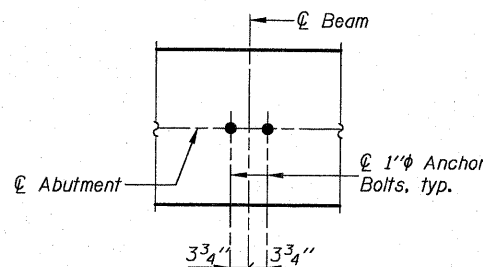
**BILL OF MATERIAL**

Bar	No.	Size	Length	Shape
h(E)	56	#7	14'-0"	—
p(E)	11	#7	30'-10"	—
s2(E)	26	#5	13'-7"	□
u(E)	10	#6	9'-0"	—
v1(E)	62	#5	4'-4"	—
v2(E)	16	#5	13'-6"	—
v3(E)	12	#5	8'-1"	—
Structure Excavation		Cu. Yd.	110	
Concrete Structures		Cu. Yd.	18.9	
Reinforcement Bars, Epoxy Coated		Pound	3,410	
Furnishing Steel Piles HP 14x73		Foot	300	
Driving Piles HP 14x73		Foot	300	
Test Pile Steel HP 14x73		Each	1	
Concrete Encasement		Cu. Yd.	3.3	

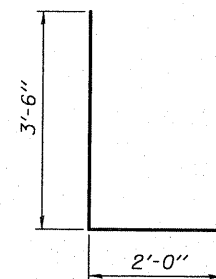
For details of piles and Concrete Encasement, see sht. 18 of 21.

**PILE DATA**

Type: HP 14x73  
Nominal Required Bearing: 420 kips  
Factored Resistance Available: 210 kips  
Est. Length: 60 feet  
No. Production Piles: 5  
No. Test Piles: 1



**ANCHOR BOLT LAYOUT**



**BAR u(E)**

DESIGNED	B.G.H.
CHECKED	L.D.G.
DRAWN	K.H.L.
CHECKED	B.G.H.

AI-0

10-1-08

SHEET NO. 15 21 SHEETS	F.A.S. RTE. 739	SECTION 401-2BR	COUNTY GREENE	TOTAL SHEETS 150	SHEET NO. 48
	S.N. 031-0041		CONTRACT NO. 76410		
FED. ROAD DIST. NO.		ILLINOIS	FED. AID PROJECT		

H.M. & G. NO. 6020.161