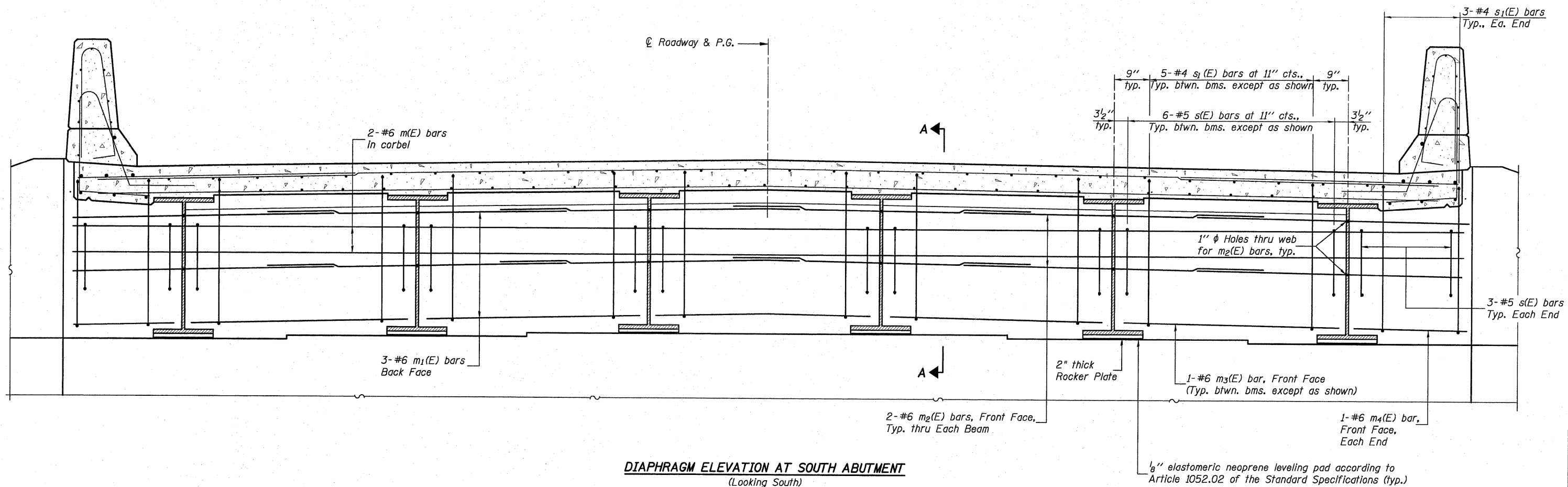


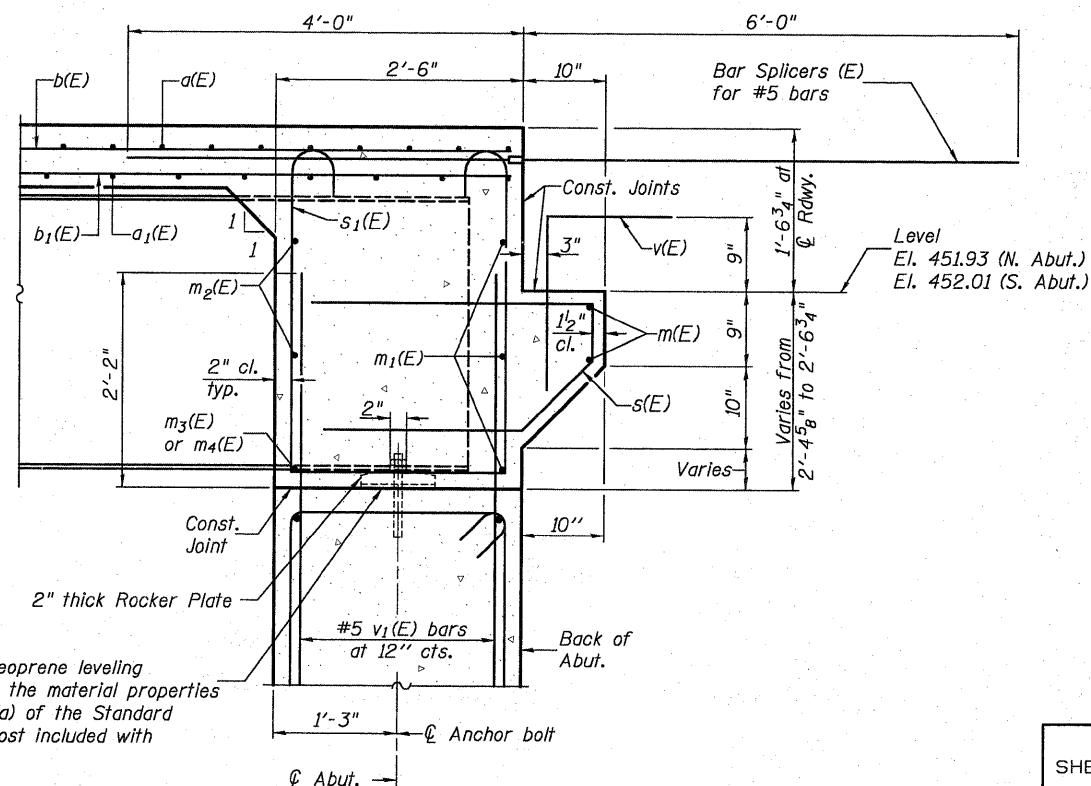
STATE OF ILLINOIS  
DEPARTMENT OF TRANSPORTATION



**DIAPHRAGM ELEVATION AT SOUTH ABUTMENT**  
(Looking South)

**Notes:**  
Reinforcement bars in diaphragm are billed with superstructure on sheet 9 of 21.  
Concrete in diaphragm is included with Concrete Superstructure on sheet 9 of 21.  
For details of bars s(E) & s1(E) see sheet 9 of 21.  
The s(E) and s1(E) bars shall be placed parallel to the beams. Spacing for these bars shall be at right angles to the beams.

**MIN. BAR LAP**  
#6 bar = 2'-9"



**SECTION A-A**

1/8" elastomeric neoprene leveling pad according to the material properties of Art. 1052.02(a) of the Standard Specifications. Cost included with Structural Steel.

DESIGNED	B.G.H.
CHECKED	L.D.G.
DRAWN	K.H.L.
CHECKED	B.G.H.

**INTEGRAL ABUTMENT DIAPHRAGM DETAILS**

SHEET NO. 10	F.A.S. RTE.	SECTION	COUNTY	TOTAL SHEETS	SHEET NO.
	739	401-2BR	GREENE	150	43
21 SHEETS	S.N. 031-0041		CONTRACT NO. 76410		
FED. ROAD DIST. NO.		ILLINOIS FED. AID PROJECT			