

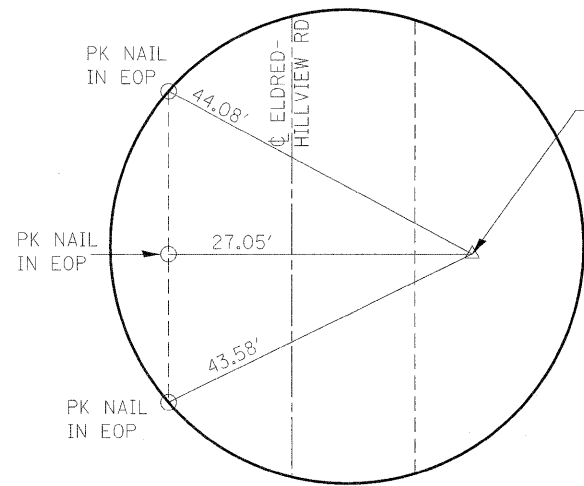


TBM 1: SOUTHWEST CORNER OF EAST PARAPET CURB ON THE STRUCTURE.

STATION ± 216+33, OFFSET 17' RT, ELEVATION 444.05

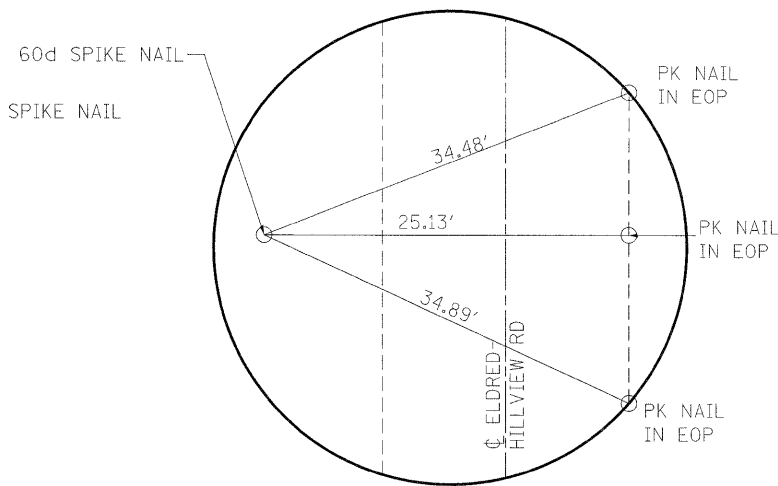
TBM 2: RR SPIKE SET IN POWER POLE AT SOUTH END OF PROJECT.

STATION ± 205+50, OFFSET 45' RT, ELEVATION 453.95



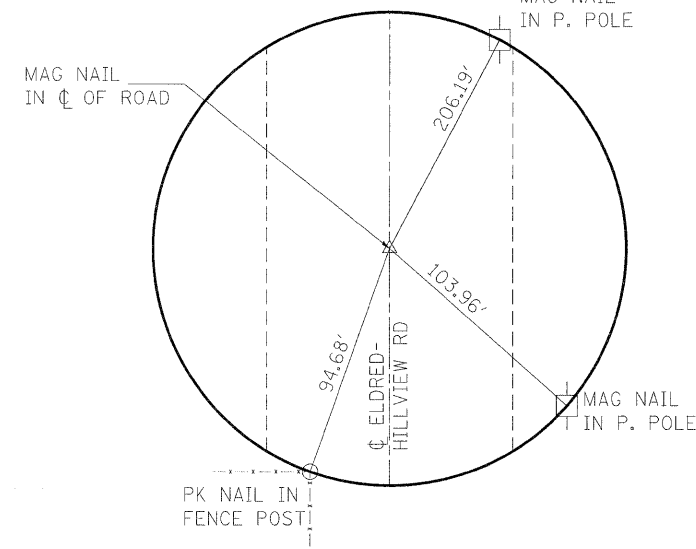
CONTROL POINT 55

STATION 206+44.80  
OFFSET 15.42' RT  
N. 97,073.436 E. 101,484.893



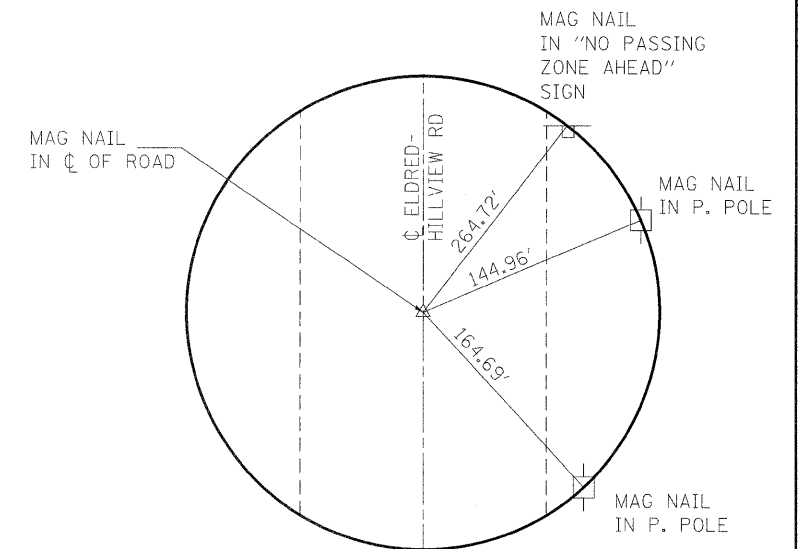
CONTROL POINT 30

STATION 213+74.98  
OFFSET 14.32' RT  
N. 97,714.526 E. 101,134.110



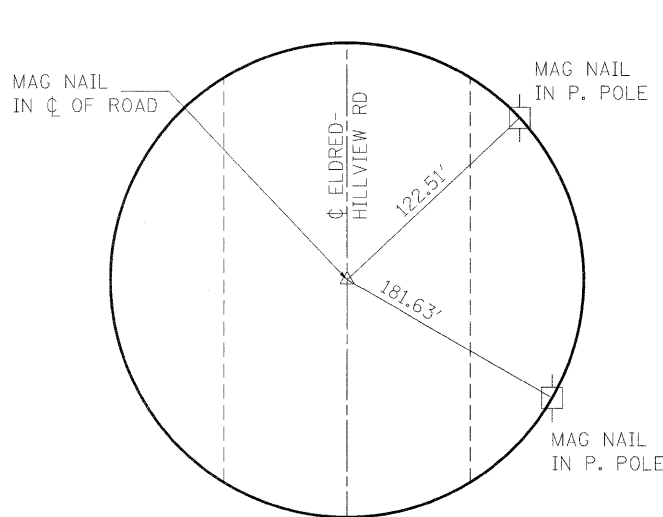
EXISTING ALIGNMENT STATION EQUATION  
STA 206+22.42 (BACK) = STA 206+39.10 (AHEAD)

N. 97,061.4797 E. 101,473.6046



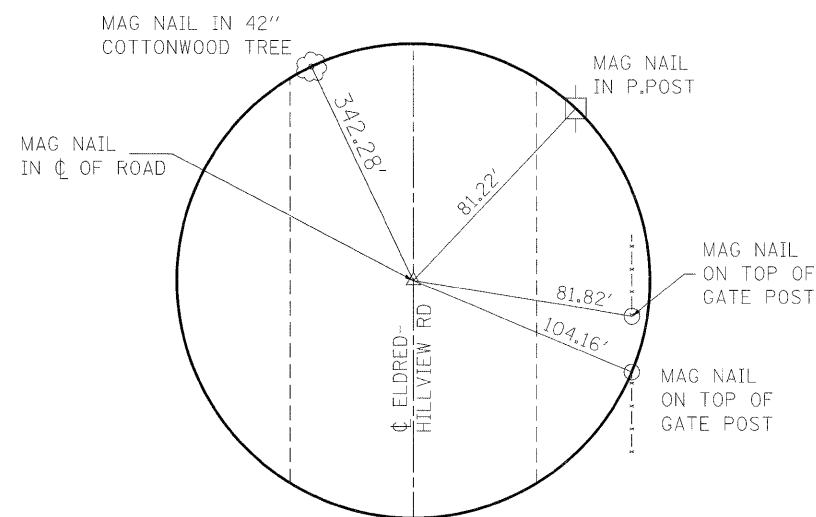
EXISTING ALIGNMENT - STA 210+00

N. 97,384.8724 E. 101,313.3985



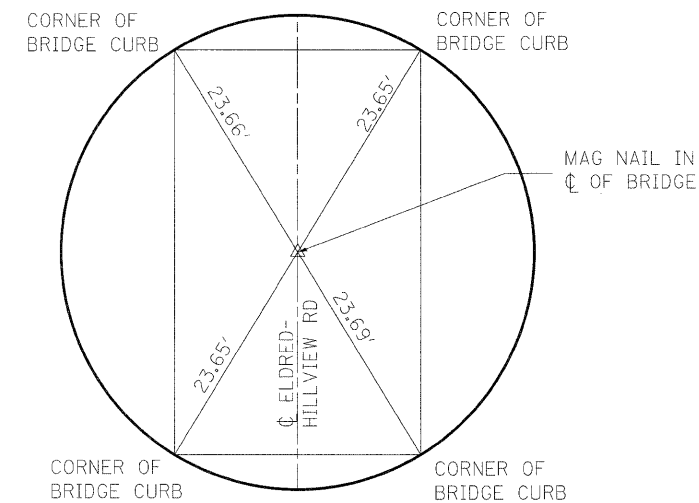
EXISTING ALIGNMENT - STA 222+00

N. 98,460.1597 E. 100,780.7098



EXISTING ALIGNMENT STATION EQUATION  
STA 231+28.46 (BACK) = STA 231+28.25 (AHEAD)

N. 99,292.1274 E. 100,368.5597



EXISTING ALIGNMENT - STA 216+50

N. 97,967.3163 E. 101,024.8605

NOTES:  
NOT TO SCALE.  
ALL TIES ARE PULLED DIRECT, UNLESS OTHERWISE NOTED.

FILE NAME =	USER NAME = thorp1	DESIGNED -	REVISED -
ct:\pwwork\pwwork\thorp1\dms52692\087610-sht-ATB.dgn		DRAWN -	REVISED -
PLOT SCALE = 50.000' / IN.		CHECKED -	REVISED -
PLOT DATE = 3/25/2010		DATE -	REVISED -

STATE OF ILLINOIS  
DEPARTMENT OF TRANSPORTATION

TIES AND BENCHMARKS  
SN 031-0011(E) 0040(P), SECTION 1-2BR

SCALE: SHEET NO. 1 OF 1 SHEETS STA. TO STA.

F.A.S. RTE.	SECTION	COUNTY	TOTAL SHEETS	SHEET NO.
739	1BR, 1-2BR, 401-2BR	GREENE	150	8
FED. ROAD DIST. NO. ILLINOIS FED. AID PROJECT			CONTRACT NO. 76410	