

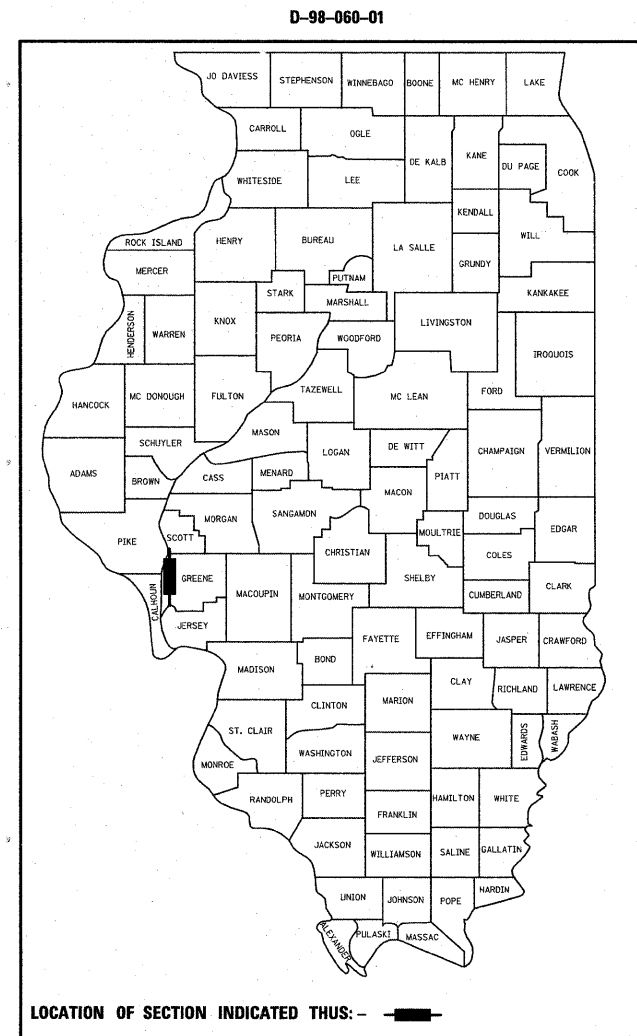
F.A.S. RTE.	SECTION	COUNTY	TOTAL SHEETS	SHEET NO.
739	1BR, 1-2BR, 401-2BR	GREENE	150	1
		ILLINOIS	CONTRACT NO. 76410	

STATE OF ILLINOIS  
DEPARTMENT OF TRANSPORTATION  
DIVISION OF HIGHWAYS

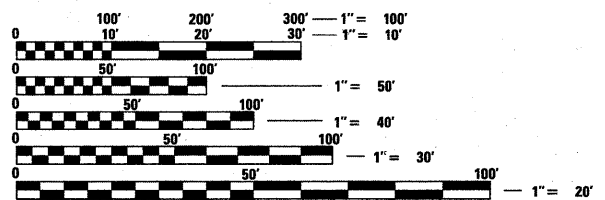
**PROPOSED  
HIGHWAY PLANS**

FAS ROUTE 739 (ELDRED-HILLVIEW RD)  
SECTION 1BR, 1-2BR, 401-2BR  
PROJECT - -  
BRIDGE REPLACEMENT, SCOUR MITIGATION  
GREENE COUNTY

C-98-030-10



FOR INDEX OF SHEETS, SEE SHEET NO. 2



FULL SIZE PLANS HAVE BEEN PREPARED USING STANDARD ENGINEERING SCALES. REDUCED SIZED PLANS WILL NOT CONFORM TO STANDARD SCALES. IN MAKING MEASUREMENTS ON REDUCED PLANS, THE ABOVE SCALES MAY BE USED.

J.U.L.I.E.  
JOINT UTILITY LOCATION INFORMATION FOR EXCAVATION  
1-800-892-0123  
OR 811

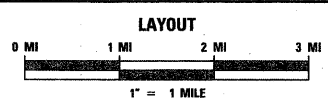
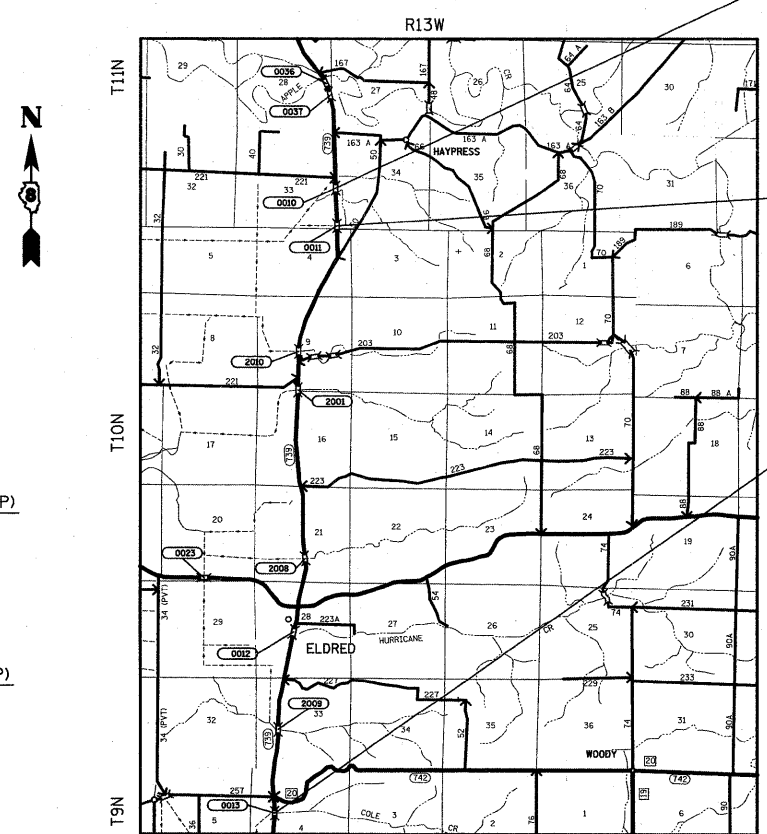
PROJECT ENGINEER: PATTI LeBEAU (618) 346-3179  
PROJECT MANAGER: REBECCA THARP (618) 346-3323

CONTRACT NO. 76410

SEC 1BR SN 031-0039 (P)  
& SEC 1-2BR SN 031-0040 (P)  
ADT = 750 (2001)  
ADT = 975 (2028)  
SU = 5.5%  
MU = 4.1%

SEC 401-2BR SN 031-0041 (P)  
ADT = 650 (2007)  
ADT = 850 (2030)  
SU = 8.6%  
MU = 1.7%

DESIGN DESIGNATION  
N/A



SEC 1BR SN 031-0039 (P) LATITUDE 39.3525 LONGITUDE -90.5440	SEC 1-2BR SN 031-0040 (P) LATITUDE 39.3469 LONGITUDE -90.5437	SEC 401-2BR SN 031-0041 (P) LATITUDE 39.2565 LONGITUDE -90.5552
---	---	---

PROPOSED SINGLE SPAN W33 BEAM BRIDGE OVER UNNAMED STREAM  
70'-0" BACK TO BACK ABUTS, 0° SKEW  
STA 237+00  
SN 031-0010 (E), SN 031-0039 (P)  
BEGIN STA 234+37.5  
END STA 239+62.5

PROPOSED SINGLE SPAN W30 BEAM BRIDGE OVER UNNAMED STREAM  
55'-0" BACK TO BACK ABUTS, 0° SKEW  
STA 216+50  
SN 031-0011 (E), SN 031-0040 (P)  
BEGIN STA 214+57.5  
END STA 219+17.5

PROPOSED SINGLE SPAN W36 BEAM BRIDGE OVER COLE CREEK  
84'-0" BACK TO BACK ABUTS, 0° SKEW  
STA 124+00  
SN 031-0013 (E), SN 031-0041 (P)  
BEGIN STA 120+77.5  
END STA 127+60

SEC 1BR  
GROSS LENGTH = 0.013 MI  
NET LENGTH = 0.013 MI

SEC 1-2BR  
GROSS LENGTH = 0.010 MI  
NET LENGTH = 0.010 MI

SEC 401-2BR  
GROSS LENGTH = 0.016 MI  
NET LENGTH = 0.016 MI

TOTAL  
GROSS LENGTH = 0.039 MI  
NET LENGTH = 0.039 MI

STATE OF ILLINOIS  
DEPARTMENT OF TRANSPORTATION  
DIVISION OF HIGHWAYS

SUBMITTED March 20 10  
MyL Kramer  
DEPUTY DIRECTOR OF HIGHWAYS, REGION 5 ENGINEER

May 7 20 10  
Scott E. Stitt P.E./e  
Acting ENGINEER OF DESIGN AND ENVIRONMENT

May 7 20 10  
Christine M. Reed  
DIRECTOR OF HIGHWAYS, CHIEF ENGINEER

**PRINTED BY THE AUTHORITY  
OF THE STATE OF ILLINOIS**