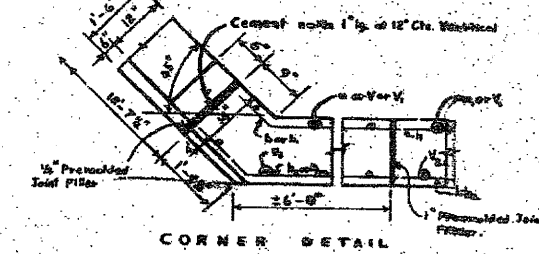
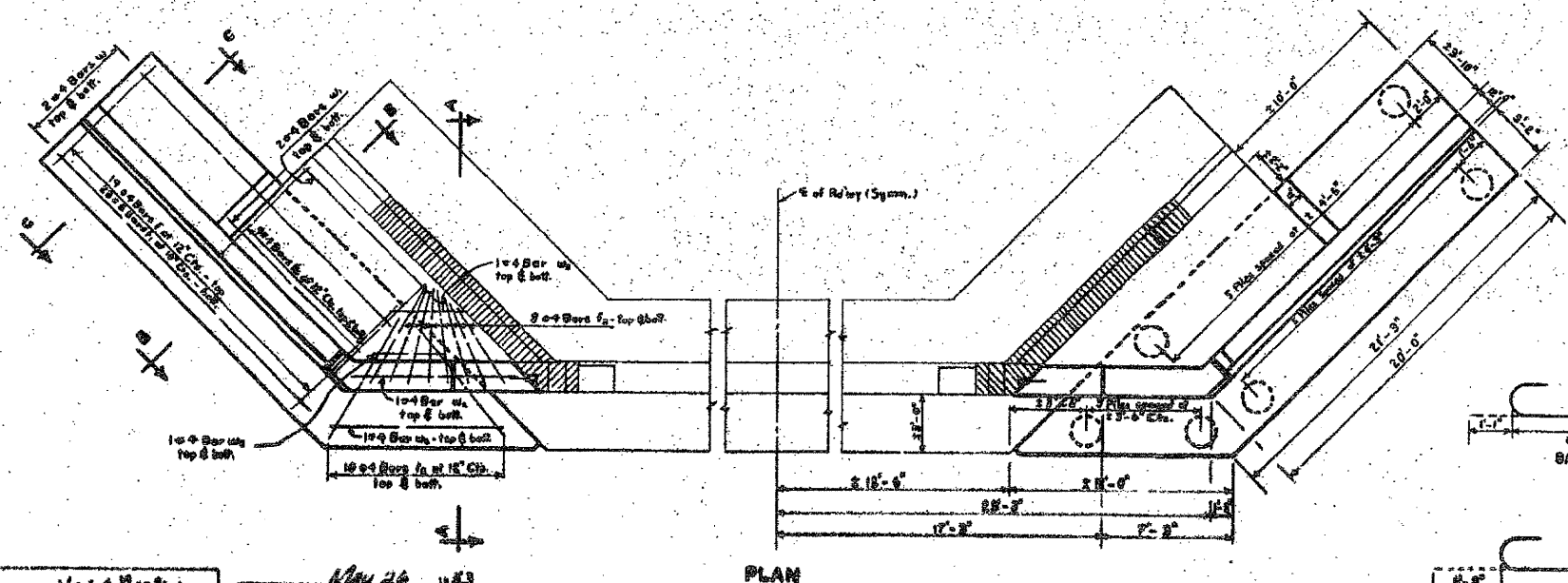
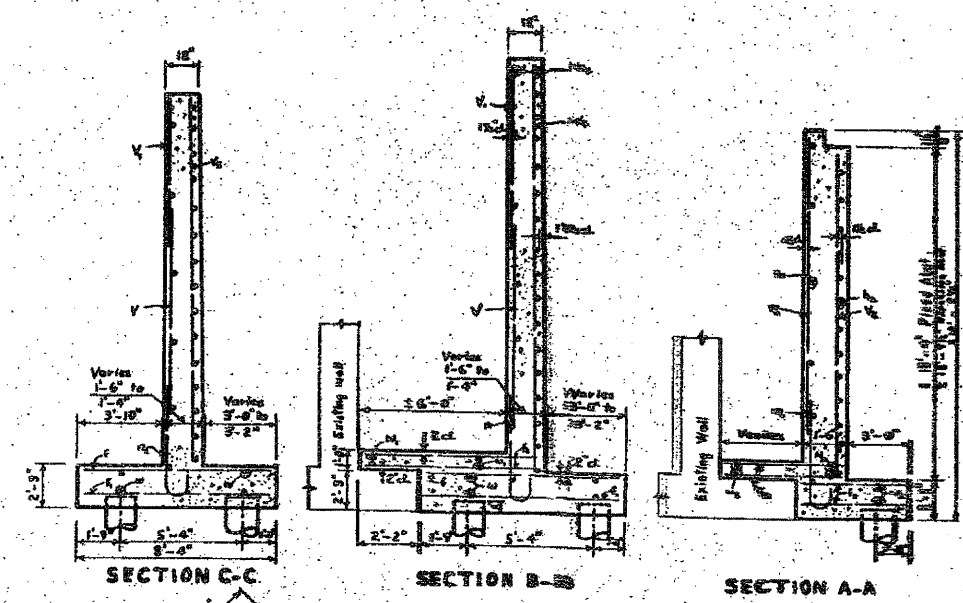
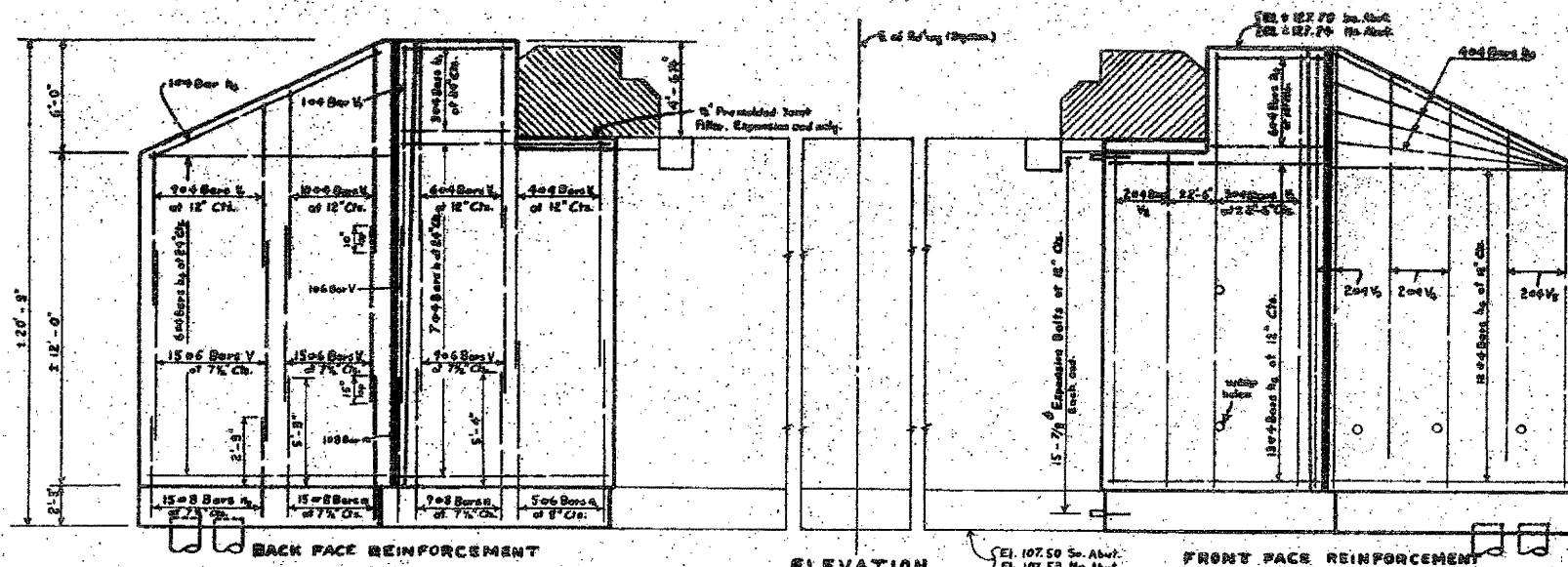


STATE OF ILLINOIS
DEPARTMENT OF PUBLIC WORKS & BUILDINGS
DIVISION OF HIGHWAYS

Project No.	21BR-21-1
Section	21-1
Sheet No.	77
Scale	AS SHOWN



BILL OF MATERIAL - BARRELS

BAR	SIZE	LENGTH	QTY
1	10#	12'-0"	1
2	12#	12'-0"	1
3	10#	12'-0"	1
4	12#	12'-0"	1
5	10#	12'-0"	1
6	12#	12'-0"	1
7	10#	12'-0"	1
8	12#	12'-0"	1
9	10#	12'-0"	1
10	12#	12'-0"	1
11	10#	12'-0"	1
12	12#	12'-0"	1
13	10#	12'-0"	1
14	12#	12'-0"	1
15	10#	12'-0"	1
16	12#	12'-0"	1
17	10#	12'-0"	1
18	12#	12'-0"	1
19	10#	12'-0"	1
20	12#	12'-0"	1

DESIGNED: *Vedat Yordak*
 DRAWN: *W. S. ...*
 CHECKED: *V. Y.*
 DATE: *May 26, 1983*

FOR INFORMATION ONLY

ABUTMENTS
 21BR-21-1-1
 RANDOLPH CO.
 STA. 888+55

FILE NAME = #FILE#	USER NAME = #USER#	DESIGNED	REVISED	STATE OF ILLINOIS DEPARTMENT OF TRANSPORTATION	EXISTING STRUCTURE PLANS	F.A.P. RTE.	SECTION	COUNTY	TOTAL SHEETS	SHEET NO.
		DRAWN	REVISED			682	21BR-21-1	RANDOLPH	77	63
		CHECKED	REVISED							CONTRACT NO. 76126
		DATE	REVISED			SCALE:	SHEET NO. OF SHEETS	STA. TO STA.	FED. ROAD DIST. NO.	ILLINOIS FED. AID PROJECT