

STATE OF ILLINOIS
 DEPARTMENT OF TRANSPORTATION
 DIVISION OF HIGHWAYS

STATE OF ILLINOIS
 DEPARTMENT OF TRANSPORTATION
 DIVISION OF HIGHWAYS

GENERAL NOTES

1. This structure shall be constructed in accordance with the Standard Specifications for Highway Bridges, 1954 Edition, as amended, and the Standard Specifications for Highway Structures, 1954 Edition, as amended, and the Standard Specifications for Highway Structures, 1954 Edition, as amended, and the Standard Specifications for Highway Structures, 1954 Edition, as amended.

2. The contractor shall be responsible for obtaining all necessary permits and for obtaining all necessary easements and rights-of-way for the construction of this structure.

3. All materials and workmanship shall conform to the applicable provisions of Section 27 of the Standard Specifications.

4. For Expansion Bolts, see Special Provisions.

5. All rollers, bearing plates, lead plates, sections and anchor bolts shall be fabricated and set in accordance with Article 51.19 of the Standard Specifications and are included for payment as Structural Steel.

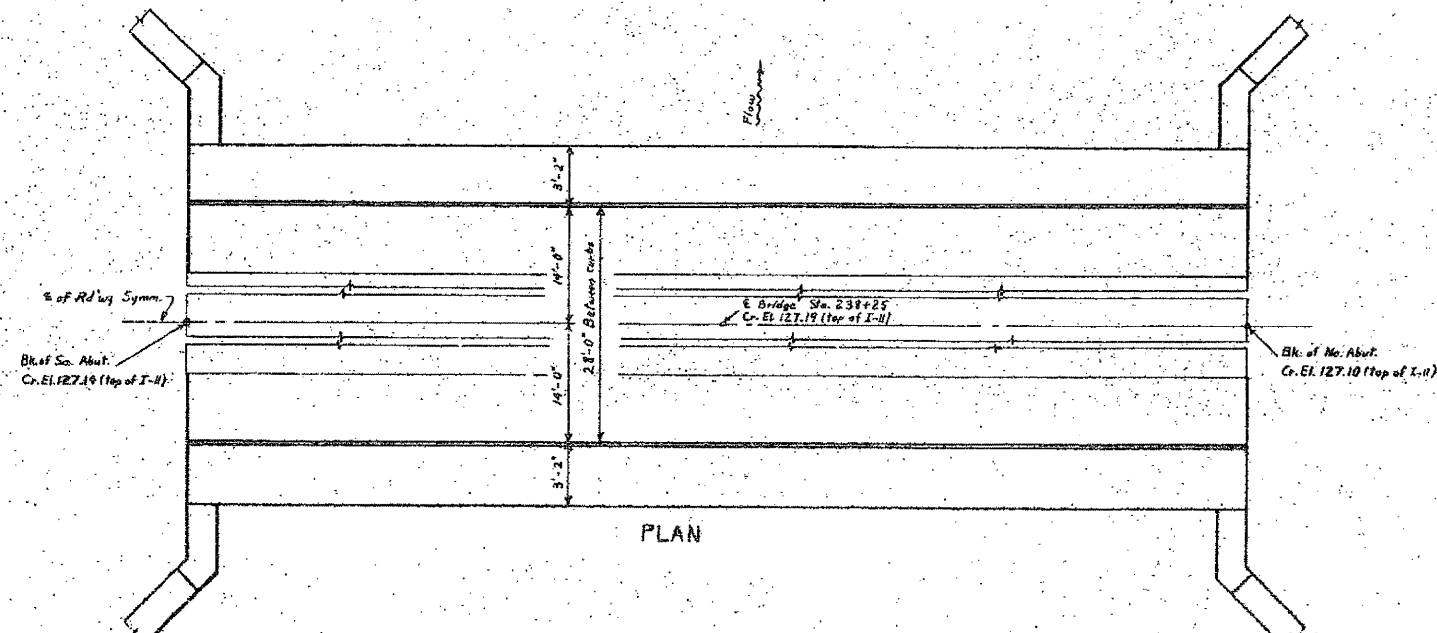
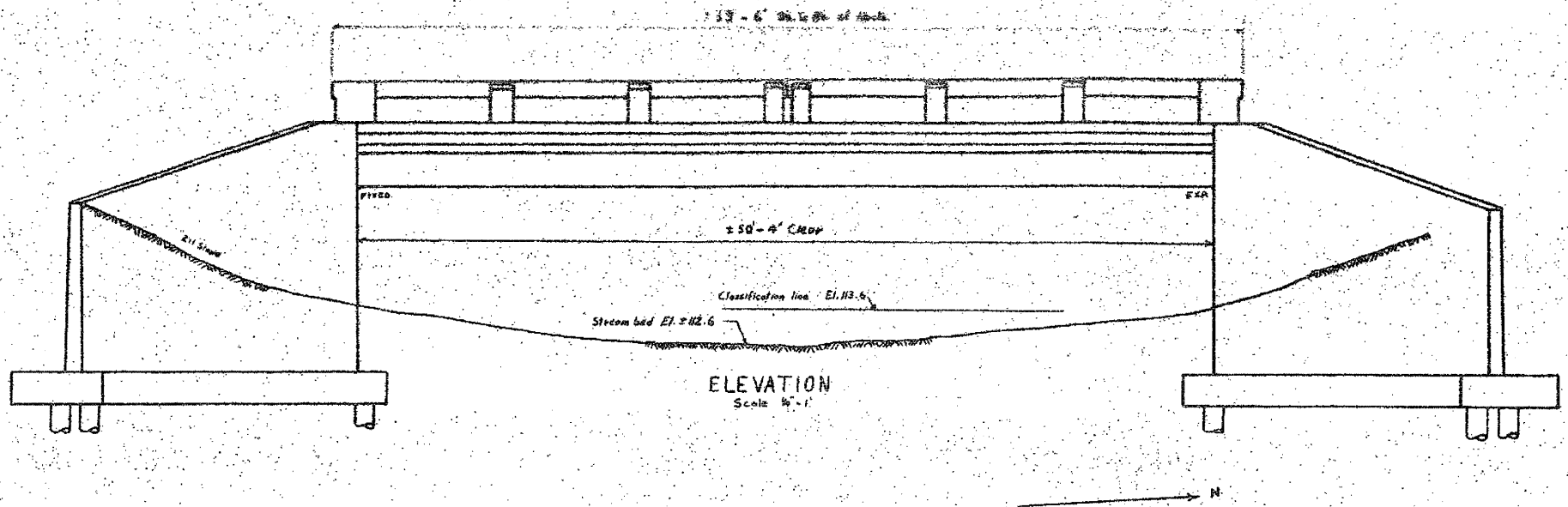
6. Except as otherwise provided, all structural steel shall receive one shop coat of red lead paint and two field coats of aluminum paint. See Article 57.1 & 57.5 inclusive of the Standard Specifications.

7. All paint shall be furnished and applied by the contractor.

8. The following surfaces of the bridge shall be waterproofed: deck of abutments and wing walls from top of footing to top of curb. Waterproofing shall be done in accordance with Article 51.20 of the Standard Specifications.

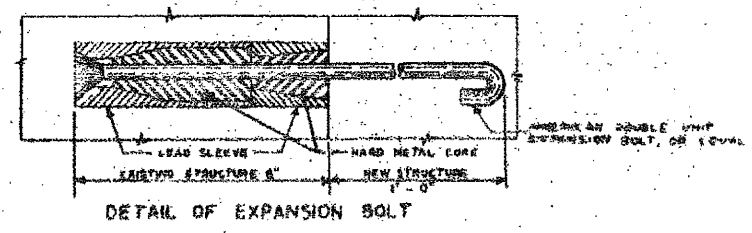
Station 238+25
 Built 195- By
 State of Illinois
 SBI RTE.13 SEC 2B-Y
 Loading H-20

Lettering for Name Plates
 See standard 2143



TOTAL BILL OF MATERIAL

ITEM	QUANTITY	UNIT	AMOUNT
Masonry Removal	15	Cu. Yds.	2.5
Handrail Concrete	2.5	Cu. Yds.	2.5
Class 2 Concrete	58.0	Cu. Yds.	169.5
Reinforcement Bars	9000	Lbs.	10800
Structural Steel	1400	Lbs.	1400
Expansion Bolts 1/2"	50	Each	50
Untreated Timber Piles (25") 1/2"	1250	Lin. Ft.	1250
Lead Plates	2	Each	2
Class A Excavation for Structure	280	Cu. Yds.	280
Class B Excavation for Structure	340	Cu. Yds.	340
Bituminous Concrete Surface Course (Sub-Class I) 1 1/2"	4	Sq. Yds.	4
Bituminous Material (Prime Coat)	4	Sq. Yds.	4
Name Plates	1	Each	1



WATERWAY INFORMATION

Drainage Area 47800 Acres
 Character 1st, 2nd, 3rd, 4th, 5th, 6th, 7th, 8th, 9th, 10th, 11th, 12th, 13th, 14th, 15th, 16th, 17th, 18th, 19th, 20th, 21st, 22nd, 23rd, 24th, 25th, 26th, 27th, 28th, 29th, 30th, 31st, 32nd, 33rd, 34th, 35th, 36th, 37th, 38th, 39th, 40th, 41st, 42nd, 43rd, 44th, 45th, 46th, 47th, 48th, 49th, 50th, 51st, 52nd, 53rd, 54th, 55th, 56th, 57th, 58th, 59th, 60th, 61st, 62nd, 63rd, 64th, 65th, 66th, 67th, 68th, 69th, 70th, 71st, 72nd, 73rd, 74th, 75th, 76th, 77th, 78th, 79th, 80th, 81st, 82nd, 83rd, 84th, 85th, 86th, 87th, 88th, 89th, 90th, 91st, 92nd, 93rd, 94th, 95th, 96th, 97th, 98th, 99th, 100th

DESIGNED: Vedat Yerba
 CHECKED: H. J. ...
 DRAWN: V. Y.
 DATE: 4/77

FOR INFORMATION ONLY

FILE NAME	USER NAME	DESIGNED	REVISED	STATE OF ILLINOIS DEPARTMENT OF TRANSPORTATION	EXISTING STRUCTURE PLANS	F.A.P. RTE.	SECTION	COUNTY	TOTAL SHEETS	SHEET NO.
#FILE#	#USER#	DRAWN	REVISED	STATE OF ILLINOIS DEPARTMENT OF TRANSPORTATION	EXISTING STRUCTURE PLANS	682	21BR 21-1-1	RANDOLPH	76	67
PLOT SCALE	#SCALE#	CHECKED	REVISED	SCALE:	SHEET NO. OF SHEETS	STA.	TO STA.	FED. ROAD DIST. NO.	ILLINOIS FED. AID PROJECT	CONTRACT NO. 76126
PLOT DATE	#DATE#	DATE	REVISED							