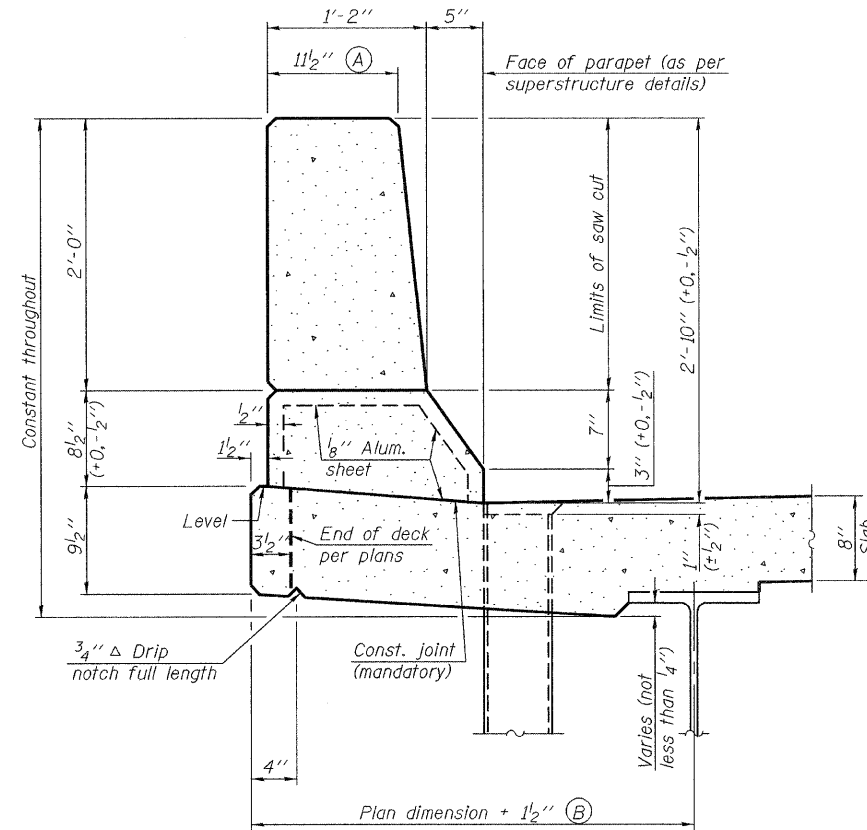
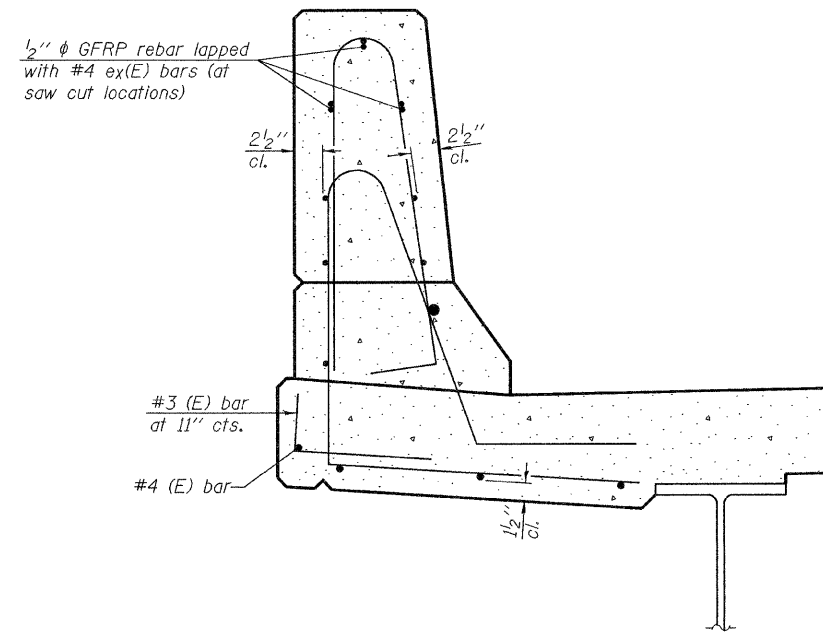


STATE OF ILLINOIS  
DEPARTMENT OF TRANSPORTATION



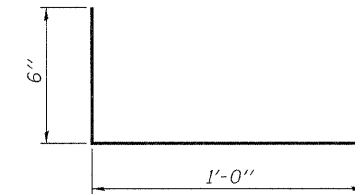
**SECTION**  
(Showing dimensions)



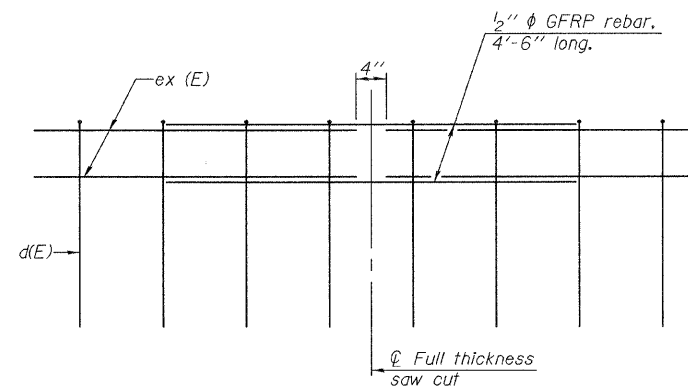
**SECTION**  
(Showing reinforcement clearances for slip forming and additional reinforcement bars)

**GENERAL NOTES**

All dimensions shall remain the same as shown on contract plans, except dimensions A and B which are to be revised as shown to provide additional clearance. Additional concrete needed to revise dimension A and B = 0.0165 cu. yds./ft. of parapet.  
Place aluminum sheet in curb portion at and near piers. Full thickness saw cut at all joint locations in lieu of cork joint filler.



**#3 (E) BAR**



**GFRP REBAR STIFFENING DETAIL**

(Place as shown in parapet section at each parapet joint location.)

**CONCRETE PARAPET SLIPFORMING OPTION  
STRUCTURE NO. 079-0050**

DESIGNED	Ray Ahanchi
CHECKED	Jay D. Edwards
DRAWN	h.t. duong
CHECKED	GRA/JDE

EXAMINED	Thomas J. Domagalaki ENGINEER OF BRIDGE DESIGN
PASSED	Ralph E. Anderson ENGINEER OF BRIDGES AND STRUCTURES

March 2, 2010

SFP-34

10-1-08

SHEET NO. 20 21 SHEETS	F.A.P. RTE.	SECTION	COUNTY	TOTAL SHEETS	SHEET NO.
	682	21BR, 21-I-1	RANDOLPH	77	59
			CONTRACT NO. 76126		
FED. ROAD DIST. NO.		ILLINOIS FED. AID PROJECT			