

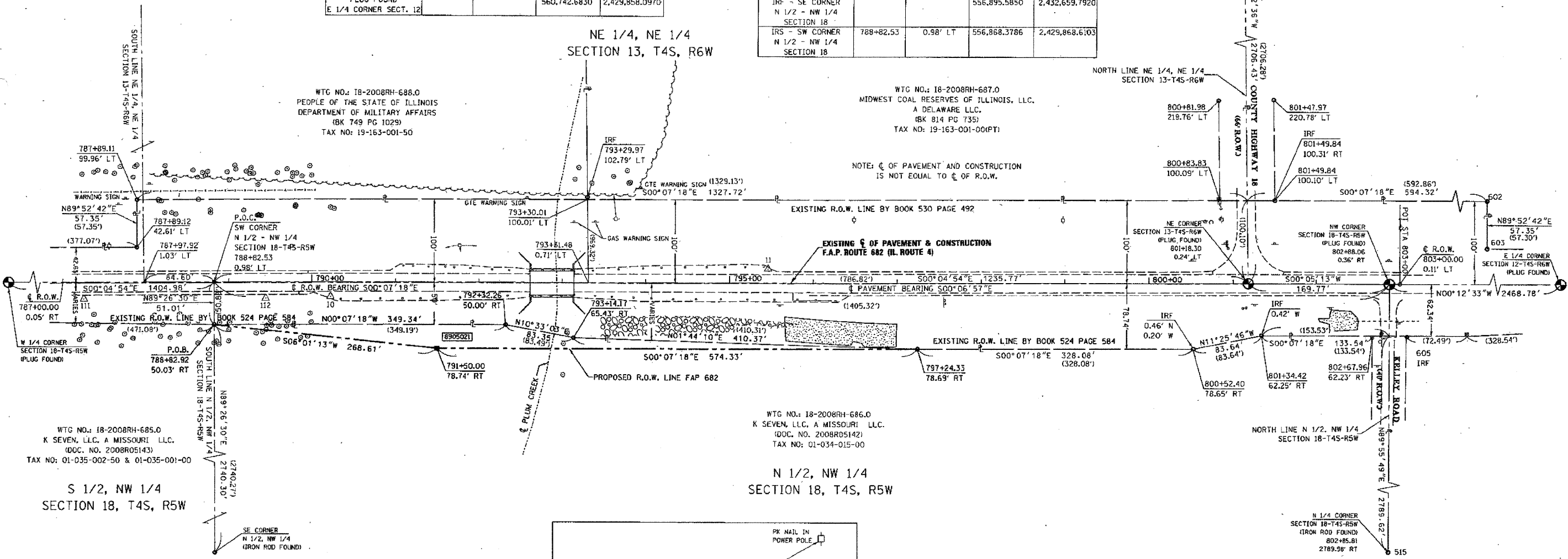
**PART OF THE N 1/2 OF NW 1/4 OF SECTION 18, T4S, R5W, OF THE 3RD PM, RANDOLPH COUNTY, ILLINOIS**

COORDINATES AND BEARINGS SHOWN HEREON ARE BASED ON SURVEY CONTROL DATA AS PROVIDED BY THE ILLINOIS DEPARTMENT OF TRANSPORTATION.

POINT*/DESC.	STATION	OFFSET	NORTH	EAST
10	790+22.48	16.83' RT	557,008.3720	2,429,886.1330
11	795+45.96	17.31' LT	557,531.7820	2,429,850.9340
110	783+35.03	18.89' RT	556,320.9206	2,429,889.5824
111	787+25.65	18.88' RT	556,711.5450	2,429,888.7894
112	789+44.78	18.89' RT	556,930.6737	2,429,888.3519
300	792+87.98		557,273.8333	2,429,868.7668
301	782+00		556,185.8556	2,429,870.9683
302	803+00		558,285.8513	2,429,866.7190

POINT*/DESCRIPTION	STATION	OFFSET	NORTH	EAST
PLUG FOUND NW SECT. 18	802+88.06	0.36' RT	558,273.9160	2,429,867.1060
PLUG FOUND E 1/4 CORNER SECT. 13			555,463.3990	2,429,870.6140
PLUG FOUND NE SECT. 13	801+18.30	0.24' LT	558,104.1510	2,429,866.8480
IRF - N 1/4 CORNER SECTION 13	800+78.59	2706.38' LT	558,058.9610	2,427,160.7950
IRF - N 1/4 CORNER SECTION 18	802+85.81	2789.98' RT	558,277.3080	2,432,656.7230
(602) IRF - EX. R.O.W.			558,696.7990	2,429,765.7370
(603) IRF - EX. R.O.W.			558,696.9300	2,429,823.0860
(605) IRF			558,295.0010	2,429,929.8600
PLUG FOUND E 1/4 CORNER SECT. 12			560,742.6830	2,429,858.0970

POINT*/DESCRIPTION	STATION	OFFSET	NORTH	EAST
(606) IRF	801+34.44	61.83' RT	558,120.4210	2,429,928.8850
(607) IRF	800+52.87	78.46' RT	558,038.8790	2,429,945.6800
IRF	801+47.97	220.78' LT	558,133.3760	2,429,646.2500
IRF	800+81.98	219.76' LT	558,067.4440	2,429,647.3490
IRF	801+49.84	100.31' LT	558,135.4850	2,429,766.7120
IRF - EX. R.O.W.	793+14.17	65.43' RT	557,300.1590	2,429,934.1390
IRF - EX. R.O.W.	797+24.33	78.69' RT	557,710.3373	2,429,946.5719
IRF - EX. R.O.W.	792+32.26	50.03' RT	557,218.2175	2,429,918.8768
IRF - EX. R.O.W.	788+82.52	50.03' RT	556,868.8750	2,429,919.6185
IRF - EX. R.O.W.	787+89.12	42.61' LT	556,774.8878	2,429,827.1679
IRF - EX. R.O.W.	787+89.11	99.96' LT	556,774.7660	2,429,769.8180
IRF	793+29.97	102.79' LT	557,315.6160	2,429,765.8940
IRS - PROPOSED R.O.W.	791+50.00	78.74' RT	557,136.0086	2,429,947.7914
IRF - SE CORNER N 1/2 - NW 1/4 SECTION 18			556,895.5850	2,432,659.7920
IRS - SW CORNER N 1/2 - NW 1/4 SECTION 18	788+82.53	0.98' LT	556,868.3786	2,429,868.6103



WTG NO.: 18-2008RH-685.0  
K SEVEN, LLC, A MISSOURI LLC.  
(DOC. NO. 2008R05143)  
TAX NO: 01-035-002-50 & 01-035-001-00

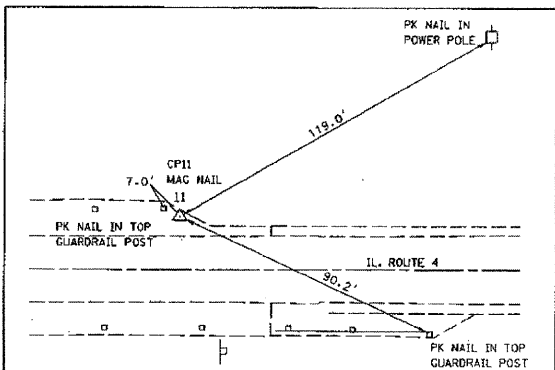
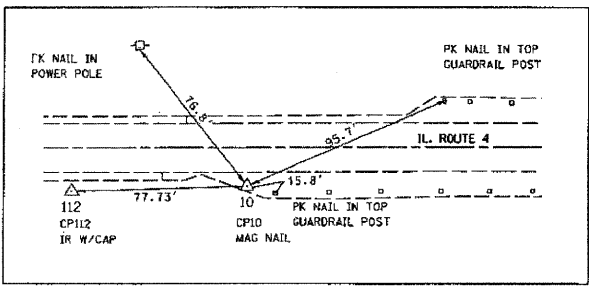
S 1/2, NW 1/4  
SECTION 18, T4S, R5W

WTG NO.: 18-2008RH-686.0  
K SEVEN, LLC, A MISSOURI LLC.  
(DOC. NO. 2008R05142)  
TAX NO: 01-034-015-00

N 1/2, NW 1/4  
SECTION 18, T4S, R5W

WTG NO.: 18-2008RH-687.0  
MIDWEST COAL RESERVES OF ILLINOIS, LLC.  
A DELAWARE LLC.  
(BK 814 PG 735)  
TAX NO: 19-163-001-00(P)

NOTE: C OF PAVEMENT AND CONSTRUCTION IS NOT EQUAL TO C OF R.O.W.



\* SEE TOTAL HOLDING AREA SOURCE TABLE ON SHEET 2

PARCEL NO.	OWNER	TOTAL HOLDING ACRES	FEE SIMPLE ACQUISITION		REMAINDER ACRES	EASEMENTS		PERMANENT TAX NUMBER	PROPERTY ACQUIRED BY
			ACRES	SQ. FT.		PE = PERMANENT ACRES	TE = TEMPORARY SQ. FT.		
8905021	K SEVEN, LLC, A MISSOURI LIMITED LIABILITY COMPANY. TITLE REPORT NO. 18-2008RH-686.0	203.7349	0.2445	10,652	203.4904	N/A	N/A	01-034-015-00 (MAP NO. 04-18-100-007)	

STATE OF ILLINOIS )  
                                  ) SS  
COUNTY OF WASHINGTON )

I, GARY S. MUELLER, AN ILLINOIS PROFESSIONAL LAND SURVEYOR, CERTIFY THAT I HAVE SURVEYED THE PLAT OF HIGHWAY SHOWN HEREON AND THAT THIS PROFESSIONAL SERVICE CONFORMS TO THE CURRENT ILLINOIS MINIMUM STANDARDS FOR A BOUNDARY SURVEY FOR THE PROPOSED PARCEL(S) TO BE ACQUIRED BY THE STATE OF ILLINOIS, DEPARTMENT OF TRANSPORTATION, SHOWN HEREON.

DATED 7/30/2009  
*Gary S. Mueller*  
GARY S. MUELLER, PLS NO. 3332  
LICENSE EXPIRATION DATE: 11/30/2010



**ASSOCIATED PROFESSIONALS, INC.**  
17625 Mockingbird Road, P.O. Box 311  
Nashville, Illinois 62263  
Ph. 618-478-9000 Fax 618-478-9001  
e-mail: api@apisurvey.com  
IDPR Design Firm License No. 184-001303

ILLINOIS DEPARTMENT OF TRANSPORTATION  
**PLAT OF HIGHWAYS**  
FAP ROUTE 682 (IL ROUTE 4)  
SECTION 21BR  
RANDOLPH COUNTY  
JOB NO. R-98-005-09  
STATION 787+00 TO STATION 803+00

SCALE: 1" = 60'				SHEET 3 OF 4
ILLINOIS DEPARTMENT OF TRANSPORTATION DIVISION OF HIGHWAYS/REGION 5/DISTRICT B 1102 EASTPORT PLAZA DRIVE COLLINSVILLE, ILLINOIS 62234-6198				
F.A.P. RTE.	SECTION	COUNTY	TOTAL SHEETS	SHEET NO.
682	21BR, 21-1-1	RANDOLPH	77	34
COMPLETION DATE OF FIELD WORK PERFORMED				CONTRACT NO. 76126
LAND SURVEY: 2/24/2009		ROW STAKING: 6/26/2009		FED. ROAD DIST. NO. 8 ILLINOIS FED. AID PROJECT