

STATE OF ILLINOIS
 DEPARTMENT OF TRANSPORTATION
 DIVISION OF HIGHWAYS

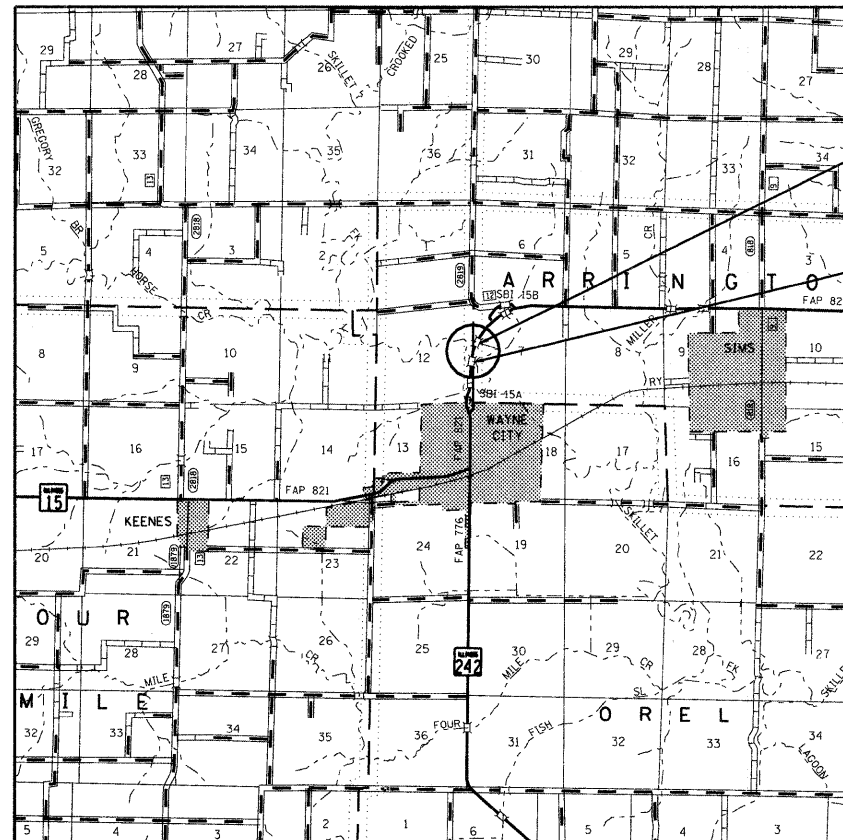
**PROPOSED
 HIGHWAY PLANS**

FAP ROUTE 821 (IL 15)
 SECTION D7 SCOUR REPAIR 2011-1
 PROJECT --
 SCOUR MITIGATION
 WAYNE COUNTY

C-97-124-10

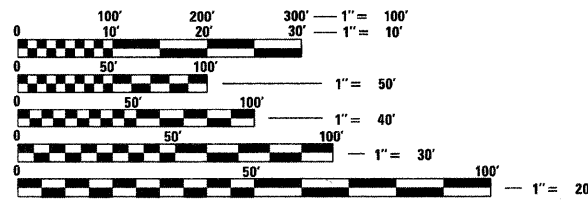
F.A.P. RTE.	SECTION	COUNTY	TOTAL SHEETS	SHEET NO.
821	D7 Scour Repair 2011-1	Wayne	5	1
ILLINOIS			CONTRACT NO. 74478	

FOR INDEX OF SHEETS, SEE SHEET NO. 2



STR #096-0004
 SKILLET FORK
 OVERFLOW

STR #096-0003
 SKILLET FORK



FULL SIZE PLANS HAVE BEEN PREPARED USING STANDARD ENGINEERING SCALES. REDUCED SIZED PLANS WILL NOT CONFORM TO STANDARD SCALES. IN MAKING MEASUREMENTS ON REDUCED PLANS, THE ABOVE SCALES MAY BE USED.

J.U.L.I.E.
 JOINT UTILITY LOCATION INFORMATION FOR EXCAVATION
 1-800-892-0123
 OR 811

PROJECT ENGINEER: ALEC RING
 PROJECT MANAGER

CONTRACT NO. 74478

STATE OF ILLINOIS
 DEPARTMENT OF TRANSPORTATION
 DIVISION OF HIGHWAYS

SUBMITTED March 25 2010
Roger S. Onshell
 DEPUTY DIRECTOR OF HIGHWAYS, REGION ENGINEER

May 7 2010
Scott E. Stitt
 Acting ENGINEER OF DESIGN AND ENVIRONMENT

May 7 2010
Christine M. Reed
 DIRECTOR OF HIGHWAYS, CHIEF ENGINEER

PRINTED BY THE AUTHORITY
 OF THE STATE OF ILLINOIS

GENERAL NOTES

THIS SECTION SHALL BE CONSTRUCTED IN ACCORDANCE WITH THE PLANS; THE STANDARD SPECIFICATIONS FOR ROAD AND BRIDGE CONSTRUCTION, ADOPTED JANUARY 1, 2007; THE SUPPLEMENTAL SPECIFICATIONS AND RECURRING SPECIAL PROVISIONS INDICATED ON THE CHECKSHEET; AND THE SPECIAL PROVISIONS INCLUDED IN THE PROPOSAL.

THIS PROJECT IS LOCATED ON IL 15 OVER SKILLET FORK AND SKILLET FORK OVERFLOW IN WAYNE COUNTY AT STRUCTURE NUMBERS 096-0003 AND 096-0004 RESPECTIVELY.

THE WORK INCLUDED IN THIS PROJECT CONSISTS OF SCOUR MITIGATION, CHANNEL EXCAVATION AND ALL OTHER WORK NECESSARY TO COMPLETE THIS SECTION.

BEDDING MATERIAL SHALL BE CLASS A2. ALL BEDDING MATERIAL SHALL BE INCLUDED IN THE PRICE OF STONE DUMPED RIPRAP, CLASS A6.

PLAN DIMENSIONS AND DETAILS RELATIVE TO THE EXISTING STRUCTURE HAVE BEEN TAKEN FROM EXISTING PLANS AND ARE SUBJECT TO NOMINAL CONSTRUCTION VARIATIONS. IT SHALL BE THE CONTRACTOR RESPONSIBILITY TO VERIFY SUCH DIMENSIONS AND DETAILS IN THE FIELD AND MAKE NECESSARY APPROVED ADJUSTMENTS PRIOR TO THE CONSTRUCTION OR ORDERING OF MATERIAL, SUCH VARIATIONS SHALL NOT BE CAUSE FOR ADDITIONAL COMPENSATION OR A CHANGE IN THE SCOPE OF WORK. THE CONTRACTOR WILL BE PAID FOR THE QUANTITY ACTUALLY FURNISHED AT THE UNIT PRICE BID FOR THE WORK.

THE CONTRACTOR SHALL BE RESPONSIBLE FOR PROTECTING UTILITY PROPERTY FROM CONSTRUCTION OPERATION AS OUTLINED IN ARTICLE 107.31 OF THE STANDARD SPECIFICATIONS. THE J.U.L.I.E. NUMBER IS 800-892-0123. A MINIMUM OF 96 HOURS ADVANCE NOTICE IS REQUESTED.

INDEX OF SHEETS

- 1 COVER SHEET
- 2 INDEX OF SHEETS, HIGHWAY STANDARDS AND GENERAL NOTES
- 3 SUMMARY OF QUANTITIES
- 4-5 SCOUR MITIGATION PLAN SHEETS

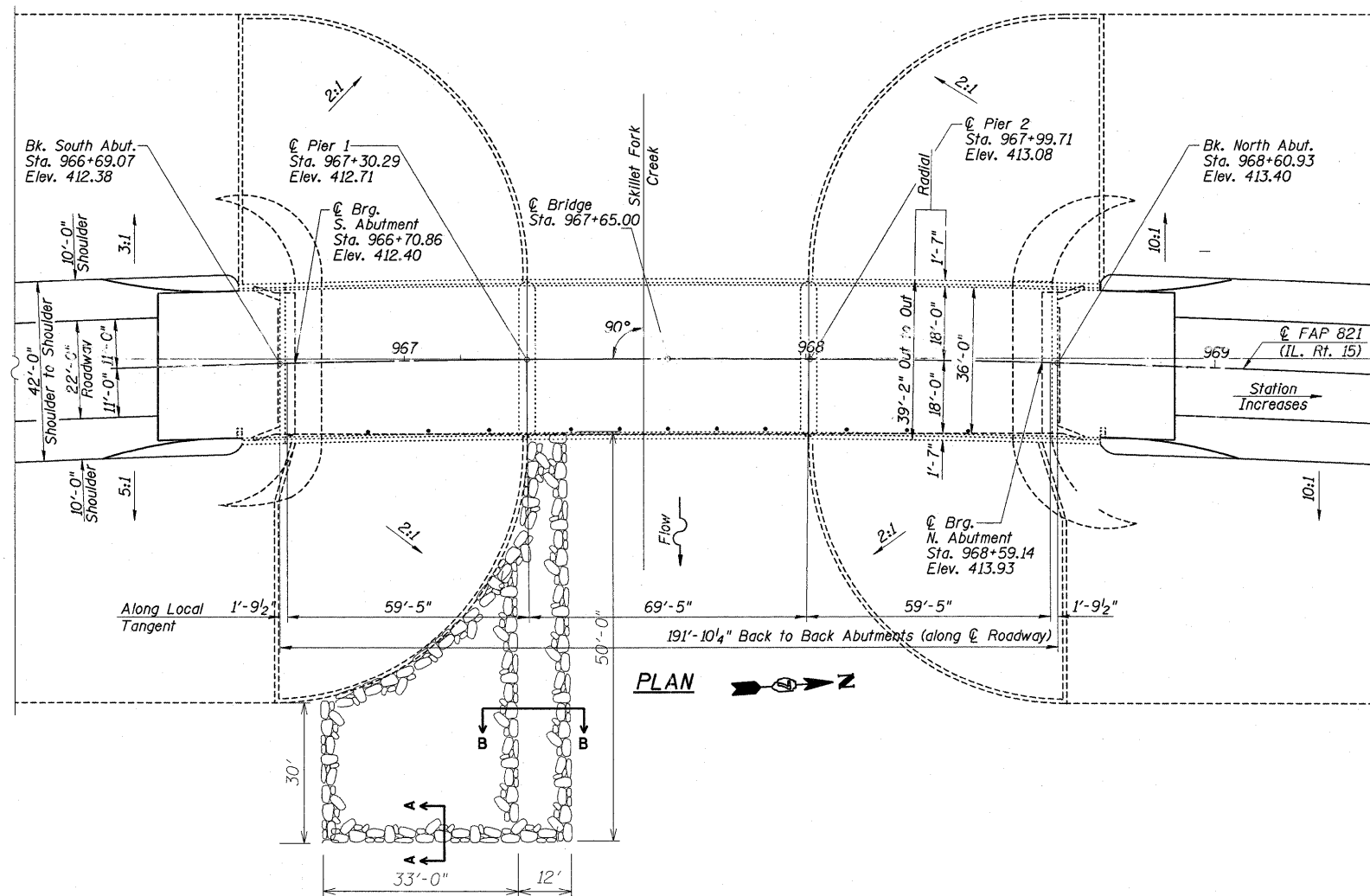
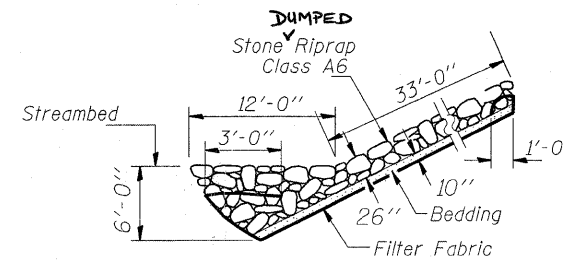
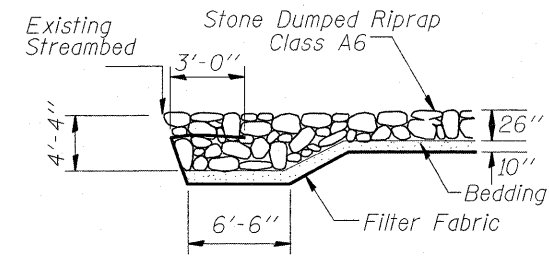
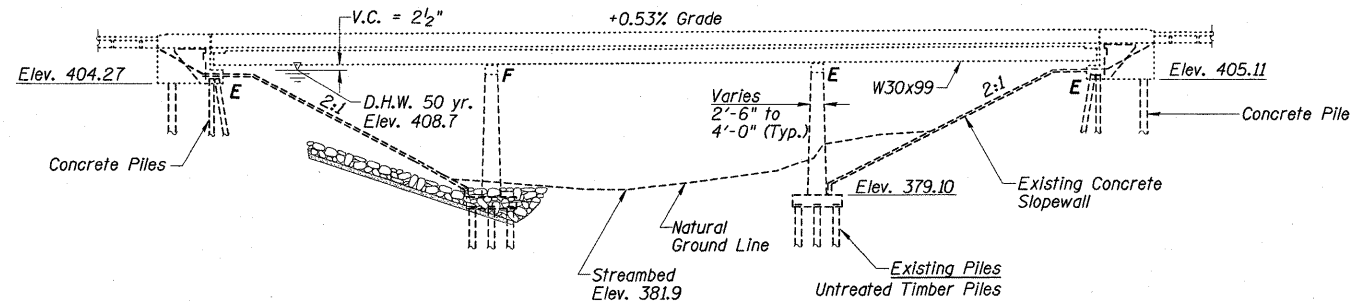
LIST OF HIGHWAY STANDARDS

- 000001-05 STANDARD SYMBOLS, ABBREVIATIONS AND PATTERNS
- 001006 DECIMAL OF AN INCH AND OF A FOOT
- 701001-02 OFF-ROAD OPERATIONS, 2L, 2W, MORE THAN 15' AWAY
- 701006-03 OFF-ROAD OPERATIONS, 2L, 2W, 15' to 24" FROM EDGE OF PAVEMENT
- 701011-02 OFF-ROAD MOVING OPERATIONS, 2L, 2W, DAY ONLY
- 701101-02 OFF-ROAD OPERATIONS, MULTI-LANE, 15' to 24" FROM EDGE OF PAVEMENT
- 701106-02 OFF-ROAD OPERATIONS, MULTI-LANE, MORE THAN 15' AWAY
- 701901-01 TRAFFIC CONTROL DEVICES

FILE NAME =	USER NAME = #USER#	DESIGNED - ADR	REVISED -	STATE OF ILLINOIS DEPARTMENT OF TRANSPORTATION	INDEX OF SHEETS AND GENERAL NOTES	F.A.P. RTE.	SECTION	COUNTY	TOTAL SHEETS	SHEET NO.
#FILE#		DRAWN - ADR	REVISED -			821	D7 SCOUR REPAIRS 2011-1	WAYNE	5	2
		CHECKED -	REVISED -			CONTRACT NO. 74478			ILLINOIS FED. AID PROJECT	
	PLOT SCALE = #SCALE#	DATE - 3/18/10	REVISED -	SCALE:	SHEET NO. OF SHEETS	STA. TO STA.				

SUMMARY OF QUANTITIES			100% STATE	CONSTRUCTION TYPE CODE	
CODE NO	ITEM	UNIT	TOTAL QUANTITIES	SFTY-2A	
20300100	CHANNEL EXCAVATION	CU YD	720	720	
28100811	STONE DUMPED RIPRAP, CLASS A6	TON	1590	1590	
28200200	FILTER FABRIC	SQ YD	1390	1390	
67100100	MOBILIZATION	L SUM	1	1	

BM: Brass Monument Gaging Station @ S.E. Corner of hubguard Elev. 412.54

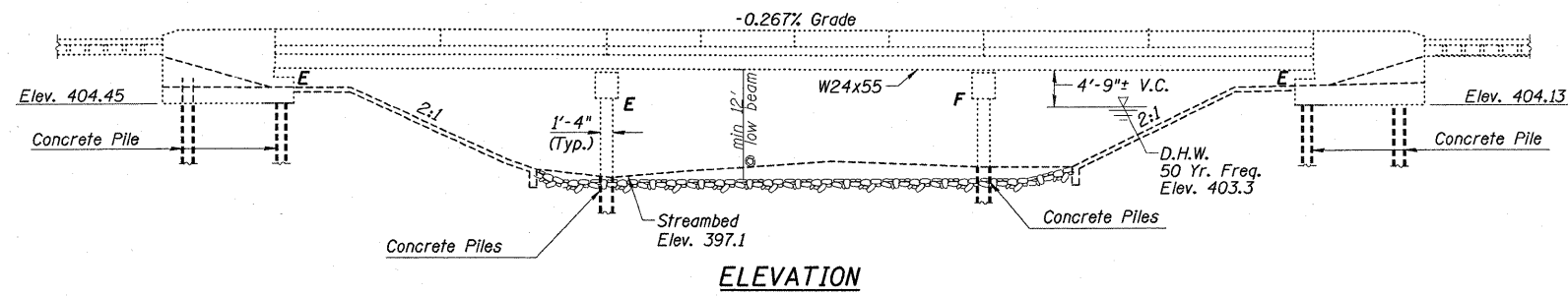


GENERAL NOTES

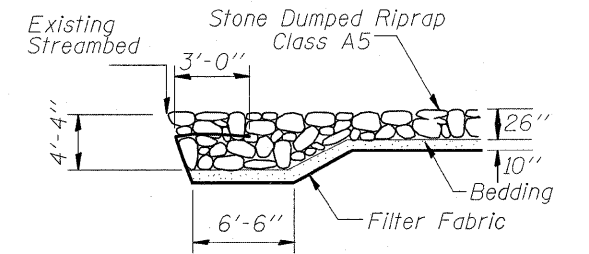
Plan dimensions and details relative to existing plans are subject to routine variations. The Contractor shall field verify existing dimensions and details affecting new construction and make necessary adjustments prior to construction or ordering of materials. Such variations shall not be cause for additional compensations for a change in scope of the work; however, the Contractor will be paid for the quantity actually furnished based upon the unit price bid for the work.
 Layout of the slope protection system may be varied to suit ground conditions in the field as directed by the Engineer

BILL OF MATERIALS

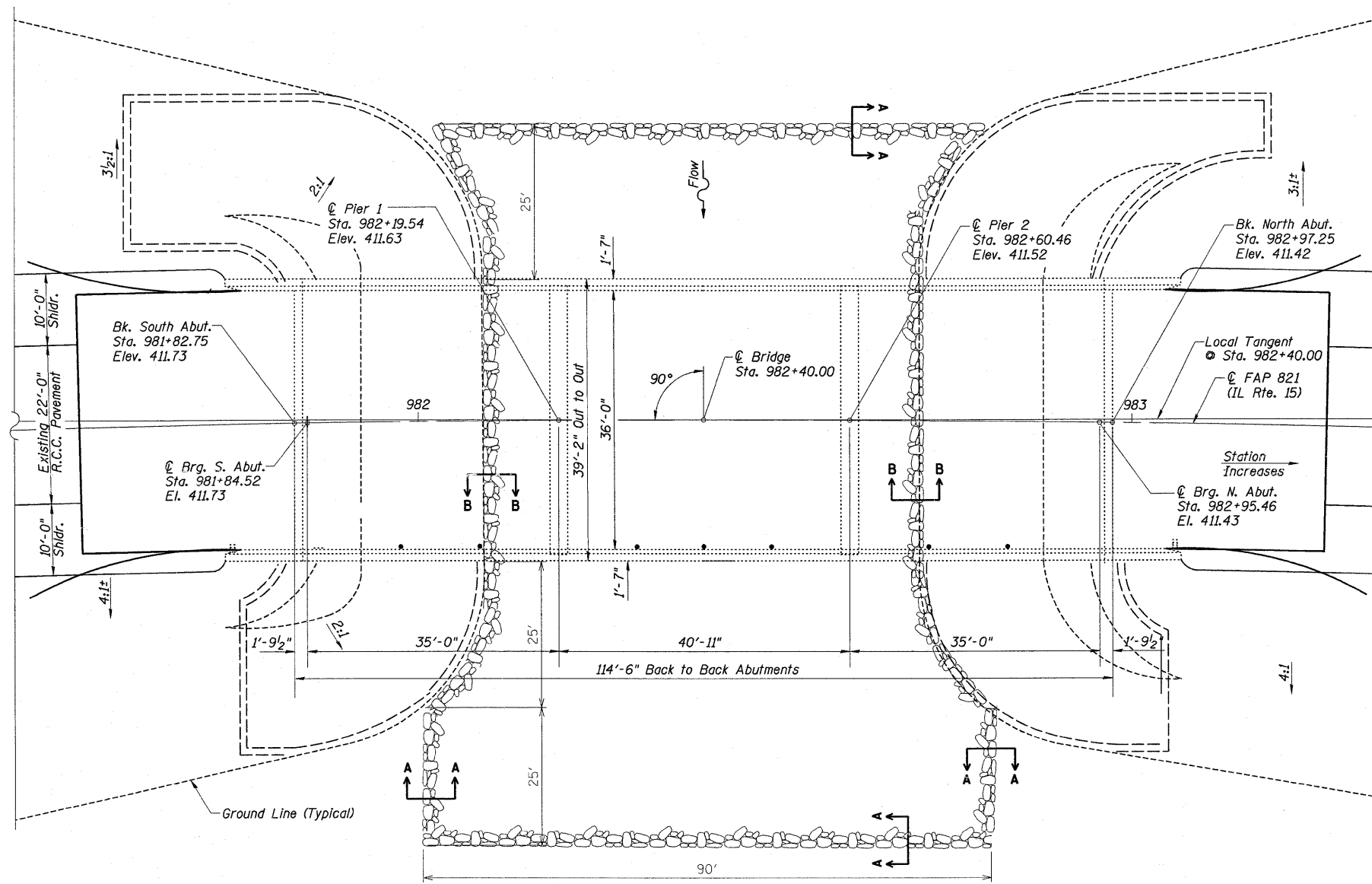
ITEM DESCRIPTION	UNIT	QUANTITY
Channel Excavation	CU YD	200
Stone Dumped Riprap, Class A6	TONS	350
Filter Fabric	SQ YD	260



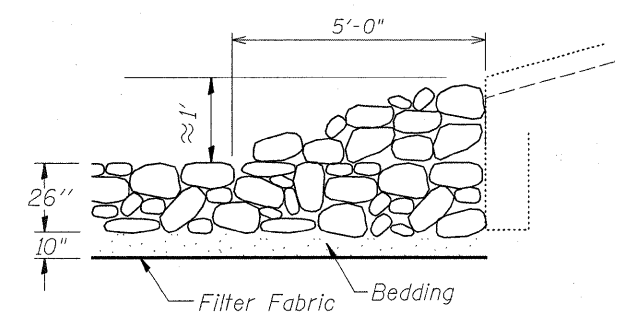
ELEVATION



SECTION A-A



PLAN



SECTION B-B

GENERAL NOTES

Plan dimensions and details relative to existing plans are subject to routine variations. The Contractor shall field verify existing dimensions and details affecting new construction and make necessary approved adjustments prior to construction or ordering of materials. Such variations shall not be cause for additional compensations for a change in scope of the work; however, the Contractor will be paid for the quantity actually furnished based upon the unit price bid for the work. Layout of the slope protection system may be varied to suit ground conditions in the field as directed by the Engineer

BILL OF MATERIALS

ITEM DESCRIPTION	UNIT	QUANTITY
Channel Excavation	CU YD	520
Stone Dumped Riprap, Class A6	TONS	1240
Filter Fabric	SQ YD	1130

FILE NAME =	USER NAME = steffennk	DESIGNED - ADR	REVISED -
SCOUR REPAIRS 2011-1.sht.dgn		DRAWN - ADR	REVISED -
PLOT SCALE = 20.0000' / IN.		CHECKED -	REVISED -
PLOT DATE = 3/25/2010		DATE = 3/1/10	REVISED -

**STATE OF ILLINOIS
DEPARTMENT OF TRANSPORTATION**

PLAN AND ELEVATION VIEW 096-0004				
SCALE:	SHEET NO.	OF SHEETS	STA.	TO STA.

F.A.P. RTE.	SECTION	COUNTY	TOTAL SHEETS	SHEET NO.
821	07 SCOUR REPAIRS 2011-1	WAYNE	5	5
CONTRACT NO. 74478				
ILLINOIS FED. AID PROJECT				