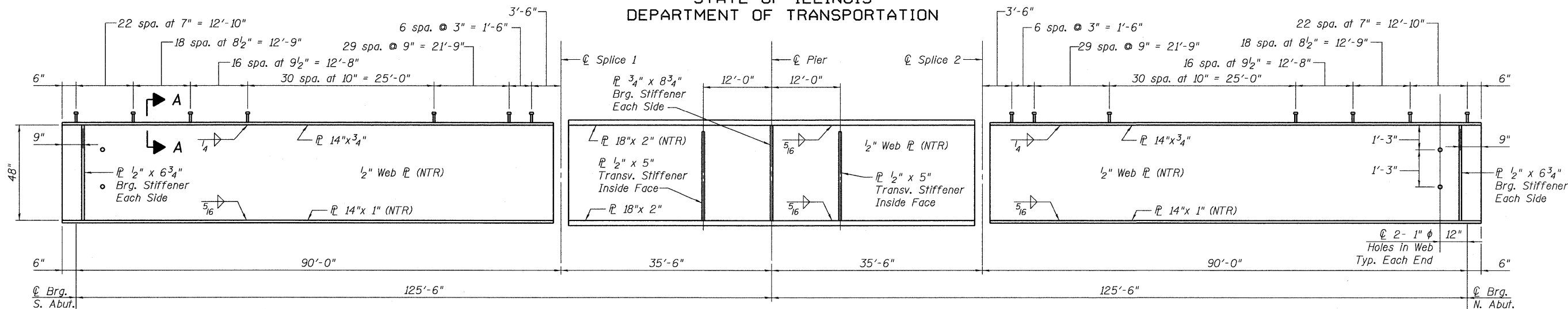
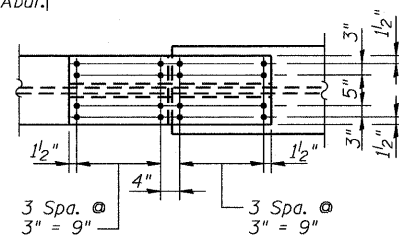


STATE OF ILLINOIS
DEPARTMENT OF TRANSPORTATION

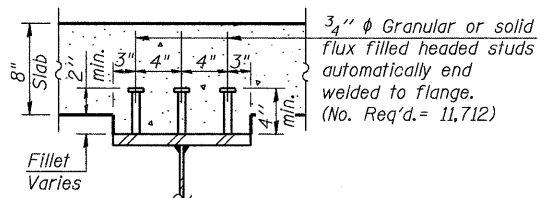


GIRDER ELEVATION

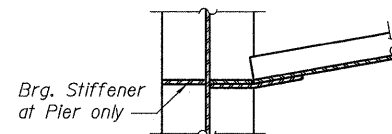
(All flange, web and bearing stiffener plates shall be AASHTO M270 Grade 50)



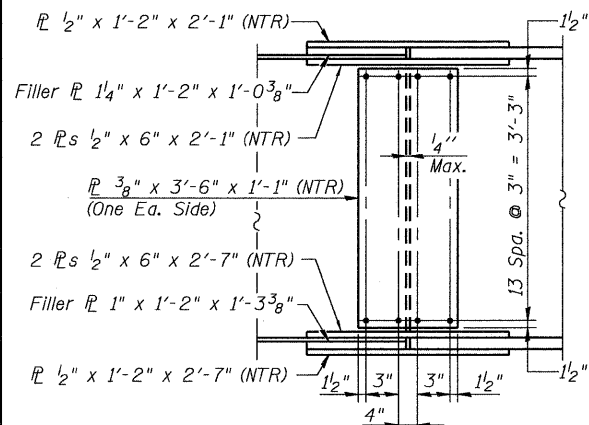
TOP FLANGE



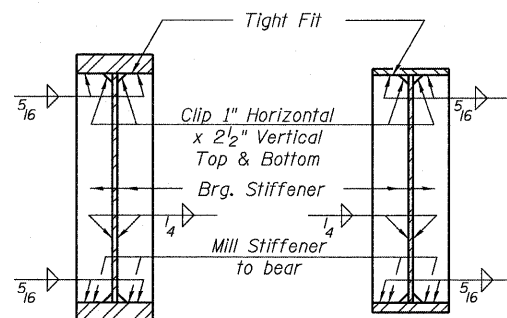
SECTION A-A



SECTION B-B



WEB

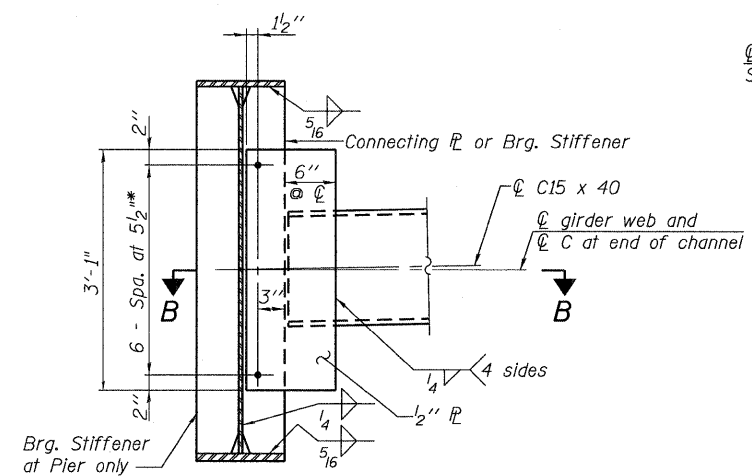


SECTION AT PIER

SECTION AT ABUTMENT

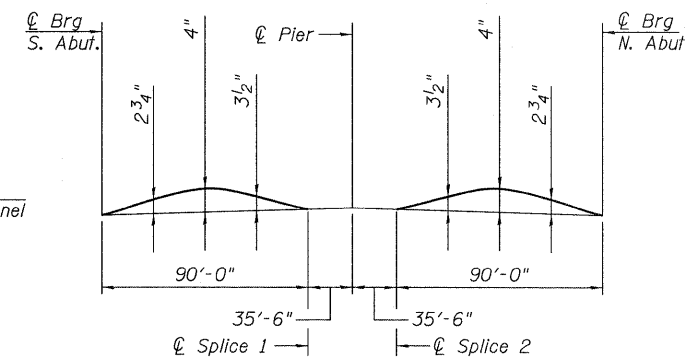


TRANSVERSE STIFFENER

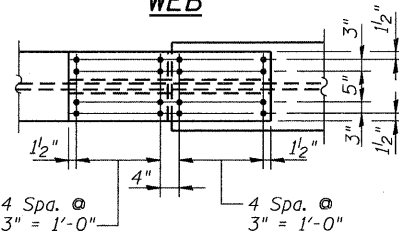


INTERIOR DIAPHRAGM

Note:
Two hardened washers required for each set of oversized holes. Provide 3/8" hardened structural plate washers for slotted holes. *3/4" φ HS bolts, 5/16" φ holes except at the west side of Girder 5 & the east side of Girder 12 for Stage Construction. At these locations use 1 1/2" x 1 7/8" V long slotted holes in the diaphragm connection plate and the girder connecting plate. Bolts in slotted holes shall be finger tight until the second stage pour is complete. Position slots so bolts start at one end with no concrete load and finish near opposite end under deck load.



CAMBER



**BOTTOM FLANGE
FIELD SPLICE DETAIL**

**TOP OF WEB ELEVATIONS
(For Fabrication Only)**

GIRDER	℄ Brg. S. Abut.	℄ Splice 1	℄ Pier	℄ Splice 2	℄ Brg. N. Abut.
1	669.181	669.750	669.734	669.718	669.071
2	669.336	669.903	669.887	669.870	669.221
3	669.491	670.056	670.039	670.022	669.371
4	669.647	670.210	670.192	670.174	669.521
5	669.779	670.340	670.321	670.303	669.648
6	669.901	670.460	670.440	670.421	669.764
7	670.022	670.580	670.559	670.539	669.880
8	670.144	670.699	670.678	670.658	669.996
9	670.147	670.700	670.678	670.657	669.993
10	670.030	670.581	670.559	670.537	669.871
11	669.914	670.463	670.440	670.416	669.749
12	669.797	670.344	670.320	670.296	669.627
13	669.670	670.215	670.191	670.166	669.495
14	669.520	670.063	670.038	670.012	669.339
15	669.370	669.911	669.885	669.858	669.184
16	669.219	669.759	669.732	669.705	669.028

DESIGNED	DJH
CHECKED	ALN/MJJ
DRAWN	DJH
CHECKED	ALN

THOUVENOT, WADE & MOERCHEN, INC.
CORPORATE OFFICE
4940 Old Collinsville Road
Swansea, Illinois 62226
Tel: 618.624.4488
Fax: 618.624.6688
SWANSEA • WATERLOO • EDWARDSVILLE • CARBONDALE • ST. CHARLES



SHEET NO. 23
36 SHEETS

F.A.P. RTE.	SECTION	COUNTY	TOTAL SHEETS	SHEET NO.
322	(58-64HB-1)B-1	MACON	149	82
CONTRACT NO. 74387				
FED. ROAD DIST. NO. 7 ILLINOIS FED. AID PROJECT				

**STRUCTURAL STEEL
DETAILS
SN 058-0136**

Notes:
Use 7/8" φ H.S. bolts with 5/16" φ holes for all splice connections. All splice plates shall be AASHTO M 270 Grade 50. Load carrying components designated "NTR" shall conform to the Supplemental Requirements for Notch Toughness, Zone 2.